



# NEBCA News

*The Official Publication of the North East Border Collie Association, Inc.*



Bud and Mary Ames' sheep cross the stream at the Spring Valley Sheepdog Trial hosted by Steve Wetmore in Strafford, Vermont, on July 22-23, 2017

*The mission of the North East Border Collie Association is to promote and to protect the Border Collie as a working stock dog through the sanctioning and regulation of competitive herding trials and by providing information on training, health and breeding.*

## NEBCA News

### Editors

Sallie Butler, Chief  
978-887-8164  
[kryptomongo@verizon.net](mailto:kryptomongo@verizon.net)

Molly King, Copy Editing

Lori Tsuruda, Layout

### Issue - Publication Date

Spring -- March 1  
Summer -- June 1  
Autumn -- September 1  
Winter -- December 1

### Deadlines

At least one month prior to publication date, send materials to Sallie Butler,  
[kryptomongo@verizon.net](mailto:kryptomongo@verizon.net)

### NEBCA Bylaws & Rules at

<http://www.nebca.net/welcome.html>

If members require hard copies, please contact The Secretary, Martha Walke, PO Box 66, S. Strafford, VT 05070

### NEBCA Membership

Annual Renewals due January 1<sup>st</sup>  
\$25 per individual, or  
\$30 per farm/family

To join or renew, send your name, address and dues to: The Secretary, NEBCA, Martha Walke, PO Box 66, S. Strafford, VT 05070

OR submit online at  
<http://nebca.net/membershipChoice2017.html>

New members may join at any time. After October 1, you will automatically be paid through the following calendar year.

## NEBCA News Display Advertising

Business Card  
\$15 per issue/\$50 per year

Quarter Page  
\$35 per issue/\$100 per year

Half Page  
\$50 per issue/\$150 per year

Full Page  
\$75 per issue/\$225 per year

## Please Support Border Collie Rescue

New England Border Collie Rescue  
<http://nebcr.org>  
[info@nebcr.org](mailto:info@nebcr.org)

Mid Atlantic Border Collie Rescue  
<http://www.mabcr.org>  
[slr@mabcr.org](mailto:slr@mabcr.org)

Glen Highland Farm  
<http://glenhighlandfarm.com/sbcr.htm>  
[rescue@glenhighlandfarm.com](mailto:rescue@glenhighlandfarm.com)

Border Collie Rescue Ontario  
<http://www.bordercollierescueont.com>  
[cindy@bordercollierescueont.com](mailto:cindy@bordercollierescueont.com)  
[Sharon@bordercollierescueont.com](mailto:Sharon@bordercollierescueont.com)

### NEBCA Officers

President Chris Bowen  
603-499-3209  
[christopher.lea.bowen@gmail.com](mailto:christopher.lea.bowen@gmail.com)  
Vice President Dave Young  
819-889-3276 [dyoung@ubishops.ca](mailto:dyoung@ubishops.ca)  
Secretary Martha Walke  
802-765-4935 [walkem@sover.net](mailto:walkem@sover.net)  
Treasurer Denise Leonard 413-773-5232 [dleonard@schoolph.umass.edu](mailto:dleonard@schoolph.umass.edu)

### Board of Directors

Chair Rob Drummond 603-478-0846  
[rob@brailsfordco.com](mailto:rob@brailsfordco.com)  
Maria Mick 518-861-5854  
[mickwa@capital.net](mailto:mickwa@capital.net)  
Annie Palmer 570-582-9200  
[bootleggerfarm@epix.net](mailto:bootleggerfarm@epix.net)  
Fiona Robertson 819-842-4227  
[creeksidefarm@sympatico.ca](mailto:creeksidefarm@sympatico.ca)

### Open Trials Committee

Chair Sue Schoen 508-548-5347  
[sbschoen@comcast.net](mailto:sbschoen@comcast.net)  
Stephen Wetmore  
802-765-4466 [swwet@valley.net](mailto:swwet@valley.net)  
Sally Molloy 609-279-9728  
[molloy.sally@gmail.com](mailto:molloy.sally@gmail.com)  
Sallie Butler 978-887-8164  
[kryptomongo@verizon.net](mailto:kryptomongo@verizon.net)  
Barbara Levinson  
[sblevinsonnj@gmail.com](mailto:sblevinsonnj@gmail.com)

### Novice Trials Committee

Chair Barbara Armata  
518-875-6471 [taffaway@aol.com](mailto:taffaway@aol.com)  
Wendy Warner 413-743-4733  
[farmgirl.4@hotmail.com](mailto:farmgirl.4@hotmail.com)  
Sara Reiter 607-655-2170  
[sarareit@gmail.com](mailto:sarareit@gmail.com)  
Barbara Eriksson 978-895-9773  
[beriksson525@gmail.com](mailto:beriksson525@gmail.com)

### Learning Trials Committee

Chair Barbara Armata  
518-875-6471 [taffaway@aol.com](mailto:taffaway@aol.com)  
Rose Redick  
518-465-68908 [roser@aol.com](mailto:roser@aol.com)  
Liz Shaw 860-887-7197  
[ejshaw@magicalmutt.com](mailto:ejshaw@magicalmutt.com)  
Emily Yazwinski  
413-774-3386 [yazfam@verizon.net](mailto:yazfam@verizon.net)

Calendar George Northrop 978-249-4407 [george01368@yahoo.com](mailto:george01368@yahoo.com)

Library Martha Walke  
802-7645-4935 [walkem@sover.net](mailto:walkem@sover.net)

Newsletter Sallie Butler 978-887-8164 [kryptomongo@verizon.net](mailto:kryptomongo@verizon.net)

Points Keeper Pam Davies 908-361-1335 [pamdavies30@gmail.com](mailto:pamdavies30@gmail.com)

Website Joanne & Jim Murphy  
613-456-6196 [jomur9@hotmail.com](mailto:jomur9@hotmail.com)



## From the President - Chris Bowen



It is early August as this issue prepares to go to print and all three of the big trials that so many of us work so hard to qualify for are only weeks away. By the time this hits the news stands, some of them have already happened! First is the Fall Foliage, the

NEBCA Open championship, in Cooperstown, NY, August 26 to 28, judged by Joyce Geier. Many thanks to the Leatherstocking Trials Committee for allowing us to combine this event with their trial this year in order to avoid conflicting with the National Finals. Next up is the NEBCA Novice Finals at Bernie and Barb Armata's Taravale Farm in Esperance, NY, on September 2 & 3 with Barbara Levinson judging. It has been a few years since I have had a dog that is eligible to compete in this one. I am excited about having the opportunity to give it a go with my youngster, Chance, this time. Finally, the USBCHA National Finals are on the East Coast this year, in Belle Grove, VA, September 26 through October 1. Qualifying for that has been a focus of many of the best NEBCA handlers for the last year. Best of luck to all who will be competing there!

On the biggest stage of all, NEBCA members Beverly Lambert and Amanda Milliken, representing the USA and Canada respectively, competed in the World Trial in the Netherlands in July. Both these stars of the herding game performed admirably while many of us at home had fun participating vicariously by monitoring their performances via social media. Congratulations to both.

This is the first issue of the Newsletter from our new editor, Sallie Butler. She is getting support in her endeavors from Lori Tsuruda and Molly King. Many thanks to them. With their efforts, I have no doubt that this newsletter will continue to be one of the great benefits of membership in NEBCA.

## TABLE OF CONTENTS

From the President .....	3
From Your Editors .....	3
Trial Reports	
Bobtail .....	15
Caora .....	16
Cascade .....	17
Dancing Ewe .....	12-13
Fetch Gate Novice .....	18
New Hampshire Farm Museum	18
Tanstaaf Novice .....	15
Taravale Novice .....	14
The Faulty Dog .....	4-5
Minutes of May '17 NEBCA	
Membership Meeting .....	6-10
Report on Mark Elliott Clinic .....	11
Breeders Directory .....	19
Classified Ads .....	20

## From Your Editors

Our first issue of the Newsletter as editors owes major thanks to our colleagues for articles, photos, and artwork. We are grateful to Maria Amodei for having served most ably as Newsletter Editor, and note that it took three of us to fulfill Maria's duties.

Please continue to send your comments, ideas, articles, photos, drawings, and questions – They are always welcome.

At least one month prior to the publication date, send items to Sallie, [KryptoMongo@verizon.net](mailto:KryptoMongo@verizon.net)

## Upcoming Topics

*More Summer Trial Reports*

*Border Collie Eye, Part 2:  
Training the Looser-Eyed Stockdog*

*Border Collie Eye, Part 3:  
Training the Stronger-Eyed Stockdog*

*Positivity*

*How to Retire a Trial Run, and Win in Training*

*Your Photos, Drawings, and Cartoons*

## The Faulty Dog – Training the Gaps

### Border Collie Eye, Part 1

By Sallie Butler with Research by Molly King

We continue the *Newsletter's* series on training working sheepdogs. No dog is perfect, and a trainer bears the responsibility of shaping a dog's natural talents for stockwork to a higher degree. In other words, the shepherd's dog will require training to fill gaps in a dog's genetic inheritance.

As a relative newcomer to sheepdog training and handling, I've puzzled over a term applied to stockdog work – border collie eye.

The stare is evident as a talented collie moves sheep. The degree of stare varies from one dog to another.

What is eye?

Is it inheritable?

How much is useful?

Can training sharpen its utility?

The topic of eye will be covered in three installments. First, descriptions of stockdog eye are collected below in order to infer common meaning – from books, as noted, and unattributed material offered by experienced trainers from North America, U.K. and Ireland. Future articles will describe how trainers work to improve actions related to eye in the sheepdog. As you read, please remember that opinions differ:

"Sticky eyed dog...seems to lock on to sheep with a glare...Loose eyed dog...refers to a dog that has looser contact on his sheep." p. 36, *The Natural Way*, by Julie [Simpson] Hill, Bishop Wilton, 2003

"[Sticky eyed] pup is less likely to move around freely because his great amount of 'eye' holds him back... 'Loose-eyed' ...describe[s the] youngster who likes to run in and scatter his sheep..." *A Way of Life*, H. Glyn Jones talks to Barbara C. Collins, Diamond Farm Book Publications, 1987



Stephen Bilson

Eight-week-old sheepdog displays genetic inheritance related to eye...

"To revert to the question of 'eye,' this is a subject which is often misunderstood. First of all 'strong eye' is not essential in the working dog and I have known many excellent 'loose-eyed' dogs. It can be, and often is, a liability rather than an asset..." p. 19, *The Farmer's Dog*, by John Holmes, Popular Dogs Publishing Co. Ltd., 1960

"[Question:] What do you consider the easiest type of dog to train? [Reply, from Bobby Henderson, Scotland] One with quite a bit of eye but not too much eye, easy-going." p. 84, *Top Trainers Talk about Starting a Sheepdog*, ed. Sally Molloy and Heather L. Nadleman, Outrun Press, 2008

Eye derives from predation, modified by selective breeding.

Enough-eye is best.

Medium eye, and largely irrelevant.

Free eye is best. I train toward eye that doesn't hinder good work.

Eye means concentration, although the wide variety of causes of concentration I've not specified [here].

Eye is method.

I don't think about eye. I watch how the dog works, and train to help the dog [to] improve.

"A plain dog, or one with little eye, will generally pose few problems in casting. However, some 'hard-eyed' and 'strong-eyed' dogs (I maintain there is a difference) can cause problems." p. 180, *The Kelpie*, by Tony Parsons, Viking, 2010

"A dog...must not be over-eyed. When working a mob it should show virtually no eye at all, but when shown two or three sheep it should have enough to hold and control them." *Ibid*, p. 221

"...[Some] breeders concentrated too much on the wrong sort of 'eye' and spoilt some useful families." *Ibid*, p. 272

"The Border Collie[s] ...have excellent herding ability, and a steady style when they have sufficient eye." p. 7, *Training and Working Dogs for Quiet Confident Control of Stock*, by Scott Lithgow, University of Queensland Press, 1987

"'Eye' is really a particular style of concentration." *Ibid*, p. 88

"A dog is said to have good eye if he steadies his approach when he gets near the cattle and, lowering his head just a little, watches every movement intently, so that he can judge the correct position to be in, to keep the mob together." *Ibid*, p. 88



Stephen Bilson

...as she walks to sheep. What is the pup thinking?

"Marke Vette, in New Zealand has coined the term *statiphilic* to describe dogs who love ('philic') to make the stock stop moving ('stato')...the emphasis on stalking and 'eye'..." *Ibid*, p. 209

"There have been many ridiculous definitions of 'eye' over the years, the common one being that it is the power of a dog to control (or move) sheep simply by looking at them. In fact, eye is simply the outward manifestation of concentration and caution." p. 33, *Working Sheep Dogs*, by Tully Williams, Landlinks Press, 2007

"The amount and type of eye a dog uses is vital in its effectiveness as a working dog." *Ibid*, p. 33

I think there is a wide spectrum of loose eyed to strong eyed. Loose eye means (to me) a dog that controls sheep with body movements, less intensity. As one moves through the spectrum, less large-body movement, more subtle movements, come into play. The border collie "stare" becomes more apparent. The middle is a dog that uses enough eye for control with slight shifts of head and shoulders.

At the opposite end is a "strong" eyed dog. This dog becomes very mesmerized with staring. They hold the sheep and are content to keep this control and no movement.

Eye may be confused with style, but I don't necessarily agree that more eye is more stylish. I've seen dogs with a "get down and dirty" style not be sticky with eye.

That said, most loose eyed dogs are more upright. So an influence there.

*Summary, for now* – Border-collie eye reflects instincts and thoughts in the dog's brain that yield actions when the dog interacts with livestock. In the young sheepdog, eye seems an outward cue of a suite of inherited traits, an inheritance that might be improved by good training. *Next*: What training might help a loose-eyed sheepdog?

## NEBCA Membership Meeting Minutes

May 27, 2017 Cummington, MA  
Meeting called to order at 4:55PM.  
34 members present.

1. The minutes from the Annual Meeting were approved as written.  
Many thanks to Maria Mick for taking these minutes and writing them up.  
The 'long distance' phone-ins were a success, and we will do this again in 2018.
2. Executive Committee Reports
  - A) Secretary's Report (Martha Walke)  
As of Wed., June 24, there are 239 members; 185 individual, 47 family and 7 lifetime. There are 28 new members and 88 members who have not renewed from 2016. At this time in 2016, there were 222 members; 160 individual, 55 family and 7 lifetime. We appear to be slightly ahead of the game for 2017.  
Motion to accept (DY/PN). Accepted
  - B) Treasurer's Report (Denise Leonard) NEBCA Financials - 1/1/17 to 4/30/17  
[on *NEBCA News* pages 9-10]  
Motion to accept (NP/MK) Accepted
3. Board of Director's report (Maria Mick for Rob Drummond)

### Current Activity:

The BOD has been discussing & working on recognizing long running trials. The idea is to present appropriate awards to show appreciation for all the hard work to putting them on over such a long time. The trials we decided to recognize are:

1) Cummington Sheep & Wool Trial, Cummington, MA  
Kate Collins, George Northrop, and Denise Leonard

2) Kingston Sheep Dog Trial, Kingston, Ontario, Canada  
Amanda Milliken

The idea was to have something that can be put out on display during the trial such as a vase or a trophy of some sort. Primary BOD members involved were Maria Mick and Fiona Robertson.

Etched glass awards were given to Kate and George and Denise. The award for Amanda will be given to her at Kingston this August.

### Pending Discussions/Activity:

The BOD will review Grievance Process in order to clarify some areas and possibly make some minor modifications. In particular; grievances involving USBCHA, role of social media & email, and some minor wording changes. Discussions will continue during the trial season.

The BOD would like input from members on this item. They will be working on it throughout the summer.

Report Submitted By NEBCA Board of Directors (BOD):  
Rob Drummond – Chair  
Maria Mick –Member  
Fiona Robertson – Member  
Annie Palmer - Member



## NEBCA Membership Meeting Minutes *continued*

### 4. Standing Committee Reports

#### A) Open Trials Committee (Sue Schoen)

The 2017 Fall Foliage will be held in conjunction with the Leatherstocking Trial, August 26-28. The judge will be Joyce Geier. Saturday and Sunday, August 26 & 27, will be the USBCHA trial and Fall Foliage qualifier. The top 15 NEBCA qualified dogs will run in the double lift on Monday, August 28. The entry form is under construction. Mary Ann Duffy and Barbara Leverett are providing the sheep.

#### B) Novice Trials Committee (Barbara Armata)

There was a committee discussion after the Annual Meeting and the committee's decisions were posted in the Announcements section of the NEBCA website.

The committee will be discussing the Novice Finals at the Cummington Trial. The Finals will be held the Sat. and Sun. of Labor Day weekend at Taravale Farm in Esperance, NY.

The committee has been discussing raising the fees for NEBCA trials. Our trials are less expensive than others and it is harder to enough sheep and to pay for them. The idea would be that the extra fee would be used specifically for sheep. The committee will continue to work on increasing the fees and finding sheep.

#### C) Learning Trials Committee (Barbara Armata)

They continue to work with trial managers on learning components to their trials.

Rose Redick came up with the idea for the Whistle Challenge for the novice Handlers. It was a success at Cummington and will be tried again at the Taravale Trial.

### 5. Newsletter Report (Chris Bowen for Maria Amodei)

The Summer Newsletter will be a little late. It is Maria's last Newsletter and a new editor will need to be found. Maria has been a stellar editor and she was thanked for all of her work and effort on behalf of the NEBCA Newsletter.

Sallie Butler has volunteered to do the writing for the Newsletter (her computer is too old to do the graphics), and Nancy Joyce Simmons has volunteered to do the layout and graphics. Many thanks to both of them for volunteering for these jobs. The Fall Newsletter will be their first joint effort.

### 6. Select Committee Reports

#### A) Merchandise Committee Report (Joanne Krause)

The committee has shrunk as Betsy Drummond has found she does not have the time to help and has resigned from the committee. Kim Lippolis has stepped in to help.

They have spent about \$2,500 on merchandise and have, so far, brought in through sales at trials about \$1000. They bought a table and some collapsible totes. They will need help (volunteers) at trials with sales. The committee will announce (on the Handlers' Tent) which trials they will be selling merchandise at and will need help with transporting the merchandise as well as with selling.

#### B) Calendar Committee (George Northrop and Kate Collins)

The 2018 calendars are finished and 300 have been printed. Need people to help sell.

#### C) Library Report (Martha Walke)

Circulation is practically non-existent at this point. We have had a generous donation of books and AV from Michael Heasley, a former member. He donated 4 audio books, 1 DVD and 27 books for a total of 32 items. The holdings list on the website will be updated to include all of these items.

**NEBCA Membership Meeting Minutes** *continued*

## 7. New Business

## A) NEBCA at the National Finals

In the past, Betsy Drummond has overseen the sale of NEBCA merchandise at the Finals. If anyone is interested in taking over the sales at the Finals, or even just doing them the final weekend, please get in touch with Chris Bowen. Joanne and Kim will help oversee this.

A question was asked as to whether the National Committee would sell our calendars. Kate will take them, along with brochures, down to the Finals

## B) Replacement for Gene Sheninger

We still need someone replace Gene. Lori Tsuruda has expressed interest in taking over this job.

## C) A discussion followed on the pros and cons of publishing the membership list on the Website.

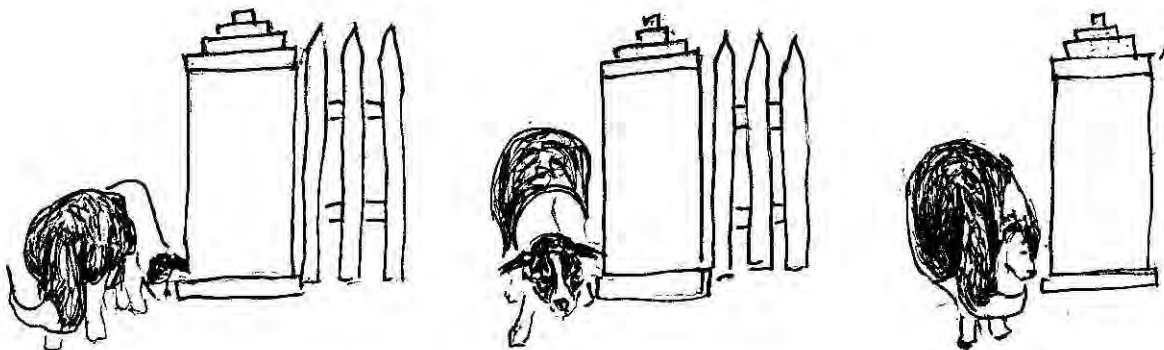
## D) A question was raised about people still getting the print version of the Newsletter when the electronic version is available. Discussion followed.

Motion (JM/GN) to provide both forms of the Newsletter to the membership. The members would request the form they wish to receive the Newsletter. This would verify the desire of the membership. Approved with two (2) abstentions.

## 8. Next NEBCA membership meeting will be August 26, 2017, at the Leatherstocking SDT, Cooperstown, NY.

Motion to adjourn (WM/SW).

Respectfully submitted,  
Martha M. Walke, Secretary



Picking up Pee mail

by Kate Collins

Kate Collins



**Approved NEBCA Financials 1/1/17-4/30/17**

INCOME	1/1/17 to 4/30/17	2017 budget
<b>Advertisements</b>		
Advertisements:Web Ad	\$ 20.00	
Advertisements: Newsletter	\$ 50.00	
TOTAL Advertisements	\$ 70.00	\$ 100.00
<b>Breeders Directory</b>		
Breeders Directory:calender	\$ 40.00	
Breeders Directory:Listing Newsletter	\$ 40.50	
Breeders Directory:Web Link	\$ 86.50	
TOTAL Breeders Directory	\$ 167.00	\$ 450.00
<b>Calendar Sales</b>		
Calendar Sales:Calendars to Members	\$ 429.00	
Calendar Sales:Calendars to Non Members	\$ 12.00	
Calendar Sales:Shipping	\$ 5.00	
TOTAL Calendar Sales	\$ 446.00	\$ 2,800.00
Interest Inc	\$ 18.00	\$ 50.00
<b>Library Income</b>		
Library Income:Fees	\$ 20.00	
TOTAL Library Income	\$ 20.00	\$ 250.00
<b>Membership Dues</b>		
Membership Dues:Family	\$ 722.50	
Membership Dues:Individual	\$ 2,320.85	
TOTAL Membership Dues	\$ 3,043.85	\$ 6,000.00
<b>Merchandise Sales</b>		
Merchandise Sales:Sales to Members	\$ 25.00	
TOTAL Merchandise Sales	\$ 25.00	\$ 5,500.00
Newsletter Postage Donation	\$ 28.00	
Rental		\$ 50.00
Return of National Finals Donation		\$ 2,000.00
TOTAL INCOME	\$ 3837.35	\$ 17,200.00

**Approved NEBCA Financials 1/1/17-4/30/17** *continued*

EXPENSES		
Administrative	\$ 216.14	\$ 600.00
Advertisement	\$ 50.00	\$ 200.00
Awards and Gifts		\$ 350.00
Bank Charges	\$ 9.24	
Calendar Expense	\$	\$ 1,500.00
Insurance		\$ 650.00
Learning Trials		\$ 400.00
Library	\$ 7.06	\$ 350.00
Merchandise - Cost of Goods Sold	\$ 2,442.58	\$ 4,000.00
Newsletter: Postage	\$ 236.66	
Newsletter: Printing	\$ 244.40	
Newsletter: Supplies	\$ 74.96	
Total Newsletter	\$ 556.02	\$ 2,500.00
Pamphlets		\$ 350.00
PayPal Transaction Fee	\$ 41.66	\$ 45.00
Trial Expense		
Fall Foliage Reimbursement (2016)	\$ 400.00	\$ 2,000.00
Novice Finals awards (2016)	\$ 58.32	\$ 2,000.00
National Finals donation (2017)	\$ 5,000.00	\$ 5,000.00
TOTAL EXPENSES	\$ 8,781.02	\$ 19,945.00
TRANSFERS		
FROM PayPal	\$ 1,420.00	
	\$	
TO Bank Of America Checking	(1,420.00)	
TOTAL TRANSFERS	\$ -	
	\$	
OVERALL TOTAL	(4,991.67)	
Account Balances	12/31/2016	5/12/2017
Bank Accounts		
Bank Of America Checking	\$ 25,786.56	\$ 21,308.87
ING Business Savings	\$ 13,702.62	\$ 13,720.62
TOTAL Bank Accounts	\$ 39,489.07	\$ 35,029.49
Cash Accounts		
Cash Account		\$ -
	\$	
PayPal	1,299.47	\$ 767.49
	\$	
TOTAL Cash Accounts	1,299.47	\$ 767.49
OVERALL TOTAL	\$ 40,788.54	\$ 35,796.98

## Mark Elliott Sheepdog Clinic 2017

By Sallie Butler



Paul Batz

Mark Elliott helped Sallie Butler and her kelpie Lucky prepare a line of sheep for splitting into two groups

An excellent trainer and sublime, spring weather made four splendid days at the sheepdog clinic organized by Julie Williams in Rhinebeck, NY, June 1-4, 2017.

Mr. Mark Elliott of Cumbria, England, has earned his place on the English Nationals team approximately one dozen times, and has run in the Supreme and World trials. His recent June visit was his second to Rhinebeck, and we thank Julie for her efforts in making these clinics possible, and offering her healthy flock of Cheviot crosses.

Maybe it isn't astonishing that an accomplished handler like Mark observed dogs and handlers never seen before and, within seconds, offered constructive, detailed advice for progress. Mark's enthusiasm for sheepdog work meant that he began each day's clinic early, and participants rarely looked at clocks as the time seemed to evaporate.



Paul Batz

Mark Elliott instructs Joy Senter Wahby and her border collie on driving



Paul Batz

Mark Elliott helps Debra Deis and her border collie Anna

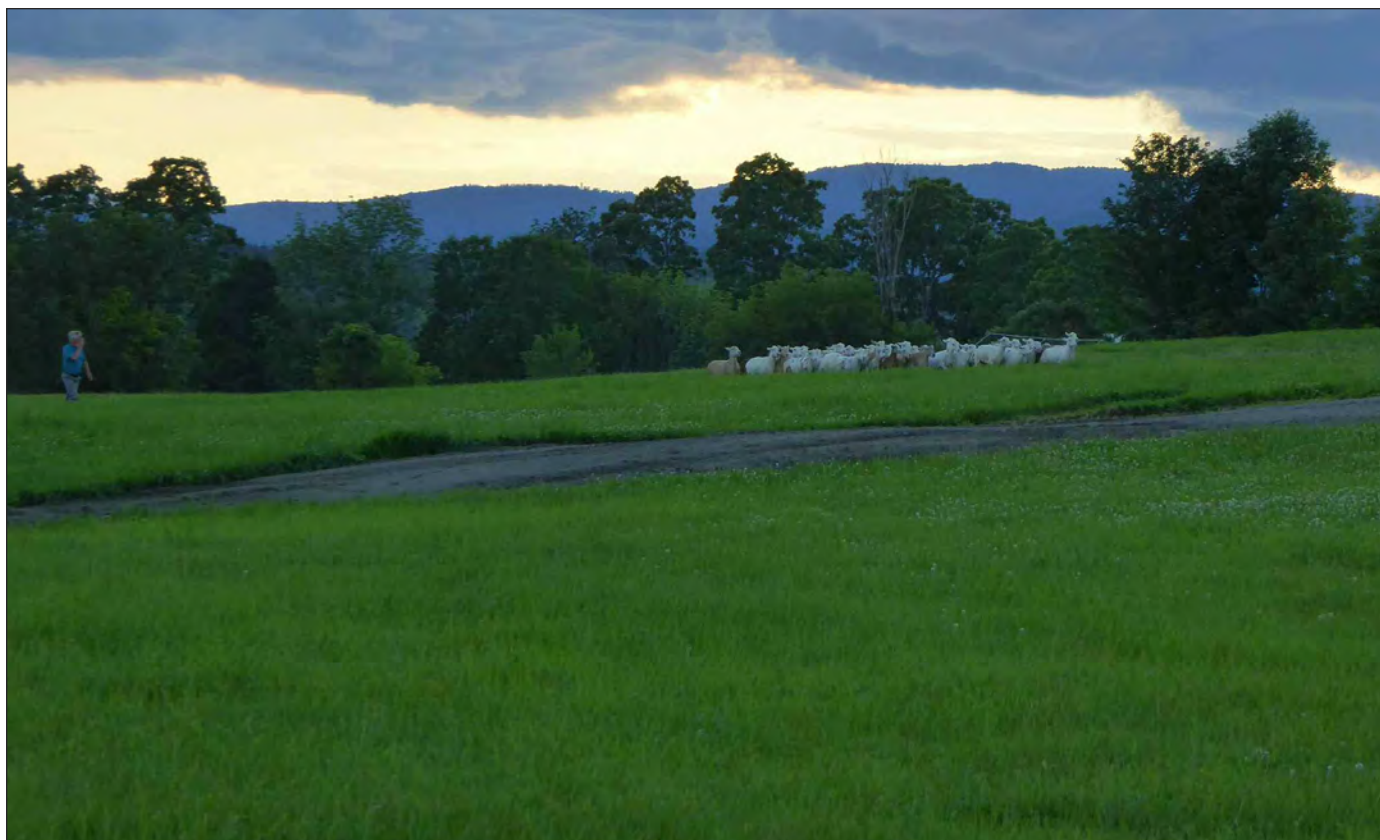
*Why squander even one point  
when turning the post?*

*Here's how to straighten the cross-drive line  
for the looser-eyed dog.*

*Setting up properly is essential to obtain a  
fully-pointed shed.*

Several attendees were repeat participants from Mark's first clinic, held last year. Mark noted improvements, and encouraged more advanced work. Mark helped beginner to experienced dogs and handlers, and a variety of breeds – border collies, an Australian shepherd, and working kelpies.





Nancy Phillips

Mike Nunan gathers the flock prior to loading into the holding pens

## Dancing Ewe Sheepdog Trial 2017

By Nancy Phillips

On July 8-9, I attended Dancing Ewe Farm SDT in Granville, NY. It has been a rainy spring and summer, which has created many challenges, but the lush pastoral landscape at the farm was produced by the rain, too.

The rolling 300 yard outrun had a challenging lift, fetch, and drive. The wily Ames' sheep kept handlers' on their toes. If you were not quick with your whistle nor your dog quick to its feet, your sheep would outrun your dog back to the setout.

There were many fine runs judged by Joyce Geier. Warren Mick and Eddy won the trial the first day, Barb Levinson and Bob on the second day, and Mary Thompson was the overall winner for the weekend.

Friday night was a pizza party and on Saturday night, once again, we were treated to an elegant Italian dinner made by Luisa Somers. During the day there was a food truck that provided quality produced local food for sale. One could also sample craft beer during the trial.

Thank you to all that volunteered to help with the trial. It does take a small army to produce a fine trial. Finally, thank you to Jody and Luisa Somers and Joanne Krause for putting on this trial. I do hope they will continue to share this lovely spot. Do come to the next trial to dance with the sheep.





Kate Collins

Barbara Levinson and Bob send the sheep through the Maltese Cross at Dancing Ewe Farm trial in Granville, NY



Sharon Woolman

Heather Millen and Scout shed successfully at Borders on Paradise trial at the Fettermans' farm in Turbotville, PA, in May 2017



## Taravale Farm & Kennel Novice Trial 2017 - From Novice Handlers' Perspectives

By Lori Tsuruda

Barbara and Bernie Armata generously hosted 43 eager handlers and 51 dogs on June 10 and 11. Since some areas could not be mowed due to a wet and muddy week, they changed the trial course to just one pen for both holding and exhaust in a far corner, with the handler's post on the opposite end of the field as compared to their past trials.

Judge George Northrup, having also judged the novice classes at the Massachusetts Sheep & Wool Festival Sheepdog Trial in Cummington two weeks prior (with its closely mown field and the Ames' sheep), noted that the higher grass and the Armatas' Scottish Blackface and Katahdin sheep made the Taravale course more challenging and thus tended to cause anxiety among inexperienced dogs, which sometimes resulted in their slicing flanks, not lying down, etc. Pro-Novice 2 winner Josh Newcomb noted, "They showed me exactly what I need to work on." Although Amy Hershberger was pleased that Intrepid Sue did wide outruns, she lamented, "We just did not get our stops," a common refrain throughout the trial from those who do not practice with unforgiving sheep.

During the first novice-novice trial, only three (out of 17) handlers were able to pen the pen-averse sheep with their dogs. Fortunately, as handlers and their dogs became better acquainted with the sheep and course, increasing numbers of pens were made over the weekend.

Joan Worthington, who won Ranch 1, was second in Ranch 2, and was reserve champion, had a noteworthy first pen: She penned the two sheep who went in, and then she gently convinced the third sheep to join them through the partially closed gate.

Novice-Novice 1 & 2 winner, and overall champion Teresa Powers reflected, "I'm glad she (Chaos) listened better than she normally does. She took a flank for the first time for penning. We were lucky." Melissa Perley was not as lucky with Bronte, who "didn't want to take an away flank for me, which cost us, especially at the pen," but was pleased that her dog worked well on areas on which they had focused their practice, particularly since this was only her second trial.



The tall grass provided a learning situation where handlers needed to watch the reaction of the sheep. Deb Duarte, who won Pro-Novice 1 with Jillie driving very straight lines, noted, "It was hard to run in the taller grass....Short handlers could not see their dogs (on their outruns)."

Handlers and dogs enjoyed the trial, whether they placed or not. Caleb Johnson placed fourth in Novice-Novice 2, yet was simply pleased that Jim and he were able to finish the course, having retired the past three years. Most handlers who retired their dogs still felt good about their trial experiences.

On Saturday, many handlers took advantage of the opportunity for non-competitive runs. Melissa Perley tried running Sam in ranch and found it "a relatively stress-free experience," was pleased that he did well, and "gained a whole new perspective on ranch."

The Whistle Challenge motivated many novice handlers to aim for clear stop and flanking whistles that their dogs would take. Barbara and Bernie Armata provided good feedback and fun prizes for the winners who achieved the best whistles and responses.

All handlers expressed their deep gratitude to the Armatas for hosting, Warren Mick and Denise Leonard who held out; Mel Hanchett and Mary Wasielewski who wrestled sheep in the pen; ad Rose Redick who collected entries and organized the scores. Barb and Bernie appreciated all of the handlers who pitched in with set up and helped during the trial.



## Tanstaaf Farm Novice & Learning Trial 2017

By Melissa Perley

It's 7:15 a.m., and cars are lining up to roll into Denise Leonard's driveway for the Tanstaaf Farm trial in Greenfield, MA, on June 24. Hatch doors swing open revealing all available spaces stuffed with crates, coolers, dogs, and rain gear.

Everyone settles under trees along the field's edge. The judges' tent pops up just in time for the first serious downpour. Novice handlers wander the course; stopping to gauge the uphill outrun and to make note of the line to the small pen..

This field offers unique challenges: the hold-out is not terribly far from the enclosure that serves as set-out, exhaust, and, on any other day, sheep cafeteria. If this stew weren't hot enough, Denise and Chris Bowen have infused additional spice by adding a this-year's lamb to two of Denise's ewes for each grouping.

A right-side outrun that would put the dog coming in at twelve o'clock means a wide flank along the barn, past the set-out and up, and around a grouping of trees taking the sheep out of the sight of the dog momentarily. A lot of dogs feel that pressure and come in early to cover their sheep. This creates good work for the team of dog and handler.

Chris judges the morning trial while Denise takes notes.

There is a drastic weather change in the afternoon. Off comes the rain gear as the sun emerges and temperatures rise. Denise judges while Chris takes notes. Overall it seems that dogs and handlers have benefited from already having run once; scores are higher.

It is, as with all trials, a day filled with success and disappointment. Everyone gathers as Chris and Denise offer up the mentoring piece for the day - gentle, spot-on critique and good-natured chiding.

We pull our drying raincoats from tree branches, fold chairs, leash dogs, and bid goodbye to friends old and new, appreciative of the opportunities in a learning trial.

This trial was held as a benefit for NEBCA.



Sallie Butler

Jean-Louis Bigourdan and Kelso direct the grand vista from the Open post

## Bobtail Sheepdog Trial 2017

By Sallie Butler

Dawn's rosy light spilled across the splendid hills of Dave and Debbie Fetterman's farm on June 10-11 in Turbotville, PA. Gathering sunlight lit the grazing flock of commercial sheep that were the focus of two Pro-Novice and Open trials, plus one Nursery trial. On Saturday, P/N high scores were earned by Carolyn West and Isla, followed by Jean-Louis Bigourdan and Skye. Sunday's P/N leaders were Mary Brighoff and Sid, and second, Cynthia Palmer and Pippy. High-in-Trial for P/N was won by Mary Brighoff and Sid. Saturday's USBCHA Nursery winners were Michelle Brothers and Mac.

High score in Saturday's Open competition was carried by Pam Davies and Teilo, with Michelle Brothers and Sky next-highest, of 54 dogs. Sunday's Open trial saw Michelle Brothers and Sky with top score, and Lori Cunningham and Lefty second, of 52 dogs.

In the day's heat of Sunday's Open event, Judge Rob Drummond created a ten-point substitution for shedding, made of two pair of narrowly-spaced traffic cones, to be accomplished (or attempted) after successful pen. First was a drive-away, push-through pair of cones, through which at least one sheep had to correctly traverse, before turning sheep clockwise to the second pair of cones, set as a pull-through, with the proviso that once the sheep passed forward of the plane of the pull-through cones, the run ended, whether or not the sheep had traveled correctly through the pair of cones. Judge Drummond's cone-threading system was as clever as any element of Roger Deschambault's designs for challenging Points-and-Time events.



Beth Murray

Scribe Sharon Harris (*left*) and Judge Angie Coker-Sells

## Caora Sheepdog Trial 2017

By Dave Sharp

The fourth Caora Farm Sheepdog Trial, hosted by Miche Ferraro and Kak Weather, was held June 15–18, in Millerton, NY. Caora is a 78.5 acre working sheep farm preserved this year in partnership with the Dutchess Land Conservancy to sustain the Hudson Valley's agricultural heritage.

Angie Coker-Sells of Oklahoma was our distinguished judge and sorted out both Nursery and Open runs. The sheep were Caora Farm's North County Cheviot crosses and were even throughout the trial.

In Open 1, we could send either way with room to spare up a medium- sloped hill to the set-out. A tricky drive was followed by a split, pen and single. Open 2 was streamlined with the same gather and drive followed by a pen and shed.

Competitors came from all over North America, including Vancouver Island in Western Canada.

Everyone enjoyed the pot-luck dinner which featured brined turkey breast roasted to perfection.

Donald McCaig was heard to say that the trial field was as nice as any he has seen throughout the US and UK.

Maria Amodei received the Libby McClintock award for her promising Nursery dog!



Beth Murray

Sue Schoen in the shed ring



## Cascade Farm Trial 2017

By Bud & Mary Ames

THANK YOU, THANK YOU, THANK YOU to everyone who pitched in to keep the trial going under unusual circumstances in Bath, NH, July 1-3. Due to the heavy rainfall Saturday afternoon our trial field became a mud field. We offered "Kubota Towing Services" (*Dave Young and Blake Anderson!*) as several cars needed pushing or towing in order to leave. A flash flood alert was issued for our area just after the handler's dinner. Handlers camped next to the river kept us apprised of the rising water.

When we were told it was starting to look "awfully high" we started moving everyone to higher ground. We managed to stash everyone in various safe areas for the night. Not knowing how high the river might go into the field we removed anything that wasn't staked down (*including all the chairs handlers left under the tent!*). The condition of the field in the morning would determine if we could continue or cancel. We made it to bed around 11 pm.

Early in the morning we checked on everyone. There was standing water in various places the field, but no debris! Handlers pitched in to get everything back into place, set, and ready to go. The sun came out and everyone smiled. The "gator" became the "Muddy-Uber." Jim Murphy also helped shuttle with his golf cart.

There were lots of excellent runs and handling of dogs. Mike Nunan and Cap had the best Open run with a 91. Beverly Lambert and Lee had the best Ranch and Nursery runs with an 81. Kate Collins and Pearl had the best Pro-Novice run with a 69. Blake Anderson and Euchre had the best Novice run with a 71. Dave Young & Pic - Open Champion, Beverly Lambert & Joe - Open Reserve; Beverly Lambert & Lee - Ranch Champion, Nancy Phillips and Dewy - Ranch Reserve; Kate Collins & Pearl - Pro-Novice Champion, Betty Belliveau & Ava - Pro-Novice Reserve; Blake Anderson & Euchre - Novice Champion, Teresa Powers & Chaos - Novice Reserve. Double Lift Champion was Beverly Lambert & Nan, Reserve Champion went to Dave Young & Pic.



Ginny Prince

Water hazard at Cascade's Open field on Sunday

We want to give a shout out to the following people:

Mike Nunan – Setting sheep for NN, PN and in Open, AND working the sheep pen all three days.

Nara Burgess – Making mugs to give out to the class champions AND working the sheep pen

Becca Murray – Working diligently in the sheep pen all three days.

Ginny Prince – Working in the sheep pen, setting sheep, and administering first-aid as needed to the sheep for all three days.

Betty Murray – Being on hand to tally and record scores for all three days.

Barbara and Bernie Armata – Fairly and consistently judging of all classes for all three days.

Dave Young– Towing expertise and for help with the trial.

Blake and Julia Anderson - Staying through to the end and volunteering to help "Rover" or hold during the double lift as well as helping people stuck in the mud.

We really appreciate all the handlers who took the time to personally thank us and trial judges, Barbara and Bernie Armata. It's the small courtesies like this that keep us all coming back year after year.



## Fetch Gate Farm Novice Trial 2017

By Pam Mueller

150 sheep. 114 dogs. 72 handlers. 3 days. 1 long-suffering judge, Ron McGettigan. It's Fetch Gate Farm in Cortland, NY, in late July. From Nova Scotia to Virginia, New Brunswick to Oregon, and many points in between, handlers and dogs arrived. Despite flooding of farm and home, and the caterer canceling at the last minute, Roger and Heather Millen pulled off their 12<sup>th</sup> annual Novice Trial. Beautiful field, well-behaved (for the most part) sheep, stunning weather - cool mornings warming up to 75--with not a drop of rain. The camping field was busy, the handler's tent filled with animated conversation, and, of course, precise armchair handling.

Two weeks before the trial, a flash flood at the Millen's farm swept away the new bridge connecting the outside world to the trial field. (*The old bridge was lost to a smaller flood in 2015.*) No matter; a 24" plank created a walkway for people and dogs to cross the creek, and the show went on, much to everyone's relief.

Fetch Gate is a trial with all the trimmings, from Friday night pizza and Saturday catered BBQ complete with that much-loved homemade carrot cake, to coveted prizes: themed handmade crate mats by Carolyn Pover, border collie wooden and metal cut-outs created by Don Desrosiers, and dog paraphernalia donated by Country Max of Cortland. Many thanks to John and Cynthia Palmer, who adeptly oversaw the set out all three days.

Saturday's Ranch class was capped by an exciting run-off for first, wherein Pam Wataha's Ace and Becky Bellaman's Czeckers struggled, much to the crowd's amusement, with sets of three ram-bunctious lambs. Czeckers took home the blue by a point.

We all know this sport of ours relies on a lot of donated labor and funds. Fundraising at Fetch Gate included impromptu donations to the "Replace the Bridge" fund by many handlers, as well as \$495 raised for the National Finals by sale of merchandise including more beautiful crate mats from Carolyn. Like all trials, volunteers were everywhere, behind and in front of the scenes; too many to name, but a special shout-out is due to Jean-Louis Bigourdan, who seemed to be everywhere.

NEBCA News, Volume 35, Issue 3



Susanne Foster Brown

Roger Deschambeault and Trim navigate sheep through obstacles set on NH FarM Museum field

## New Hampshire Farm Museum Trial 2017

By Tim and Lisa Molinero

The first NH Museum Farm Trial was run under perfect weather conditions on June 3rd. The sheep and field proved challenging for the 22 dogs in the first Time-and-Points trial of the season, judged by Carroll Goodwin. With some tweaks, we look forward to an even better trial next time.

### Now Available!



## NEBCA 2018 Calendars

Only \$10 each +Shipping\* (\$2.65 US/\$4.15 Canada)

Each month features a different northeast region Border Collie. Inside photos are black and white. Calendar sales benefit NEBCA.

### Two Ways to Buy:

Contact George Northrop  
978-249-4407 or [george01368@yahoo.com](mailto:george01368@yahoo.com)  
or

Use PayPal <http://www.nebca.net/calendars.html>

\*If you order calendars and renew your NEBCA membership at same time, calendars **ship free**.

## 2017 Breeders Directory

**Maria Amodei**

North Face Farm  
Dunstable, MA 01827  
978-842-4505  
mariaamodei@verizon.net

**Barbara & Bernie Armata**

Taravale Farm and Kennel, LLC  
1165 Esperance Rd.  
Esperance, NY 12066  
518-875-6471  
taffaway@aol.com

**Kate Collins & George Northrop**

Aurora Ranch  
Box 119, 46 Taft Hill Rd.  
Royalston, MA 01368  
978-249-4407  
george01368@yahoo.com  
www.auroraranch.com

**Evelyn M. Doran**

PO Box 1314, 25 Narcissus Rd.  
Littleton, MA 01460  
978-360-7417  
evelyndoran@comcast.net

**Rob & Betsy Drummond**

Liberty Tree Farm  
200 Stowe Mountain Rd.  
Hillsboro, NH 03244  
603-478-0846  
rob@brailsfordco.com

**Lowell & Patricia Kallen**

464 Senevet Rd.  
Woodstock, CT 06281  
757-371-6822  
patricia628@earthlink.net

**Nathalie Labelle**

1140 Concession 10  
Alfred, ON K0B 1A0  
Canada  
613-290-5405  
borderpup2000@yahoo.ca

**Barbara Leverett**

1512 Burrell Rd.  
St. Johnsville, NY 13452  
518-568-2833  
rleverett@frontiernet.net

**Nancy Liptak**

5699 Rock Bottom Rd.  
Oxford, NC 27565  
301-351-4937  
nancyliptak@aol.com

**Steve Wetmore**

Spring Valley Farm  
70 Wetmore Rd.  
Strafford, VT 05072  
802-765-4466  
swetmore51@gmail.com

**Dick & Cheryl Jagger Williams**

Culleymont & Sheepy Hollow Farms  
4825 State Route 2002  
Hop Bottom, PA 18824  
570-289-4733  
www.jaggerwilliamsbordercollies.com

Note: Not all breeders listed here are necessarily handlers.

This listing of Border Collie breeders is for informational purposes only and in no way represents an endorsement of these breeders by the North East Border Collie Association (NEBCA).

When making inquiries into purchasing a pup, NEBCA strongly recommends selecting from sound, proven, working stock. We suggest that you see both parents work. If you are unable to see the parents working at a farm, do attend trials and see them working there. Also watch for trials results and seek the advice of experienced handlers.

### Five Ways People Are Like Sheep

By Ginny Prince

1. They butt heads.
2. They get set in their ways and want to eat and sleep at the same time every day.
3. As individuals they don't want to be told what to do, but are happy to go along with the crowd.
4. They like to sunbathe in January and nap in the shade in August.
5. If they get away with something once, they'll try to do the same thing at the next opportunity.

## Upcoming 2017 Trials

Details and links at <http://nebca.net/trialschedule.html>

Sep 15	NH Highland Games Open SDT	Loon Mountain Lincoln, NH	One Open Points NEBCA	Lynn Deschambeault 207-452-2898
Sep 9-11	Long Shot Trial	Church Hill, MD	Two Open, Ranch, ProNovice & USBCHA Nursery USBCHA/NEBCA	Sherry Smith 410-758-3363
Sep 15-17	Pipedream Farm SDT	Middletown, MD	Two Open, Nursery One Novice, ProNovice, Ranch USBCHA/NEBCA	Mark & Renee Billadeau 301-293-2797
Oct 1	Fryeburg Fair SDT	Fryeburg Fairgrounds, ME	One Open Points & Nursery NEBCA	Gabrielle Merrill 207-935-2520
Oct 7-9	Shepherd's Crook Fall Triple Crown SDT	Woodville, ON	2 Open, Novice, & Nursery USBCHA/NEBCA/OBCC	Viki Kidd 416-277-4313
Oct 10-12	Indian River Triple Crown	Indian River, ON	Two Novice, PN, Ranch & Open USBCHA/NEBCA/OBCC	Cynthia Palmer 705-295-3351
Oct 13-15	Swaledale Triple Crown	Blackstock, ON	Two Open, Novice, Nursery USBCHA/NEBCA/OBCC	Sheri Purcell 289-314-0999
Nov 4-6	Long Shot Trial	Church Hill, MD	Two Open, Ranch, ProNovice & USBCHA Nursery USBCHA/NEBCA	Sherry Smith 410-758-3363
Dec 1-3	Long Shot Trial	Church Hill, MD	Two Open, Ranch, ProNovice & USBCHA Nursery USBCHA/NEBCA	Sherry Smith 410-758-3363

**Trial Results** also at <http://nebca.net/trialschedule.html>



**2018 NEBCA Calendars  
Available Now!**  
Details on page 18.



**NEBCA CLASSIFIED ADS** \$5 per issue for up to 10 lines, \$1 per line over 10 lines. \$15 for one year.

### Border Collie Training Services

In-house training specializing in giving young dogs a great start. Handling Border Collies for over 20 years. References available. Lessons also. Barbara Leverett, St. Johnsville, NY.  
518-568-2833

[rlleverett@frontiernet.net](mailto:rlleverett@frontiernet.net)

Merlynn Kennels Border Collies and Katahdin Hair Sheep. Merle and black & white puppies; occasionally started dogs. All breeding stock OFA certified/eye checked. Proven producers of trial and obedience and agility winners. Katahdin Sheep (originated in Maine), excellent for working dogs, no shearing/tail-docking necessary. Lynn Deschambeault, Merlynn Kennels, 342 Hio Ridge Rd., Denmark, ME 04009.  
207-452-2898, [merlynn@fairpoint.net](mailto:merlynn@fairpoint.net)

Looking for a place or two to rent in the Northeast (NY Finger Lakes or further north) with my border collies, May-June-July, 2018. Hoping to spend early summer in northeast to compete in trials I've never been able to attend. Dates flexible. Would love a place with sheep access; am experienced at farm sitting and am a good shepherd. Can provide references. Let me know if you can help make this trip work! Interested in swapping living arrangements? My farm outside of Oxford, NC will be available. Nancy Liptak & Bean, Ben, Paco, and Fly. We are mostly good dogs, as all border collies are. Our Mom is a good soul as well.  
[nancyliptak@aol.com](mailto:nancyliptak@aol.com) preferred,  
or 301-351-4937