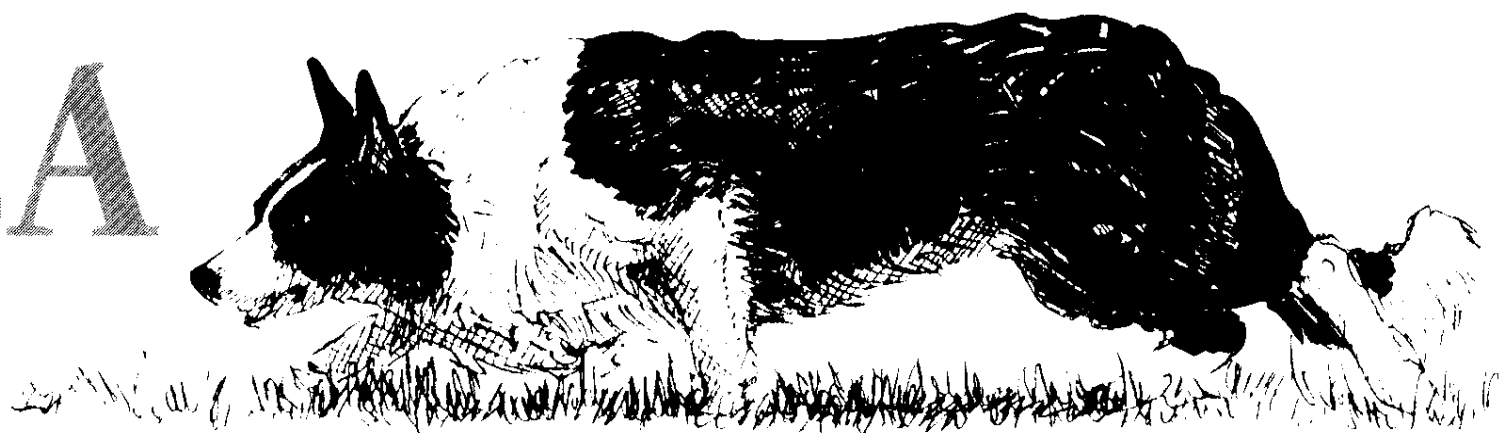


# NEBCA news



SUMMER 2000 AN OFFICIAL PUBLICATION OF THE NORTHEAST BORDER COLLIE ASSOCIATION VOLUME 18, NUMBER 1



## Trial Readiness

*Is your dog ready for the  
walk out to the post?*

*By J.P. Lalonde*

Recently I was asked about what it takes to have a dog in shape and ready to be competitive on the trial field. This is a great question and one that novice handlers should spend some time thinking about.

Handlers are always talking about the difference between farm and trial work, training finesse and what makes a great trial dog. There's no doubt you have to start with a dog that wants to get out there and get the job done. The health and condition of your dog is an important aspect, as an unthrifty dog will not take the pressures of trial-ing. Farm dogs that get worked every day and kennel dogs that are well exercised will have no trouble staying in good running weight. You should have a dog that is healthy, physically and emotionally mature, and ready to train for the trial field.

During any dog's training, you soon identify its strengths and weaknesses. You may have to alter your training technique to encourage what has come natural to this particular dog, such as a good natural outrun, pace, etc., and try to train out really bad habits like unprovoked gripping. Some problems are inherent to the dog's psyche and

become part of your training with the dog for the rest of its life. This does not mean that this dog cannot be a good or even great trial dog. It means that you as its handler must be consciously aware of these weaknesses and be constantly training under varied situations so that you will know how the dog will react when that situation occurs on the trial field. I ran a dog in Open for nine years and my son now runs her in Pro-Novice. At 11 years old, she probably could run a trial course blindfolded, but if you want to be competitive with her, you still have to train to her old problem of being too pushy before each and every trial.

At my farm, my 6-year-old Jet does most of my farm work and is expected to hold sheep away from the feeders to allow me to drop in round bales. He does his job adequately. However, knowing the dog, I feel he truly lacks confidence. But he does his job well because he's a dog that loves to please me. Again, this is a dog that can't go from the farm gate to the trial field.

Having said that, this dog has tremendous out-running qualities, will cover any distance, has a tremendous lift, and pace. When things go well, I sometimes find myself in the shedding ring

*Continued on page 2*

## Get ready for the NEBCA Finals

The NEBCA Novice Finals will be held September 16 & 17 in Esperance, NY at the farm of Bernie and Barb Armata.

To compete in the finals you must have earned at least one trial point, by scoring 50 or higher in a NEBCA-sanctioned Novice trial. Dogs must run in the highest class in which they have earned a point over the course of the season.

For more information, call George Northrup at (978) 249-4407. Nancy Ortiz will have registration forms available at many upcoming trials, and we hope to include them in a mailing later this summer.

The Fall Foliage Finals will be held Columbus Day weekend. The Old Chatham Sheepherding Company will host the trial again. For more information, contact Carol Campion at (860) 455-9416.

### inside this issue

Trials and Tribulations.....	3
Hot Dogs .....	4
Trial Results .....	6 - 11
Meeting Minutes .....	12
Novice Points .....	14
Trials & Clinics .....	16
Classifieds .....	18
NEBCA merchandise .....	19
Incorporation Update .....	19
Breeders .....	20

# Welcome!

The trial season is in full swing! It's great to get back out on the road, make new friends, see the regulars, and see how dogs are progressing. This issue, which comes later than originally planned, is full of trial-related information. We have novice point standings, trial results from all over the region, and an updated listing of upcoming trials.

J.P. Lalonde contributes an article on how to make sure your dog is ready before you venture out to the post, and Newsletter Team Member Lori Cunningham tells us how not to make that long walk in a new occasional column, Trials and Tribulations.

Remember that this newsletter can only be as good as the material that's submitted to us. If you have an idea for an article, please contact one of the team members:

- Bill Foshier, 14 Village Road, Surry, NH 03431, or bill@luckydogdesign.com
- Lori Cunningham, RD 1 Box 266A, Milton PA 17847, or lcunningham@bop.gov
- Molly King, 15 Doral Farm Road, Stamford, CT 06902, or king.molly@worldnet.att.net

We particularly need trial hosts to get results to us as quickly as possible after the trial. And we need photographs!

— Bill Foshier

## Trial Readiness

*continued from page 1*

having lost only 3 or 4 points. Knowing the fact that this dog has a problem with people (and that can include me!), and that he doesn't like tight pressure situations, I often lose 6 to 8 shed points and my run is toast. But if I do lots of shedding practice before a trial and try to realize things like where the exhaust is and which of the sheep is the lead sheep, and how the crowd factors in, I can help my dog overcome his problem and be successful.

Just going out and "droning" a dog over and over on a trial practice course can be counterproductive. Some dogs do better if they are worked for a few days and then have no training for a couple of days just before a trial. However, most dogs I see often need more experience. If they're "just good enough to get by" at home, they will likely have trouble on a strange field with strange sheep. Walt Jagger once told me early in my own training that a dog had to be three times as wide on its outrun and flanks at home to be near right on a trial field. I know handlers from all over the world and although their dogs are much better than mine, they all believe in the same theory: It takes a lot of training to get a competitive dog and it takes still more training to keep it there. I often think of a saying I once heard, "practice as you played; and play as you practiced."

Good luck.

## NEBCA News

14 Village Road, Surry, NH 03431

Editor: Bill Foshier

(603) 355-8115

Newsletter team: Lori Cunningham, Molly King, Joanne Krause, Lynn Zimmerman

## NEBCA Officers

President: Cheryl Jagger Williams  
RR 1, Box 1374, Hop Bottom, PA 18824  
(570) 289-4733

Vice President: Denise Leonard  
389 Adams Road, Greenfield, MA 01301  
(413) 773-5232

Secretary: Warren Mick  
Meadowdale Road, Altamont, NY 12009  
(518) 861-5854

Treasurer: Joanne Krause  
571 Westchester Rd, Colchester, CT 06415  
(860) 267-6125

## Board of Directors

Cheryl Jagger Williams  
RR 1, Box 1374, Hop Bottom, PA 18824  
(717) 289-4733

Barbara Leverett  
1512 Burrell Rd, St. Johnsville, NY 13452  
(518) 568-2833

Eve Marschark  
Box 397, 3118 Farm School Road  
Bedminster PA 18910  
(215) 795-2023

Becky Peterson  
41 Bell Road, Leyden, MA 01337  
(413) 624-5562

Steve Wetmore  
Box 54, Strafford, VT 05072  
(802) 765-4466

## Open Trials Committee

Chairperson: Carol Campion  
109 Hammond Hill Road  
Hampton, CT 06247  
(860) 455-9416

## Nursery Trials Committee

George Northrup  
PO Box 119, Taft Hill Road  
Royalton, MA 01368  
(978) 249-4407

THE NEBCA NEWS is published quarterly as the official publication of the Northeast Border Collie Association. Four issues are published yearly: Spring, Summer, Autumn, Winter. Other supplements may be issued during the trialing months. Subscriptions are acquired through membership to NEBCA. Annual membership dues are \$20.00 per individual, \$25.00 per farm/family  
[www.nebca.cornell.edu](http://www.nebca.cornell.edu)

To join, send your name, address, and the above listed dues to:  
Warren Mick, 750 Meadowdale Road  
Altamont, NY 12009  
Please make checks payable to:  
NEBCA

## Trials and Tribulations

Last year was my first season of trialing with my dogs. We did quite a few trials, but the PA State Championships at Hop Bottom was the biggest. Because of the large entry, trial managers frequently reminded us to be in position and ready to run when it was our turn. A staging area was set up for teams to wait while they were "on deck". The on-deck area was at the post end of the field, somewhat out of view of the spectators and most of the other handlers.

My Novice-Novice dog, Nick, and I stood nervously fidgeting in the waiting area. As the team in front of us finished their run and we started through the gate onto the field, one of Nick's hind feet slipped through the loop of my shoelace on my left shoe. Unknowingly, Nick kept walking and literally pulled my foot from under me, causing me to crash to the ground. As Nick panicked and cried (with good reason since I had just fallen on his head), he spun around a few times which succeeded in twisting my shoelace loop tighter and

tighter around his foot, lashing us together as if for some sick 3 legged (5 legged?!) race. After thrashing around on the ground for what seemed like a week while pulling on Nick's leg, I finally managed, with considerable effort, to detach his pinched little foot from my dog-toe-eating shoelace, leaving quite a bit of fur behind.

We both proceeded shakily to the post. I sent Nick on his outrun. He went out about 10 feet then stopped, and turned around to look at me with his best totally disgusted dog look as if to say, "Are you crazy?" then turned and went on his way. I don't really remember the rest of the run because I was concentrating on trying to wear around the course without tripping over my untied shoelace.

Needless to say, we weren't in the ribbons that day.

— Lori Cunningham

*Share your humorous stories from your trials and tribulations! Send them Lori Cunningham or Bill Fosher.*

*Dear NEBCA Friends,*

*Thank you!*

*As you probably know, we had no insurance when our house burned on Christmas day. I got a loan from the State Credit Union and purchased a second-hand trailer, but before we could get the debris cleaned up and the trailer in, the storms came.*

*We finally got the trailer on May 1 and were wondering how we could afford to put in the water, sewer, and stairs. Thanks to you we now have all three.*

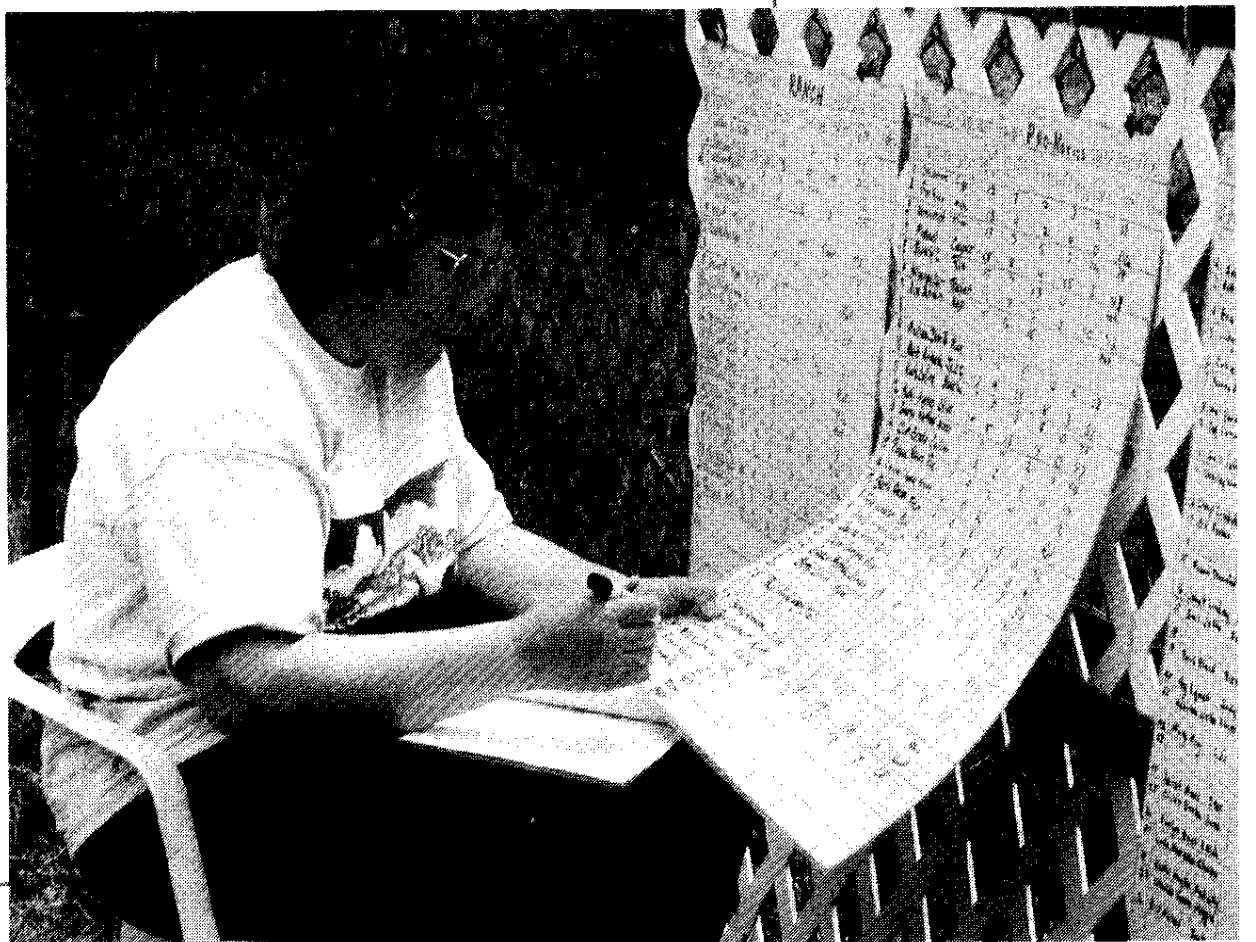
*When Cheryl and Steve passed the hat at Pennsylvania and Connecticut, the amount raised was almost exactly what the water, sewer and stairs cost. I can't tell you what a wonderful surprise that was. The excavator and gas company have agreed to time payments, so we are no longer homeless.*

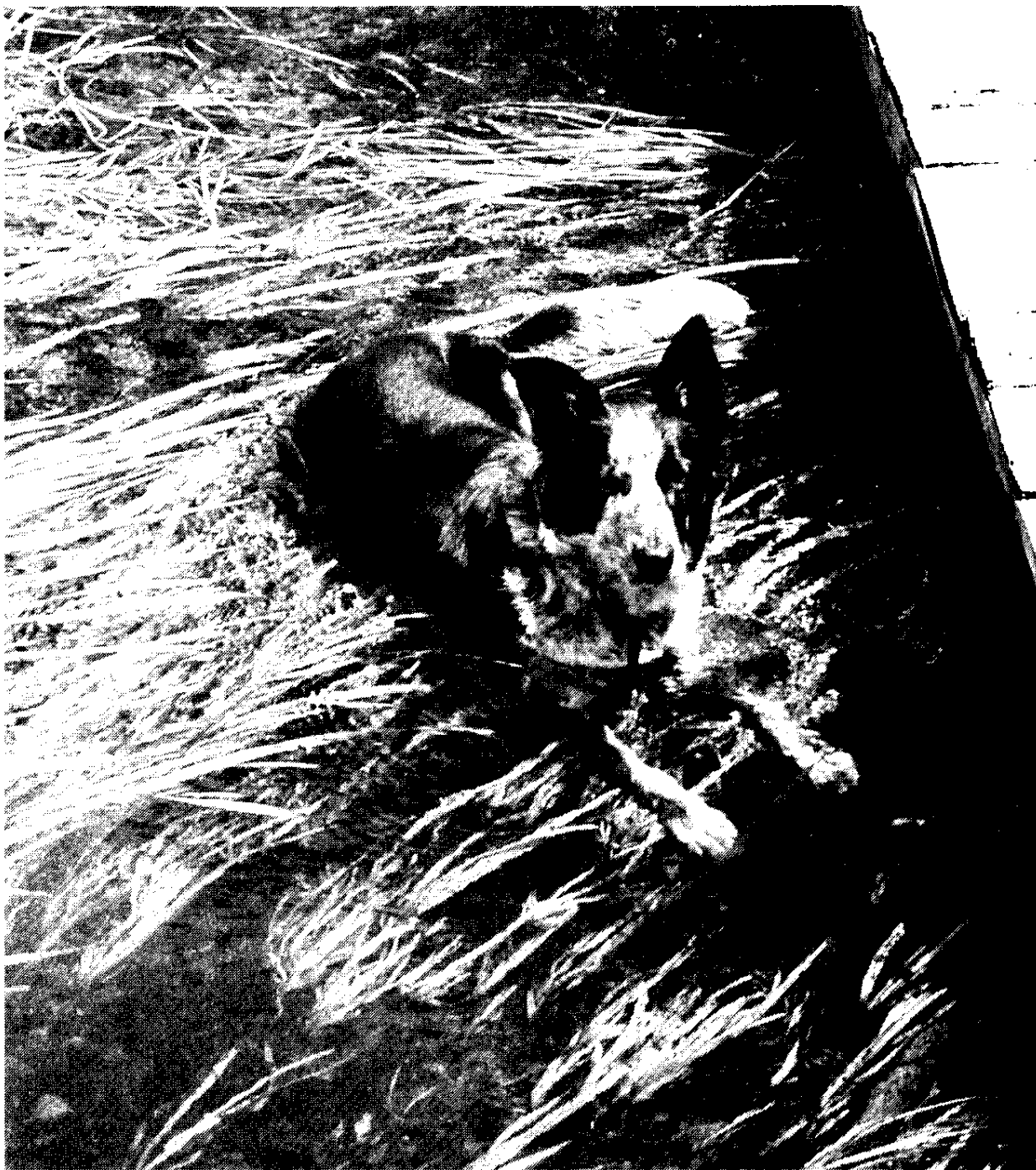
*Words cannot express our gratitude. Thank you! Thank you! Thank you!*

*Sincerely,*

*Betty Murray & Family*

*Betty Murray posts scores at the Massachusetts Sheep and Wool Festival*





# Working When It's Hot Outside

*Dogs can use a quick dip in a stream to help cool down on a hot day.*

As the heat and humidity of another Northeast summer settles in, it's time for all of us to start thinking about how to ensure the well-being of our dogs, both on and off the trial field. Heat stress can cause lots of different problems for dogs, ranging from a lack of mental acuity to death. But with a little common sense and forethought, our dogs can continue to do the work they love — and that we need them to do — right through the summer.

Just as with humans, summer heat can take a toll on both the body and mind of a working dog. It's important to use good common sense, have the dog conditioned to heat, in good physical shape, healthy, and hydrated before you work on a hot summer's day.

Remember that dogs are essentially air-cooled. They can't reduce their body temperature by sweating the way we do. They rely on cooler air moving over their body and through their lungs, particularly as it crosses their tongues. As the air

temperature approaches their body temperature (101 degrees or so) they cannot cool themselves by panting. They must get wet or find a cool spot to dissipate their body heat. This is one reason why dogs like to dig holes and lie in them in the summer. The soil just a few inches below the surface of the earth can be as much as 10 degrees cooler than the air.

## Common sense measures

Pay attention to heat, humidity, and air movement. Very warm air won't cool your dog as well as cooler air. Moving air provides better cooling than still air, and dry air cools better than humid air. Also bear in mind that black coats heat up in the sun very quickly. If it's 75 degrees, still, and humid with full sun, a black dog in an open field can heat up very quickly even though the thermometer tells us the temperature is moderate.

If there are air quality warnings for your area, take heed of them also. As air quality diminishes, your dog will have a harder time oxygenating his blood to keep his muscles and brain working right.

If you're out on a hot day, don't leave your dogs in the car or truck. Chain or crate them in the shade with access to clean drinking water, and check them regularly to make that they are still in the shade, and still have water. Putting an ice cube or two in their water can also help keep their body temperatures a bit lower.

On hot days, restrict your training sessions to early morning and evening, when temperatures are cooler. Keep training fun and keep the mental pressure lower on the hottest days, or skip training altogether. If you have farm work that needs to be done, do it during the cool hours — it's easier on the stock, the dogs, and you.

Watch for signs of heat stress and quit before they reach dangerous levels. Every dog will show different signs, so you need to watch for things that are abnormal for your particular dog. Some common ones are a reduction in desire to work, sniffing the ground or eating grass and "smart pills" even though the work isn't that hard. A sharp curl at the end of the dog's tongue can also indicate mental stress. If the dog is panting hard enough that it interferes with his breathing, that's another sign that you need to let him cool off for a bit. In short, if your dog seems a bit "off," it's time to wind things down.

If your dog is staggering, you've got an emergency on your hands. Pick him up and carry him to cool water as quickly as possible and submerge him to lower his body temperature. It's most important to get his belly and legs into the water, since major veins and arteries are fairly close to the surface there, and the water will help dissipate heat from the dog's blood. Serious brain damage or

death can follow extreme overheating.

Remember that these dogs are extremely stoic and focused on their work, often to their own detriment. Many will work until they drop. You have to take the responsibility for their welfare, because they will not stop unless you tell them to.

### Conditioning

Dogs have a remarkable ability to acclimate to broad ranges of temperatures and humidity. If your dog lives in the air-conditioned house with you, it will be that much more difficult for him to work in the heat, simply because his body is accustomed to a lower temperature and humidity level. Consider kenneling him in the garage or barn, or under shady trees, where he can get used to outdoor temperatures without being baked by the sun. Make any change in his environment gradually — a few hours a day at the most. Gradually increase exercise periods until your dog is capable of a full workout in moderately warm temperatures.

While it's important to keep your dog from overheating, you can also build up his ability to cool himself through gradual conditioning, so it's not a great idea to hose your dog down as soon as he pants. Under normal or moderate conditions, let him cool down on his own. In the long run, this will help him stay cooler longer when he's working, and will serve both you and your dog better.

### Physical shape

Overweight dogs suffer more in the heat than lean ones. Keep your dogs trim and fit, particularly in the summer. That means the dog should carry virtually no subcutaneous fat. Individual ribs should be easy to feel, but not sharp. Your dog's heart and lungs should be healthy, and their strength should be built up gradually using non-working exercise such as running and walking.

### Other health considerations

Some Border collies suffer from a medical condition called malignant hyperthermia, also known as "the wobbles" or "Border collie staggers." These dogs seem unable to dissipate heat. If your dog is unsteady on his feet, or seems to overheat rapidly or with little exertion, you should not work him until you've consulted with a knowledgeable veterinarian.

Dogs dissipate heat by increasing the rate of blood flow and pushing blood outward to the tongue, legs, and feet, where there are lots of blood vessels close to the surface. The heart pumps blood faster when the dog is hot, and the spleen releases additional blood into the circulatory system to provide more circulating blood to dissipate the heat. If your dog's heart or spleen is

defective or unhealthy, he won't be able to cool himself effectively.

If your dog seems to be the first one to quit, or has an especially hard time in hot weather, don't push it. Seek advice from your veterinarian.

### Hydration

Dogs drink when they're thirsty, but they will not drink enough in advance of working to avoid dehydration. In the heat, everything that you can do to increase the amount of water a dog has in its system when it's working will reduce the likelihood of heat stress. This means both putting more water in and making sure that you don't require the dog to use any more water in its digestive process than necessary.

Most high-quality kibble has relatively low amounts of soluble fiber, but they all have some. This fiber draws water from the dog's digestive tract as it rehydrates. If you moisten the kibble gradually before feeding time so that the food is the consistency of oatmeal, the dog should not lose any water in the process of digesting the kibble.

Push fluids to your dog before you start working. Most dogs will readily drink two cups of water if you put a quarter cup of milk in it. If you do this two hours before work, your dog will have had time to assimilate the water and flush his kidneys, which will leave him better able to deal with the toxins that are released during exercise. Moreover, when his metabolic rate increases, he will have better reserves of water to keep the process going, providing the energy he needs to pump blood to his muscles, and to keep himself cool.

### Cooling down

Most sheepdog trials provide a cooling tub at the end of the course. The idea is to give the dog a chance to lie down in some water. This dissipates the heat in their bloodstream faster than their tongues and pads could do it otherwise. When the dog gets out of the water, evaporative cooling continues the process.

If you work near streams, ponds, or lakes, your dog will probably be drawn to the water when he gets warm. The danger of letting him get into the habit of using a natural body of water to cool off is that you might not always know if the water at a trial site is safe. Use common sense and good judgment, and make sure you provide a cooling tub if you aren't going to let your dog jump in the stream after a hard workout.

— Bill Fosher





# Spring Fling Fun Trial

## Hop Bottom, PA, April 15 & 16

The "Spring Fling" Fun Trial was held on April 15 & 16, 2000, at Walt Jagger's Sheepy Hollow Farm in Hop Bottom, Pennsylvania. As this was a "fun trial," there was no sanctioning, and therefore no points or penalties for running in any class.

The fun trial was a huge success, with a great turnout of folks who wanted to shake out the win-

ter rust and get in some valuable pre-season practice runs. Contrary to the weather forecast, we were graced with beautiful springtime weather both days. Cheryl Jagger-Williams, Richard Williams and Walt Jagger shared the judging duties. Many thanks to Cheryl, Dick and Walt for their hospitality in hosting yet another wonderful event.

### Saturday

#### Novice-Novice 16 dogs ran

1. Sue Asten, Duff, 76
2. Lori Cunningham, Nick, 68
3. Sue Asten, Glen, 64
4. Roger Baker, Grace, 60
5. Carolyn Lash, Bess, 58
6. Kim Baker, Becky, 55
7. Heide Elliott, Don, 54
8. Jim Murphy, Duke, 42
9. Sandy Sanderson, Lass, 41
10. Rob Drummond, Spy, 28

#### Pro-Novice 26 dogs ran

1. Joyce Geier, Tait, 73
2. Annie Palmer Fleet, 71
3. Andrea de Kenedy, Kep, 67
4. Lori Cunningham, Tess, 67
5. Roger Millen, Roy, 66
6. Joyce Geier, Rio, 65
7. Joan Worthington, Tess, 63
8. Andrea de Kenedy, Hobbes, 61
9. Mark Billadeau, Dot, 57
10. Steve Paxton-Hill, Nip, 56

#### Ranch 11 dogs ran

1. Joan Worthington, Tess, 72
2. Andrea de Kenedy, Kip, 64
3. Louise DiMarcello, Sally, 57

4. Sherry Smith, Jess, 54
5. Barb Starkey, Jordan, 48
6. Louise DiMarcello, Moss, 43
7. Andrea de Kenedy, Hobbes, 36
8. Linda Fossetta, Lizzy, 34
9. Chris Krommelbein, Mary, 29

#### Open 20 dogs ran

1. Nancy Ortiz-Sharp, Vega, 81
2. Suzanne Craddock, 77
3. Sally Lacy, Bob, 76
4. Chris Krommelbein, Tess, 73
5. Nancy Ortiz-Sharp, Aquilla, 72
6. Sally Lacy, Tru, 67
7. Sherry Smith, Mick, 67
8. Roger Millen, Tripp, 61
9. Peter VandeCar, Spot, 55
10. Heather Millen, Buck, 51

### Sunday

#### Novice-Novice 14 dogs ran

1. Linda Hotchkiss, Kopper, 71
  2. Linda Hotchkiss, Jane, 70
  3. Carolyn Lash, 68
  4. Jim Murphy, Duke, 64
  5. Sandy Sanderson, Lass, 62
- Pro-Novice  
21 dogs ran
1. Roger Millen, Roy, 84

2. Steve Paxton-Hill, Nip, 77
3. Joyce Geier, Tait, 74
4. Andrea de Kenedy, Kep, 72
5. Andrea de Kenedy, Hobbes, 69
6. Steve Paxton-Hill, Cai, 66
7. Dave Sharp, Rigel, 66
8. Annie Palmer, Fleet, 61
9. Heide Elliott, Don, 61
10. Barb Starkey, Gail, 61

#### Ranch 11 dogs ran

1. Elizabeth Phillips, Queen, 75
2. Louise DiMarcello, Sally, 72
3. Louise DiMarcello, Moss, 70
4. Andrea de Kenedy, Hobbes, 56
5. Sherry Smith, Jess, 50
6. Andrea de Kenedy, Kep, 42
7. Chris Krommelbein, Mary, 38

#### Open 18 dogs ran

1. Sally Lacy, Bob, 90
2. Joyce Geier, Troy, 83
3. Barbara Klein, Glen, 83
4. Chris Krommelbein, Tess, 80
5. Melissa DeMille, Beebe, 79
6. Heather Millen, Buck, 78
7. Sally Lacy, Tru, 77
8. Elizabeth Phillips, Kate, 76
9. Merry Klimek, Jeep, 75
10. Suzanne Craddock, Ellie, 68

## New Hampshire Sheep and Wool Festival Trial

### Sunapee, NH, May 13 & 14

The New Hampshire Sheep and Wool Festival Dog Trial was run at Mount Sunapee in Newbury, NH, on the ski trail in front of Spruce Lodge. The Novice Fun Run classes (not NEBCA sanctioned and therefore were used as training runs) were judged by Michael Dathe on Saturday and Steve Wetmore on Sunday. Dee Woessner judged the Open Points trial both days.

Roger Deschambeault's horned dorsets were used to run the course. The weather Saturday was damp and cool and Sunday was bright and sunny. The course was a challenge to both dogs and sheep

because of the terrain.

Thanks to Jean and Joe Kennedy, Bruce Smart, and Lynn Deschambeault for providing excellent commentary to the public. Over 1,000 people attended the festival and watched the dog trial on Sunday alone. Sarah Wenz, Bud and Sarah Ames handled the set out with occasional help from willing handlers. Betty Murray took charge of the paperwork, recording, and scorework both days so everything ran very smoothly. Thank you to all who helped make this trial a success.

— Mary Ames, trial manager.

### Saturday

#### Open Points 20 dogs ran

1. Roger Deschambeault and Joe
2. Bruce Smart and Dolly
3. Lynn Deschambeault and Jolly
4. Greg Hamm and Gaelen
5. Ed Hobart and Joy
6. Bud Ames and Sam
7. Steve Wetmore and Moss
8. George Northrup and Kip
9. Steve Wetmore and Keegan
10. Bud Ames and Luke

The top 6 finishers of the **Pro-Novice** type course were: Kate Collins, Greg Hamm, Dee Woessner, Carlene

Eitapence, Lana Pettet and Steve Wetmore.

The top 6 finishers of the **Ranch** type course were: Steve Wetmore, Gabe Merrill, Dee Woessner, Carlene Eitapence, Cokie Hamm and Roger Deschambeault.

### Sunday

#### Open Points 16 dogs ran

1. Michael Dathe and Cobb
2. Bruce Smart and Peg
3. Bud Ames and Luke
4. Gabe Merrill and Meg
5. Lynn Deschambeault and Pip
6. Greg Hamm and Gaelen

7. Justin Elwell and Ben
8. Steve Wetmore and Keegan
9. Jean Kennedy and Max
10. Lynn Deschambeault and Jolly

The top 6 finishers of the **Pro-Novice** type course were: Roger Deschambeault, Carlene Eitapence, Carlene Eitapence, Michael Dathe, Dee Woessner, and Roger Deschambeault

The top 6 finishers of the **Ranch** type course were: Roger Deschambeault, Gabe Merrill, Carlene Eitapence, Greg Hamm, Cokie Hamm, and Michael Dathe.



# Springton Manor Farm

## SDT • Glenmore, PA,

### April 29 & 30

Judge: Dr. Ben Ousley

Challenging, hardly dogged crossbreds supplied by Sharon Nunan and Ron McGettigan gave Ranch and Open handlers quite a challenge at the Sixth Annual Springton Manor Farm SDT. Many of the sheep had never seen the inside of a trial pen, therefore making the completion of the pen quite a feat. Saturday's Open course was straightforward, using four sheep, and a split instead of a shed. Sunday's Open course, however, was not for the faint-hearted! During the cross-drive, a pull-through at the center gate was required for an additional 10 points. From there, the course continued across to the cross drive gates, then directly to the pen, with no shed. Except for a bit of wind on Sunday, the weather was beautiful the entire weekend.

Of special note, we're very proud of our Novice-Novice overall champions Sue and her Duff, who was one of our rescue dogs! Many thanks to R.C. Gilbert for donating handmade trophies for the overall champions in each class and to Kathryn Paxton-Hill for her beautiful



original hand-painted plate which went to Linda Tesdahl's Peg as the "Most Promising Young Dog." Also thanks to Sue Asten, Tina DeAngelo, Ed Moore, Liz Phillips, Barb & Bernie Armata, Barbara Levinson, Dave Sharp, Mark Billedeau, Joan Worthington, and Allan & Peg Lynch for helping this trial run like clockwork. Plus, a huge thanks to Ben and Emily Ousley.

*Dick Williams at the pen  
at the Springton Manor  
Trial*

## Saturday

### Novice-Novice

23 dogs ran

1. Gina Morris, Kit, 72
2. Sue Asten, Duff, 72
3. Sue Asten, Glen, 67
4. John Sanderson, Glenn, 66
5. Debbie Collison, Kip, 65
6. Kim Baker, Becky, 64
7. Deb Mickey, Jill, 61
8. Michelle Higgins, Kilt, 60
9. Deb Kramer, Tal, 54
10. Renee Billadeau, Starr, 54

### Pro-Novice

24 dogs ran

1. Renee Billadeau, Moss, 74
2. Walt Jagger, Maid, 73
3. Mary Brighoff, Jim, 73
4. Michelle Higgins, Ace, 72
5. Barbara Starkey, Gael, 72
6. Dave Sharp, Rigel, 70
7. Janet Harvey, Liza, 70
8. Richard Rogers, Jill, 70
9. Steve Paxton-Hill, Cai, 68
10. Sandy Hornung, Meg, 67

### Ranch

18 dogs ran

1. Linda Tesdahl, Peg, 77
2. Dick Williams, Dot, 68
3. Walt Jagger, Queen, 68
4. Janet Harvey, Raine, 67
5. Allan Lynch, Sage, 66
6. Barbara Starkey, Hope, 63
7. Eileen Stein, Floss, 63
8. Susanne Craddock, Mick, 61
9. Peg Lynch, Jill, 61
10. Eunice Morgan, Sidekick, 67

### Open

30 dogs ran

1. Mary Brighoff, Val, 86
2. Linda Tesdahl, Jayce, 85.5
3. Barbara Armata, Taff, 85
4. Merry Klimek, Jeep, 81
5. Barbara Armata, Anne, 80
6. Barbara Levinson, Ivy, 79
7. Cheryl Williams, Andy, 77
8. Dick Williams, Nell, 77
9. Susanne Craddock, Elli, 76
10. Mary Brighoff, Mirk, 76

## Sunday

### Novice-Novice

20 dogs ran

1. Lori Cunningham, Tess, 76
2. John Sanderson, Glenn, 75
3. Deb Kramer, Tal, 73
4. Sue Asten, Duff, 70
5. Roger Baker, Beth, 63
6. Debbie David, Tyler, 62
7. Debbie Collison, Kip, 59
8. Carolyn Lash, Bess, 59
9. Gina Morris, Taff, 59
10. Renee Billadeau, Starr, 59

### Pro-Novice

23 dogs ran

1. Joan Worthington, Tess, 78
2. Mary Brighoff, Jim, 75
3. Mike McGowan, Sassy, 74
4. Walt Jagger, Maid, 74
5. Sandy Hornung, Meg, 73
6. Dave Sharp, Rigel, 73
7. Barbara Armata, Jen, 73
8. Barbara Starkey, Gael, 69
9. Eunice Morgan, Peggy, 64
10. Renee Billadeau, Moss, 64

### Ranch

17 dogs ran

1. Linda Tesdahl, Peg, 86
2. Barbara Starkey, Jordan, 83
3. Dick Williams, Dot, 81
4. Barbara Starkey, Hope, 80
5. Susanne Craddock, Mick, 79
6. Louise DiMarcello, Moss, 79
7. Liz Phillips, Queen, 78
8. Janet Harvey, Raine, 77
9. Sandy Hornung, Jet, 76
10. Peg Lynch, Jill, 74

### Open

29 dogs ran

1. Mary Brighoff, Val, 93
2. Nancy Ortiz-Sharp, Acquilla, 91
3. Walt Jagger, Nan, 89
4. Allan Lynch, Duff, 89
5. Cheryl Williams, Sadie, 88
6. Jim Strohecker, Ring, 86
7. Jim Strohecker, Rudy, 81
8. Dick Williams, Nell, 80
9. Mary Brighoff, Mirk, 79
10. Barbara Klein, Glen, 78

## Two-day champions

**Novice-Novice:** Sue Asten, Duff

**Pro-Novice:** Mary Brighoff, Jim

**Ranch:** Linda Tesdahl, Peg

# Connecticut Sheepbreeders Sheep Dog Trial

Tolland Ag. Center, Tolland, CT, April 29 & 30

Judge Lawrence Campion

This, one of the oldest trials in the USA, is the season opener for the Northeast. It is sponsored by the Connecticut Sheepbreeders Association and held on the grounds of the Tolland Ag Center in Tolland, CT.

The sheep run were wool sheep — Border Leicester/Cheviot crosses owned by Bittersweet Farm. These are the notoriously challenging Bittersweet Trial sheep and they held up their reputation. They are quite manageable if the dog is correct, but are quick to show up any flaw in the dog or handling. The field was quite large, but as usual, the exhaust posed the greatest pressure.

Our judge this year, Larry Campion, was fair but tough. He demanded that the sheep be shed on the head and the dog in control. By far, this was the biggest challenge of the weekend with very few good sheds being accomplished. There was some very good dog work done and those in the placings deserve a lot of credit.

Many thanks as usual are in order for this event. Special thanks to Sylvia Murray for her work in re-establishing this trial. It was successful, drawing many spectators for both the sheepbreeders and the handlers. Many handlers pitched in to help spot sheep, exhaust, etc. Thanks to all of you.

## Saturday

### Novice-Novice

17 dogs ran

1. Greg Hamm, Maya
2. Cokie Hamm, Lola
3. Molly King, Ruby
4. Ivor Johnson, McDuff
5. Cheryl Burr, Tess

### Pro-Novice

26 dogs ran

1. Bev Lambert, Kirk
2. Roger Millen, Roy
3. Denise Leonard, Rose
4. Betty Levin, Folly
5. Sue Schoen, Claire

### Ranch

9 dogs ran

1. Rich Seaman, Zoe
2. Bev Lambert, Kit
3. Becky Peterson, Taff
4. Greg Hamm, Gaelen
5. Joanne Krause, Hope

### USBCHA Nursery

9 dogs ran

- Bev Lambert, Kit  
Bev Lambert, Kirk

## Sunday

### Open

34 dogs ran

1. Bev Lambert, Nell
2. Rich Seaman, Cleo
3. Bud Ames, Sam
4. Ed Hobart, Joy

5. Ellen Skillings, Paige

6. Denise Leonard, Kate

7. Bev Lambert, Pippa

8. Carol Campion, Roy

9. Maria Mick, Ben

10. Steve Wetmore, Keegan

### Open

33 dogs ran

1. Ellen Skillings, Jack

2. Ed Hobart, Joy

3. Ellen Skillings, Paige

4. Warren Mick, Reggie

5. Maria Mick, Ben

6. Bev Lambert, Nell

7. Steve Wetmore, Keegan

8. Steve Wetmore, Moss

9. Rich Seaman, Cleo

10. Bev Lambert, Pippa

## Help keep us current!

Calling all trial managers! Please remember to send results of your trials as soon as you possibly can to both Bill Foshier for inclusion in the newsletter, and Heather Millen so that the various NEBCA points standards can be kept up to date.

For the newsletter, we like to see a short write-up about the trial conditions, the sheep, the weather, and the fun. If special awards are given (such as overall champions, or a judge's choice for best young dog, etc.) please be sure to include them. Thank any sponsors and volunteers.

The results for the newsletter should be broken down by day and by class. Please include the handler's name (full name please — you may think everyone knows who Joe R. is, but we might not!), dog's name, and score for up to 10 places. If there are ties, please say how the judge broke them.

Heather's needs are different. She needs to know the handler and dog names for all dogs in the Novice classes that score more than 50 points, regardless of where they place in the trial.

It's particularly important to get scores to Heather quickly so that Novice handlers know when they're approaching the limit of 40 points in a class and will be required to move up to the next class.

Thanks for your help.

Those of you with Internet access can send trial results for the newsletter to [bill@lucky-dogdesign.com](mailto:bill@lucky-dogdesign.com), and for the points tallies to [rpm1@cornell.edu](mailto:rpm1@cornell.edu). Bill's address is 14 Village Road, Surry, N.H. 03431. Heather's is 1049 Babcock Hollow Road, Cortland, N.Y. 13045



# Massachusetts Sheep and Wool Festival

## SDT • Cummington, MA, May 27 & 28

Trial managers:

Becky & Hoop Peterson

Judge:

Bruce Smart, Hudson, QC, Canada

Well, the forecast called for rain and we were anticipating tall grass to run in. It all proved to be wrong. The sun finally came out Friday morning and field owner Ken Howes arrived on his tractor about 2 p.m. He mowed the grass and left it in windrows with no way to dry it, let alone chop it or bale it before the trial due to all of the rain the previous five days.

The windrows left the field looking like a 40-lane highway with green dividers, high in some cases. This made the field very challenging for many dogs. The sheep, provided by Allan and Peg Lynch, were content to follow their "lanes," not realizing that straight lines mattered. It took a fair amount of handling and a

lucky break or two to have a successful run. Bruce Smart of Hudson, Quebec, ably judged the Open class and all of the Nursery classes. Many, many thanks go to all of those kind people who helped to keep the days running smoothly. There is a long list of sheep chute loaders, sheep holder-outers, exhaust gate holders, score runners, fence rollers, smilers and back patters. Special thanks go to Betty Murray who came unasked to manage the paperwork for two days. The trial would have been a great burden without all of you folks.

The fair itself enjoyed the attendance of about 3,500 people, 60 vendors, 300 sheep, many crafters, spinners, weavers, dyers and numerous volunteers, not to mention the surprisingly good weather. We'll see you all next year on Memorial Day weekend in Cummington.



## Saturday

### Novice-Novice

25 dogs ran

1. Bill Haines, Scot, 68
2. Bill Foshier, Molly, 67
3. Molly King, Ruby, 66
4. Rolf T. Knight, Jewel, 61
5. Gail Jaffa, Trace, 60
6. Cokie Hamm, Lola, 60
7. Shelley Wurst, Summer, 50
8. Janet Lindsey, Kelly, 47
9. Maarten Walter, Chaps, 47
10. Peg Lynch, Cricket, 43

### Pro-Novice

32 dogs ran

1. Beverly Lambert, Kirk, 68
2. Sue Schoen, Claire, 68
3. Peter VandeCar, Bud, 63

4. Amy Dunnington, Scout, 52
5. Paul Heidenberg, Jodi, 51
6. Barbara Armata, Jazz, 51
7. Betty Levin, Folly, 49
8. Michael Dathe, Cooper, 48
9. Susan Myshka, Queen, 47
10. Kathi Hughes, Chloe, 47

### Ranch

19 dogs ran

1. Beverly Lambert, Kit, 59
2. Becky Peterson, Taff, 53
3. Becky Peterson, Libby, 52
4. Elizabeth Phillips, Queen, 52
5. Lin Reuther, Nap, 47
6. Carlene Eitapence, Floss, 46
7. Kathi Hughes, Isabella, 45
8. Carlene Eitapence, Lass, 44
9. Peg Lynch, Jill, 44
10. Peg Lynch, Ralph, 41

## Sunday

### Open

43 dogs ran

1. Ellen Skillings, Jack, 88
2. Denise Leonard, Kate, 88
3. Beverly Lambert, Nel, 84
4. Allan Lynch, McDuff, 83
5. Warren Mick, Reggie, 82
6. Rich Seamans, Socks, 81
7. Steve Wetmore, Keegan, 79
8. Denise Leonard, Meg, 79
9. Ed Hobart, Joy, 77
10. Maria Mick, Ben, 77
11. Barbara Leverett, Queen, 77

*Massachusetts Sheep & Wool Festival Open winners Ellen Skillings and Jack*

# BORDER COLLIE RESCUE SERVICES

**Patty Allison**

(ME, VT, NH, MA, CT, NY)

RR 1, Box 665

Harrison, ME 04040

(207) 583-2353

**Nancy Cox Starkey**

(MD)

12985 Colonial Drive

Mt. Airy, MD 21771

(301) 253-4732

# Hancock Shaker Village

## Border Collie Trial • May 13 & 14



Judge: Larry Campion  
 Trial Manager: Eric Johnson  
 Hancock Shaker Village once again sponsored a sheepdog trial as part of their opening weekend events. Novice classes ran on Saturday under the threat of rain, which never materialized. Open ran on Sunday. Pat Canaday's Dorset flock worked well in their first outing of the year. Judge Larry Campion did a great job of sorting things out.

*Barb Armata & Annie  
 on the drive under the  
 judge's watchful eye*

### Saturday

#### Novice-Novice

19 dogs ran

1. Gail Jaffa, Slew, 65
2. Janet Lindsey, Kelly, 64
3. Gail Jaffa, Trace, 61
4. Cheryl Burr, Tess, 57
5. Linda Hotchkiss, Jayne, 56
6. Bill Fosher, Molly, 46
7. Rob Drummond, Spy, 45
8. Sue Schoen, Kip, 45
9. Carolyn Smiles, Faye, 41
10. Kim VanDerWend, Sian, 36

#### Pro-Novice

22 dogs ran

1. Kathi Hughes, Chloe, 74
2. Serina Torrey, Spin, 73

3. Bernie Armata, Briar, 72
4. Bev Lambert, Rue, 70
5. Bev Lambert, Kirk, 70
6. Peter VanDeCar, Bud, 69
7. Bernie Armata, Susie, 68
8. Warren Mick, Glen, 66
9. Barbara Armata, Jen, 65
10. Melissa DeMille, Stella, 63

#### Ranch

11 dogs ran

1. Bev Lambert, Kit, 81
2. Denise Leonard, Rose, 76
3. Chris Krommelbein, Mary, 74
4. Kathi Hughes, Isabella, 58
5. Sue Schoen, Jet, 58

### USBCA Nursery

5 dogs ran

1. Rich Seaman, Zoe

### Sunday

#### Open

36 dogs ran

1. Warren Mick, Tim, 92
2. Bev Lambert, Pippa, 90
3. Ellen Skillings, Paige, 88
4. Sally Lacy, Tru, 87
5. Warren Mick, Reggie, 86
6. Rich Seaman, Zoe, 84
7. Barbara Armata, Annie, 84
8. Chris Krommelbein, Tess, 80
9. Bev Lambert, Nel, 79
10. Sally Lacy, Chess, 79

If you do Border Collie Rescue or wish to, please join the  
**North American Border Collie Rescue Network  
 (NABCRN).**

As our name implies, we are a resource network and nationwide (US and Canada) support system for Border Collie Rescue people. We operate without profit and are independent of any breed organizations.

For information, the **NABCRN** List, or to be listed, please phone or write:

**NABCRN, Box 843,  
 Ithaca, NY 14851 USA  
 (607) 659-5868**



# Nearfield Farm Trials

Conway, NH, May 20 & 21

Saturday was a great day. Seasonally warm, with sun and very few black flies. So it was about as good as it gets! Sunday was a gray day but the rain held off until the trial was over ~ the Guy upstairs was looking out for us! Again, thanks to all who helped this weekend. Volunteers are what makes a trial work. Roger Deschambault was the trial manager.



## Saturday

Judge: Dave Young

### Novice-Novice

9 dogs ran

1. Rolf Knight, Jewel, 62
2. Brenda Buja, Page, 51
3. Darlene Hutchins, Zack, 49
4. Polly Goodwin, Pearl, 49
5. Carroll Goodwin, Bama, 49

### Pro-Novice

14 dogs ran

1. Brenda Buja, Dice, 74
2. Roger Deschambault, Fly, 72
3. Mary Ellen Young, Spot, 70
4. Roger Deschambault, Craig, 70
5. Steve Wetmore, Gyp, 62
6. Betty Levin, Folly, 61
7. Clint Brake, Callum, 59
8. Michael Dathe, Cooper, 59
9. George Northrop, Moss, 56
10. Carlene Eitipence, Anna, 47

### Ranch

8 dogs ran

1. Carlene Eitipence, Floss, 72
2. Dee Woessner, Joy, 70
3. Sue Schoen, Jet, 67
4. Roger Deschambault, Craig, 66
5. Gabe Merrill, Sue, 57

### USBCHA Nursery

6 dogs ran

1. Betty Levin, Folly, 77
2. Roger Deschambault, Craig, 61
3. Michael Dathe, Cooper, 47

## Open

15 dogs ran

1. Roger Deschambault, Joe, 83
2. Rich Seaman, Cleo, 82
3. Michael Dathe, Cobb, 80
4. Ed Hobart, Joy, 75
5. Betty Levin, Maddie, 70
6. Steve Wetmore, Moss, 69
7. Sue Schoen, Jet, 68
8. Steve Wetmore, Keegan, 67
9. Bud Ames, Sam, 64
10. George Northrop, Kyp, 63
11. Gabe Merrill, Abbie, 62

## Sunday

Judge: Steve Wetmore (Dave Young for Novice Classes)

### Novice-Novice

11 dogs ran

1. Carrol Goodwin, Bama, 56
2. Polly Goodwin, Pearl, 50
3. Clint Brake, June, 48
4. Darlene Hutchins, Zack, 42
5. Rolf Knight, Jewel, 39

### Pro-Novice

16 dogs ran

1. Betty Levin, Folly, 71
2. Steve Wetmore, Gyp, 70
3. Brenda Buja, Dice, 69
4. Mary Ellen Young, Spot, 64
5. Michael Dathe, Cooper, 56
6. Clint Brake, Callum, 55
7. Lynn Deschambault, Di, 47
8. Carlene Eitipence, Anna, 46
9. Dee Woessner, Neep, 38

## Ranch

7 dogs ran

1. Roger Deschambault, Craig, 66
2. Carlene Eitipence, Floss, 53
3. Carlene Eitipence, Lass, 39
4. Millie Curtis, Robbie, 30

### USBCHA Nursery

6 dogs ran

1. Betty Levin, Folly, 64
2. Roger Deschambault, Craig, 64
3. Michael Dathe, Cooper, 33

## Open

17 dogs ran

1. Gabe Merrill, Meg, 78
2. Sue Schoen, Jet, 73
3. Bud Ames, Sam, 73
4. George Northrup, Kyp, 73
5. Michael Dathe, Cobb, 72
6. Ed Hobart, Joy, 70
7. Dave Young, Streak, 68
8. Betty Levin, Maddie, 67
9. Rich Seamans, Cleo, 67
10. Roger Deschambault, Joe, 67

*Albert Cowgill and Moss  
on the wear at Nearfield  
Farm*



# Minutes from NEBCA Meeting

## May 27, 2000 Meeting held at Cummington Trial

Vice President, Denise Leonard, called the meeting to order. There were 26 members present.

1. The minutes from the annual meeting as published in the spring newsletter were approved.
2. Treasurer Joanne Krause noted that there is currently \$5197.28 in the checking account. Pending bills include: 2000 calendars, NEBCA brochures, and mugs. The financial audit for 1999 was completed by Doug McDonough and everything is in order.
3. The secretary noted that there are currently 240 members paid for 2000.
4. Denise Leonard gave an update on the work to incorporate NEBCA. The corporation NEBCA, Inc. was officially recognized by the state of Massachusetts. The final step in the process is to vote to dissolve the current organization. A ballot for this vote will be mailed out in the next few weeks.
5. Carol Campion gave the Open Trial Committee

report. The Fall Foliage Trial will be held on Oct. 7 & 8 in Old Chatham. Ray Edwards will again be the Judge. Carol noted that the committee will be considering a substantial revision to the open trial rules in the upcoming year. Anyone with comments in this regard should contact Carol.

6. George Northrup gave the Novice Trial Committee report. He stated the novice finals will be held on Sept. 16&17. Bernie and Barbara Armata's farm is a likely site.

7. Clint Brake discussed the status of a perpetual trophy honoring Alex McKinven that he is trying to establish. The trophy would go to the novice handler/dog with the highest combined score in the pro-novice class at the Novice Finals. Clint will work with the Novice Trial committee to sort out the details.

8. The next meeting will be held at the Bittersweet trial on July 2.

The meeting was adjourned in time for dinner.

— Warren Mick

## Animal Health Guidelines

The following is the product of the Board of Directors and was produced in conjunction with the majority vote of the members present at the NEBCA annual meeting, Jan. 15, 2000. Given the high visibility that our sport is currently experiencing, it was appropriate and prudent for both the protection of the organization (including its volunteer executive committee and board members) and for all animals involved, that an official statement of commitment be put in writing to that end. It is to be noted that in no way is this an intention to dictate the on-farm management of sheep and dogs. These guidelines are also not intended to be attached to the sanctioning of trials. We strongly feel that these guidelines will in no way infringe on the freedoms and rights of any of our members or trials managers, yet will serve to promote an atmosphere of concern and awareness on this issue. We would like to thank everyone for his/her input on the matter and wish all a challenging and enjoyable trial season in 2000!

### NEBCA Animal Health Guidelines

NEBCA has a responsibility toward the treatment of dogs and stock used in NEBCA sanctioned trials. Every effort should be made to promote the humane care and handling of such while used in trials. The following is the official position of NEBCA concerning the health and use of dogs and livestock at NEBCA sanctioned trials and events.

#### SHEEP "Healthy sheep run well"

1. All sheep run should be sound, suitable and fit.
2. Caution and care should be exercised when running ewes that are visibly heavy with lambs or that

are heavy with milk.

3. Sheep should not have more than a 12 month fleece on them when running in trials (especially if they are running in a trial where hot weather is likely or heavy rain).

4. Water should be provided in both the holding and exhaust pens. Shade should be provided if needed.

5. Provisions should be made for adequate nutrition.

6. A safe area should be in place to protect the sheep.

7. A veterinarian should be reasonably available.

8. A handler will be responsible to any damage to the sheep.

#### DOGS

9. Mistreatment of a dog or stock on the trial field or grounds is prohibited at NEBCA sanctioned trials.

10. Handlers are expected to use common sense and good judgment when running pregnant or lactating bitches, older dogs, or dogs with medical problems.

11. Trial managers are encouraged to disallow the sale and/or display of puppies.

#### GENERAL

12. Consideration and good judgment should be exercised relating to any extremes in weather conditions at all events.

13. Owners and handlers must, at all times, be aware of the image they are conveying to the general public when interacting with their dogs.

Concerns regarding the treatment of animals at a NEBCA sanctioned event should first be brought to the attention of the person in charge of the event. If the issue cannot be resolved, the Trials Committee and Board of Directors should be consulted.



## Past Meeting minutes

*Editor's note: The following minutes are from meetings that took place in the 1999 season. They have been accepted and approved, and are printed here for historical purposes only.*

### Minutes from May 29, 1999 Meeting

Meeting held at Cummington Fairgrounds, MA

The Meeting was called to order by President Cheryl Jagger Williams at 5:30 p.m.

Number of members present: 34

The meeting minutes from the annual meeting as printed in the Spring Newsletter were approved.

The results of the Special Election for the open Board of Director Position were given:

Allen Lynch received 9 votes, Beck Peterson 26 votes, and Lynn Deschambeault 1 vote. Cheryl announced that Becky was elected to the Board.

Barbara Leverett, Chair of the BOD, discussed the Board's work researching the validity of the Maryland motion that was passed at the annual meeting. She moved that the rewording of the motion, as printed in the Summer Newsletter, be accepted. The motion was passed.

Denise Leonard, VP, reported on the work to incorporate NEBCA as a step toward achieving non-profit status. A lawyer has reviewed the current bylaws and indicated substantial rewording would be required before they would be acceptable. Work is continuing on this issue.

Cheryl read the revised mission statement worked on by Eve Marschark. Cheryl noted the statement would be printed in the next newsletter for a vote at a meeting later this year.

The Secretary noted the membership was currently at 310.

Joanne Krause gave the treasurer's report, the current balance as of 5/29/99 was 3711.44.

Clint Brake gave the Calendar report. There is still approximately \$800 outstanding on 1999 calendars that were distributed. The year 2000 calendars are now available.

Beverly Lambert gave the Trial Committee report. The Fall Foliage trial will be held on October 9 and 10, in Old Chatham NY. A judge for the trial has not yet been selected.

The committee had reviewed the current rule that required no NEBCA members be turned away from a NEBCA trial prior to an entry deadline and decided there was no need to change it.

In response to both recent and past events, Beverly motioned the addition of the following rule to the open trial guidelines. [The sheep used in trials must be fit and of a suitable type]. This motion passed.

Clint Brake gave a cost estimate for printing NEBCA brochures. A motion to print 5000 brochures for \$625 was passed. Clint requested help in reviewing the content of the brochure prior to printing.

Barbara Leverett reported for the committee formed at the annual meeting to formulate a policy to specifical-

ly address the welfare of dogs and livestock. She gave examples of the different types of policies other organizations have and what options exist. Much lively discussion followed. The committee will continue working on the issue.

Joanne reported on the result of the financial audit done by Doug McDonough. A few small discrepancies were found and corrected.

George Northrop gave the Novice Committee Report. He noted that Carol Campion had graciously offered her field and sheep for the Novice finals. The two weekends currently under consideration for the event are 9/11-12 and 9/18-19.

The meeting was adjourned at 6:30 PM

— Warren Mick, Secretary

### Minutes from NEBCA Meeting on October 9, 1999

Meeting held at the Fall Foliage Trial  
in Old Chatham NY

The President, Cheryl Jagger Williams, called the meeting to order at 6:30 PM. There were only 23 members present so the quorum requirement of 25 members was not met. The meeting was therefore used to update those present on the status of outstanding issues and initiatives.

VP Denise Leonard discussed the status of the work to incorporate the NEBCA organization as a step toward non-profit status. Incorporation will effectively require dissolving the current organization prior to establishing NEBCA, Inc. Such an action will require a two-thirds vote of the membership.

Treasurer Joanne Krause said NEBCA currently has \$1394 in the checking account.

George Northrup, chair of the Novice Committee, expressed thanks to Carol Campion for hosting the Novice finals. Fifty one dogs competed this year. The final cost of putting on the Novice finals was about \$300. A final breakdown would be given at the annual meeting.

The novice and open committees were charged at the previous meeting to review the current rules which effect limiting entries to trials. The committees were not ready to propose any rule changes. Beverly Lambert reminded those present of some approaches that trial managers can currently use to control entries to their trials.

- Set an early entry deadline
- Limit novice entries per handler
- Limit total entries per handler per day

It was noted that there were still many 2000 calendars left to sell.

Carol Campion, discussing the newsletter, requested all lengthy submissions be in electronic format. She also solicited help to type in articles and trial results.

Sally Lacy suggested that NEBCA submit a request for funding from the ABCA. The request should be in the form of a grant proposal giving information about NEBCA (region, activities, membership) and how the money would be used.

The meeting was adjourned at 7:00 PM.

— Warren Mick





# Novice Points

Below is the listing of NEBCA Nursery trial points, updated through the Cummington Trial May 27, 2000. Handlers are urged to review the listings below and contact Heather Millen if there are any dogs that should be removed from this list.

Handler	Dog	Class	Total
Anne?	Nell	N	1
Ames, Mary	Sam	P	5
Ames, Sarah	Sam	P	4
Anderson, Deb	Nip	R	5
Armata, Barbara	Jen	P	28
	Jazz	P	5
Armata, Bernie	Briar	P	20
	Drew	P	7
	Susie	P	3
Asten, Sue	Glen	N	11
	Duff	N	17
Baker, Kim	Neil	P	4
	Becky	N	3
Baker, Roger	Beth	N	3
Billadeau, Mark	Dot	N	25
	June	P	9
	Nick	N	6
	Duncan	N	10
Billadeau, Renee	Moss	P	30
	Starr	N	20
Brake, Clint	Angus	N	3
	Switch	N	19
	Callum	P	4
Brighoff, Mary	Nick	P	7
	Coy	P	7
	Jim	P	9
Burr, Cheryl	Tess	N	39
Campion, Carol	Fly	R	4
	Sam	P	36
	Jan	P	6
	Reign	P	2
Carlton, Evie	Jack	P	8
Chambers, Maggie	Joy	R	21
	Lace	P	10
Collins, Kate	Pippen	R	40
	Queen	P	13
	Buddha	P	30
Conn, Tom	Nell	R	3
	Peg	R	6
	Maid	R	2
Craven, David	Nye	R	1
	Craig	P	14
Cunningham, Lori	Nick	N	15
	Tess	P	2
Curtis, Millie	Robbie	P	40
	Lily	N	6
	Austin	N	3
Dathe, Michael	Cooper	P	1
Deangelo, Tina	Osci	N	9
de Kenedy, Andrea	Hobbes	P	2
	Kep	P	4
DeMille, Mellissa	Beebe	R	20
	Stella	P	35
	Max	P	3
Deschambeault, L.	Bess	R	3
	Grace	P	13
	Smokey	P	16
Deschambeault, R	Jenny	P	10
	Fly	P	4
	Craig	R	3

DiMarcello, Louise	Hope	N	33
	Sally	P	27
	Cass	N	10
	Moss	R	3
Drummond, Rob	Spy	N	2
Edwards, Kym	Jen	N	11
	Susie	N	30
	Jack	N	1
Eitapence, Carlene	Lass	R	25
	Floss	R	2
	Anna	N	20
	Laddie	N	1
Enos, Evelyn	Zelda	N	9
Fallon, Mary-Anne	Faith	P	7
	Spy	P	38
	Dell	P	9
Felegy, Mary	Tam	N	20
	Gael	P	1
Fetterman, David	Chief	N	2
Fosher, Bill	Molly	N	3
Fossetta, Linda	Lizzy	P	30
	Meg	N	6
Fresson, Ken	Queenie	N	3
Garlick, Bruce Pat	R	2	
Geier, Joyce	Case	R	17
	Rio	P	11
	Tait	P	2
Goodwin, Carroll	Betsy	N	29
	Haze	N	7
	Floss	N	1
	Bama	N	22
Goodwin, Polly	Pearl	N	4
Gregor, Bill	Brew	R	24
	Willie	R	38
	Maggie	N	37
Hamilton, Dale	Piper	P	30
Hamm, Cokie	Zouk	R	3
	Lola	N	16
Hamm, Greg	Maya	N	36
Heidenberg, Paul	Heidi	R	44
	Jodi	P	17
Higgins, Michelle	Kilt	N	28
	Ace	P	17
Hornung, Sandy	Meg	P	7
	Jet	R	3
Hotchkiss, Linda	Jayne	N	23
	Kopper	N	12
Hughes, Kathy	Isabella	R	26
Hutchins, Darlene	Zach	N	7
Jackson, Jane	Keri	R	6
	Taff	P	2
Jaffa, Gail	Trace	N	7
	Slew	N	6
Jagger, Walt	Lass	R	19
	Jen	P	20
	Queen	R	1
	Maid	P	8
Kennedy, Jean	Jill	P	18
	Beth	R	9
Kennedy, Joe	Tammy	P	3
Kidd, Viki	Brae	P	29
	Ivy	P	2
	Boy	R	3
King, Molly	Ruby	N	23
Knight, Rolf	Jewel	N	4
Kramer, Bonnie	Trim	P	3
	Paige	P	1
Kramer, Deb	Tal	N	5



Krause, Joanne	Spice	P	3	Roche, John	Jack	P	10
	Hope	R	0	Sanderson, John	Molly	P	1
Kroemmelbein, Chris	Fred	R	31		Toss	N	4
	Dell	P	2		Glen	N	17
	Mary	R	4		Lass	N	6
Lacy, Sally	Gypsy	P	4	Sanderson, Sandy	Star	N	18
Lambert, Beverly	Kit	R	11		Lass	N	32
	Kirk	P	13	Savage, Lorna	Twist	R	1
	Rain	P	9		Dot	P	14
	Pippa	R	2		Spur	P	24
	Rue	P	4		Brock	P	1
Larson, Janet	Magnum	P	30	Sawyer, Judy	Margo	P	15
	Totsi	P	3	Schoen, Sue	Jim	P	1
	Meg	R	12		Claire	P	4
	Lan	N	5	Sharp, Dave	Rigel	P	16
	Maya	N	9	Sheninger, Gene	Shep	R	39
Lash, Carolyn	Kit	P	16		Meg	R	2
	Kyle	P	12		Nell	P	2
	Bess	N	2	Sheninger, Lauren	Nell	N	1
Leigh, Tom	Kate	N	34	Simpkins, Allison	Mandy	N	2
Leonard, Denise	Rose	R	3	Smiles, Carolyn	Faye	N	8
Leverett, Barbara	Queen	R	16	Smith, Sherry	Sweep	N	4
	Robyn	P	18		Jesse	R	2
	Babe	P	8		Mick	R	21
	Nan	R	3		Abby	N	13
Levin, Betty	Folly	P	40	Starkey, Barbara	Bessie	P	12
Levinson, Barbara	Tess	R	43		Katy	R	27
Lindsey, Janet	Kelly	N	10		Meg	R	1
Marschark, Eve	Turn	R	1		Hope	R	14
McGettigan, Ron	Mac	P	0		Dot	R	6
	Clue	P	11		Gael	P	7
	Buster	P	0		Jordan	R	4
McGrath, Joan	Gyp	N	3	Thompson, Mary	Mickey	N	2
Means, Chalmers	Clip	P	21		Coca	P	2
Merrill, Debbie	Brie	R	11		Hawk	P	23
Merrill, Gabe	Sue	P	12		Lobo	P	2
Mick, Maria	Ben	R	19	VandeCar, Peter	Pepsi	P	18
Mick, Warren	Glen	R	1		Bud	P	3
	Trim	P	2	Warner, Wendy	Kate	N	8
Mickey, Deb	Jill	N	2		Abby	P	6
Millen, Heather	Lark	R	33	Weigand, Carol	Ty	P	10
Millen, Roger	Roy	P	22	Wetmore, Steve	Gyp	P	16
Molloy, Sally	Gail	P	16	Williams, Cheryl J.	Jazz	P	1
Moran, Tina	Tasha	N	6		Meg	P	27
Morris, Gina	Kit	N	11	Williams, Dick	Nell	R	2
	Tazz	N	3		Tip	R	2
Murphy, Jim	Duke	N	32		Dot	R	6
	Rudy	N	6	Woesner, Dee	Fly	R	43
Murphy, Joanne	Rudy	N	8		Jake	P	3
	Lady	N	12		Joy	R	2
Murry, Dave	Bess	N	41	Worthington, Joan	Tess	P	33
Nunan, Michael	Jed	P	4	Wurst, Shelley	Summer	N	7
Nunan, Sharon	Jim	R	53	Yazwinski, Emily	Tarr	P	30
	Fan	R	55	Yazwinski, Molly	Moss	N	3
Pabst, Ed	Jade	N	19	Yazwinski, Sam	Flash	N	4
	Kate	N	8	Young, MaryEllen	Spot	P	22
Peterson, Becky	Libby	R	16	Zieser, Walt	Belle	N	27
	Taff	R	23				
Philips, Elizabeth	Queen	R	3				
	Jacko	P	5				
	Nell	N	9				
Philips, Phil	Ruthy	N	1				
Priest, Anne	Nell	P	29				
Reitboeck, Duncan	Sweep	N	1				
Reitboeck, Werner	Sweep	R	2				
Reuther, Lin	Patti	R	48				
	Fan	P	40				
Roberson, Fiona	Jess	R	7				



# trials

## July 1, 2 & 3

Bittersweet Farm SD Trial  
Bittersweet Farm, Hampton, CT  
2000 Purina Banquet Trial  
Two one-day Open &  
two one-day Novice trials  
USBCHA, NEBCA, Purina Points  
Contact: Carol Champion,  
(860) 455-9416; [championbc@aol.com](mailto:championbc@aol.com).  
★ site of NEBCA meeting

## July 8 & 9

Navall Farm SDT  
Two one-day Open & two one-day Novice trials  
offering Novice, Pro-Novice, and USBCHA  
Nursery.  
Only Open is NEBCA sanctioned; Open and  
Nursery are USBCHA sanctioned; all classes are  
OBCC sanctioned.  
Contact: Werner Reitboeck:  
(613) 448 3266

## July 14, 15 & 16

West Branch Sheep Dog Trial, Pottsgrove, PA  
Two one-day Open &  
two one-day Novice trials.  
Contact: Alan Lynch, (570) 649-6212

## July 29 & 30

The 8th Lennoxville International Sheepdog Trial,  
Bishop's University, Lennoxville, QC.  
Two one-day Open trials &  
two one-day USBCHA Nursery trials.  
NEBCA & USBCHA sanctioned  
No Novice, Pro-novice or Ranch classes.  
Contact: Fiona Robertson,  
(819) 842-4227; [creekside@videotron.ca](mailto:creekside@videotron.ca)

## August 5, 6 & 7

Nation Valley Sheepdog Trials  
Navall Farm, Township of North Dundas,  
Ontario (near Winchester)  
August 5: two Novice and  
Pro-Novice trials  
August 6 & 7: two one-day Ranch, Open, and  
Nursery trials  
Contact: Werner Reitboeck:  
(613) 448 3266

## August 8, 9 & 10

Renaissance Farm SDT.  
Sydenham, Ontario  
August 8 Novice, Pro-Novice & Open, August 9  
& 10 Open  
Contact: Lorna Savage (613) 541-0296 or J.P.  
Lalonde (613) 376-3659

## August 11, 12 & 13

Kingston SD Trials at Grasscreek Park  
Aug. 11: Pro-Novice and  
USBCHA Nursery  
August 12 & 13: Open  
Contact: Amanda Milliken or  
Mark Bustard, (613) 531-9405

## August 18, 19 & 20

Leatherstocking Sheep Dog Trial  
Cooperstown, New York  
One day Novice &  
two one-day Open trials.  
USBCHA sanctioned.  
Contact: Chalmers Means, [meansbar@dmcom.net](mailto:meansbar@dmcom.net);  
(607) 432-4903  
★ site of NEBCA meeting

## August 25 & 26

Truro Sheepdog Classic  
Truro, Nova Scotia, Canada.  
USBCHA and NEBCA sanctioned  
Contact: Anne Hamilton (902) 897-7480;  
[fred.hamilton@ns.sympatico.ca](mailto:fred.hamilton@ns.sympatico.ca)

## August 26

Vermont State Championship SDT  
Queechee Scottish Festival,  
Queechee, VT  
One-day trial, Open only  
USBCHA sanctioned  
Contact: Steve Wetmore (802) 765-4466

## August 27

Spring Valley Farm Open SDT  
Strafford, VT  
One day, Open only  
USBCHA sanctioned  
Contact: Steve Wetmore (802) 765-4466

## August 27

Ross Farm Museum SDT  
New Ross, Nova Scotia, Canada.  
USBCHA and NEBCA sanctioned  
Contact: Hilary Flower, (902) 634-4833,  
flower@ns.sympatico.ca.

## September 1 (Tentative)

Lancaster Fair SDT  
One-day Open Points Trial  
Lancaster, NH  
Roger Deschambeault  
603-939-2255

## September 2, 3 & 4

New Jersey State SDT  
Fosterfields Museum  
Two one-day Open &  
two one-day Novice trials  
Contact: Gene Sheninger,  
(201) 299-9785  
\* site of NEBCA meeting

## September 2

Blue Hill Fair Open SDT  
Celebrating its 44th year!  
One day Open Points Trial  
Blue Hill, ME  
Contact: Jim Davidson, (207) 677-2224

## September 3

Northeast US Open SDT  
One day Open Points Trial  
Blue Hill, ME  
Contact: Jim Davidson, (207) 677-2224

## September 15

Loon Mountain Open SDT  
One day Open Points Trial  
Loon Mountain, NH  
Contact: Steve Wetmore (802) 765-4466

## September 16 & 17

NEBCA Nursery Finals  
Armata Farm, Esperance, NY  
Contact: George Northrup, (978) 249-4407

## September 18 & 19

Eastern States Expo Sheep Dog Trial  
Eastern States Fair  
Three Open trials

Contact: Joanne Krause, (860) 267-6125

## September 30 & October 1

Canadian Border Collie Association Finals  
Morton, Ontario: Open; dogs must be CBCA registered, handlers must be CBCA members.  
Contact: Viki Kidd, 416-652-0892 or Jen Tidman,  
613-387-2669

## September 30

New Hampshire Championship  
One day; Open only  
Contact: Roger Deschambeault,  
(603) 939-225

## October 1

Fryeburg Fair  
Fryeburg, ME  
One day; Open only.  
Contact: Gabe Merrill, (207) 935-2520

## October 14 & 15

NEBCA Fall Foliage Finals  
Old Chatham Shepherding Company  
Chatham, NY  
Contact: Carol Campion  
(860)-445-9416

## October 20, 21 & 22

Hope's Farm SDT  
Springville, PA  
Two one-day Novice trials &  
two one-day Open trials.  
Judge: Aled Owen  
Contact: Mary Brighoff at Pre-Trial Management  
Services, (301) 898-1132

**Low-cost  
Liability Insurance**  
for NEBCA trials or clinics.

**NEBCA offers a low-cost  
liability insurance for any member  
running or hosting a trial or clinic.  
\$50.00 per day.**

**Contact: Joanne Krause  
(860) 267-6125**

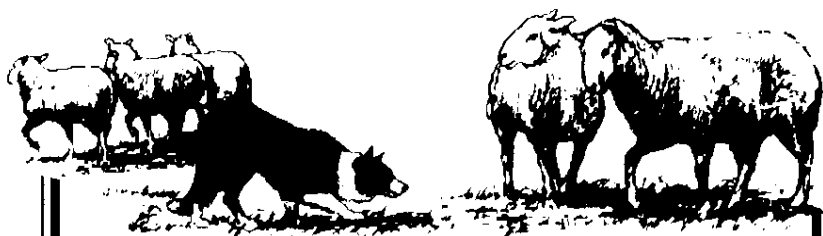
# the classifieds

Pups for Sale. Born May 11. Sire: Int. Supreme Ch. Craig (now owned by Amanda Milliken), Dam: Gail (Int. Supreme Ch. Moss x Sc. Nat'l Ch. Gwen), dam of 1999 Scottish National Champion Whiterose Kep. Both parents hips/eyes clear. Contact: Sally Molloy (609) 279-9728 molloy@njcc.com

Border Collies For Sale: Pups through finished dogs. Sheep to lease for dog trials and clinics. Contact: Roger Deschambeault, (603) 939-2255.

Custom Border Collie Training Services Available. Private lessons, clinics, and exhibitions. Pups through started dogs available. Cheryl Jagger Williams, RR1, Box 1374, Hop Bottom, PA. 18824 (717) 289-4733.

Hoop & Becky Peterson are now distributors of Ration Maker Premix, one of the leading sheep mineral products. We would love to consult with sheep producers to evaluate your sheep mineral needs. Orchard Valley Farm: (413) 624-5562.



## THE WORKING BORDER COLLIE MAGAZINE

14933 Kirkwood Rd.  
(Dept CT)

Sidney, Ohio 45365  
(513) 492-2215

Training Articles  
Veterinary Column  
Livestock Guard Dog Articles  
Trial & Clinic Dates  
Breeder's Directory  
Feature Articles

*Today's magazine for the  
working Border Collie.*

US Funds only  
\$25.00 yearly/US  
\$35.00 yearly/Canada

Border Collie Training Services for dog and handler. Puppies through started and trained dogs. Eve Marschark, Ivyrose Farm, Box 397, Bedminster, PA 18910. (215) 795-2023.

Merlynn Kennels Border Collies and Kathadin Hair Sheep. Merle and black and white puppies, occasionally started dogs. All breeding stock OFA certified and eye checked. Proven producers of trial and obedience winners. Kathadin Hair Sheep originated in Maine, excellent for working dogs, no shearing, no tail-docking necessary. Lynn Deschambeault, Merlynn Kennels, RR 1, Box 897B, Bridgton, ME 04009. (207) 452-2898.

Training Services Available: Help available for dog and handler in Connecticut. A variety of sheep; a variety of fields. Carol Campion at Bittersweet Farm. (860) 455-9416.

Registered Border Collies. Stud service and puppies from proven, working bloodlines! Breeding and guaranteeing satisfaction of versatile, working Border Collies since 1971! Lacy's Border Collies. Tom and Karen Lacy. Lacy's Border Collie Farm, 6535 Barksdale Rd., Richmond, VA. 23221-5703. (804) 226-4338.

Border Collie Training Services Available: Take advantage of lots of sheep and a large variety of working areas. Lessons and pups available. Handling Border Collies for over 12 years. References available. Barbara Leverett, 1512 Burrell Rd, St. Johnsville, NY, 13452. (518) 568-2833.

## Mick's Border Collies

### Available for stud:

**"Reggie"**

1999 NEBCA High Points  
Reserve Champ

Imp. **"Ken"**

Son of Welsh National Champ

**"Rock"**

Imp. **"Ben"**

All open trial winners!  
All pedigrees back to Great Britain Nat'l  
& Internat'l Champs! All hips OFA  
good and eyes clear!

**518-861-5854**

**mickwa@capital.net**





# NEBCA Merchandise...

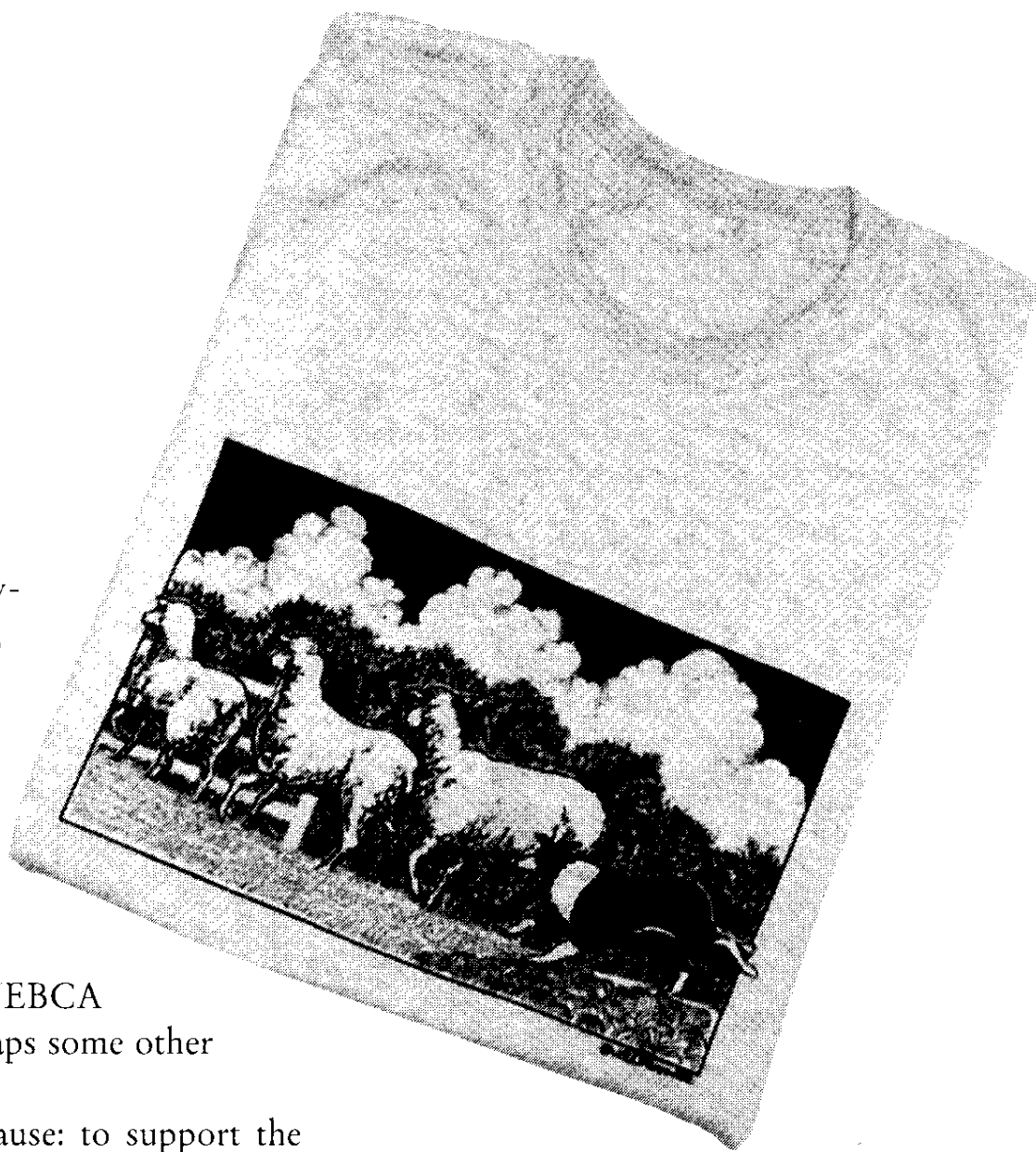
**Coming soon  
to a trial near you!**

Sure, you've envied those fashionable handlers in their heavy-duty, gray heather, all-cotton T-Shirts with the attractive, colorful design of a Border collie working, and you've asked yourself, "How can I join that select circle who wears such amazing attire?"

Well, the NEBCA T-Shirt is much easier to obtain than a National Finals jacket. All you need is \$12. Just ask any member of the fundraising committee: Liz Phillips, Barbara Armata, Joanne Krause, and Clint Brake.

The same crew can set you up with the 2000 and 2001 NEBCA calendars, NEBCA mugs for both home and travel, and perhaps some other specially-designed merchandise.

It's all useful, it's all attractive, and it's all for a good cause: to support the Northeast Border Collie Association. So look around for NEBCA merchandise at your next trial!



## Watch your mailbox!

Sometime soon, all NEBCA members will be getting a ballot in the mail. The question might seem a little confusing: You'll be asked whether you approve of dissolving NEBCA, but don't worry — we're not going out of business!

This is a housekeeping matter related to incorporation. We have recently become NEBCA Inc. and we need to dissolve the old organization.

It's important that everyone votes in the election. If you don't vote, your vote will be cast in favor of the dissolution of the old organization. Individual members get one vote; farm and family members get two votes. Please watch your mail, vote, and return your ballot as soon as you can.

The bylaws require a two-thirds majority vote in favor of dissolving the old organization before NEBCA Inc. becomes its successor. If the ballot question is approved, the following conditions will be observed in the transition from NEBCA to NEBCA Inc.

1.) All current NEBCA members will become members of NEBCA Inc. and have the same status and privileges.

2.) All assets and liabilities of the NEBCA

organization will be transferred to NEBCA Inc. The assets include the checking account, the lending library, fencing, and office supplies.

3.) All current elected officers of NEBCA will continue as officers of NEBCA Inc. Their terms will expire according to their election within the old organizations.

4.) All standing and special committee appointments will continue.

5.) The new organization will adopt all the current rules and guidelines of the old organization.

6.) Special prizes and awards will be continued.

7.) Points competitions will be continued.

# breeders

This listing of breeders of Border collies is for informational purposes only and in no way represents an endorsement of these breeders by the Northeast Border Collie Association. When making inquiries for purchasing a pup, NEBCA strongly recommends selecting from sound, proven, working stock. We suggest that you see both parents work. If you are not able to see the parents working at the farm, do attend the trials and see them working there. Watch for trial results and seek the advice of experienced handlers. Not all breeders listed here are handlers.

Clint & Linda Brake  
Tommy Hawke Farm  
76 Valhalla Farm Road  
Hillsboro, NH 03244  
(603) 478-3560

Carol & Larry Campion  
Bittersweet Farm  
109 Hammond Hill  
Hampton, CT 06247  
(860) 455-9416  
campionbc@aol.com

Richard Cody  
Cody Farms  
363 Old Stage Road  
Groton, NY 13073  
(607) 898-3812

Kate Collins &  
George Northrup  
Aurora Ranch  
PO Box 119,  
Taft Hill Road  
Royalton, MA 01368  
(978) 249-4407

Melissa DeMille  
Briarpatch Farm  
82 Old Post Road  
Clinton, CT 06413  
(860) 669-7578  
briarpatch@sheepdog.com

Lynn Deschambeault  
Merlynn Kennels  
RR 1 Box 897B  
Denmark, ME 04022  
(207) 452-2898  
merlynn@pivot.net

Roger Deschambeault  
Nearfield Farm  
HCR Box 16  
Center Conway, NH  
03813-9501  
(603) 939-2255

Walt Jagger  
Sheepy Hollow Farm  
Box 233  
Hop Bottom PA 18824  
(717) 289-4663

Joe & Jean Kennedy  
Borderline Farm  
575 Willow Street  
W. Barnstable, MA 02668  
(508) 362-3005  
jkennedy@capecod.net

Chris Kroemmelbein  
Lilly Hill Farm  
156 Gallmeier Road  
Milford, NJ 08848  
(908) 996-6163

Janet Larson  
76 Lee Hook Road  
Lee, NH 03824  
(603) 659-7046

Barbara Leverett  
1512 Burrell Road  
St. Johnsville, NY 13452  
(518) 568-2833  
rleveret@telenet.net

Betty Levin  
16 Old Winter Street  
Lincoln, MA 01773  
(781) 259-8799

Peg & Allan Lynch  
Lynch Mob Farms  
RR 2 Box 168  
Turbotville, PA 17772  
(570) 649-6212

Eve Marschark  
Ivyrose Farm  
Box 397  
3118 Farm School Road  
Bedminster, PA 18910  
(215) 795-2023  
spin@fast.net

Alex McKinven  
Cessnock Farm  
RR 1 26 University Road  
N. Hatley, QC J0B 2C0  
Canada  
(819) 842-2975

Edwin & Gabrielle Merrill  
Misty Lane Border Collies  
RR 1, Box 25  
Brownfield, ME 04010  
(207) 935-2520  
gabe@landmarknet.net

Warren & Maria Mick  
750 Meadowdale Road  
Altamont, NY 12009  
(518) 861-5854  
mickwa@capital.net

Sylvia & Heather Murray  
Fleece and Feathers Farm  
294B Cossaduck Hill Road  
N. Stonington, CT 06359  
(860) 889-7777  
aldrbkfarm@aol.com

Becky & Hoop Peterson  
Orchard Valley Farm  
41 Bell Road  
Leyden, MA 01337  
(413) 624-5562  
orvalbc@shaysnet.com

Gene & Lynne Sheninger  
Wayside Farm  
332 Split Rock Road  
Boonton NJ, 07005  
(973) 299-9785  
esheninger@worldnet.att.net

Steve Wetmore  
Spring Valley Farm  
Box 54  
Strafford, VT 05072  
(802) 765-4466

Richard & Cheryl Williams  
Culleymont  
RR 1, Box 1374  
Hop Bottom, PA 18824  
(570) 289-4733  
culley@epix.net

---

## NEBCA news

14 Village Road  
Surry, New Hampshire  
03431