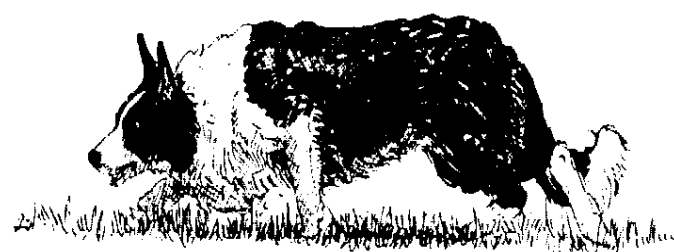


NEBCA NEWS

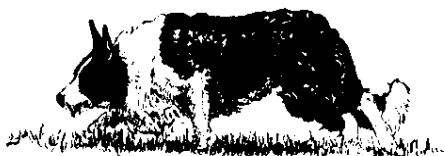


A Publication of the
North East
Border Collie Association



Fall
1998

NEBCA NEWS



An Official Publication of the
North East Border Collie Association

Publisher: NEBCA
Editors: E. & W. Carleton

-The NEBCA News-

is published quarterly as the official publication of the North East Border Collie Association.

Four issues are published yearly.
Supplements may be issued as required.

The deadline for all items to be included is three weeks prior publication:

March - deadline February 9th
June - deadline May 11th
September - deadline August 7th
December - November 1st

Please submit articles, photos, trial results, clinics, ads, etc., to:

NEBCA News
28 Greymoor Way
Orleans, MA 02653
e-mail: walter.carleton@gsc.gte.com
phone: (508) 240-1867

Subscriptions are acquired through membership to NEBCA.

Annual membership dues are:

\$15.00 per individual
\$ 20.00 per family/farm

To join, send your name, address, and dues to: Jean Kennedy
575 Willow Street
West Barnstable, MA 02668

Please make checks payable to NEBCA.

Our Thanks to this Issue's Contributors:

Alice Allen
Mary Brighoff
Carol Campion
Mike Canaday
Lynne Deschambeault
Melissa DeMille
Cokie Hamm
Sue Hobart
Sylvia Hollister - Tafts University
School of Veterinary Medicine
Cheryl Jagger-Williams
Jean and Joe Kennedy
Joanne Krause
Beverly Lambert
Betty Levin
Peg and Allen Lynch
Donald McCaig
Gabe Merrill
Maria and Warren Mick
Sharon Nunan
Red Oliver
Heidi Osgood
Becky Peterson
Lin Reuther
Peter VanDeCar
Mary Ellen and Dave Young

Cover photo:
Denise Leonard and Kate

All articles in the NEBCA News are printed with permission of the authors.

The North East Border Collie Association was formed to promote the breeding and training of the Border Collie as a working dog.

This group is dedicated to preserving the Border Collie as a stock dog for any livestock or poultry.

- NEBCA Officers -

President • Dave Young
32 Flanders Road
Sawyer ville, QC, JOB 3A0
(819) 889-3276

Vice-President • Denise Leonard
389 Adams Road
Greenfield, MA
(413) 773-5232

Secretary • Jean Kennedy
575 Willow Street
West Barnstable, MA 02668
(508) 362-3005

Treasurer • Joanne Krause
571 Westchester Road
Colchester, CT 06125
(860) 267-6125

- Board of Directors -

Lynn Deschambeault
RR 1, Box 897B
Bridgton, ME 04009
(207) 452-2898

Barbara Leverett
1512 Burrell Road
St. Johnsville, NY
(518) 568-2833

Eve Marschark
Ivyrose Farm, PO Box 397
3118 Farm School Road
Bedminster, PA 18910
(215) 795-2023

Becky Peterson
41 Bell Road
Leyden, MA 01337
(413) 624-5562

- Trials Committee Chairperson -

Warren Mick
750 Meadowdale Road
Altamont, NY 12009
(518) 861-5854

- Nursery Trial Committee Chairperson -

Dave Young
32 Flanders Road
Sawyer ville, QC, JOB 3A0
(819) 889-3276

Display Advertising

Prices are for camera-ready ads. Display advertising will not appear in supplements.

	Single Issue	Yearly		Single Issue	Yearly
Business Card:	\$ 15.00	\$ 50.00	Half Page:	\$ 50.00	\$ 150.00
Quarter Page:	\$ 35.00	\$ 100.00	Full Page:	\$ 75.00	\$ 225.00

Classified ads cost \$ 3.00 per issue or \$ 10.00 per year for 50 words or less. \$.20 per word will be charged for longer ads. **We cannot accept ads over the telephone.** Payment must accompany ad. (Non-members, please add 20%). Ad copy may not change throughout the year without an additional advertising fee.

Please make checks payable to NEBCA

ORGANIZATIONAL INFORMATION



Message from the President

It has been awhile since I last spoke with you, and since that time there have been two issues the NEBCA Executive team has been working on.

The first issue is trying to obtain nonprofit status for our organization. Eve Marschark has followed a trail of information on this matter which may seem complicated and expensive at first but will pay off in the long run. If there is anyone in this organization who has expertise in such matters, or knows someone who can help with the paperwork, please let Eve or myself know.

The second issue is that the NEBCA membership dues need adjusting. At the moment our dues barely cover the cost of the newsletter. I am considering an increase to \$20.00 for single and \$25.00 for farm/family membership. We looked already at ways of reducing the cost of the newsletter by getting more quotes on copying and bulk mailing.

At our present level of income there is hardly anything left to run the club after publishing the newsletter. Other costs we must cover include calendars, phone bills, championship trials, etc. Increasing the dues, which have remained the same for a long period, can help us reduce some of our obligations and improve our finances over the coming years.

Dave Young

NEBCA Meeting in Cummington, Massachusetts, May 23rd, 1998

The following Minutes were recorded by Lin Reuther:

The NEBCA meeting was held on May 23rd, 1998 in Cummington, Massachusetts. The meeting was opened by NEBCA's Vice President Denise Leonard at 5:30pm in order to approve the minutes from the annual meeting in Deerfield, MA on January 31, 1998 and to approve the change to the current nursery trial point system. The motion was accepted by Melissa DeMille and seconded by Barbara Armata.

Joanne Krause presented the treasurer's report:

Joanne stated that as of May 31st, 1998 NEBCA's total assets were \$ 3,669.02. As of right now NEBCA owes \$ 3,000.00 for the 1999 calendars, which should have been distributed at Cummington, but are late.

The 1998 calendars were paid in full, as well as the Summer NEBCA newsletter—about to come out— and the "NEBCA Benefit Trial" supplement.

Joanne thanked again everybody for organizing the benefit trial and the donations of many items. The trial raised more than \$ 1,000.00 to help the club.

George Northrope accepted Joanne's report as given, seconded by Betty Levin.

Warren Mick gave the Open Trials Committee report:

The proposed changes to the Fall Foliage rules were presented for a vote. The new qualifying requirements were approved as is. A discussion followed on the trial format. A motion was made to have two runs in the preliminary round instead of one. This motion was amended so that only the top ten scores from the preliminary round would advance to the final round. The trial format, so amended, was then approved. The new rules are included in this newsletter.

New Fall Foliage Trial Rules (Approved at 5/23/98 meeting)

Qualifying

To run in the 1998 Fall Foliage trial each dog / handler team must meet the following requirements:

- *The dog must have been owned by the handler for at least 30 days prior to the trial.*

continued on page 26

The Dorset

By Donald McCaig

Now that the weather is cooler, our rams are getting frisky. Each of our three rams is big and though their heads are big too, after you deduct for bone mass, there's not much brain cavity left. Most of the year, their brains are devoted to ingestion and elimination but when the temperature drops, a novel idea occurs to them: sex. We know this idea has occurred because they march to opposite ends of the ram lot, run straight at each other and collide with a thud that sounds like someone hitting an overstuffed chair with a sledge hammer. When they recover they do it again. It is their Superbowl.

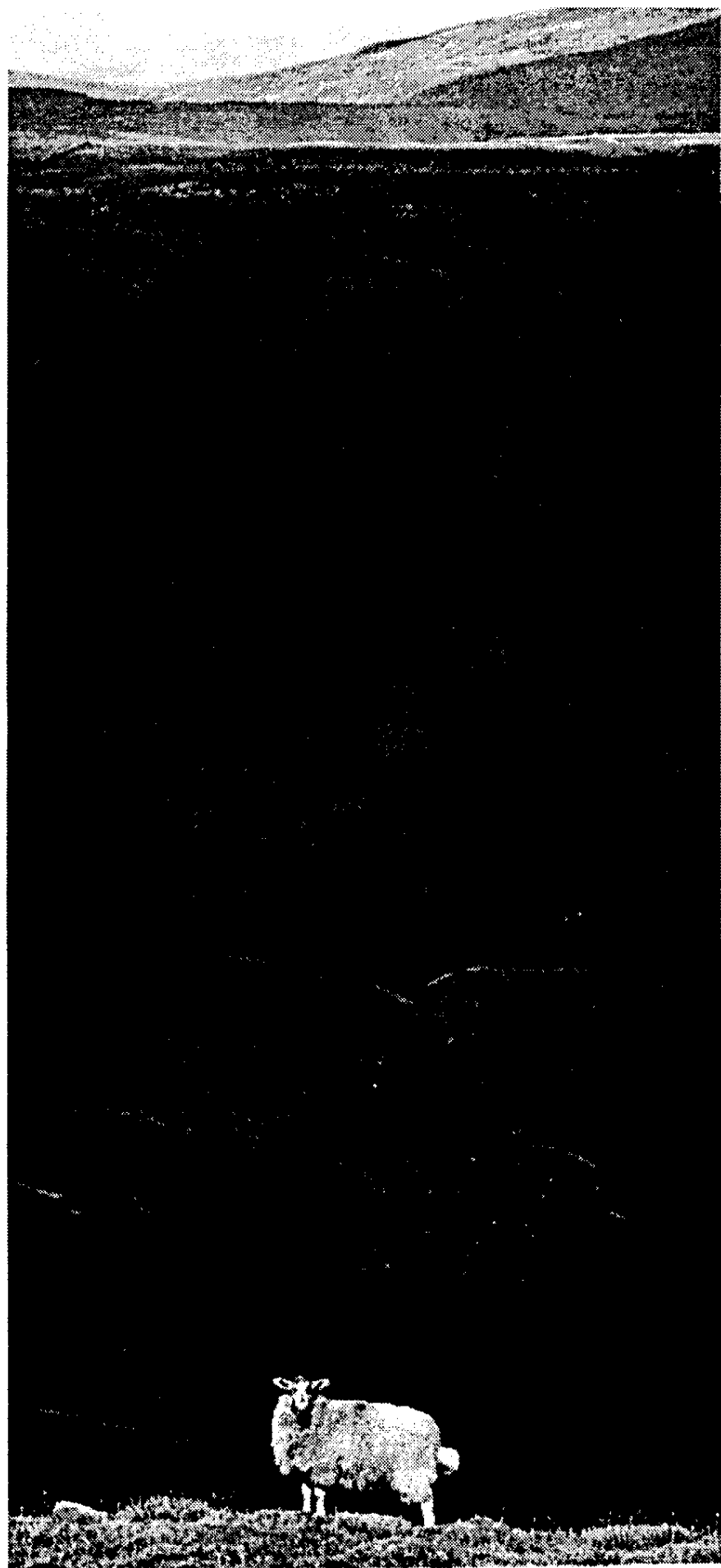


photo by derry brabbs

Each time the ewes pass the ram lot the rams line up and wrinkle their noses and curl their lips like Elvis Presley and give them "The Look".

Since we want lambs born twice a year, four weeks each time, the rams are allowed to romance the ewes twice, four weeks each time. The rams don't care about our schedule. Temperature drops, a little headbutting, then sex - that's the sequence they understand.

Our average ram romances fifty ewes but often, when we finally turn Romeo in with his massed Juliets, Romeo leaves them standing to run back to his pals. The ewes are patient about this sort of thing. To be female is to be patient, my wife Anne says.

Our Dorset ram weighs 325 pounds, has a great roman nose and a bad attitude. At one time he was a show sheep, led around a showring and he lost his respect for people. The dorset is built like a forklift and, for a ram, he's clever. He knows that if you rub a 325 pound ram around a wood and wire pen long enough, something will finally break and there'll be a hole he can moosh through and somewhere on the other side will be . . . sex.

In the morning, first thing I see out the window, before I get my first cup of coffee is the dorset broke out to be with the ewes. I come howling out there with the dogs to put Romeo back where he belongs. Ignoring me, ignoring the dogs, the Dorset lowers his head and trudges toward the ewes. If I pounce on him, he drags me and if I tell the dogs to take a hold, he drags them too.

Last week, third day in a row he busted out of his ram roof pen, wiggled through strands of high-tensile not three inches apart and lifted our garden gate off its hinges, I met him in the field and charged. Don't let anyone kid you: adrenalin is a wonderful drug. I took hold of that Dorset and threw him over on his side. My heart was pumping like it meant to burst and the world was spinning and I had to sit down so I sat on the Dorset. Flat on his side with his feet stuck out, he wasn't going anywhere.

It became a philosophical moment.

The Dorset and I have things in common. We both have grey in our hair, we're both old enough to wish we weren't, we've both spent the best years of our lives here on this farm between the mountains.

Most of the year, me and the Dorset get along. He never gets health problems; he's easy to shear; he always settles his ewes.

The Dorset is thinking that when I let him up he will go and find those ewes. I guess if you only have room in your head for one idea, romance isn't the worst idea to have. 🐏

Control

By Red Oliver

Dogs worked by outstanding handlers obey every command. But they still use every bit of their instincts when the situation calls for it. How do dog and handler achieve this balance?

First, by blending the right kind of dog-based on its breeding—with the right kind of training. In our earlier stages of training we teach a pretty “mechanical” classroom lecture. We teach the expected behavior to a given command without much herding reason. But then, as soon as we can, we put reason to our expected behavior where the dog fulfills a herding function. The “off-balance” or “changing the balance point” is best done by seeing that the dog wants to do one thing and we ask him to do another, but we try to do this only when our request will actually give him an unexpected herding bonus. (Some of the “mechanical” dogs are hammered on so much that they never learn to move on their own. The worst example of this I have seen, is the result of training with a shock collar and using it as punishment on one of the best dogs—instinct and inherited herding-traits—in the nation.)



“Those sheep won’t go anywhere!”

The right approach to achieve this is, as Glyn Jones says, to walk miles and miles backward and then forward, zigzagging, figure eight-ing, stepping back through the sheep. This exercise not only teaches the young dog most of his commands and lets him develop his herding instinct, but also teaches the dog to fetch the sheep to the handler—that is, to go to the sheep’s heads and turn them when they seem to be escaping. Instead of making him mechanical, this stage makes him a partner in the work load and it is in this stage when he starts to trust us as knowing what we are doing.

The well-trained dog never misses a command, but the commands must *be always for a reason*—a reason for him to do something. I think we have all read, and heard many times, that if we are going to teach our dog a blind outrun, ALWAYS make certain there is stock out there. This same concept applies to our early training.

There is a time for teaching obedience and making our dog “mechanical” to have control over our dog. Would any of us want a dog “out of control”? No. But control has very little to do with being “mechanical”. A mechanical dog on the trial field is one that has been so disciplined that it not only obeys every command, but never challenges those commands. A nonmechanical dog would move on instinct not to let the stock get away.

When I see folks, including myself, walking to the post with their dogs on leash, I wonder if they understand the message they are giving the audience and their dog: “they don’t trust their dog to be under control.”

To blend instinct with learning, avoid giving commands in training that you think the dog will not take. (If you are like me, you sometimes give the wrong command, or give it too late, but that doesn’t excuse the dog from minding. It does say that you (and I too) make it difficult for your dog.) For example, during early training do not give a “down” at the exact instance a ewe breaks into a dash for somewhere else. Let your dog fetch her back and use his instincts whenever you can.

A good exercise combining control and instinct, is penning five sheep that have never been in a small pen and are terrified of handler and dog. Our dog brings them up, taking our “steeeaady” voice command. We now move our dog a few inches or feet to its left or right until a sheep reflexively tightens its muscles. At this first and slightest movement allow the dog to stop the sheep before it gets started (without command). Then shift position, and repeat it.

Once your dog is fully trained and under control, it all turns easy: He never lets the sheep take off. He never pushes too hard. Now is the time to let our dog do things on his own. 🐾

Eloquent Eyes - Do You See What I See?

Part 2 of 2

FORM AND FUNCTION

The way dogs see is similar to the way we see (illustration). First, light passes through the transparent *cornea*. It then reaches the colored *iris*, which expands or contracts depending on the amount of light in the environment. The iris controls the size of the *pupil* (the eye's "black hole"), thus regulating how much light reaches the lens. The lens bends light rays and focuses them on the *retina*. The retina, in turn, transforms light into nerve impulses through a complex electrochemical process. These impulses are transmitted along the optic nerve to the brain, which interprets the impulses as images.

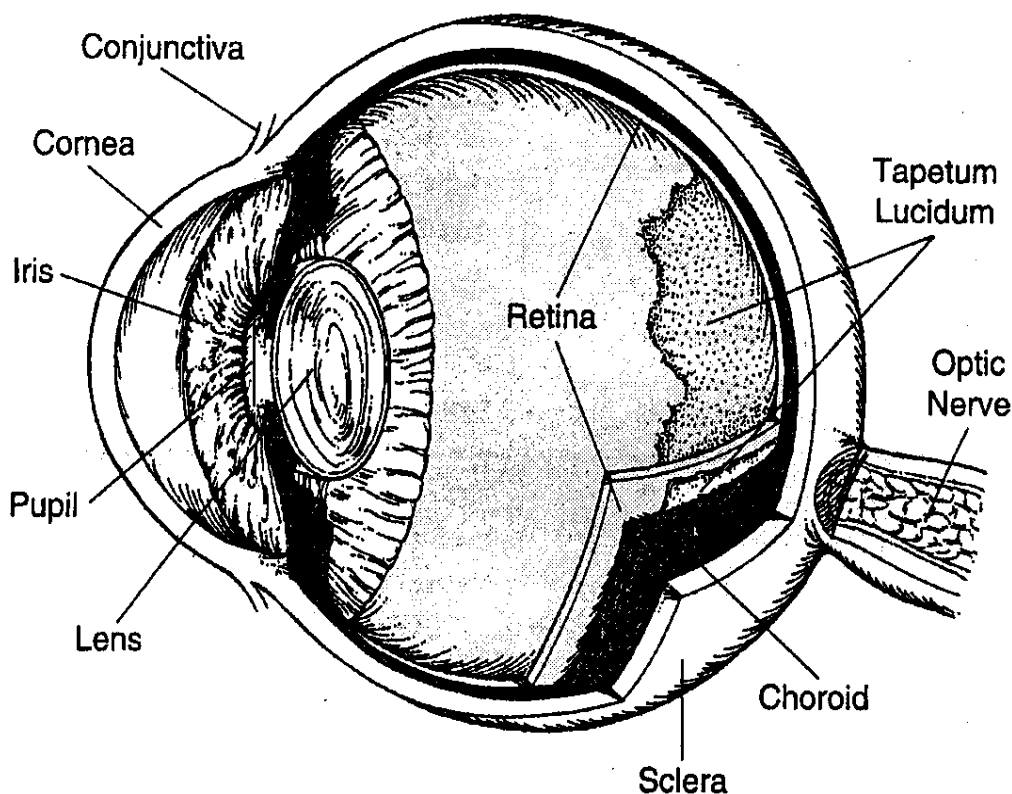
Despite basic structural and functional similarities, however, canine and human eyes have significant differences. Taking these differences into account, it's probably safe to say dogs see the world in a different light than people.

EYE DISEASE

The delicate structure of your dog's eyes makes these "windows on the world" vulnerable to numerous diseases and injuries. According to Dr. Kenneth Abrams, a Rhode Island-based board-certified veterinary ophthalmologist, owners should be on the lookout for discharge, redness, and cloudiness—the most common warning signs of eye disease. And, of course, if your dog starts bumping into things, you should naturally suspect vision loss—even if your dog's eyes *appear* normal.

CONJUNCTIVITIS—inflammation of the delicate membrane that lines your dog's eyelids and the front of the *sclera* (the white part of the eye)—is one of the most common canine eye ailments. Causes include infection, scratches, and eye irritants like smoke or dust. Typical signs are redness of the eyelid lining, squinting, and discharge. To treat conjunctivitis, veterinarians usually prescribe medicated ointment or drops, depending on the cause. (Ask your veterinarian on how to apply eye medication without stressing out your dog.)

EYEBALL ANATOMY



A dog's eye has a third eyelid (*nictitating membrane*) that helps cleanse and lubricate the eye like a windshield wiper. But sometimes the third eyelid's tear gland protrudes outward, appearing as a bright red bulge in the inside corner of the dog's eye (hence the name **CHERRY EYE**). Surgery for cherry eye usually involves repositioning the gland. Veterinarians are reluctant to remove the tear gland because doing so increases the risk of "dry eye", a syndrome that makes the cornea susceptible to damage.

SCRATCHES or ABRASIONS of a dog's cornea are also quite common. Corneal damage often causes eye redness. And dogs may also paw at their eyes because of discomfort. If you clearly see a foreign body, try to remove it by carefully irrigating your dog's eye. Gently hold your dog's eye open and squeeze a sterile gauze pad soaked in warm water over the open eye. Even if you succeed in flushing out the object, take your dog to the veterinarian. Your veterinarian will check for corneal damage by applying a special stain to your dog's eye. He or she may also measure the tear output from your dog's *lacrimal glands*, using a filter-paper strip. Any delay in treating corneal lesions could lead to the development of a painful *corneal ulcer* or an inflammatory condition known as *keratitis*.

GLAUCOMA—increased eye pressure caused by fluid buildup in the eye—is a serious disease that can lead to partial or total blindness. “No one really understands what causes glaucoma, though its incidence in certain breeds suggests an inherited component,” says Dr. Abrams. Signs include redness, cloudiness, excessive tearing, eyeball swelling, pain, and sensitivity to light. After diagnosing glaucoma by measuring eye pressure with a tonometer, veterinary ophthalmologists treat the disease with pressure-relieving medication or laser surgery. In some cases, surgical removal of the eye is necessary.

PROGRESSIVE RETINAL ATROPHY (PRA) encompasses a group of vision-destroying diseases caused by deterioration of the retina’s image-processing cells. An inherited ailment with no known treatment, PRA often develops so gradually owners may not notice the signs until a dog experiences loss of night vision or total blindness. Veterinary geneticists and ophthalmologists are intensively studying PRA, but at present, the only known preventive measure is to *not* breed a dog that has PRA or has produced puppies that later developed the condition. Although aging is not a disease, it often brings changes in your dog’s vision. In general, older dogs are not as responsive to visual stimuli as younger dogs. Older dogs also often show signs of *nuclear sclerosis*, a nonpathological hardening of the lens that causes cloudiness. Owners sometimes mistake this sign of aging for a cataract.

PREVENTING EYE PROBLEMS

Applying common sense is the soundest strategy for preventing eye problems. Always keep your dog’s head inside moving vehicles, check your dog’s eyes on a regular basis, and make sure your dog’s annual veterinary checkup includes an eye exam. Seek veterinary help for eye problems as soon as you notice them. “The earlier we get to treatment, the better,” says Dr. Abrams.

If you’re considering adding a puppy to your family, select a breeder who routinely has a veterinary ophthalmologist test parents and puppies and submits the data to the Canine Eye Registry Foundation (CERF). Located in West Lafayette, Indiana, CERF collects and disseminates information about breed-specific eye disease in an effort to curb genetically transmitted ocular conditions. (Keep in mind, however, that a parent’s or pup’s CERF certification is no guarantee of lifelong ocular health.)

Reproduced by permission of “Your Dog”, a monthly newsletter for caring dog owners, published by Tufts University School of Veterinary Medicine
200 Westboro Road, North Grafton, MA 01536



Coyotes and Your Dog

The Division of Fisheries and Wildlife brochure on coyotes suggests the following steps to minimize the risk:

- Don't Leave Dog Food Outdoors*—If you feed outdoors, offer only the amount your dog will eat in one feeding.
- Secure your Trash*—Coyotes, like dogs and raccoons will knock over trash cans and rip open trash bags.
- Secure your Dog*—Minimize the risk to your dog by keeping them restrained when you are not around.

These rules apply equally to foxes, raccoons, and other wild animals. If you suspect that your dog has had an encounter with a wild animal, contact your veterinarian as soon as possible.

NEBCA CHAMPIONS

ABC No: 19421

Name: Tara*

Sex: Fem Date of Birth: 6/2/90

Owner: Maria Mick

Breeder: Mike Canaday

Color and Markings: Tri-color, bl/br/wht; med; med

* Won four and placed in 26 open northeast trials;
5th in 1997 NEBCA High Points.



SIRE	Sandy ABC 2808	Tony ISDS 66922	Sweep ISDS 39603	**Wiston Cap ISDS 31154
Owner	M Canaday, NY	D. Carlton, Eng	J. S. Hastie, Scot	Lassie ISDS 23501
Breeder	A. H. Beaton, UK	Persshore Queen ISDS 110568	**Craig ISDS 59425	** Bos Coon ISDS 34186
		E. F. Morgan	J. R. Thomas, Eng	Gyp ISDS 38336
			E. F. Morgan, Eng	Chip ISDS 29946
DAM	Imp. Tib ABC 8823	Nip ISDS 119977	#Dryden Joe ISDS 104626	Jill ISDS 49652
Owner	M Canaday, NY	W. S. Elliot, Scot	R. Dalziel, Scot	Roy ISDS 88481
Breeder	W. S. Elliot Roxburghshire, Scot	Gael ISDS 139916	W. S. Elliot, Scot	Fawsley Beck ISDS 76744
		G. Pringle, Eng	G. A. Redpath	Glen ISDS 75630
			Ben ISDS 110810	Dryden Queen ISDS 70345
			G. Pringle, Eng	**Wiston Cap ISDS 31154
				Tess ISDS 64456
				*Ben ISDS 56646
				Chris ISDS 60920
				Tweed ISDS 92756
				Nell ISDS 121571

The Best Breed of Dog

By Mellissa DeMille, Ph.D. Genetics

ABCA Eye Committee member

The Border Collie is the best breed of dog. There is no question. This is a breed that has retained genetic diversity while being intensely selected for intellectual and athletic performance. This diversity is part of the sacred heritage we have been given to protect.

The frequency of Collie Eye Anomaly (CEA) in Border Collies has reached the level of inconvenience. Requiring dogs which run in the USBCHA / ABCA National Open or Nursery Trials to have eye tests has turned up CEA in some promising dogs and the current policy is to exclude them from running in the trials.

The question of whether requiring cleared eyes at the Finals should be continued or dropped has erupted into a lively discussion. I come to this controversy from the point of view of a geneticist looking at what is the best policy for protecting the Border Collie's heritable talents for the next hundred years.

Just as the most popular stud dog is often the least proven, before his performance has been picked apart enough to find the faults, the most popular line to breed to in the face of policies which penalize carriers of genetic diseases will be the line where these shortcomings are the best hidden. Don't fool yourself, *every dog carries genetic diseases*.



photo by e. g. carleton

Joanne's Hope

When Dr. Denise Wall and I started collecting blood samples to help track down the molecular basis of CEA, we found willing participants. We suddenly encountered refusals when the eye test policy for the finals was passed. The viewpoint of the persons issuing these refusals was that they felt that once this policy was in place it opened the door for draconian ISDS-like policies. The ISDS very neatly trimmed down the genetic diversity of the Border Collie in the British Isles by rescinding registration on dogs either diagnosed with or parenting those diagnosed with the disease cPRA, a disease now known to have very little genetic component to it. This policy has also been extended to CEA with **no** effect on the carrier frequency or incidence of CEA. Who knows how many valuable bloodlines have been lost due to this ineffective policy?

Is it a physicians motto, "First do no harm."? It should also be ours. Once gone, genetic diversity cannot be regained. Ask the Cheetah, ask the Elephant Seal, ask the breeders of small gene pool breeds plagued with a huge assortment of genetic diseases. Although the Border Collie has greater genetic diversity than any other breed, if you compared the diversity of the BC with an unselected population of equal size you would find the BC lacking in diversity. We are the guardians of our breed, it is up to us to **CAREFULLY** reduce the incidence of genetic diseases while maintaining the health of our gene pool. Carefully does not include discarding every dog with an identifiable genetic disease in its lines. The ABCA eye committee is currently formulating a policy to do this. 🐾

FLASHBACK – From the NEBCA News Archives

For several years my practice field was a quarter acre lot nearly in our neighbor's backyard. Every morning and every afternoon I would go out and train my young dogs there. After our new neighbors had been in the house for a couple of weeks, I chanced to meet the husband in the yard while I was working the dogs. I stopped to check with him that I wasn't disturbing their mornings with my practice. "Oh no," he said. "We think it's wonderful. But we have been wondering, what do you do with the sheep after you finally get them trained?"

Beverly Lambert

1998 EVENTS

1998 NATIONAL OPEN & NURSERY QUALIFIED DOGS

Listed below are the NEBCA handlers and dogs who have qualified for the 1998 National Finals and Nursery Finals.

Last updated July 19, 1998

OPEN

BRIGHOFF, MARY	RON MOSS MIRK BURL DELL BEN ROBIN SMUT FLO NAN ROY TWEED BOB TRU MIDGE JUGGS THOMAS JOHN GAIL LARK JET PAT TEA SILK ANNIE TARA TIM EUCHER GRACE HAZEL RUSH MEG SWEEP DYNA KEN SADIE BEN FLEET BEN
BUSTARD, MARK CAMPION, CAROL CANADAY, MIKE	
GEBAUER, ED JAGGER, WALT	
KLIMEK, MERRY LACY, SALLY	
LACY, TOM	
LAMBERT, BEV	
MARSCHARK, EVE MCCAIG, DON MICK, WARREN	
MILLIKEN, AMANDA	
PARROTT, BROOKS REITBOECK, WERNER SHENINGER, GENE SMART, BRUCE	
WILLIAMS, CHERYL	
WILLIAMS, RICHARD YOUNG, DAVE	

NURSERY

CANADAY, MIKE GEIGER, JOYCE LACY, TOM LAMBERT, BEV MICK, WARREN MILBERG, SANDRA MILLIKEN, AMANDA PARROTT, BROOKS SMART, BRUCE STARKEY, BARBARA YOUNG, DAVE	TIP CASEY JOHN NAP REGGIE SCOTT GRACE GIN REED RUSH PEG HOPE STREAK
--	---

CLINICS

August 29-30/98

Clinic taught by Cheryl Jagger Williams in Greenfield, MA.

For more information contact

Denise Leonard

389 Adams Road, Greenfield, MA
call (413) 773-5232

or e-mail: dal@shaysnet.com

September 19/98 (Saturday)

THIRD ANNUAL 8 in 1 Seminar/Clinic

Eye Testing, Tattooing,

Micro-chip implanting, Pennhip Procedure
Seminar, Agility, Flyball, Herding Instinct
Testing and Herding Clinic.

Thompson's \Lacy's Farm, Richmond, VA

Contact: **Dr. Karen Lacy at (804) 226-4338**

September 19-20/98

Clinic taught by Mike Canaday at Roger Deschambeault's Nearfield Farm in East Conway, NH. Classes limited.

Pre-registration--deadline September 1st.

Contact:

**Lynn Deschambeault at 207-452-2898 or
Fran Wheeler at 207-793-2679;**

fax 207-793-8351;

email willowgate@cybertours.com

DO NOT call Roger Deschambeault — he will just refer you to one of us.

September 26-27/98

Training and Handling Clinic

Tommy Wilson Instructing

Trial & Error Acres, Mt. Airy, Maryland

Contact: **Nancy Starkey at (301) 253-4732**

e-mail: NCStarkey@aol.com

Training Clinic

tentative October 1998

at Louise DeMarcello in Springville, PA

Instructor, Cheryl Jagger Williams

Contact:

Louise DeMarcello (610) 296-5273



The Dutchess County SPCA would like to invite you to join our "Paws in the Park 98" fun day and fundraiser to benefit the animals of the DC SPCA on Saturday, September 12, 1998 at Bowdoin Park in Poughkeepsie, rain or shine. In addition to a petwalk, we have a full day of Border Collie demonstrations, entertainment, vendors, and contests. Please come.

TRIALS

***August 29-30, 1998**

Keystone State Benefit SDT

(also refer to 1998 Trial Schedule)

Just after we announced our farm trial to the NEBCA newsletter, the Willow Grove Naval Air Station called and invited us to host the Keystone State SDT on their spacious facility.

We, the managers, offer our sincere apologies for any inconvenience this change may have caused, but do hope you will come and join us on this beautiful, 15+ acres, a challenging course, and ready Katadins.

All proceeds will benefit the Navy-Marine Corps Relief Society—a volunteer organization supporting US Sailors and Marines in need.

USBCA Ranch offered one day

Eve Marschark (215) 453-7708 or

Nancy Ortiz-Sharp (215) 795-2023

Visit the NEBCA LIBRARY

For a list of books and videos refer to the 1997 NEBCA Winter News or contact the librarian Susan Myschka.

Guidelines for Library Use:

- Borrowers must be members of NEBCA.
- Books are loaned free of charge for three weeks.
- Videos are \$4.00 per single video, (\$3.00 each in sets). They are loaned out for two weeks per single, and three weeks for sets.
- Borrowers are responsible for return mail.
- Only one book or video (or set of videos) may be sent out to members at one time.
- Overdue fine is 10 cents per day.

Send request in writing to:



Susan Myschka
3 Conrad Street
Mystic, CT 06355

e-mail address:

NEBCA LIB@aol.com

Remember to review lending requirements prior to making your request on line. Checks may be made payable to NEBCA.

1998 NEBCA TRIAL SCHEDULE

~~August 27, 1998~~

September 3, 1998

Lancaster Fair Sheep Dog Trial
Lancaster, NH
One Day Trial (points)
Roger Deschambeault
2440 East Conway Road
Center Conway, NH 03813
(603) 939-2255

August 29-30, 1998

* see page 10

Keystone State Sheep Dog Trials
Willow Grove Naval Air Base
Willow Grove, PA
Two days Open and Nursery Trial
(Purina points, USBCHA)
Eve Marschark (215) 453-7708
or Nancy Ortiz-Sharp (215) 795-2023

September 5-7, 1998

New Jersey State Sheep Dog Trial
Fosterfields, Morristown, NJ.
Two 1-day Novice & Open Trials
Gene Sheneringer
213 Split Rock Rd., Boonton, NJ 07005
(201) 299-9785

September 5-6, 1998

Blue Hill Fair & Northeast US SDT
Blue Hill, ME.
Two 1-day Open Trials (points)
Jim Davidson
North Country Farm,
Round Pond, ME 04564
(207) 677-2224

September 7, 1998

Windsor Fair Open Trial

September 11, 1998

NH Highland Games
Loon Mountain, NH
One day Open Trial (points)
Lynn Deschambeault
RR1 Box 897 B, Bridgton, ME 04009
(207) 452-2898

September 19-20, 1998

Brush Run Farm SDT,
Charleroi, PA
Benefits the Parental Stress Center and
Fallow Field Township Vol. Fire Dept
Two 1-day Novice and Open Trials -
USBCHA
Allison Gebaurer
66 Zippay Rd., Charleroi, PA 15022
(724) 483-7432

September 21, 1998

Cumberland Fair Trial
Cumberland, ME.
One day Open Trial
Gabe Merrill
RFD1 Box 25, Brownfield, ME 04010
(207) 935-2520

September 21-22, 1998

Eastern States Exposition SDT
West Springfield, MA
Two 1-day Open Trials
Carol Campion
109 Hammond Hill Rd., Hampton, CT 06247
(860) 455-9416

September 26-27, 1998

NEBCA Nursery Championship
sponsored by CENTRAL CAPE DODGE
Sheriff's Youth Ranch, Marstons Mills, MA
Joe Kennedy
West Barnstable, MA 02668
(508) 362-3005
e-mail: jkennedy@capecod.net

End of 1998 Open Season

October 3, 1998

NH State Championship Dog Trial
East Conway, NH
One day Open Trial
Roger Deschambeault
2440 East Conway Rd., Center Conway,
NH 03813 (603) 939-2255

~~August 15-16, 1998~~

October 3-4, 1998

Lamprey River Farm
Two 1-day Novice Trials
Janet Larson
76 Lee Hook Rd., Lee, NH 13825
(603) 659-7046

October 4, 1998

Fryeburg Fair Sheep Dog Trial
Fryeburg, ME
One day Open Trial
Gabrielle Merrill
RFD1, Box 25, Brownfield, ME 04010
(207) 935-2520

October 10-11, 1998

**NEBCA Fall Foliage
Championship**
Old Chatham, NY
Warren Mick
750 Meadowdale Road
Altamont, NY 12009; (518) 861-5854

October 17-18, 1998

Mountain Meadow Nursery Trial
Lebanon, NH
Two 1-day Novice Trials
Bud Ames
46 Eastman Hill Road
Lebanon, NH 03824 (603) 448-5429

October 24-25, 1998

Maplewood Farm Halloween Trial
Two 1-day Novice Trials
Joanne Kraus
571 West Hill Road
Colchester, CT 06415 (860) 267-6125

1998 East Coast TRIAL SCHEDULE

Aug 29, 1998

Truro Rece-way SDT, Truro, NS
Judge: John Atkinson (England)
Contact:
Fred Hamilton (902) 689-2410
e-mail: fred.hamilton@ns.sympatico.ca

Sep 19-20, 1998

Hawkridge Farm SDT, Morton, Ontario
Contact: Jennifer Davies
(613) 387-2669

Sep 30, 1998 (Wednesday)

22nd VIRGINIA STATE FAIR SDT
Richmond, VA
Contact: Dr. Karen Lacy
(804) 226-4338

Oct 21-25, 1998

**1998 NATIONAL & NURSERY
FINALS, El Reno, OK**

Oct 24-25, 1998

2nd ANNUAL
STRAWBERRY HILL SDT
Highland Games & Celtic Festival
Location: The VA State Fairground
Contact: Dr. Karen Lacy
(804) 226-4338

New: November 1, 1998

Free State Sheep Dog Trial
Trial & Error Acres
Mt. Airy, Maryland
Contact:
Nancy Starkey (301) 253-4732
e-mail: NCStarkey@aol.com

TRIAL RESULTS

Springton Manor Farm Nursery Trial

Glenmoore, PA, April 24 - 25, 1998

Judge: Jeff Hoffman

Trial Managers: Sharon Nunan and Ron McGettigan

Half of a beautiful weekend, good field, sheep, and friends were what the Springton Manor Farm Nursery Trial was all about again this year.

Sixty-five hardworking dog/handler teams competed at our fourth nursery trial. Sheep were the usual flock of Barbs, Barb crosses, Cheviots, and an assortment of other crosses. Treated carefully, especially Saturday morning for the novice folks, they worked just fine. For additional challenge, a few interesting Jacobs were thrown in.....and they were a challenge, especially on Sunday. I must say, dogs and handlers did an excellent job of handling the sometimes difficult situations with the Jacobs.

Tom Forrester set out for the entire weekend doing his usual first-class job. Our sheep pen crew, Mike Hearn and Katie Bates, deserve a huge Thank You, along with Sue Asten and Kep who took control of the exhaust, and generally were our "right hand." She was there when needed "under the tent", helping with score sheets, and keeping an eye open for anything that needed attention.

Barbara Levinson kept the large group of spectators informed with her quality announcing. Barb Starkey, Susanne Craddock, and Louise DiMarcello jumped right in to help with the scribing duties for our judge, Jeff Hoffman.

Many thanks to Chris Kroemmelbein for his help in "trailing" the sheep to the field and helping Ron, Louise, Barb and me to set up the course on Friday.

Everyone seemed to enjoy the challenge of running on this particular course—it is heavily strewn with good-sized, mostly submerged boulders and rocks that confused a few dogs the first day. However, those same rocks provided the handlers with something to go by on the sometimes tricky cross drive.

When the dust settled, the Novice Overall Champion was **Mary Brighoff** and **Val**, Ranch Champion was **Tom Lacy** and **John**, who also won the "Long Haul" award for the highest scoring dog trained by owner from puppyhood, and finally, the most promising young dog was **Linda Tesdahl's Jayce**.

Sharon Nunan

SATURDAY

Novice/Novice—20 dogs

1. Sherry Smith	Jess	72
2. Joan Worthington	Tess	70
3. Allan Lynch	Corrie	70
4. Louise DiMarcello	Sally	69
5. Dave Sharp	Rigel	67
6. Bob Vannoy	Fred	67
7. Eunice Morgan	Peggy	67
8. Sandy Hornung	Meg	65
9. Kim Baker	Beth	62
10. Sandy Hornung	Jet	62

Pro-Novice—19 dogs

1. Mary Brighoff	Val	76
2. Sherry Smith	Mick	75
3. Kathy Hughes	Summer	70
4. Kathryn Paxton-Hill	Ty	70
5. Peg Lynch	Jill	69
6. Chris Kroemmelbein	Floss	67
7. Ray Rogers	Jessie	67
8. Tom Lacy	Gail	65
9. Barbara Starkey	Bessie	65
10. Peg Lynch	Pepper	65

Ranch—25 dogs

1. Tom Lacy	John	83
2. Allan Lynch	Jen	79
3. Susanne Craddock	Ellie	78
4. Barbara Levinson	Ivy	77
5. Sharon Nunan	Jim	75
6. Sharon Nunan	Fan	74
7. Nancy Ortiz	Aquilla	73
8. Allan Lynch	Scout	71
9. Merry Klimek	Ben	71
10. Chris Kroemmelbein	Queen	66

SUNDAY

Novice/Novice—20 dogs

1. Dave Sharp	Rigel	74
2. Louise DiMarcello	Hope	74
3. Sandy Hornung	Jet	73
4. Kathryn Paxton-Hill	Pepper	73
5. Kim Baker	Beth	66
6. Allan Lynch	Corrie	65
7. Bob Vannoy	Fred	64
8. Sherry Smith	Jess	62
9. Joan Worthington	Tess	61
10. Steven Paxton-Hill	Bob	61

Pro-Novice—18 dogs

1. Peg Lynch	Jill	75
2. Steven Paxton-Hill	Kate	74
3. Kathryn Paxton-Hill	Ty	71
4. Mary Brighoff	Val	70
5. Maggie Chambers	Joy	68
6. Eve Marschark	Turn	67
7. Tom Lacy	Gail	67
8. Barbara Starkey	Hope	67
9. Susanne Craddock	Mick	67
10. Sherry Smith	Mick	65

Ranch—25 dogs

1. Barbara Levinson	Ivy	80
2. Nancy Ortiz	Aquilla	78
3. Tom Lacy	John	78
4. Jim Strohecker	Rudy	75
5. Linda Tesdahl	Jayce	75
6. Sharon Nunan	Fan	75
7. Sharon Nunan	Jim	71
8. Susanne Craddock	Ellie	70.5
9. Allen Lynch	Duff	70
10. Allen Lynch	Jen	69

TRIAL RESULTS



Blue Ridge Open Sheep Dog Trial White Post, Virginia, May 16 - 17, 1998

Judge: E. J. O. Evans, Wales;
Trial Manager: Ethel Conrad

FRIDAY—USBCHA Nursery -16 dogs

1. Brooks Parrott	Rush	69
2. Bruce Fogt	Reed	68
3. Linda Tesdahl	Jayce	67.5
4. Tom Lacy	John	67
5. Amanda Milliken	Grace	67
6. Linda Fogt	Cal	64

FRIDAY—Open Ranch -24 dogs

1. Beverly Lambert	Nap	72
2. Tom Wilson	Dot	71
3. Bruce Fogt	Reed	67
4. Ed Moore	Rob	66
5. Judy Mason	Maude	63.5
6. Tom Lacy	Gael	61.5

SATURDAY—Open

67 dogs went to the post. Sunny and HOT. The judge set an interesting course, with a fiendish 40-point, 4-obstacle drive, and no shed. 100 points possible.

1. Mike Canaday	Ben	88.5
2. Roy Johnson	Jim	88.5
3. Carla King	Pride	88
4. Linda Fogt	Macy	87.5
5. Merry Klimek	Tweed	86.5
6. Beverly Lambert	Pat	81
7. Roy Johnson	King	80.5
8. Linda Fogt	Meg	80
9. Mike Canaday	Robin	79.5
10. Florence Wilson	Jay	79

SUNDAY—Open

66 dogs went to the post. Sunny and warm. Another creative, indescribable and very difficult 40 point drive. 100 points possible.

1. Barbara Ligon	Roy	91
2. Alasdair MacRae	Nan	83.5
3. Carla King	Pride	83
4. David Henry	Roy	83
5. Mike Canaday	Robin	82.5
6. Cheryl Williams	Sadie	82
7. Sally Lacy	Bob	81
8. Alasdair MacRae	Cap	80.5
9. David Henry	Holly	80
10. Beverly Lambert	Pat	79.5

Mike Canaday Border Collies

"I only sell dogs I would run myself!"

- Training
- Stud Service
- Sheep for Trials
- Trial Dogs~Bought & Sold

Quality Pups Available!

Canaday's Ben/Fly (Robin daughter)
Pups born 7-15

MacRae's Nap/Canaday's Tip
Pups born 7-16



At stud~Ben

1996 USBCHA
National Champion

1996 Purina Award for the
Outstanding Herding Dog

Ben has won over 30 open
trials in both Scotland and in
the United States

Watch for Ben pups!

Mike Canaday, Meadowdale Rd. Altamont, NY 1•518•861•6049

TRIAL RESULTS



Blue Ridge Open Sheep Dog Trial White Post, Virginia, May 16 - 17, 1998

Judge: E. J. O. Evans, Wales;
Trial Manager: Ethel Conrad

FRIDAY—USBCHA Nursery -16 dogs

1. Brooks Parrott	Rush	69
2. Bruce Fogt	Reed	68
3. Linda Tesdahl	Jayce	67.5
4. Tom Lacy	John	67
5. Amanda Milliken	Grace	67
6. Linda Fogt	Cal	64

FRIDAY—Open Ranch -24 dogs

1. Beverly Lambert	Nap	72
2. Tom Wilson	Dot	71
3. Bruce Fogt	Reed	67
4. Ed Moore	Rob	66
5. Judy Mason	Maude	63.5
6. Tom Lacy	Gael	61.5

SATURDAY—Open

67 dogs went to the post. Sunny and HOT. The judge set an interesting course, with a fiendish 40-point, 4-obstacle drive, and no shed. 100 points possible.

1. Mike Canaday	Ben	88.5
2. Roy Johnson	Jim	88.5
3. Carla King	Pride	88
4. Linda Fogt	Macy	87.5
5. Merry Klimek	Tweed	86.5
6. Beverly Lambert	Pat	81
7. Roy Johnson	King	80.5
8. Linda Fogt	Meg	80
9. Mike Canaday	Robin	79.5
10. Florence Wilson	Jay	79

SUNDAY—Open

66 dogs went to the post. Sunny and warm. Another creative, indescribable and very difficult 40 point drive. 100 points possible.

1. Barbara Ligon	Roy	91
2. Alasdair MacRae	Nan	83.5
3. Carla King	Pride	83
4. David Henry	Roy	83
5. Mike Canaday	Robin	82.5
6. Cheryl Williams	Sadie	82
7. Sally Lacy	Bob	81
8. Alasdair MacRae	Cap	80.5
9. David Henry	Holly	80
10. Beverly Lambert	Pat	79.5

Mike Canaday Border Collies

"I only sell dogs I would run myself!"

- Training
- Stud Service
- Sheep for Trials
- Trial Dogs~Bought & Sold

Quality Pups Available!

Canaday's Ben/Fly (Robin daughter)
Pups born 7-15

MacRae's Nap/Canaday's Tip
Pups born 7-16



At stud~Ben

1996 USBCHA
National Champion

1996 Purina Award for the
Outstanding Herding Dog

Ben has won over 30 open
trials in both Scotland and in
the United States

Watch for Ben pups!

Mike Canaday, Meadowdale Rd. Altamont, NY 1•518•861•6049

Misty Lane Sheep Dog Trial East Conway, NH, May 31st, 1998

Judge: Michael Dathe; Trial Manager: Gabe Merrill

We got started early—about 7:30 this Sunday morning—and the “minges,” or “no-see-ums” were up and about as well and really liked us. The feelings were not returned, I’m sure.

Thanks to Roger Deschambeault for the use of his sheep for the Misty Lane Trial, and all his help throughout the day. Rain came in the afternoon and stayed, but without greatly interfering with the trial.

Thanks to all for setting out sheep and all the other helpers. To name a few: Fran Wheeler, Lynn and Roger Deschambeault, Peter VandeCar, Rick Baer, and Warren Mick: Thank You! Your help was greatly appreciated.

Novice/Novice –8 dogs

1. Lana Pettey	Austin	75
2. Carlene Eitapence	Floss	73
3. Mike Nunan	Jed	69
4. Lana Pettey	Lugh	67
5. Joanne Krause	Spice	66
6. Brenna Hunington	Spot	64
7. Bud Ames	Luke	58
8. Sue Schoen	Jim	55

Pro-Novice –19 dogs

1. Mike Canaday	Tip	79
2. Mike Canaday	Flash	78.5
3. Beverly Lambert	Tweed	77
4. Roger Deschambeault	Joe	76
5. Ed Hobart	Joy	72
6. Lin Reuther	Fan	69.5
7. Fiona Robertson	Jess	69
8. Millie Curtis	Robbie	67
9. Lana Pettey	Souix	66
10. Bruce Smart	Peg	63

Ranch –12 dogs

1. Beverly Lambert	Nap	83
2. Maria Mick	Craig	80.5
3. Warren Mick	Reggie	80
4. Carlene Eitapence	Lass	70
5. Chris Kroemmelbein	Tess	66
6. Chris Kroemmelbein	Queen	66
7. George Northrop	Kyp	65
8. Lin Reuther	Patty	64
9. Bud Ames	Sam	44
10. Fran Wheeler	Tweed	41

OPEN –27 dogs

1. Beverly Lambert	Lark	88.5
2. Mike Canaday	Robin	88
3. Mike Canaday	Ben	87
4. Warren Mick	Annie	86
5. Beverly Lambert	Pat	82
6. Maria Mick	Ken	81
7. Jean Kennedy	Max	80
8. Bruce Smart	Ken	79.5
9. Steve Wetmore	Ralph	79.5
10. Betty Levin	Kelty	78

Cape Cod Stock Dog Trial

Cape Cod, MA
June 13-14, 1998

Judge: Joe Kennedy

Trial Managers:
Sue Hobart and Sue Schoen

A huge thanks to all the volunteers and participants who literally slugged it out—for the entire weekend—amid thunderstorms, washed-out roads, and torrential down-pours.



“...just singing and dancing in the rain.”

Saturday

Novice/Novice –17 dogs

1. Kate Collins	Buddha	67
2. SueSchoen	Jim	63
3. Paul Good	Georgia	63
4. Carlene Eitapence	Floss	61
5. B. Huntington	Spot	54

Pro-Novice –21 dogs

1. Ed Hobart	Joy	72
2. Emily Yazwinski	Tarr	64
3. Carol Campion	Sam	57
4. Kathleen Hughes	Summer	54
5. Joanne Krause	Hope	54

Ranch –20 dogs

1. Warren Mick	Reggie	83
2. Beverly Lambert	Nap	81
3. Roger Deschambeault	Joe	71
4. Chris Kroemmelbein	Floss	66
5. Chris Kroemmelbein	Queen	65



Reggie

Sunday

Novice/Novice –14 dogs

1. Sue Schoen	Jim	71
2. Kate Collins	Buddha	70
3. Cheryl Burr	Tess	69
4. Carlene Eitapence	Floss	67
5. Paul Good	Georgia	65

Pro-Novice –17 dogs

1. Greg Hamm	Gaelen	74
2. Sue Schoen	Jet	72
3. Jean Kennedy	Jill	71
4. Nancy Milan	Elvis	70
5. Emily Yazwinsky	Tarr	64

Ranch –13 dogs

1. Warren Mick	Reggie	81
2. Chris Kroemmelbein	Queen	78
3. Derek Johnston	Kelly	69
4. Melissa DeMille	Bebe	60
5. Bud Ames	Sam	60

TRIAL RESULTS

Pennsylvania State Championship Sheep Dog Trial Hop Bottom, PA June 18-21, 1998

Judge: Hartford Logan
Trial Manager: Cheryl Jagger-Williams



photos
by peter
vandecar



Beautiful June sunshine enveloped the Pennsylvania State Championship Stock Dog Trials once again in 1998. The trial expanded to four days due to the immense amount of entries, especially in the novice classes for Thursday, June 18, and Friday, June 19, 1998. A record 115 dogs ran on Friday and 98 on Thursday in the four novice classes.

A mixed bag of wool dorset-montadale crosses and Katahdins owned by Cheryl and Dick Williams provided some challenging runs for the young dog-and-handler combinations. The sheep-handling crew of Rob and Lonnie Tuttle and their helpers made sure each set of sheep was quietly and carefully prepared for Tom Forrester to hold out. Louise DeMarcello had a great two days running with all three of her dogs, qualifying for the top ten each day. Only two were able to stay in the top ten however. She ended up with a first place on each day with two different dogs.

Mary Brighoff with her new business, "Pre-trial Management Services", organized all of the paperwork and entry forms prior to the trial. Thankfully done, as she was injured the day before the trial on her way to Hop Bottom, resulting in a four day hospitalization!

The open trial on Saturday and Sunday ran like clockwork, thanks in great part to the skillful and careful setting out of the sheep by the talented Tom Forrester. The church service on Sunday morning at 7:30 began a beautiful day of trialing. Saturday with a left hand drive provided some good scores as the katahdin sheep of Walt Jagger's worked through the course. Beverly Lambert's last run of the day provided a 1 point advantage to win the class over 53 other competitors.

Sunday's course with a right hand drive gave the 51 handlers and dogs quite a challenge. The maltese cross at the end of the course was a true crowd pleaser, though Warren Mick and Annie made it look easy in the early morning hours. The katahdins adroitly slipped by the panels on many runs. Jennifer McGinnis and Walt Jagger tied for first place, resulting in a runoff which Jennifer won. Walt ran as the trooper he is, with a broken leg (unknowningly at the time).

Joy Dog Food as sponsor of the trial was right on hand to provide dog food to the winners. A raffle with items such as videos, books signed by the authors-Bruce Fogt and Betty Levin-, a print by Raven O'Keefe, a subscription to the American Border Collie Magazine, dog food, etc. was held on Saturday. The First Universalist Church of Brooklyn provided a delicious chicken barbecue on Saturday and many other food items throughout the weekend. The boy scouts were right on hand to help with the food and sheep handling on Thursday and Friday.

The entire Jagger Williams families would like to express their heartfelt thanks for all of the persons who were on the frontline to help with making sure the trial ran smoothly with all of the challenges presented. You all know who you are and we thank you.

Cheryl Jagger-Williams



Rocket,
winner of
the "most
promising
young
dog"
award.

Pro/Novice on Thursday resulted in a four way runoff for first place beautifully won by Suzanne Craddock and Mick. Hal VandeCar with Rocket won the most promising young dog award chosen by Hartford Logan for the two days. Brooks Parrott won the most promising young-handler award. Kathryn Paxton-Hill had provided a hand painted plate with a lovely border collie scene for the most promising young dog.

The trial was ably judged by Hartford Logan of County Antrim, Northern Ireland for the four days. Eleanor Jagger's famous "pot-luck" dinner was served to a huge crowd on Friday night, followed by a dance with the Mark Vanko band. Walt Jagger dusted off his saxophone and played most of the night even though he had broken his leg the day before the trial.

TRIAL RESULTS

Pennsylvania State Championship Sheep Dog Trial

- continued

Saturday, June 20, 1998

OPEN - 53 dogs

Thursday, June 18th Novice/Novice - 29 dogs

1. Louise DeMarcello	Cass	79
2. Joan Worthington	Tess	78
3. Louise DeMarcello	Sally	76
4. Kathryn Paxton Hill	Pepper	73
5. Sherry Smith	Jess	73
6. Kathy Duchesne	Rose	73
7. Hal VandeCar	Rocket	72
8. Allan Lynch	Corrie	71
9. Sandy Hornung	Jet	70
10. Sandy Sanderson	Lass	69

Pro/Novice - 30 dogs (runoff for first place)

1. Suzanne Craddock	Mick	76
2. Maggie Chambers	Joy	76
3. Stephen Paxton Hill	Kate	76
4. Suzanne Craddock	Barbie	76
5. Kathryn Paxton Hill	Ty	75
6. Jennifer McGinnis	Chloe	74
7. Sue Schoen	Jet	73
8. Joyce Geier	Case	73
9. Walt Jagger	Jen	73
10. Sherry Smith	Mick	72

Ranch - 33 dogs

1. Heather Millen	Buck	86
2. Allan Lynch	McDuff	85
3. Barbara Levinson	Ivy	84
4. Walt Jagger	Moss	83
5. Bev Lambert	Nap	82
6. Bill Gregor	Willie	81
7. Jim Stroecker	Ring	77
8. Barbara Levinson	Tess	77
9. Brooks Parrott	Rush	76
10. Walt Jagger	Jim	75

USBCHA Nursery - 6 dogs

1. Brooks Parrott	Rush	81
2. Bev Lambert	Tweed	78
3. Barbara Starkey	Hope	72
4. Bruce Smart	Peg	68
5. Becky Peterson	Taff	64
6. Joyce Geier	Case	57

Overall Trial Champion
Walt Jagger and Roy (189)

Reserve Overall Champion
Mike Canaday and Ben (177)

Friday, June 19th Novice/Novice - 30 dogs (runoff for first place)

1. Louise DeMarcello	Sally	74
2. Louise DeMarcello	Cass	74
3. Sandy Hornung	Jet	73
4. Michele Higgins	Ace	73
5. Hal VandeCar	Rocket	72
6. Dave Sharp	Ribel	72
7. Elizabeth Phillips	Jacko	70
8. Joan Worthington	Tess	70
9. Sandy Hornung	Meg	69
10. Kathryn Paxton Hill	Pepper	67

Pro-Novice - 35 dogs

1. Millie Curtis	Robie	77
2. Sherry Smith	Mick	75
3. Becky Peterson	Libby	73
4. Peg Lynch	Jill	71
5. Suzanne Craddock	Mick	70
6. Peg Lynch	Pepper	70
7. Kathryn Paxton Hill	Ty	68
8. Suzanne Craddock	Barbie	67
9. Bruce Smart	Peg	66
10. Joyce Geier	Case	64

Ranch - 41 dogs

1. Bev Lambert	Nap	84
2. Cheryl Jagger Williams	Ben	83
3. Walt Jagger	Jim	78
4. Allan Lynch	McDuff	77
5. Walt Jagger	Moss	74
6. Barbara Levinson	Ivy	73
7. Merry Klimek	Ben	71
8. Warren Mick	Reggie	69
9. Polly Matzinger	Roy	67
10. Barbara Starkey	Katie	67

USBCHA Nursery - 9 dogs

1. Warren Mick	Reggie	68
2. Bruce Smart	Peg	53
3. Brooks Parrott	Rush	47
4. Joyce Geier	Case	43
5. Denise Leonard	Kate	39

Mid-Atlantic Champion Overall
Walt Jagger and Roy (189)

Reserve Champion Overall
Walt Jagger and Nan (174)

1. Bev Lambert	Lark	96
2. Cheryl J. Williams	Sadie	95
3. Mike Canaday	Ben	94
4. Walt Jagger	Nan	94
5. Sally Lacy	Bob	92
6. Carol Campion	Dell	92
7. Walt Jagger	Roy	91
8. Allan Lynch	Jen	90
9. Warren Mick	Tara	87
10. Sally Lacy	Tru	86

• **Best Gather:**
Mike Canaday & Ben

• **Best Drive:**
Walt Jagger & Nan

• **Best Pen:**
Betty Levin & Kelty

• **Best Shed:**
Polly Matzinger & Roy

Sunday June 21, 1998

OPEN - 51 dogs
(runoff for first place)

1. Jennifer McGinnis	Shep	93
2. Walt Jagger	Roy	93
3. Warren Mick	Tim	89
4. Bev Lambert	Nap	89
5. Mike Canaday	Robin	86
6. Warren Mick	Annie	84
7. Mike Canaday	Ben	83
8. Brooks Parrott	Rush	82
9. Barbara Armata	Anne	81
10. Walt Jagger	Nan	80

• **Best Gather:**
Walt Jagger & Roy

• **Best Drive:**
Gene Sheninger & Sweep

• **Best Maltese:**
Warren Mick & Annie



*On behalf of the NEBCA members
we wish Walt Jagger a speedy
recovery.*

TRIAL RESULTS

Autumn Hill Sheep Dog Trial

Union Bridge, MD

June 26-28, 1998

Judge: Hartford Logan; Trial Manager: Mary Brighoff

This was the first annual SDT for Autumn Hill Farm and Mary Brighoff. Friday and Saturday were the 3 H's, Hazy, HOT and Humid. However, they were made much more bearable by a constant breeze, clean water in the tub for the dogs, and a cooler of fruit and spring water that awaited the handlers at the barn.

Sunday dawned cool and cloudy, providing relief from the rest of the weekend—so what if there was a bit of rain in there!

Friday night dinner was a very congenial pot luck supper, with lots of wonderful homemade dishes and good company. The great supper Saturday night and the food concession all weekend was provided by the Libertytown Rec. Council.

The judge was Hartford Logan of Northern Ireland. He enjoyed the weather more than the rest of the crowd because he knew he was going home Monday to the cooler Irish weather after spending two weeks here. Hartford had the task of judging 173 runs over the weekend. Everyone found the sheep very even over the 3 days but discovered the course had its own difficulties, including a drive of almost 500 yards.

All in all, it was a hardworking, fun-filled weekend for everyone. Thanks to all the handlers who attended and a special thanks to all the volunteers and handlers who helped out - working the sheep pen, setting out sheep, exhausting sheep, scribing, posting scores and all the usual and unusual tasks it takes to run a trial.

Friday

Novice/Novice - 19 dogs

1. John Casey	Jewel	73
2. Louise DeMarcello	Sally	73
3. Louise DeMarcello	Hope	72
4. Bill Gregor	Maggie	72
5. Stephen Paxton-Hill	Bob	72
6. Doug Brewer	Reilly	70
7. Sandy Hornung	Meg	70
8. Sherry Smith	Jess	69
9. Eunice Morgan	Peggy	65
10. Sandy Hornung	Jet	64

Friday

Pro-Novice - 19 dogs

1. Tom Lacy	Rob	76
2. Sherry Smith	Mick	74
3. Mary Brighoff	Val	74
4. Allan Lynch	Corrie	67
5. Cathy Rapp	Joy	65
6. Barbara Starkey	Hope	64
7. Peg Lynch	Pepper	63
8. Suzanne Craddock	Mick	63
9. Barbara Starkey	Bessie	62
10. Cheryl J. Williams	Andy	62

Friday

Ranch - 16 dogs

1. Sharon Nunan	Jim	77
2. Barbara Starkey	Katie	75
3. Suzanne Craddock	Ellie	74
4. Barbara Levinson	Ivy	74
5. Bill Gregor	Willie	72
6. Barbara Levinson	Tess	72
7. Barry Moyer	Slick	71
8. Sharon Nunan	Fan	67
9. Merry Klimek	Ben	65
10. Mark Soper	Scott	65

Saturday - 19 dogs

1. John Casey	Jewel	76
2. Doug Brewer	Reilly	76
3. Myra Soden	Hemp	72
4. Sandy Hornung	Jet	71
5. Kathryn Paxton-Hill	Pepper	70
6. Louise DeMarcello	Cass	68
7. Eunice Morgan	Peggy	67
8. Craig Williams	Kopper	67
9. Kim Baker	Beth	67
10. Louise DeMarcello	Sally	67

Saturday - 15 dogs

1. Cheryl J. Williams	Andy	74
2. Mary Brighoff	Val	71
3. Cathy Rapp	Joy	68
4. Sherry Smith	Mick	66
5. Peg Lynch	Pepper	61
6. Allan Lynch	Corrie	60
7. David Henry	Beryl	55
8. Barbara Starkey	Hope	54
9. Stephen Paxton-Hill	Kate	53
10. Carolyn Lash	Kyle	41

Sunday - 11 dogs

1. Tom Lacy	Gail	76
2. Barbara Levinson	Ivy	76
3. Tom Lacy	Rob	73
4. Sharon Nunan	Jim	71
5. Barbara Levinson	Tess	69
6. Mark Soper	Scott	63
7. Sharon Nunan	Fan	63
8. Peg Lynch	Jill	60
9. Sandy Dempewolf	Gem	54

Champion

John Casey and Jewel

Res. Champion

Doug Brewer and Reilly

Champion

Mary Brighoff and Val

Res. Champion

Cheryl J. Williams and Andy

Champion

Barbara Levinson and Ivy

Res. Champion

Sharon Nunan and Jim

USBCA NURSERY

Friday - 5 dogs

1. Tom Lacy - John 79
2. David Henry - Beryl 77
3. Cheryl J. Williams - Andy 66
4. Barbara Starkey - Hope 46

Sunday - 5 dogs

1. David Henry - Beryl 79
2. Brooks Parrott - Rush 73
3. Barbara Starkey - Hope 73
4. Tom Lacy - John 71
5. Cheryl J. Williams - Andy 63

Champion - David Henry and Beryl
Res. Champion - Tom Lacy and John

SPECIAL AWARD

Best Young Dog:

David Henry and Beryl

TRIAL RESULTS

Autumn Hill Sheep Dog Trial - continued

Saturday OPEN - 31 dogs

1.	Tom Lacy	Juggs	95
2.	Dick Williams	Fleet	94
3.	Cheryl J. Williams	Ben	93
4.	Carla King	Taz	93
5.	Ed Moore	Zeke	91
6.	Mary Brighoff	Ron	91
7.	Tom Lacy	John	90
8.	Nathan Mooney	Jed	88
9.	David Henry	Roy	88
10.	Eve Marschark	Tea	87

SPECIAL AWARDS

Best Outwork - Nathan Mooney and Jed
Best Drive - Mary Brighoff and Ron
Best Pen - Polly Matzinger and Roy
Best Shed - Ethel Conrad and Nan

Sunday OPEN - 33 dogs

1.	Mary Brighoff	Mirk	92
2.	Mary Brighoff	Ron	92
3.	Tom Lacy	John	91
4.	Merry Klimek	Tweed	90
5.	Tom Lacy	Juggs	88
6.	Allan Lynch	Scout	87
7.	Carla King	Taz	86
8.	Dick Williams	Max	86
9.	Allan Lynch	Jen	86
10.	Eve Marschark	Tea	85

SPECIAL AWARDS

Best Outwork - Ethel Conrad and Nan
Best Drive - Cheryl Jagger-Williams and Ben
Best Maltese Cross - Brooks Parrott and Rush

*If you liked the NEBCA
Championship
Jackets ...*



*try our
3-Season Jackets.*

Water-resistant shell. Polyester fleece lining. Two Zip pockets. Available in an assortment of colors. Easy fit. S, M, L, XL. Border Collie and two sheep embroidered on the left chest with the NEBCA Border Collie Association around the design. Your name can be embroidered on the right.

*Contact Lynne Deschambeault
for more information
or to see a sample.*

(207) 452-2898



Mary Felegy
President

54 Burnside Avenue
Congers, NY 10920
Tel: (914) 268-9371
Fax: (914) 268-0083
fairgame@bestweb.net

**ATTN:
BORDER COLLIES**

Earn money in your spare time
with your handler/owner!

**Fair Game
Goose Management
Services, Inc.** (an eco-friendly
company dedicated to the safe,
humane management of suburban
Canada geese) is currently
accepting applicants for PT or FT
assistance in Rockland County, NY
and environs (20 miles north of
NYC).

Call, write, fax, or e-mail now!

MEMBERSHIP RENEWAL

The NEBCA membership year runs from January 1st to December 31st of each year, except for new members who joined after October 31st, 1998. Their renewal is not due until January 1st, 2000. Make checks payable to NEBCA and mail to: **Jean Kennedy**

575 Willow Street
West Barnstable, MA 02668

TRIAL RESULTS

Bittersweet Sheep Dog Trials

Hampton, CT

July 9-11, 1998

Judges: Becky Peterson (N/N),

Larry Campion (Pro-N, Ranch), Nathan Mooney (Open)

Trial Manager: Carol Campion

The three days of trailing in Hampton, CT went smoothly (from the trial managers point of view, that is!). Sheep and handlers may feel differently. The weather was great—low 80's and sunny—couldn't have been better for July. We had a tremendous turnout—35 dogs ran in the novice classes and 45 on the open each day.

For the first time since the farm's new ownership, the trial ran the farm flock which is a mix of Border Leicester/Cheviot ewes and their February lambs. They are used to dogs, but not often worked in small groups. Some had never been penned! They were a challenge and those doing well deserve a lot of credit.

On Friday, the young classes ran the older crossbred ewes, starting with the Novice class, then Pro-Novice, and Ranch. Becky Peterson ably judged Novice, and Larry Campion (back by popular demand) the Pro-Novice and Ranch classes. Many novice trials are held in small fenced-in areas, keeping the sheep contained so that handling errors are not as evident. Bittersweet's trial field is a 16 acre hay field and any small handling error could result in losing the sheep. This became a test and new experience for many running. The sheep could easily read a dog and thought nothing of running the 15 acres back to the holding pen, or the two acres to the exhaust if the dogs didn't cover them.

The open dogs ran on Saturday and Sunday judged by Nathan Mooney—with nursery classes split as well over these two days. Purebred Cheviots and their lambs were added for open, adding to the difficulty of the runs. The sheep needed the right pressure applied to keep them moving, but not racing. However, penning and shedding proved to be the biggest obstacle. Some tremendous work was done by a number of handlers and dogs, not getting much of a score because their sheep split, but nonetheless, moving the sheep around with some remarkable skill.



Bruce Smart and Peg during Saturday's Pro-Novice run.



Kent Kykendall, Betty Levin, and Bill

Friday

Novice/Novice - 6 dogs

1. Kate Collins	Buddha	57
2. Melissa DeMille	Max	54
3. Michelle Higgins	Ace	50
4. Cheryl Burr	Tess	45 1/2

Pro-Novice - 18 dogs

1. Becky Peterson	Libby	72
2. Cheryl Williams	Andy	71
3. Beverly Lambert	Tweed	60
4. Bruce Smart	Peg	58
5. Melissa DeMille	Stella	56
6. Denise Leonard	Kate	55
7. Joanne Krause	Hope	52
8. Carol Campion	Sam	50

Ranch - 12 dogs

1. Alasdair Macrea	Clue	85
2. Carol Campion	Roy	83
3. Greg Hamm	Gaelen	74
4. Ellen Skillings	Paige	74
5. George Northrop	Kyp	67
6. Kathy Hughes	Isabella	63
7. Barbara Starkey	Katie	60
8. Becky Peterson	Taff	52

Saturday

Novice/Novice - 6 dogs

1. Lana Pettey	Austin	67
2. Cheryl Burr	Tess	58
3. Michelle Higgins	Ace	56
4. Lana Pettey	Lugh	51
5. Joanne Krause	Spice	49
6. Melissa DeMille	Max	40

Pro-Novice - 18 dogs

1. Mike Canaday	Jess	71
2. Cheryl Williams	Andy	65
3. Emily Yazwinski	Tarr	63
4. Ed Hobart	Joy	61
5. Becky Peterson	Libby	61
6. Lana Pettey	Sioux	60
7. Bruce Smart	Peg	60
8. Carol Campion	Sam	60

Sunday

Ranch - 12 dogs

1. Carol Campion	Roy	81
2. Ellen Skillings	Paige	73
3. Barbara Starkey	Katie	70
4. George Northrop	Kyp	66
5. Gene Sheninger	Shep	65
6. Gene Sheninger	Meg	61
7. Chris Kroemmelbein	Tess	58
8. Edie Overly	Jake	48

USBCHA - qualifying dogs

Friday - 13 dogs

1. Beverly Lambert	Tweed
2. Becky Peterson	Taff
3. Cokie Hamm	Zouk

USBCHA - qualifying dogs

Saturday - 5 dogs

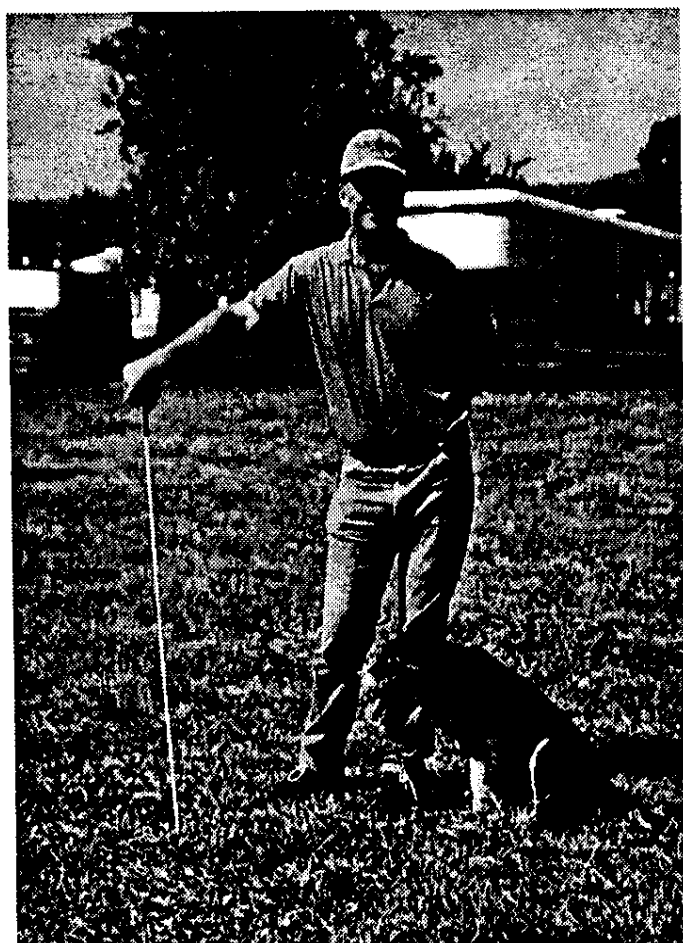
1. Cheryl Jagger-Williams	Andy
---------------------------	------

TRIAL RESULTS

Bittersweet SDT - continued

Saturday			
OPEN - 45 dogs			
1.	Alasdair Macrae	Nan	94
2.	Mike Canaday	Ben	94
3.	Kent Kuykendall	Bill	91
4.	Beverly Lambert	Pat	90
5.	Alasdair Macrae	Nap	89
6.	Warren Mick	Annie	88
7.	Ellen Skillings	Jack	86
8.	Beverly Lambert	Pat	82
9.	Bruce Smart	Ken	81
10.	Warren Mick	Reggie	81

Saturday			
OPEN - 45 dogs			
1.	Alasdair Macrae	Cap	97
2.	Carol Campion	Roy	94
3.	Betty Levin	Maddie	91
4.	Kent Kuykendall	Gyp	91
5.	Mike Canaday	Ben	89
6.	Maralyn Fowler	Craig	89
7.	Beverly Lambert	Pat	89
8.	Alasdair Macrae	Nap	86
9.	Warren Mick	Tim	86
10.	Warren Mick	Reggie	85



Alasdair Macrae and Nan

Bittersweet Champion:
Alasdair Macrae and Nan
Bittersweet Reserve Champion:
Beverly Lambert and Pat
Bittersweet "Hope" Award (for highest scoring owner-trained dog):
Warren Mick's Reggie



Saturday			
Novice/Novice - 7 dogs			
1.	Kate Collins	Buddha	66
2.	Carlene Eitapence	Floss	65
3.	Tom Leigh	Kate	62
4.	Carroll Goodwin	Bama	42

Pro-Novice - 11 dogs			
1.	Beverly Lambert	Tweed	75
2.	Mike Canaday	Jess	73
3.	Ed Hobart	Joy	55
4.	Jean Kennedy	Beth	55
5.	Kathy Hughes	Summer	50
6.	Carol Weigand	Ty	48
7.	Cokie Hamm	Zouk	45

Ranch - 6 dogs			
1.	Kathy Hughes	Isabella	67
2.	George Northrop	Kyp	63
3.	Carlene Eitapence	Lass	62

Saturday			
OPEN - 27 dogs			
1.	Kent Kuykendall	Bill	92
2.	Steve Wetmore	Ralph	84
3.	Mike Canaday	Robin	84
4.	Betty Levin	Kelty	83
5.	Mike Canaday	Smut	83
6.	Maurice MacGregor	Kate	82
7.	Sally Lacy	Tru	77
8.	Kent Kuykendall	Coon	76
9.	Lyn Deschambeault	Jolly	75
10.	Beverly Lambert	Pat	73

Kelmscott Farm Sheep Dog Trial

Camden, ME

July 18-19, 1998

Judge: E. B. Ralley

Trial Manager: Mindy Empey

Sunday			
Novice/Novice - 7 dogs			
1.	Carlene Eitapence	Floss	70
2.	Bud Ames	Luke	69
3.	Mike Nunan	Jed	68
4.	Tom Leigh	Kate	67
5.	Jay Canaday	Zac	

Pro-Novice - 11 dogs			
1.	Carol Weigand	Ty	65
2.	Beverly Lambert	Tweed	64
3.	Mike Canaday	Jess	57
4.	Ed Hobart	Joy	57
5.	Cokie Hamm	Zouk	50

Ranch - 6 dogs			
1.	Steve Wetmore	Moss	72
2.	Greg Hamm	Gaelen	45
3.	Kathy Hughes	Isabella	43



Kent Kuykendall's Bill

Sunday			
OPEN - 28 dogs			
1.	Kent Kuykendall	Bill	85
2.	Sally Lacy	Tru	81
3.	Mike Canaday	Ben	81
4.	Beverly Lambert	Lark	79
5.	Roger Deschambeault	Jack	79
6.	Lyn Deschambeault	Jolly	77
7.	George Northrop	Kyp	77
8.	Beverly Lambert	Pat	76
9.	Steve Wetmore	Ralph	75
10.	Betty Levin	Maddie	74

TRIAL RESULTS

West Branch Stock Dog Trial

Pottsgrove, PA

July 17-19, 1998

Judge: Tom Lacy; Trial Managers: Allan and Peg Lynch

Well, another year for the West Branch Stock Dog Trial. With the exception of the usual Friday evening storm, the weekend was sunny, dry, and not too warm.

Our judges, Tom Lacy and Allen Lynch, decided to have some fun: They had the nerve to drop the pen from all classes. On Friday, Novice/Novice had a chute to complete at the end of their drive. Pro-Novice and Ranch had two chutes—one just before the post and one to finish the drive. The pot-luck dinner Friday evening was terrific as usual.

On Saturday the Novice/Novice and Pro-Novice courses were identical. Open was run with four sheep. We had a Maltese cross and a split on the shed. (How many people does it take to set up a Maltese cross?)

That evening we had a barbequed lamb and ham dinner that was ... succulent.

The course was reversed on Sunday. Ranch started the day, and had a Maltese cross to complete. Open was run with three sheep and had a cross and single shed.

Our Katahdin sheep proved challenging: They worked consistently throughout the weekend but still did not shed easily.

A very special thanks to Tom Lacy—who did a great job—Joy Dog Food, the Pottsgrove Fire Company, and all our sponsors. **Thanks to everyone who made the trip and volunteered all weekend.**

Friday, July 17th

Novice/Novice - 20 dogs

1. Sandy Hornung	Jet	76
2. Louise DiMarcello	Hope	75
3. Sherry Smith	Jess	75
4. Dave Sharp	Rigel	75
5. Craig Williams	Kopper	74
6. Doug Brewer	Reilly	74
7. Kim Baker	Beth	73
8. Louise DiMarcello	Sally	71
9. Bill Gregor	Maggie	69
10. Kim Edwards	Jen	67

Pro/Novice - 13 dogs

1. Cheryl J. Williams	Andy	75
2. Mary Brighoff	Val	74
3. Peg Lynch	Pepper	68
4. Allan Lynch	Corrie	68
5. Sherry Smith	Mick	59
6. Linda Fossetta	Lizzy	59
7. Maggie Chambers	Joy	58
8. Chalmers Means	Clip	53
9. Eve Marschark	Turn	51
10. Bernie Armata	Drew	50

Ranch - 14 dogs

1. Allan Lynch	McDuff	72
2. Bill Gregor	Willie	70
3. Barbara Levinson	Ivy	68
4. Sharon Nunan	Jim	62
5. Nancy Ortiz-Sharp	Aquilla	58
6. Barbara Levinson	Tess	55
7. Chalmers Means	Bette	51
8. Eunice Morgan	Sidekick	51
9. Heather Millen	Buck	51
10. Ron McGettigan	Wilbur	50

Saturday, July 18th

Novice/Novice - 20 dogs

1. Doug Brewer	Reilly	77
2. Craig Williams	Kopper	74
3. Louise DiMarcello	Sally	73
4. George Martin	Dally	70
5. Eunice Morgan	Peggy	68
6. Dave Sharp	Rigel	67
7. Sherry Smith	Jess	66
8. Mike McGowen	Sassy	65
9. Louise DiMarcello	Hope	65
10. Lori Cunningham	Floss	63

Pro/Novice - 12 dogs

1. Cheryl J. Williams	Andy	74
2. Maggie Chambers	Joy	71
3. Sherry Smith	Mick	69
4. Mary Brighoff	Val	68
5. Allan Lynch	Corrie	63
6. Peg Lynch	Pepper	47
7. Eve Marschark	Turn	46
8. Carolyn Lash	Kyle	45
9. Linda Fossetta	Lizzy	40

Sunday, July 19th

Ranch - 15 dogs

1. Sharon Nunan	Jim	83
2. Heather Millen	Buck	76
3. Ron McGettigan	Wilbur	74
4. Sharon Nunan	Fan	70
5. Jim Strohecker	Rudy	69
6. Barbara Levinson	Ivy	67
7. Gene Sheninger	Meg	67
8. Chalmers Means	Bette	66
9. Jim Strohecker	Ring	60
10. Barbara Levinson	Tess	60

Saturday, July 18th

OPEN - 34 dogs (out of 110 points)

1. Cheryl J. Williams	Sadie	102
2. Allan Lynch	McDuff	96
3. Barbara Armata	Taff	95
4. Jeff Hoffman	Nick	91
5. Walt Jagger	Nan	88
6. Jeff Hoffman	Flash	87
7. Mary Brighoff	Mirk	86
8. Barbara Armata	Anne	83
9. Eve Marschark	Tea	82
10. Cheryl J. Williams	Ben	81

Sunday, July 19th

OPEN - 30 dogs (out of 110 points)

1. Cheryl J. Williams	Sadie	104
2. Barbara Armata	Taff	95
3. Mary Brighoff	Mirk	90
4. Cheryl J. Williams	Ben	90
5. Gene Sheninger	Gail	89
6. Mary Brighoff	Ron	86
7. Barbara Armata	Kelly	84
8. Gene Sheninger	Sweep	84
9. Nancy Ortiz-Sharp	Vega	81
10. Jeff Hoffman	Cricket	81

TRIAL RESULTS



Lennoxville International Sheep Dog Trial

Lennoxville, Quebec

July 24-26, 1998

Trial Manager: Dave Young

Saturday Novice/Novice - 10 dogs		
1. Jay Canaday	Zak	60
2. Clint Brake	Switch	59
3. Joanne Murphy	Rudy	53
4. Clint Brake	Callum	49
5. Carlene Etepance	Floss	47
6. Bud Ames	Luke	45

Saturday Ranch - 8 dogs		
1) Edie Overly	Gail	77
2) Kate Broadbent	Deck	58
3) Bud Ames	Sam	57
4) Maria Mick	Craig	55

Sunday Pro-Novice - 12 dogs		
1. Mike Canaday	Jess	74
2. Bev Lambert	Tweed	57
3. Edie Overly	Bow	53
4. Fiona Robertson	Jess	52
5. Werner Reitboeck	Sweep	51

Pro-Novice - 13 dogs		
1. Amanda Milliken	Gin	69
2. Fiona Robertson	Jess	63
3. Mike Canaday	Jess	62
4. Werner Reitboeck	Sweep	56
5. Bruce Smart	Peg	56
6. Bev Lambert	Tweed	44

Sunday Novice/Novice - 10 dogs		
1. Clint Brake	Callum	65
2. Carlene Etepance	Floss	63
3. Kate Collins	Buddah	60
4. Jay Canaday	Zak	60
5. Joanne Murphy	Rudy	45
6. Clint Brake	Switch	42

Ranch - 7 dogs		
1. Bud Ames	Sam	53*
2. Edie Overly	Gail	53*
3. Kate Broadbent	Deck	49

* Placings determined by run off

Saturday Open - 39 dogs			
1. Mark Bustard	Burl	88*	
2. Ivan Weir	Joe	88*	
3. Mike Canaday	Ben	83	
4. Bruce Smart	Ken	83	
5. Mike Canaday	Robin	82	
6. Warren Mick	Tim	76	
7. Warren Mick	Reggie	72	
8. Werner Reitboeck	Meg	71	
9. Beverly Lambert	Pat	70	
10. Warren Mick	Annie	70 (3rd dog)	
11. Amanda Milliken	Hazel	69	

* Placing determined by runoff

Sunday Open - 33 dogs		
1. Amanda Milliken	Hazel	91
2. Amanda Milliken	Eucher	90
3. Warren Mick	Annie	87
4. Mike Canaday	Smut	86
5. Mike Canaday	Ben	83
6. Beverly Lambert	Pat	82
7. Bruce Smart	Ken	80
8. Beverly Lambert	Nap	77
9. Ivan Weir	Joe	76
10. Mark Bustard	Burl	76

The 1998 Nursery Finals Site



is this year at the Sheriff's Youth Ranch in Marstons Mills on Cape Cod. Normally the home, pasture, and training facility for a number of horses, the location is nicely suited for a nursery trial.

The site has ample parking and is within a few miles from Rt.6—the Mid Cape Highway—and Rt.6A, the Old King's Highway, with its antique cottages and sea captain homes, salt marshes, and bay beaches.

After Labor Day the beaches are open to the local canine population and your dog might enjoy herding gulls or chasing waves.

Scottish Highland Games



Loon Mountain, NH

Friday, Saturday, and Sunday
September 18-20

Events ongoing throughout the weekend: Highland Game competitions
Whiskey Tasting
Food Vendors
Tartan Exhibits/Vendors
Scottish Harp Concert
and more.

Sheep Dog Trial: Friday, September 18th.

Pre-registration is recommended, as participants will need an entry pass to get into the games. Without a pass, entrants will be charged a \$10.00 fee to get onto the grounds and handlers may not be able to park near the field.

**To pre-register for the sheep dog trial,
call Lynne Deschambeault at (207) 452-2898**

For non-entrants: Tickets at the gate are \$10.00. Multiple tickets may be bought in advance for \$ 8.00.

For information about advance tickets call 1-800-358-SCOT.

ORGANIZATIONAL

NEBCA Meeting in Altamont, NY July 3rd, 1998

The NEBCA meeting was called to order at Mike Canaday's farm July 3rd, 1998 at 7:00pm by NEBCA's President Dave Young with 27 members present.

Of the 500 1999 NEBCA calendars printed, 400 have been mailed out. Lynn Deschambeault, Joe Kennedy, Denise Leonard, Warren Mick, and Clint Brake each took 100 calendars for distribution and sale to members in their area. Invoices are to be mailed to Clint and the money to Joanne Krause with a copy of the invoice submitted to Clint. \$ 2,500.00 has been paid toward the printing charge of \$ 3,000.00.

Two separate preliminary mission statement proposals were presented by Eve Marschark and Warren Mick. Once the wording is finalized, the statement will be presented at the annual meeting to be voted on.

Eve Marschark spoke concerning the Non-Profit status for NEBCA and its advantages, especially in financial savings. The cost to realize this status is roughly \$ 500.00 for paperwork, unless we can find a member to do it for the club "pro bono". The filing charges etc. will be about another \$ 500.00, therefore we look at a potential total cost of about \$ 1,000.00. Ways to pay for this followed with a general discussion on how to cut costs for NEBCA, including many suggestions for the Newsletter. The publications mailed out cost approximately \$ 14.00 per year per member. That leaves only \$ 1.00 for all other club expenses.

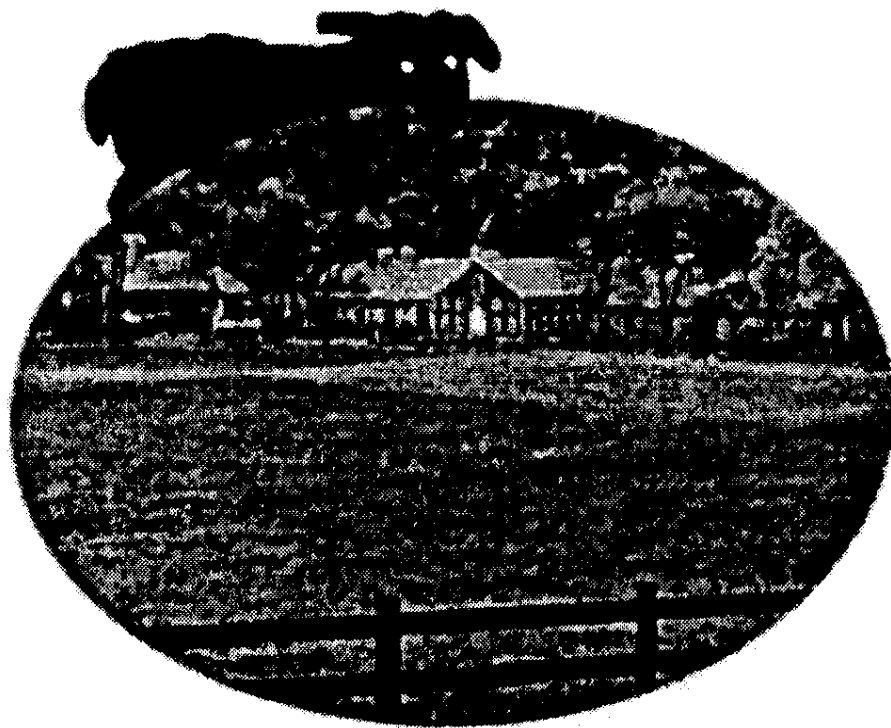
Raising the annual dues by \$ 5.00 for both individual and family membership was the consensus of those present. Discussion as to whether this could be in effect for 1999 followed, with a final decision tabled until the next meeting.

The meeting was adjourned at 7:30pm.

Respectfully submitted,
Jean Kennedy, Secretary

The 1998 Fall Foliage Site

is again the Old Chatham Shepherding Company in Chatham, New York. If you could not make it last year—either as participant or spectator—you'll never know what you missed.



"The Old Chatham shepherding Company shares the 500 acre property with the Old Chatham Inn. The original flock of 120 sheep has increased almost tenfold, making this the largest sheep dairy in America. The Farm boasts a state-of-the-art milking parlor and a new creamery and produces milk, cheese, meat, and wool products for the Inn and for retail sale."



1997 Fall Foliage



bottom: last year's spectators watching Gene Sheninger's drive.
above: Gene Sheninger penning with "Yankee".

ORGANIZATIONAL

NEBCA Meeting in Cummington

— continued from page 3

- *The dog must have placed in the top ten at three NEBCA-sanctioned open trials in the current trial season (see note). These placings may have been with a different handler.*
- *The handler must reside in the NEBCA region as defined in the bylaws.*
- *A handler may enter up to three qualified dogs (see note).*

Note: If the number of entries is more than can be accommodated in the preliminary round of competition the trials committee may limit handlers to two dogs. Conversely, if the number of entries is sufficiently low, the required number of placings may be reduced from three to two. The trial committee will make this determination approximately 1 month prior to the trial.

Trial Format

The competition will have two rounds.

Preliminary round: *The preliminary round will consist of two runs on an ISDS national style course with the best of the two scores determining the placing. The top ten scores from the preliminary round will advance to the final round. Only 2 dogs per handler may advance to the final round. If multiple scores are tied for the tenth spot, all dogs with that score will advance to the final round.*

Final Round: *If the chosen trial site permits, the final round will run a double lift course.*

The final top ten placing will be determined from the final round scores only. Final round ties for 1st and 2nd places will be broken by a run-off with the method to be determined by the judge. Ties for 3rd through 10th places will be broken by looking at the final round score breakdown and if a tie still exists the preliminary round scores will be compared.

The fall foliage trial site will again be at the Old Chatham Sheep Herding Company in Old Chatam, NY.

Melissa DeMille motioned to accept the qualifying section as proposed, seconded by Cheryl Jagger-Williams and passed by the members present.

Nursery Trial Committee:

Dave Young has assumed the chair of the Nursery Trials committee.

Two rule changes were presented for approval:

- 1) A new novice point schedule was presented and accepted as is. The new point system will be in effect at the start of 1999 open season, 9/23/98.

New Schedule of Points:

Score (out of 90)	Score (out of 80)
86 - 90 ----- 5	76 - 80 ----- 5
80 - 85 ----- 4	70 - 75 ----- 4
74 - 79 ----- 3	64 - 69 ----- 3
67 - 73 ----- 2	57 - 63 ----- 2
60 - 66 ----- 1	50 - 56 ----- 1

Beverly Lambert moved to accept the point system change, seconded by Cheryl Jagger-Williams.

A dog is eligible to run Ranch until the dog has earned 40 points and, after earning 40 points, won one Ranch class with at least 6 dogs competing, or until the dog places in the top ten of an Open trial with at least 12 dogs competing.

Melissa DeMille moved to accept the proposed changes to the Ranch class, seconded by Walt Jagger. The motion carried; one opposed. Original motion – carried.

- 2) A rule change to not allow the same dog to gain novice points with two different handlers at the same time was proposed. After much discussion the following modified proposal was accepted:

Create a category within the nursery point system for Junior Handlers—14 and under—running within the system as adults.

A young handler (under 14 years old) may run a dog in a novice class and earn points with that dog even if the same dog is currently earning novice points for another handler.

The dog, however, may only be run competitively by one handler on a given trial day. The young handler may run in a class lower than the older handler according to the same rules that apply to a dog that changes owners. (Same "drop down class rules" as currently in effect will be used.)

Handlers below the age 14: Dog can earn points in two classes but one category must be a separate "Junior Handler Class".

If the young handler and dog are clearly too competitive in a given class, the trial committee may require them to move to a higher class.

Allen Lynch moved to accept the motion, seconded by Walt Jagger

Amendment in regards to junior handlers:

Beverly Lambert motioned, seconded by Betty Levin.

Next meeting Friday night, July 3rd, 1998 at Mike's in Altamont, NY.

Motion to adjourn: Barbara Armata, seconded by Warren Mick at 6:15pm. 🐾

1998 NEBCA FALL FOLIAGE CHAMPIONSHIP TRIAL

October 10-11, 1998

Old Chatham Sheepherding Company, Old Chatham, New York

The 1998 Fall Foliage Trial will be held on October 10 & 11 at the Old Chatham Sheepherding Company in Old Chatham, New York. The trial will start at 11 AM on Saturday and 8 AM on Sunday.

The Judge this year will be Chris Smart from Selkirkshire, Scotland.

The qualifying requirements and trial format are slightly changed this year. If you are not sure your dog is qualified, contact any open trial committee member. The last day to qualify for this year is **September 22**. The entry fee will be \$30 per dog for the whole trial. Because there is no entry form, **you must notify Cheryl Jagger-Williams by October 2nd if you plan to attend.**

The trial site is great for spectators, with ample parking and camping. A buffet dinner will be held at Jackson's restaurant in Old Chatham on Saturday evening.

Warren Mick
750 Meadowdale Road,
Altamont, NY 12009
(518) 861-5854

Cheryl Jagger-Williams
RR 1, Box 1374
Hop Bottom, PA 18824
(717) 289-4733

Directions to the Fall Foliage Trial Area:

From Albany

Follow Rt 90 East toward Boston to Exit B2 (Taconic Parkway). Immediately after tollboth (0.2m) take Exit for Rt 295. Turn left at the end of the exit ramp and follow the signs for Rt 295. Turn left onto Rt 295 East and travel approximately 1m into East Chatham (see below).

From Boston

Follow Rt 90 West into New York to Exit B2 (Taconic Parkway). Immediately after tollboth (0.2m) take Exit for Rt 295. Turn left at the end of the exit ramp and follow the signs for Rt 295. Turn left onto Rt 295 East and travel approximately 1m into East Chatham (see below).

From New York City

Take Taconic Parkway North to Exit for Rt 295 (last exit before end of the Parkway). Turn left at the end of the exit ramp and at the next intersection, turn right onto Rt 295 East. Follow 295 East 2.5m into East Chatham (see below).

From East Chatham

Turn left at the sign for Old Chatham onto the Albany Turnpike and follow 3m into the center of Old Chatham. From the village center, turn left onto Rt 13 (after General Store) and follow for 1m to Shaker Museum Rd, where you turn right. The trial field is on the left, about 1.5m up Shaker Museum Rd (appr. 1/2m past the Inn). Parking/Camping is on the left just past the trial field.

Equestrian Artist looks at Border Collies




Alice Allen's "Cooperlane Kit" by Heidi Osgood

Heidi Osgood, one of the finest animal painters in the country, devoted herself to full-time pursuit of animal art after a serious injury brought her successful path as an equestrian to a sudden end.

This talented artist lives in New Hampshire and divides her time between her animals, her photo-graphy, and her magic pencils.

Heidi Osgood's most recent accomplishments include:

- Feature Artist for the cover of "The Chronicle of The Horse",
- Chosen by "The American Academy of Equine Art" for their showcase at the "International Museum of the Horse" in Lexington, KY,
- Selected by "The Harness Tracks of America" for their annual auction,
- Accepted as a member of "The Horse Artist Association", and
- Named by Timothy Davidson as the feature artist for the November/December 1997 USCTA newsletter "Horses in Art".

We thought readers would enjoy Heidi's drawing of the Border Collie above. 

1998 NEBCA Nursery Finals

Participants will compete in the class for which they have points. If you have poited out of N/N (40 pts.) and are now competing in Pro-N, but do not have any points in Pro-N, then you would compete in N/N. If you do have points in Pro-N, then Pro-N would be the class of competition. The N/N driving rule (over 30 pts.) will apply.

Participants will have three runs over the two days, with placings determined by the combined total of the two best scores. Scores achieved in the NEBCA Nursery Finals *do not* earn points.

Classes will begin at 8:00 AM. Novice handlers meeting at 7.45 AM.

Eligibility:	NEBCA Members
Entry Fee:	\$20.00 per dog per class - 3 runs per entry
Sheep:	Provided by Mike Canaday
Entry Deadline:	September 5, 1998
Awards:	Awards will be given to 10th place
Food:	Catered dinner \$6.00. Bring dessert to share. Please include dinner fee with entry.

The Nursery Trials Commitee would appreciate volunteers to help with various duties at the trial. Those who would like to help out, please call Joe Kennedy at (508) 362-3005.

NEBCA Nursery Committee

Dave Young - chair

Barbara Armata

George Northrop

Joe Kennedy

Bruce Smart

**Dodge is
Ram Tough.**



*Best Wishes
to the Participants in the
1998 NEBCA
Nursery Finals.*

CENTRAL CAPE DODGE

600 Yarmouth Road
1-800-585-8424

America's Truck Stop  **The New Dodge**

NEBCA NURSERY CHAMPIONSHIP

September 26-27, 1998
SHERIFF'S YOUTH RANCH
Marstons Mills, Massachusetts



sponsored by
**CENTRAL CAPE
DODGE**

600 Yarmouth Road
Hyannis, MA 02601

OFFICIAL ENTRY FORM

Novice/Novice • Pro-Novice • Ranch

Judge: J. P. LaLonde

Trial Manager: Joe Kennedy

575 Willow Street, West Barnstable, MA 02668
(508) 362-3005 e-mail: jkennedy@capecod.net

Handler's Name _____

Address _____

City _____ State _____ Zip _____

Phone No. (Day) _____ (Evening) _____

Dog's Name _____	N/N	<input type="checkbox"/>	Pro-N	<input type="checkbox"/>	Ranch	<input type="checkbox"/>
Dog's Name _____	N/N	<input type="checkbox"/>	Pro-N	<input type="checkbox"/>	Ranch	<input type="checkbox"/>
Dog's Name _____	N/N	<input type="checkbox"/>	Pro-N	<input type="checkbox"/>	Ranch	<input type="checkbox"/>

Attending the "Ham and Bean" dinner Saturday at the
West Barnstable Fire Station
(appr. 2m from Sheriff's Youth Ranch)

_____ Yes _____ No _____ Number of people

(\$6.00 per person including sodas. Add dinner fee to entry
check.)

Camping available, but no hookups.

Entry Fees: All classes: \$20.00 per dog
per class. Make Checks Payable to NEBCA

Directions: From Rt 495 South or Rt 3 South, take Route 6 East (Hyannis). Stay on Rt.6 till Exit 5 (Rt. 149E). On Rt. 149, stay left at fork (0.2m road splits, follow "Truck Route"). Drive appr. 1.2m and turn right at first intersection (you'll see the field before your turn on your right).

DISCLAIMER - please sign:

In consideration of the acceptance of this entry, I hereby, for myself, my heirs, executors, and administrators, wave and release any and all rights and claims I may have to damages against the owner of the grounds on which the trial is held, as well as all persons sponsoring or participating, for any injuries which may be suffered by me or my dog during this gathering and trials. Livestock injured during my participation will be paid for by the participant.

Date _____ Signature _____

If you do Border
Collie Rescue or
wish to, please
join the North



**American Border
Collie Rescue Network
(NABCRN)**

As our name implies, we are
a resource network and nation-
wide (US and Canada) support
system for Border Collie Rescue
people. We operate without
profit and independent of any
breed organizations. For infor-
mation, the NABCRN List, or
to be listed, phone or write:

**NABCRN, Box 843,
Ithaca, NY 14851 USA
(607) 659-5868**

**Border Collie
Rescue Services:**

Sharon Nunan(PA)

3329 Foulk Road
Boothwyn, PA 19061
(610) 497-4378 home
(215) 863-4586 work

...

Nancy Cox Starkey (MD)

12985 Colonial Drive
Mt. Airy, MD 21771
(301) 253-4732

...

Mary Ann O'Grady (CT)

16 Corrigan Lane
Greenwich, CT 06831-2904
(203) 622-3031

Standing at Stud: Imp. "Craig"



Finalist in Scottish Nursery Finals,
Texas Triple Crown Winner (open ranch),
stylish, keen, all around quality dog,
super disposition.

Inquiries:

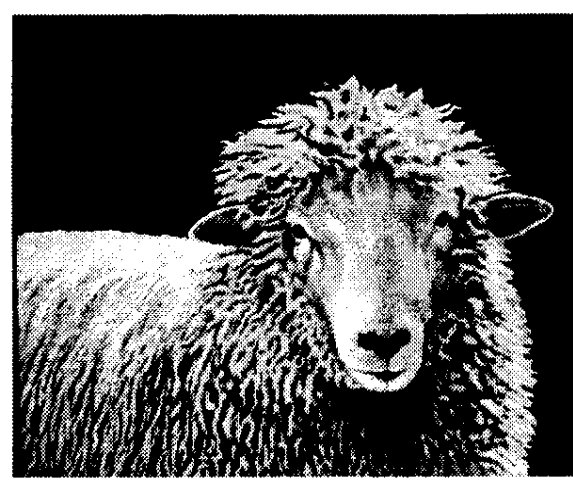
Maria Mick (518) 861-5854

Classified

Sheep Portraits



*Painted in the style of the old
masters in oil & egg tempera on
canvas or linen. Monochromatic
sepia tone with lifelike vividness.
From your photo.*



Complete with gold frame. Image size 14" x 18"
or 16" x 20". Information: Walter Carleton 508.240.1867

**For Sale:
Registered Cheviot Ram**

4 YEARS OLD - STYLISH- SOUND
PROVEN - MILD NATURED
SIRE OF BITTERSWEET LAMBS

Inquiries:

Carol Campion (860) 455-9416

**Puppies Available Now
and Another Litter
due in October.**

Inquiries:

**Beverly Lambert
(860) 742-5300**

United Farm & Pet Service, Inc.

(formerly Barnstable County Supply)

**NOW
OPEN!
Newly
Renovated**

**Foods & Supplies for
DOGS • CATS • WILD BIRDS •
SMALL ANIMALS
LIVESTOCK FEED & TACK
HAY • SHAVINGS**

**We Feature:
ALL LINES
OF PET FOODS**

**OPEN: Mon.-Fri. 8-6
Sat., 8-5 • Sun. 10-4**



48 Lombard Ave. West Barnstable • 362-3201

more Classified

SHEEP FENCING *Premiere Electric Fencing*

electronet • fence-energizers
(chargers)

**Will deliver to trials
or ship UPS to your door.**

**Expert Consultation
and Fencing Supplies**

**Bill and Lin Reuther
(802) 483-9321**

FOR SALE: ONE YEAR OLD BORDER COLLIE MALE

Due to a rare, debilitating medical condition in our daughter, we are looking with great regret and sadness for a good home to place Jennifer's dog Fly.

At this time, Jennifer can barely walk on uneven ground or climb stairs because her knee caps pop out of joint, causing unbearable pain. At this time she cannot even walk her dog on a leash without putting herself at risk of serious, possibly permanent damage.

Jennifer faces her fourth knee operation in Boston this week and following that, several month of intense rehabilitation. Due to these circumstances, it is impossible for us to give Fly the needed work-out and attention.

Fly is a one year old, intact male, great temperament, and very anxious to work sheep or start trialling. Out of Beverly Lambert's Tammy, with a strong Kuykendall blood line. All shots and health checks up-to-date. \$400.00.

**Please contact the
Gehly Family, Windham, NH,
at
(603) 893-2795**

NEBCA HIGH POINTS Updated: 08/10/1998

*** Includes all trials up to Lenoxville (Kingston results not reported)

For a brake-down of numbers of trials attended, refer to

NEBCA's web page: <http://www.nebca.cornell.edu/>

or call (508) 240-1867 for a complete print-out.

handler	dog	total points	no.of trials
1. MIKE CANADAY	BEN	505	12
2. MIKE CANADAY	ROBIN	298	9
3. WARREN MICK	TIM	292	8
4. BEVERLY LAMBERT	LARK	268	7
5. BEVERLY LAMBERT	PAT	236	8
6. AMANDA MILLIKEN	HAZEL	215	5
7. BEVERLY LAMBERT	NAP	212	5
8. WARREN MICK	ANNIE	209	6
9. AMANDA MILLIKEN	EUCHER	199	4
10. WARREN MICK	TARA	196	4
11. BRUCE SMART	KEN	190	6
12. BARBARA ARMATA	ANNE	176	4
13. MIKE CANADAY	SMUT	162	4
14. MIKE CANADAY	KEN	149	4
15. WALT JAGGER	NAN	143	4
16. BARBARA ARMATA	TAFF	139	4
17. CHERYL J. WILLIAMS	SADIE	134	4
18. WALT JAGGER	ROY	134	3
19. BETTY LEVIN	MADDIE	119	5
20. JEAN KENNEDY	MAX	116	4
21. AMANDA MILLIKEN	GRACE	105	2
22. WARREN MICK	REGGIE	102	3
23. ROGER DESCHAMBEAULT	JACK	101	4
24. BETTY LEVIN	KELTY	92	4
25. SALLY LACY	TRU	89	3
26. WERNER REITBOECK	MEG	87	2
27. CAROL CAMPION	DELL	85	2
28. EVE MARSCHARK	TEA	80	2
29. GENE SHENINGER	SWEEP	74	2
30. GABE MERRILL	MEG	72	3
31. LYNN DESCHAMBEAULT	JOLLY	67	3
32. STEVE WETMORE	RALPH	62	3
33. MARK BUSTARD	BURL	61	2
34. BRUCE SMART	DYNA	60	2
35. CHRIS KROEMMELBEIN	QUEEN	54	1
36. CHERYL J. WILLIAMS	NELL	52	1
37. MARIA MICK	KEN	51	2
38. CHERYL J. WILLIAMS	BEN	50	2
39. SALLY LACY	BOB	48	1
40. ALLEN LYNCH	JEN	45	1
41. BROOKS PARROTT	RUSH	43	1
42. CAROL CAMPION	ROY	43	1
43. BROOKS PARROTT	SKYE	39	1
44. ELLEN SKILLINGS	JACK	38	1
45. ALLEN LYNCH	MCDUFF	32	1
46. MICHAEL DATHE	COBB	28	1
47. CHERYL J. WILLIAMS	SLIP	26	1
48. ROGER DESCHAMBEAULT	LASSIE	26	1
49. GENE SHENINGER	GAIL	25	1
50. BETTY LEVIN	TAY	25	1
51. LYNN DESCHAMBEAULT	PIP	24	1
52. BARBARA ARMATA	KELLY	23	1
53. STEVE WETMORE	KEEGAN	22	1
54. NANCY ORTIZ-SHARP	VEGA	21	1
55. GEORGE NOTHRUP	KYP	21	1
56. MAURICE MCGREGOR	KATE	21	1
57. ROGER DESCHAMBEAULT	SUE II	19	1
58. DAVE YOUNG	BEN	18	1

Classified

MERLYNN KENNELS



Border Collies and Kathadin Hair Sheep

Merle and black and white puppies;
occasionally started dogs.
All breeding stock Penn Hip, OFA
certified and eye checked. Proven
producers of trial and obedience
winners.

*Kathadin Hair Sheep originated in
Maine; excellent for working dogs; no
shearing, no tail-docking necessary.*

Lynne Deschambeault

Merlynn Kennels, RR 1, Box 897B
Denmark, ME 04022-9607
(207) 452-2898

Registered Border Collies

Stud service, puppies, started dogs
from proven, working bloodlines!
Breeding and guaranteeing
satisfaction of versatile,
working Border Collies since 1973!

Lacy's Border Collies

Tom and Karen Lacy

6535 Barksdale Road
Richmond, VA 23231
(804) 226-4338

Border Collie Training Services Available:

Take advantage of lots of sheep
and a large variety
of working areas.

Lessons and started dogs
available. New covered runs.
Handling Border Collies
for 15 years.

Barbara Leverett

1512 Burrell Road
St. Johnsville, NY 13452
(518) 568-2833

Custom Border Collie Training Services Available

Private lessons, clinics,
and exhibitions.
Pups through started dogs available.

Cheryl Jagger Williams

RR 1, PO Box 1374
Hop Bottom, PA 18824
(717) 289-4733

Border Collie Books

Reprint of Scottish classic
Sheep Dogs and Their Masters
by J. H. McCulloch (\$15).

Also three volumes of true working
dog stories from Australia (\$14 each).
Shipping \$1.50 for one or more.
Old books for sale occasionally.

D. Woessner

188 Flat Hill Rd, Lunenburg,
MA 01462
(tofteast@ma.ultranet.com)

Hoop & Becky Peterson are now
distributors of

Ration Maker Premix

one of the leading sheep mineral
products.

We would love to consult with
sheep producers to evaluate your
sheep mineral needs.

Orchard Valley Farm

(413) 624-5562

••••• PRE-TRIAL ••••• MANAGEMENT SERVICES

New Solution for Paperwork Woes.

Pre-Trial Management Services
receives and records entries,
provides the trial manager with
finished running orders—
on boards and handout sheets
for handlers, score sheets for the
judge—and a final accounting
along with a single check.
The service can accommodate
any trial, and provides added
value preparing entry forms,
press releases, programs, score
keepers, etc.

•••••

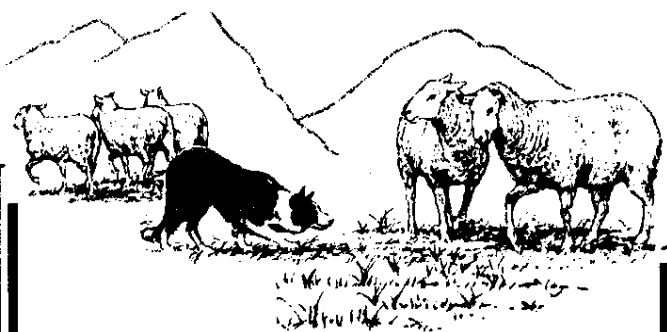
For more information call or write:
Pre-Trial Management Services
9512 Bessie Clemson Road
Union Bridge, MD 21791
(301) 898-1132

Standing at Stud: "Shim"

2 1/2 year old son of Milliken's Boy
(imp) and Hazel. Powerful sheep and
cattle dog. Both hips and eyes clear.

Contact Dave Young at:

(819) 889-3278



THE WORKING BORDER COLLIE MAGAZINE

14933 Kirkwood Road

(Dept CT)

Sidney, Ohio 45365

(937) 492-2215

Training Articles

Veterinary Column

Livestock Guard Dog Articles

Trial & Clinic Dates

Breeder's Directory

Feature Articles

*Today's magazine for the
working Border Collie*

US Funds only

\$ 30.00 yearly/US

\$ 40.00 yearly/ Canada

Great Puppies Available

- Ready by End of August -
The BEST costs no more.

- Out of Mike Canaday's Ben—National Champion and '96 Purina Herding Champion—and Fly, a talented, biddable Pro-Novice dog with great temperament (daughter of Mike Canaday's Robin—twice NEBCA's High Point Champion).
- Out of Alasdair Macrae's Nap and Mike's Tip. Tip is a very nice, easy to work nursery dog. OFA/eyes clear.

Inquiries:

Mike Canaday (518) 861-6049

e-mail: CanadayBC@aol.com

Available for Stud: Imported "Ken"

Powerful, yet biddable. Has placed in
Northeast and won trials in Texas.
Pedigree back to Templeton's "Roy",
Dalziel's "Dryden Joe", and C. Jones'
"Bwlch Taft". OFA good, eyes clear.

Inquiries:

Maria Mick (518) 861-5854

Breeders Directory*

This listing of breeders of Border Collies is for informational purposes only and in no way represents an endorsement of these breeders by the Northeast Border Collie Association. When making inquiries for purchasing a pup, NEBCA strongly recommends selecting from sound, proven, working stock. We suggest you see both parents work. If you are not able to see the parents working at the farm, do attend the trials and see them working there. Watch for trial results and seek the advice of experienced handlers. **Not all breeders listed here are handlers.*

Clint & Linda Brake
Tommy Hawke Farm
76 Valhalla Road
Hillsboro, NH 03244
(603) 478-3560

Carol & Larry Campion
Bittersweet Farm
109 Hammond Hill Rd.
Hampton, CT 06247
(860) 455-9416

Michael & Pat Canaday
889 Meadowdale Road
Altamont, NY 12009
(518) 861-6049

Gwen Cassel
O'Brae Border Collies
PO Box 44
Sherburne, NY 12009
(315) 653-7764

Richard M. Cody Sr.
Cody Farms
363 Old Stage Rd. R.D.#2
Groton, NY 13073
(607) 898-3812

Kate Collins & George Northrop
Aurora Ranch
PO Box 119, Taft Hill Road
Royalston, MA
(508) 249-4407

Lynn Deschambeault
Merlynn Kennels
RR1, Box 897B
Denmark, ME 04022-9607
(207) 452-2898

Roger Deschambeault
Nearfield Farm
2440 East Conway Rd.
Center Conway, NH 03813
(603) 939-2255

Edgar Gould
Cooperlane Farm
Shelburne Falls, MA 01370
(413) 625-6496

Walt & Eleanor Jagger
Sheepy Hollow Farm
PO Box 233
Hop Bottom, PA 18824
(717) 289-4663

Joseph & Jean Kennedy
Borderline Farm
575 Willow Street
W. Barnstable, MA 02668
(508) 362-3005

Chris & Sue Kroemmelbein
Lilly Hill Farm
156 Gallmeier Road
Milford, NJ 08848
(908) 996-6163 or 996-3339
Voicemail: (908) 935-8748

Sally M. Lacy
Keswick Farm
PO Box 487
Gap Mountain Rd.
Fitzwilliam, NH 03447
(603) 242-3017

Beverly Lambert &
Douglas McDonough
280 Hebron Road
Andover, CT 06232
(860) 742-5300

Janet Larson
76 Lee Hook Road
Lee, NH 03824
(603) 659-7046

Barbara Leverett
1512 Burrell Road
St. Johnsville, NY 13452
(518) 568-2833

Betty Levin
16 Old Winter Street
Lincoln, MA 01773
(781) 259-8799

Allen & Margaret Lynch
RR2, Box 168
Turbotville, PA 17772
(717) 649-6212

Eve & Len Marschark
Ivyrose Farm
PO Box 397
3118 Farm School Road
Bedminster, PA 18910
(215) 795-2023

Alex McKinven
Cessnock Farm
RR 1, 26 University Road
North Hatley
Quebec JOB 2CO
Canada
(819) 842-2975

Gabrielle Merrill
Misty Lane Border Collies
RFD 1, PO Box 20
Brownfield, ME 04010
(207) 935-2520

Maria & Warren Mick
750 Meadowdale Road
Altamont, NY 12009
(518) 861-5854

Dave & Betty Murray
RR 1, PO Box 628
W.Charlestown, VT 05872
(802) 895-4154

Becky & Hoop Peterson
Orchard Valley Farm
41 Bell Road
Leyden, MA 01337
(413) 624-5562

Gene & Lynne Sheninger
Wayside Farm
332 Split Rock Road
Boonton, NJ 07005
(973) 299-9785

Ellen Skillings
10 Purington Lane
Colrain, MA 01340
(413) 624-0271

Steve Wetmore &
Sara Root
Spring Valley Farm
PO Box 54
Strafford, VT 05072
(802) 765-4466

Richard Williams &
Cheryl Jagger Williams
Culleymont
RR 1, PO Box 1374
Hop Bottom, PA 18824
(717) 289-4733

The Breeders Directory: Listings \$ 20.00 yearly.
Renewable each January

NEBCA News

28 Greymoor Way
Orleans, MA 02653

Warren & Maria Mick
750 Meadowdale Road
Altamont, NY 12009

12/98

FF

