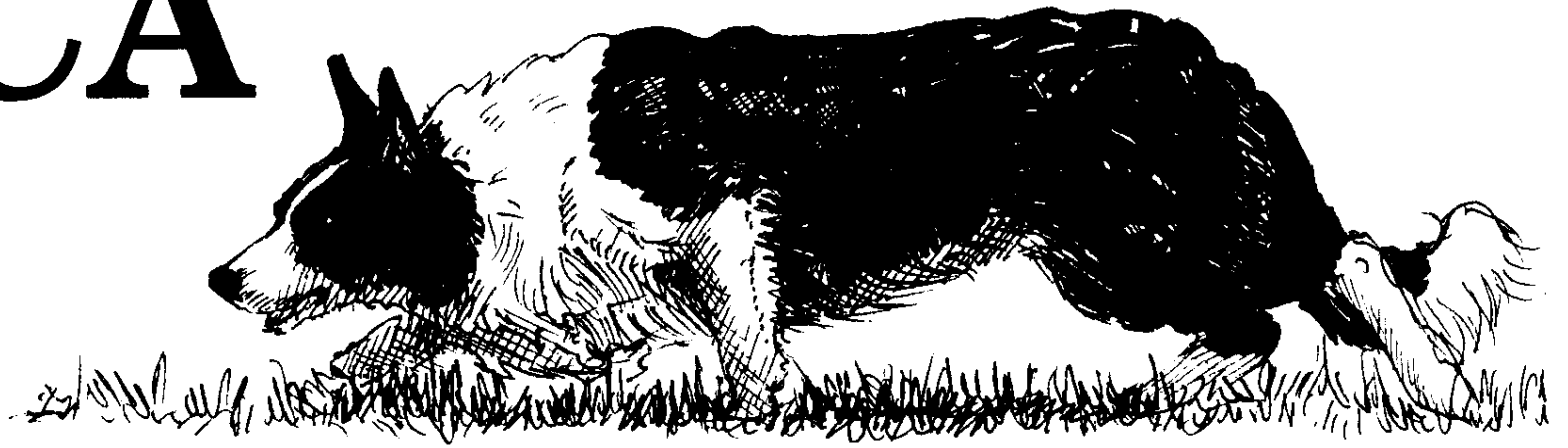


NEBCA

News



OCTOBER 1993

AN OFFICIAL PUBLICATION OF THE NORTHEAST BORDER COLLIE ASSOCIATION

SUPPLEMENT

© 1993 NEBCA News, Boonton, NJ 07005



Season's Greetings



New Jersey State Sheep Dog Trial At Fosterfields, Morristown, NJ September 4-6, 1993 Judge: Betty Boudreau

by Gene Sheninger



The Winners: Eve Marschark & Spin, Cheryl Jagger Williams & Nell & Kim, Betty Boudreau, Judge, Becky Peterson & Fly, Mike Canaday & Jill, Dick Williams & Jess & Kate, Walt Jagger & Queen.

Photo by Linda Fossetta

What is it about a sheepdog trial that draws a spectator crowd? We who spend most of our spring, summer, and fall weekends at trials know what draws us. We like the thrill of the competition, the camaraderie with the other competitors and their families, a chance to get away from our daily lives to live in a hayfield for a weekend. We watch the runs of others; NO, we STUDY the runs of the other competitors. We want to know if there are any terrain features that will cause our dog problems on the outrun; we want to know how the sheep are

lifting, and how are they coming on the fetch. What will they do as they start that first leg of the drive; and where is that blasted line on the crossdrive? What do we have to watch for at the pen? How do they react at the shed?

We can all, with a little consideration, determine what it is that continues to draw us out to a sheepdog trial. But what is it that draws spectators? They know no one out there on the field, they need not study the actions of the sheep. They seem to only come to watch our dogs in action.

continued page 9

The Keystone State Sheep Dog Trials Bucks County Horse Park, Revere, PA September 25-26, 1993

by Eve Marschark, Trial Manager

Each year seems to have proved to be a little different with our trial. This one was not an exception. Since the main function of the Bucks County Horse Park is for horses, specifically polo, and the field we usually run on had to be rested (to let the grass grow in between polo matches), we were offered a grand opportunity to use their Olympic-sized field. It was a fourteen acre, flat expanse with just enough of a rise two-thirds of the way up to totally block any view of the holding pen and sheep.

Sheep were set out well down from the pen and the dog had to really search to find his flock. There is a private airstrip along-side of the field and a few young dogs mistook the parked planes for their sheep. For added excitement, a plane took off over-head during one run!

The sheep used were a familiar flock of uniform, easily handled sheep trucked down from New York (a generous offer by Mike Canaday). He also has a flock of Barbadoes which we would have liked to have used, but they leave home when they

are not fenced in (the trial field was not fenced except for the holding pen area and the crowd area). When we first saw the field, we were concerned that it might be a bit boring. So, instead of a pen on Saturday, we used a Maltese Cross. And collared sheep! Sunday, instead of the cross, we did a ramp and pen, and again collared sheep, who by now really didn't want to be shed! The field and sheep proved to be plenty challenging.

Joy Dog Food donated prizes for all classes, first through tenth place. Iams gave coupons for free food and prizes as well. Overall about 65 dogs ran each day and the nursery classes saw a major improvement in most runs the second day. Again this year, we had a great crowd of people, many smiles and a good time.

So many folks pitched in to help. Bruce Fogt, our Judge, was most inventive in his course set-up. He demonstrated his usual quality, consistent judging throughout the weekend. Barbara Means was scorekeeper for most of the time; Sue Smith kept things moving posting scores, checking scores, listing running orders, and setting

continued page 8

EDITORS' NOTES

We MUST start off this column with a lot of THANK YOU's. Thank you to all of our friends who sent or called in their condolences. Gene lost his Mom and his dog, Robin, all in the same week. While in PA arranging for his Mom's funeral, Robin took off. He was hit by a car trying to find his way back.

It always amazes us how the Border Collie Grapevine works. There was no public announcement that we had suffered another tragedy in our lives, yet our Border Collie friends knew, and they came out to console us. Thank you all.

In this month's issue, you will read the last installment of Beverly Lambert's articles on Dan. While writing it, she had already decided that she had taken this series as far as she

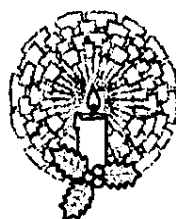
could. However, more devastating is the fact that she lost Dan, a couple of weeks after we lost Robin. Reread all of the Dan articles, and you will notice how much of ourselves we pour into the development of our dogs. Then you will see why we feel such great pain over losing them prematurely. Our hearts go out to you, Beverly.

In the next issue, we will be publishing the Breeders' Guidelines and the Dog Buyers' Guidelines, published by the Responsible Breeding Committee; this, in anticipation of the Annual Meeting on January 29, 1994. This year's annual meeting is being held at Mike Canaday's farm, and we will have further information in our next and final issue. The last time we talked to Mike, he was thinking of having a sled-dog clinic on the Sunday following the meeting. We will get confirmation

and further details from Mike for the next issue.

Also in the next issue will be more trial results and the Championship Trial results that didn't get into this issue due to space and time constraints.

FOR WHAT IT'S WORTH
-- We saw an A&E special on DOGS the other night. They showed a champion (AKC) Bulldog bitch that was cleaning up at all of the major shows (AKC). Then they showed her delivering her pups -- by Caesarian Section. It seems that the modern breeders are looking for a Bulldog with a big head, big shoulders and small hips. They have bred OUT this dog's ability to have a litter born naturally.



* Officers and Board of Director members will take turns producing articles for the Newsletter.

All Officers and Board of Directors are urged to give Steve Wetmore or Michael Dathe their input regarding the Hip Dysplasia Committee so the final draft may be produced for the NEBCA membership.

The Board of Directors is researching the direction NEBCA is taking regarding the Border Collie. It is a key issue and members are encouraged to speak to the Board of Directors or Officers with any thoughts they have on this matter.

Walt motioned to adjourn and Barbara Means seconded. Next meeting to be held at the Fall Foliage Trial.

Respectfully submitted,
Kathy Deschambeault
NEBCA Secretary

With our best wishes for a great holiday!

Gene & Lynne Sheninger

Minutes of Meeting - October 2, 1993, East Conway, NH

The meeting was called to order by President Dick Williams following the NH State Championship Trial at Kathy & Roger Deschambeault's farm. Dick announced the Annual Meeting site will be in Albany, NY. This meeting is usually held in January and all NEBCA members are welcome to attend, cast their votes, join committees, etc. . . Details to be announced in a later newsletter.

A brief discussion followed regarding the Fall Foliage Championship to be held in Carlisle, PA, October 9 and 10. Each dog will have three runs and take the two best scores for the overall standings. Dick also mentioned the third run will have something different, presenting a bit more challenge such as a reverse drive or Maltese Cross. The Trials Committee Members present will set up the course.

Steve Wetmore made a motion to have the Trials Committee take full responsibility for the Fall Foliage Championship plans as of January 1, 1994. Dick seconded and the motion passed.

NEBCA changes as of January 1, 1994:

* Trials Committee: Becky Peterson will step down after serving many active years on this committee. The position of Chairperson for the Trials Committee is open.

* Editors Gene & Lynne Sheninger are resigning. They were recognized for the exceptional job they did in producing the NEBCA Newsletter. Carol Campion volunteered to take over the position of Editor.

NEBCA News 213 Split Rock Road Boonton, NJ 07005		
EDITORS		
Gene & Lynne Sheninger (201)299-9785		
NEBCA OFFICERS		
President:		
Dick Williams	(717)289-4733	
Vice President:		
Steve Wetmore	(802)765-4466	
Secretary:		
Kathy Deschambeault	(603)939-2255	
Treasurer:		
Barbara Armata	(518)875-6471	
1165 Esperance Road Esperance, NY 12066		
Trials Committee Chairperson:		
Becky Peterson	(413)624-5562	
Bell Rd. Box 395 Leyden, MA 01337		
Nursery Trials Committee		
Chairperson:		
Eve Marschark	(215)795-2023	
Farm School Rd. Bedminster, PA 18910		
NEBCA News is published quarterly as the official publication of the Northeast Border Collie Association. Four issues are published: March 1, June 1, September 1 & December 1. Three supplements are issued during the trialing months. Subscription is by membership to NEBCA. Annual membership dues are \$15.00 per individual or \$20.00 per farm. To join, send your name, address and dues to Kathy Deschambeault, 2440 East Conway Rd., Ctr. Conway, NH 03813. Make checks payable to NEBCA.		
DISPLAY ADVERTISING		
Prices are for camera ready ads. Display Advertising will only appear in the 4 quarterly issues:		
	Single Issues	1 year (4 issues)
Business Card (2" x 3 1/2")	\$15	\$50
1/4 Page	\$35	\$100
1/2 Page	\$50	\$150
Full Page	\$75	\$225
non-members add 20%		
If choosing the yearly price, ad may not change for the entire four issues without an additional fee.		

Rules Versus Guidelines

by Bruce Smart

Many OBCC members are also members of NEBCA, and most of our Open trials also count for NEBCA points. There is little doubt that NEBCA has played an important role in providing trialing experience to many OBCC members and still generates the numbers needed to support the OBCC trial schedule. The links between the two organisations are longstanding and close. However, as the OBCC membership and trial schedule have progressed, it has become clear that there are differences of practice and philosophy across the border.

It has always been the case that the OBCC did not support NEBCA's nursery rules for promotion or for the definition of classes (the Ranch class has only rarely been offered in Ontario). In Ontario a dog can remain in Nursery virtually forever, whereas in NEBCA it will be forced up eventually if it has any degree of success.

NEBCA has many "arena" trials on its list, whereas the OBCC members have voted for rules against them. Similarly with judges, as Gene Sheninger recently said in NEBCA News, they provide a list of suggested judges but a trial manager has total discretion. In the OBCC the Trials Committee must approve judges.

The trend in the OBCC has been to tighten up rules and to

reduce the area of discretion left to trial managers. To ascribe motivations for this change would be speculative, but some possibilities come to mind; top handlers who want competition maintained at the highest North-American standard, other handlers who want no 'cheap' championship points at any level; and some people may see clear rules as a way of reducing controversy.

This difference in philosophy between recommendation and prescription is, perhaps, one of the differences between Canadian and American society. Canada is much more inclined to regulate for the common good than the United States - our laws only allow one animal registry for each breed, we legislate gun control, we have long had universal medicare. Many of our neighbours to the south believe that by protecting individual rights and freedoms they are promoting the good of the whole society. Perhaps NEBCA's guidelines and OBCC rules reflect fundamental differences in our societies. I see no need to remove those differences, and I hope that members of NEBCA and the OBCC can continue to enjoy their mutually beneficial relationship for many more years.

As we say in Quebec, "Vive la difference."

Reprinted with the permission of the author and the Ontario Border Collie Club.



**NEBCA
ANNUAL MEETING**

**SATURDAY
JANUARY 29, 1994**

ALTAMONT, NY

Canine Hip Dysplasia

by Michael Dathe

Canine Hip Dysplasia is defined as an inherited, multi-gene crippling. The number and mysterious association of genes that cause dysplasia have made it difficult to predict and isolate. It occurs in various degrees of severity, with the severest cases showing in puppyhood and the mildest cases perhaps never being noticed. Its manifestations range from no apparent problems to complete loss of the hips.

First diagnosed at the Angell Memorial Animal Hospital in Boston in 1935, it was long thought to be an isolated abnormality of the tissues in the hip joint. Recent evidence suggests that hip dysplasia is only the most conspicuous manifestation of a systemic disease that can also affect the shoulder and knee joints and the joints between vertebrae.¹

Puppies are born with normal hips, and it is only after birth that the abnormality appears. In a few weeks a laxity, or progressively loose fit, develops where

the end of the thigh bone fits into the socket of the hip. This loose fit allows excessive movement of the thigh bone during normal activity such as weight bearing, walking, running and play. This ultimately leads to wear and tear on the bone and the inflammation of smooth cartilage covering both the bone and the socket. The ligaments holding the thigh bone in place stretch and become thick and inflamed, cartilage erodes and is eventually lost while bone spurs develop which remodel and deform the normal shape of the bone and socket.

The process is painful. The end result is muscle atrophy and a build-up of inelastic scar tissue that grossly reduces the range of motion within the joint.² What the dog owner will see is a lame or crippled working dog or pet.

¹ *Cornell University, Animal Newsletter, March 1993.*

² *Gambardella, Paul C., Chief of Staff, Angell Memorial Hospital, Boston, MA.*

VIDEO REVIEWS

Glyn Jones' Tapes Versus Rural Route Video

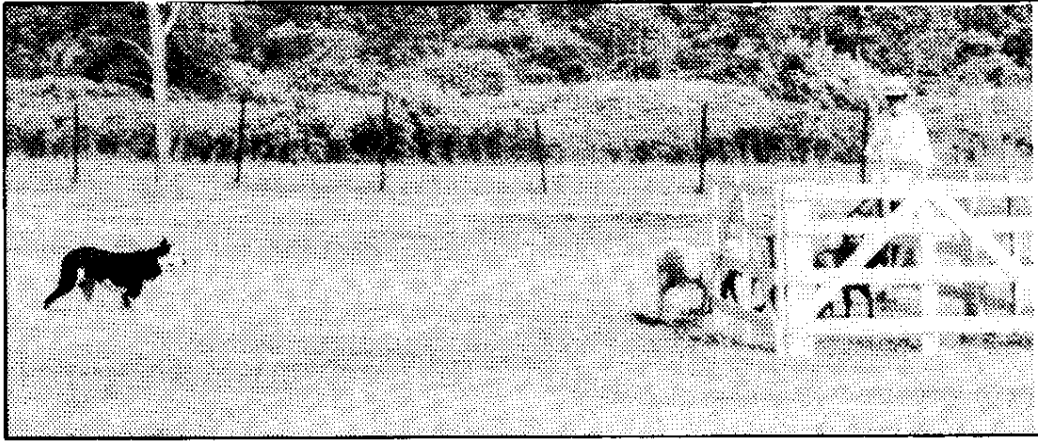
1) *Reviewed by Sarah Gruenig, VT.* "Glyn Jones' 'That'll Do [2nd tape] was better than his first tape - interesting to see how the dogs from the first tape had progressed along. Also interesting was the explanation of his whistles, and how he started dogs in brace work. I still think, though, that the Rural Route Video is more instructive."

2) *Reviewed by Lovanne Carey Block, NH.* "We've found both tapes (Glyn Jones and Rural Route Video) very in-

formative - I see pros and cons to both. The Glyn Jones tape was much more dynamic and exciting to watch and listen to; however, I thought information was presented a bit more logically in the Rural Route tape. We did find that the R.R. tape dragged on in the training section and wished we could have actually heard the commands while he was working rather than the continual narration. I'm sure we've learned a lot from both - they're both where we are at, training-wise, right now so that was great."

Dan (Part V)

by Beverly Lambert



Dan and Beverly Lambert at the Independence Day Trial in Altamont, NY, successfully penning the sheep. Photo by Gene Sheninger

Eds' Note: Our condolences go out to Beverly, who lost Dan just a couple of weeks after we lost Robin.

As many of you know, I got a new job and left Maine in early March to move into an apartment in Connecticut. I left Dan on the farm with a house sitter until early April when he came to the big city to continue his training. This has been a good experience for both Dan and me. It has given me much more sympathy for those of you who train your dogs without having sheep in the backyard to practice on. It has taught Dan to get along in the city.

Dan's training has proceeded, thanks to the generosity of my friends, who have allowed us to practice on their sheep. Dan's last work was in late November when cold weather ended training for the year. I expected to pretty much have to start Dan's training all over again in April, figuring he would have forgotten much in the winter. To my surprise he remembered quite a bit of his training and was able to put it together during his time off. He was still not much better than 90% correct on his flanks up close and only about 50% correct as he drove away. He still made big-time mistakes on his outruns. He was tight to the right and too deep to the left. The big change was not in his obedience but in his attitude. Dan had grown up. He was much quieter and more thought-

ful around the sheep. He tried very hard to do what was asked and moved the sheep with a steadiness and confidence that was lacking last fall.

We started our 1993 training sessions with 100-150 yard outruns. Dan messed up some of them but the ones he did correctly were very nice and filled us both with new confidence. Training sessions are now usually limited to only once a week, and in each session we practice a few short outruns. Dan can go any distance for sheep now, but if he runs far away he tends to stop short or over run, so we do outruns that will be correct. The outruns are interspersed with driving fairly short distances. I am working on Dan's "flanking off the pressure". If the sheep want to go to the right, I ask Dan to flank to the left. All of his instincts tell him to stay on the right side of the sheep to maintain control. I am telling him to obey me and let the sheep go. This is harder to do the further away Dan is from me. Again the solution to this is practice and getting the dog onto new sheep in different fields. We are currently doing this by running in Pro-Novice dog trials. I ask Dan to obey me a little more at each trial. In the early trials when the pressure from the sheep was really heavy or the drive was particularly long I didn't insist on Dan's obeying me to the very end but allowed

continued page 8

NEBCA Library

by Lin Reuther

Now that Fall is here, with longer, cool nights, it's time to borrow a Border Collie video or book - sit back - and get some training/working tips and inspiration (to keep you motivated to work a while longer!) - or just be entertained by our black & white friends (or tri-color, or red, or merle . . .)

We have received our two new books which were on order:

Search and Rescue Dogs - Training Methods, by the American Rescue Dog Association.

Agility Training - The Fun Sport for All Dogs, by Jane Simmons-Moake.

Both look excellent. We are looking for interested readers who might do a short book review for the NEBCA News.

We also hope to get a book on dog sledding donated soon. Let me know if you are interested in borrowing any of these items!

I can also send out copies of video reviews people have written for the NEBCA News in case you'd like to read someone's opinion of a video before borrowing it.

Lending Library Rules:

1) Videotapes are \$3.00 each (\$6.00 set of 2, \$9.00 set of 3); you may borrow just one video from a set. Videos are lent for 2 weeks.

2) Books are lent free of charge for 3 weeks.

3) Borrower pays return postage.

4) Only one book or video (or set) out to a person at a time.

5) Overdue fines are \$.10 per day.

Send requests to:

Lin Reuther
RR 1 Box 1147
Pittsford, VT 05763

NEBCA Library Holdings

BOOKS

Training the Sheep Dog

E. B. Carpenter - *The Border Collie: Basic Training for Sheepwork*

Katy Cropper - *A Dog's Life in the Dales*

Tony Iley - *Sheepdogs at Work*

Glyn Jones - *A Way Of Life*
Scott Lithgow - *Training and Working Dogs for Quiet Confident Control of Stock*

Tim Longton - *The Sheep Dog: Its Work and Training*

Pope Robertson - *Anybody Can Do It*

Carroll Shaffner - *Training A Working Collie*

Mari Taggart - *Sheepdog Training; An All-Breed Approach*

John Templeton - *Working Sheep Dogs - Management and Training*

Luke Pasio - *Heather Jean: The Working Sheep Dog*

General/Health

Janet Larson - *The Versatile Border Collie*

Marjorie Quarton - *All About the Working Border Collie*

Eddie Straiton - *Dog Ailments - Recognition and Treatment*

continued page 5

Library

continued

Shepherd's Life

G. M. Anderson - *Times Remembered*

John Barrington - *Red Sky At Night*

Edward Hart - *The Hill Shepherd*

Louis Irigaracy - *A Shepherd Watches, A Shepherd Sings*

Phillip Keller - *Lessons from a Sheepdog*

Michael Mathers - *Shepherders - Men Alone*

Fiction/Children's

James Herriott - *Dog Stories*

James Herriott - *Only One Woof*

Dick King-Smith - *Babe the Gallant Pig*

Miscellaneous

Jane Burton - *A Dog's Life, A Year in the Life of a Dog Family (photos)*

E. B. Carpenter - *The Blue Riband of the Heather, The Supreme Champions 1906-1988*

Betty Cavanna - *The First Book of Wool*

Donald McCaig - *Eminent Dogs, Dangerous Men*

Olivia Mills - *Practical Sheep Dairying*

Jane Simmons-Moake - *Agility Training - The Fun Sport for All Dogs*

American Rescue Dog Association - *Search and Rescue Dogs - Training Methods*

VIDEOS

1989 British International Supreme (Parts I and II)

1988 International Supreme (Parts I and II)

"One Man and His Dog 1990"

"One Man and His Dog 1991", includes part of the 1989 International

"Getting the Right Start" - R & R Graves (Parts I and II)

"Training the Working Stock Dog" - Elvin Kopp (Parts I and II)

"Come Bye! And Away! The Early Stages of Sheep Dog Training" - Glyn Jones

"That'll Do! Widening the Sheepdog's Experience" by Glyn Jones (Tape II)

"Training the Working Border Collie" - Tony Collins (Parts I and II)

University of Guelph Series:
Part 1 - "Selection and Early Training of Border Collies";
Part 2 - "Basic Training for Sheep Work"; Part 3 - "Advanced Training For Sheep Work"

"Training and Working a Border Collie" - Rural Route Video

"How To Get The Most From Your Working Dog" - Scott Lithgow, companion to his book, *Training and Working Dogs*

"The Sheepdog Video - The Training and Handling of a Sheepdog for the Better Management of Small Stock", filmed in South Africa.

"The Perfect Stock Dog" - Ben Means

"Training the Working Stockdog"

Tapes cost \$3.00 each to borrow and may be kept for two weeks. There is no charge to borrow books which are loaned for three weeks. Send requests to:

Lin Reuther
RR 1, Box 1147
Pittsford, VT 05763

Border Collie Rescue Services

Patty Allison (ME, VT,
NH, MA, CT, NY)
RR 1, Box 665
Harrison, ME 04040
(207)583-2353

Sharon Nunan (PA)
3329 Foulk Road
Boothwyn, PA 19061
(215)497-4378

Nancy Cox Starkey (MD)
12895 Colonial Drive
Mt. Airy, MD 21771
(301)253-4732

The Treasure of Sheepy Hollow

by Nancy Cox Starkey



The Jagger Family: Walt & Eleanor Jagger, Cheryl Jagger Williams and Dick Williams.
Photo by Gene Sheninger

Most of us have been to a little place called Sheepy Hollow. Nestled between the hills in Hop Bottom, PA, a genuine treasure can be found. One needn't look too hard to spot this rare commodity.

This "jewel" could be the lovely setting itself. The lush tree-covered slopes with scenery hard to match. The crystal-clear stream which courses through the farm. The finely-mowed fields reflect gentle care and tending.

One might consider this "wealth" to be the wonderful dogs which have called Sheepy Hollow home. Great dogs of the past, fine dogs of the present, and promising dogs of the future are the product of true dedication to our marvelous breed.

Another "rare find" is the top-notch training and instruction program offered by the Hop Bottom Team. Not only can they produce finely trained dogs, but they can teach people to become proficient handlers and trainers. Being able to teach both canine and human students equally well is a combination not often found.

But, the real treasure of Sheepy Hollow is a family named Jagger. Walt and Eleanor, Cheryl and Dick (an honorary Jagger) are indeed "gems". Their tireless spirit should be an inspiration to us all. Even when life deals hardships their way, they continue on. They find a way to make other people and their problems seem more important than their own. They are always quick to offer encouragement and guidance, especially to those who, like myself, have so much still to learn. Visitors are always made welcome, whether for a few hours or several days. One feels comfortable spending time there. I feel that I am very fortunate to be considered their friend, as these folks are truly a genuine treasure.

Upcoming Clinics

This listing is provided as a service to NEBCA members but in no way represents an endorsement of the trainers or sponsors of these events by NEBCA News or the Northeast Border Collie Association.

January 15-16, 1994: Judging Clinic with Bruce Fogt, Mt. Airy, MD. Contact Nancy Cox Starkey, 12895 Colonial Drive, Mt. Airy, MD 21771 (301)253-4732.

PennHIP

by Michael Dathe

The University of Pennsylvania School of Veterinary Medicine is using an alternative way of positioning hips for radiographs/x-rays in the detection of Canine Hip Dysplasia/CHD. In a program titled PennHIP headed by Dr. Gail Smith, a team of researchers is presenting evidence that shows this positioning method allows for the accurate detection and diagnosis of dysplasia as early as 16 weeks of age.

The PennHIP method places the hip in a neutral weight-bearing orientation to obtain a different view of the hip than obtained in the hip-extended position presently used by the OFA. This different view, PennHIP research shows, allows for the measurement of laxity in the hip joint more accurately than the system presently used. Hip joint laxity, they believe, is the best indicator of whether a dog will suffer from the Degenerative Joint Disease/DJD of Dysplasia.

The greater accuracy in determining hip joint laxity shows a much higher rate of dysplasia than determined by the OFA. In fact, they believe it may be 2-4 times higher than the rates of

occurrence listed for any breed by the OFA.

That is bad news, and so is their opinion that "the standard hip-extended x-ray is, at best, a crude measure of a dog's breeding value". However, the potential accuracy and early detection of Dysplasia is certainly good news for breeders. They believe their improved accuracy will identify the troublesome sub-clinical carriers and correctly label these dogs as having CHD. PennHIP believes that the information derived from their method "will serve as a powerful tool for the selection of breeding stock free of the susceptibility of CHD."

PennHIP is presently instructing and certifying various clinics throughout North America in their methods. A listing of these veterinarians and clinics in the Northeast, as well as those more literate on this subject, will be available in the NEBCA Library.

I am considering using this new screening method in determining the status of my new pup's hips. I would then also have him x-rayed by the OFA's methods at two years of age. I'll write again then and let you know what I have learned.

A FRIEND

by Gene Sheninger

Last year we lost Dad.
Now we've lost Mom.
And, as we put her to rest,
I lost Robin, too.
I was lost in the grief
we all felt without Mom.
He ran off in the confusion
and sadness we felt.

He was hit by a car,
trying to find his way home.

A Friend wrote:
"Sending you my love;
I wish I lived closer,
so I could help
to raise your spirits up."

Another Friend wrote:
"Your Mom was a big part of my life,
I think of her often."

Still another Friend:
"We will remember you,
and may you find some
comfort and peace in your sorrow
at this most difficult time."

Through it all, from all our Friends,
the message was clear:
"Please know that we are all
thinking of you in this time of sorrow."

A Friend said: "Too many, we have lost too many.
I wish there was a way to say
something magical to take your pain away.
It's just not fair."
Then she hugged me, as if to squeeze away the pain.

A Friend said: "She's a beautiful woman."
Then he held me tight, and we cried together.

And, what about Robin,
lying by the side of a road, alone far away.

Friends who live there went to him.
They buried him in their field,
under a headstone they made with loving care.

This they did without being asked,
because such a thing was too much to ask of Friends.

Now, you can visit my dog,
You'll see him at a trial.
At least, look for his headstone,
with only one word: "ROBIN"

Dad was a father, a guide, a coach, a friend.
Mom was a mother, a teacher, a nurse, a friend.
Robin was a good dog, a faithful friend.
They all asked nothing in return but a little love.

I will visit them all as time goes on.
And, each in their own way
will get better in my mind.

Beth Ann says, as she lays down to sleep:
"Robin was our best dog,
he was a part of our family,
I will miss him.
I miss Grandpa; I miss Grandma."

Too many, We have lost too many.
There was Dad, and there was Mom,
there was Robin. Where have they gone:
Dad, Mom, Lynne's Mom, Robin.
And what about the others:
Alan, Tess, Sandy, Vic, Dot, Perky,
Heidi, Tibby, Dan and all the rest?

Thank God for Friends.
How else could we stand the pain.
Thank you Friends.



THE WORKING BORDER COLLIE MAGAZINE

14933 Kirkwood Road, DeptNJ
Sidney, Ohio 45365
(513)492-2215

Training Articles * Veterinary Column
Livestock Guard Dog Articles * Feature Articles
Trial & Clinic Dates * Breeder's Directory

Today's Magazine For The Working Border Collie

US Funds Only

\$25.00 / year - US
\$35.00 / year - Canada

Spring Valley Nursery Trial Strafford, VT August 21-22, 1993

by Lin Reuther

Steve Wetmore and Sarah Root hosted what has become known as one of the most fun nursery trials at their beautiful farm in Vermont. The weather was lovely, late summer, warm with cool nights. Steve's sheep were, as always, light and responsive to the dogs; the steep hill course challenging, with heavy pressure to both sides. The judges - Steve Wetmore on Saturday, David Young of Canada on Sunday - were fair and consistent.

On Saturday afternoon after the nursery classes, Steve let handlers who wished have non-competitive open runs - fun to try!

Besides being a well-run trial in a lovely setting, all the little extras made it such a good time - homemade blueberry muffins by Sarah, blueberry pancakes by Steve, sitting around singing Saturday evening.

Thanks to everyone who helped to make it a success - especially Michael Dathe (and his new pup, Cobb).

Saturday, August 21

Novice/Novice	80 Pts	11 Dogs Ran
1. Lin Reuther	Jaff	67
2. Jean Kennedy	Hank	62
3. Jean Kennedy	Max	61
4. Kate Collins	Pippin	59
5. Chalmers Means	Duke	56
6. Ann Bennett	Maid	46
7. Robin Teva	Jasmine	36
8. Tom Ames	Maev	25

Pro/Novice	80 Pts	6 Dogs Ran
1. Denise Leonard	Meg	62
2. Jill Parker	Mike	54
3. Kerry Parker	Shadow	50
4. Lin Reuther	Jen	49
5. Lois Burke	Meg	47

Ranch	90 Pts	6 Dogs
1. Denise Leonard	Nikki	75
2. Jean Kennedy	Sue	73
3. Bob Thrasher	Cash	72
4. Betty Levin	Tay	68
5. Chalmers Means	Pip	67

Sunday, August 22

Novice/Novice	80 Pts	12 Dogs
1. Joanne Krause	Shade	64
2. Jean Kennedy	Hank	63
3. Andy Rice	Rug	54
4. Maria Mick	Annie	53
5. Kate Collins	Pippin	52
6. Ann Bennett	Maid	48
7. Maria Mick	Winn	44
8. Lin Reuther	Jaff	40
9. Tom Bennett	Maev	32

Pro/Novice	80 Pts	10 Dogs
1. Jill Parker	Mike	66
2. Denise Leonard	Meg	61

Scottish Festival Open Trial Quechee, VT August 28, 1993

by Lin Reuther

The Quechee Trial had its usual terrific attributes: lots of Scottish atmosphere (kilts, food, music, dancing, games, etc.), great weather, a nice setting. And there were a few changes this year: a new manager, Steve Wetmore, who ran a smooth, organized trial, and the course changed (to allow for more parking spaces!), so that sheep were set out up a moderate hill. A more interesting course to watch and run! Hundreds of spectators enjoyed watching the dogs and hearing continuous commentary.

Sheep, provided by Roger Deschambeault, were uneven and touchy in the morning, and most dogs had trouble, especially on the cross-drives. The sheep settled by the afternoon and the scores reflected better work.

Thirty-four dogs ran, with the final placings being:

1. Beverly Lambert	Lark	94
2. Roger Deschambeault	Don	91
3. Mike Canaday	Robin	89
4. Becky Peterson	Fly	88
5. Roger Deschambeault	Tyson	87
6. Betty Levin	Kelty	86
7. Beverly Lambert	Mac	86
8. Mike Canaday	Jip	85
9. Denise Leonard	Nikki	78
10. John Roche	Dave	76

MEMBERSHIP RENEWAL

The membership year runs from January 1 to December 31 for each year. Renewals are due on January 1, 1994. The only exception is for new members who joined after July 1, 1993; they need not renew until January 1, 1995. Use the form included in this Newsletter to renew and be sure to send dues and renewal to the Secretary:

Kathy Deschambeault
Nearfield Farm
2440 E. Conway Rd.
Ctr. Conway, NH 03813

3. Mary Ellen Young	Nan	58
4. Lois Burke	Meg	49
5. Kerry Parker	Shadow	41

Ranch	90 Pts	6 Dogs
1. Chalmers Means	Pip	75
2. Denise Leonard	Nikki	70
3. Betty Levin	Tay	60
4. Lin Reuther	Jen	53
5. Denise Leonard	Meg	48

Overall Champions:

Novice/Novice - Jean Kennedy & Hank
Pro/Novice - Denise Leonard & Meg
Ranch - Denise Leonard & Nikki

Dan V

continued

him to take his own line for the end of the drive. These classes are to teach a Dan to accept pressure and work in strange situations. Dan is still less than two-years-old and quite immature for his age. In these early trials Dan needs positive experiences and practice, not blue ribbons.

As the season progressed into May and June, Dan's obedience improved on the drive and his outruns finally got solid. By the middle of June, Dan could readily run out 300 yards and fetch sheep quite nicely, even flanking some on the last part of the fetch in response to commands. His driving is good and steady with even pressure and good obedience to flank commands. At trials he is still somewhat uncertain in his driving, not keeping the pressure evenly on the sheep and losing his concentration, but he is improving each time he runs. Doug and I and the dogs are moving to a new farm in Connecticut in July and Dan's training will continue.

This is the last of the Dan articles. He has turned out to be

the dog I hoped for when I started his training. I believe he is going to be a good open dog. I expect to start him in Open Trials at the end of this summer or next year - as soon as he learns to flank as told at the drive gates. Whether he is a winner or not, he does his best for me and is fun to work with. The fun in sheep dog trialing we can make for ourselves. The winning is a nice extra that good luck sometimes gives us.

I believe it is time to go on to other things with this column as well. I would like to try the "questions from reader's" approach again. If anyone has any training or handling questions for me or any other open handlers, just send them to the newsletter or to me, or ask me when you see me at trials. In the absence of questions I will respond to problems that I see people having in the Novice and Pro-novice classes this summer. These are two very difficult classes to compete in. By the time most dogs reach Ranch and Open, the handler can at least be confident that the dog will make some effort to do as it is told. At the Pro-Novice and Novice level almost anything goes.

Talking to Santa Claus



Art and Design by Linda S. Fossetta
75 Mendham Road, Morristown, NJ 07960
201-267-1030

Keystone Trial *continued*

out trophy displays; Maria Mick provided the running order posters and helped get us started listing competitors; R.C. Gilbert and Nancy Ortiz did much of the physical course set-up and go-phering relevant to putting on a trial. Cheryl J. Williams took care of the set-out sheep schedule (so I could busy myself running around like the proverbial chicken); Ryan Marschark worked in the holding pen for two days, alone and with a cold, some sheep setter-outers were: R.C., Cheryl, Dick, Gene Sheninger, Mary Brighoff, Nancy Starkey, Barb & Bernie Armata, Susanne Craddock, Jeff Hoffman (of Sheepman Supply fame), Nancy Ortiz and me. Len, Beverly and others took turns at the PA system to help

keep the spectators up to date on the action.

A BIG THANKS TO YOU ALL !!! We truly could not have done it without you!

We had the press out each day which resulted in two very nice write-ups. The Hexenkopf Pony Club provided yet another delightful chicken & brisket dinner, with a dessert table complete with trifle. Friday night was Pot Luck at our house with Len's venison roast as the main course. And although the heavens gave us two inches of rain overnight Saturday, we had no rain either day!! Yeah! Never mind the tradition of rain! Course, getting the motor-homes unstuck in eight inches of clay on Sunday . . .

Thanks again for the help . . . and the friendships!

September 25, 1993

Novice/Novice	19 Dogs Ran	80 Pts Possible
1. Roger Millen	Tripp	75
2. David Clark	Lydia	74.5
3. Barbara Starkey	Jayne	73
4. Nancy Starkey	Mist	72.5
5. Jeff Hoffman	Jim	72.5
6. Kate Collins	Pippin	71
7. Polly Matzinger	Annie	70.5
8. Nancy Starkey	Bunks	68.5
9. Susanne Craddock	Roy	66.5
10. Bill Gregor	Brew	63

Pro/Novice	13 Dogs	80 Pts Possible
1. R. C. Gilbert	Ring	76
2. Mary Brighoff	Craig	72
3. Mike Canaday	Bill	71.5
4. Gene Sheninger	Gael	64.5
5. Nancy Ortiz	Vega	58
6. Mike Canaday	Glyn	58
7. Walt Jagger	Glen	57
8. Jeff Hoffman	Glen	56.5
9. Cheryl J. Williams	Rusty	56
10. Maria Mick	Fly	38.5

Ranch	4 Dogs	90 Pts Possible
1. Ken Sigel	Mac	37
Beverly Lambert	Dan	DQ
Ken Sigel	Jen	DQ
Bill Gregor	Quill	Ret.

USBCA Offered - No Participants

continued page 10

NJ State Trial *continued*

At Fosterfields this year, we had almost 3000 spectators over the three days. Saturday brought us off-and-on rain, so the crowd was a bit thin. However, Sunday and Monday were beautiful, a bit too hot and humid for our dogs (and many of us), but the crowd loved it. You see, Bob Fossetta, the farm's supervisor, has set up the fencing so there is a section down by the handlers post that is about 20 feet wide and as long as the trial field is wide. It is under a long stand of sugar maple trees along its whole length, shaded for the entire day, and the spectators can sit on blankets or chairs with their coolers and relax with their families. It is a great spot from which to watch our antics on the field. The entire course is uphill, with about a 250 yard out-run, 150 yard first drive leg and a 200 yard crossdrive. They can watch every run from about the same vantage point that the handler and judge have. And the best part is that there is plenty of room for everyone. Even with these large crowds, the spectators come and go, they spread out around the entire field, so there is never so many people that you feel crowded.

On Saturday, we ran all three novice classes -- a total of 51 dogs. The weather didn't cooperate very well, but there was never enough rain to get anyone totally wet. Our Sheep Crew was, again this year, the team of students that work with Kate Treadwell-Hill, the shepherd from Rutgers. What a job they did. They, with the help of a couple of dear friends - Barbara and Steven Levinson - handled sheep for the entire three days. They know sheep, so we never had a problem with sheep that were hassled to the post. The planning was perfect. We started at 10:00 a.m., just as the gates of the park opened, and we finished around 5:30 p.m., so that everyone could get cleaned up for dinner. The "Friends of Fosterfields" arranged a won-

derful dinner with a local caterer, and the Morris County Park Commission generously donated the use of the Visitors Center and Museum. As usual, our sheepdog crowd was loud, rowdy and boisterous, while the "Friends" remained proper and demure.

On Sunday (what a day), we started at 7:30 a.m. and went through the entire day until 6:00 p.m. The park gates did not open until 1:00 p.m., so there was not much of a crowd until then - only those who snuck over the fence. We ran a total of 80 dogs, 49 in the three novice classes and 31 in open. The course for open was a right-hand drive with a chute, pen and then shed. The course was challenging, the sheep were challenging (this was their first and only trial this year), and the judge was strict. But what a job our handlers did. The entire lot, from novice to open, put on a wonderful show. That night, we went back again to the Visitors Center for a potluck dinner that included the leftovers from the night before. This crew ate almost the whole thing!!

On Monday, we were able to sleep in a little. The park gates didn't open until 10:00 a.m., so we waited until then to start. We ran USBCHA Nursery and Open. This time, we set up the open course for a left-hand drive, a Maltese Cross, and a shed - without a pen. Again, our handlers put on a spectacular show. The crowd loved it, spurred on by excellent commentators like Lenny Marschark, Dick Williams, and Bernie Armata.

Our thanks go out to the Morris County Park Commission for their generous donations to the trial, Bob and Linda Fossetta for their tireless efforts in preparing the field, Betty Boudreau for judging each run as consistently and fairly as the first run of the day for the entire weekend, our sheep crew from Rutgers (they suffered through the heat and humidity for the entire

three days), and all of you handlers who made this such a wonderful event for our spectators. Thanks also to our scorekeepers, Barbara Means, Nancy Starkey, Susanne Craddock, Mary-Anne Fallon, Barbara Levinson and Sylvia Murray for their efforts over the three days.

The Most Promising Young Dog and Handler award, a Border Collie print by Mick Cawston, went to New Jersey's Dave Clark and his young dog Lydia.

The Champion Open dog for the two days was Cheryl Jagger Williams' Nell, who will receive a pastel portrait painted by Linda Fossetta. The Reserve Champion Open dog was Ch-

eryl Jagger Williams' Kim who will receive a pen and ink portrait also done by Linda Fossetta.



Barbara Means, Secretary and Betty Boudreau, Judge.

Photo by Linda Fossetta

Saturday, September 4, 1993

Novice/Novice Class - 28 Dogs Ran

1.	Lin Reuther	Jaff	70
2.	Susanne Craddock	Roy	69
3.	Nancy Ortiz	Vega	67
4.	Sharon Nunan	Kep	67
5.	David Clark	Lydia	65
6.	Nancy Cox Starkey	Mist	62.5
7.	Sharon Nunan	Jeepers	62
8.	Nancy Cox Starkey	Bunks	57
9.	Lorna Savage	Spin	57
10.	Sandra Sanderson	Jigg	57

Pro/Novice - 17 Dogs Ran

1.	Walt Jagger	Glen	66
2.	Maria Mick	Fly	64.5
3.	Carol Campion	Queen	63
4.	Eve Marschark	Kid	63
5.	Nancy Ortiz	Vega	61
6.	R. C. Gilbert	Ring	59
7.	J. P. Lalonde	Ben	57
8.	Mike Canaday	Bill	57
9.	Barbara Armata	Annie	55.5
10.	Sylvia Murray	Duke	54

Ranch Class - 6 Dogs Ran

1.	Sally Lacy	Tru	77.5
2.	Ken Sigel	Mac	72
3.	Rich Seaman	Sock	53
4.	Carol Campion	Dave	49
5.	Lin Reuther	Jen	47
6.	Ken Sigel	Jen	38

Sunday, September 5, 1993

Novice/Novice Class - 23 Dogs Ran

1.	Dave Clark	Lydia	73
2.	Annette Foxon	Tammy	73
3.	Maria Mick	Annie	72
4.	Sally Lacy	Bob	71

continued page 10

NJ State Trial *continued*

5.	Heather Murray	Meg	70.5
6.	Susanne Craddock	Roy	67
7.	Lorna Savage	Spin	67
8.	Joanne Krause	Shade	66
9.	Sharon Nunan	Jeepers	62
10.	Nancy Cox Starkey	Mist	59

Pro/Novice - 20 Dogs Ran

1.	Walt Jagger	Glen	75.5
2.	Nancy Ortiz	Vega	60.5
3.	J. P. Lalonde	Ben	58
4.	Rich Seaman	Cleo	57
5.	Carol Campion	Queen	55
6.	Gene Sheninger	Gael	55
7.	Sylvia Murray	Duke	55
8.	Cheryl J. Williams	Rusty	55
9.	Mike Canaday	Bill	55
10.	R. C. Gilbert	Ring	51

Ranch Class - 6 Dogs Ran

1.	Lin Reuther	Jen	76
2.	Carol Campion	Dave	72
3.	Sally Lacy	Tru	68
	Ken Sigel	Mac	Ret.
	Ken Sigel	Jen	Ret.
	Rich Seaman	Socks	DQ

Open Class - 31 Dogs Ran

1.	J. P. Lalonde	Madi	103.5
2.	Cheryl J. Williams	Nell	103
3.	Gene Sheninger	Robin	102.5
4.	Walt Jagger	Roy	101
5.	Becky Peterson	Roy	99.5
6.	Cheryl J. Williams	Kim	95
7.	Dick Williams	Jess	93.5
8.	Gene Sheninger	Meg	92.5
9.	Becky Peterson	Queen	92.5
10.	Walt Jagger	Celt	91

Monday, September 6, 1993**Open Class - 27 Dogs Ran**

1.	Eve Marschark	Spin	102
2.	Cheryl J. Williams	Kim	97.5
3.	Mike Canaday	Jill	96.5
4.	Dick Williams	Jess	94
5.	Becky Peterson	Queen	91.5
6.	Becky Peterson	Roy	91
7.	Cheryl J. Williams	Nell	90.5
8.	Walt Jagger	Roy	89.5
9.	Dick Williams	Kate	89
10.	Mike Canaday	Duke	88

USBCA Nursery - 4 Dogs Ran

1.	Mike Canaday	Robin	79.5
2.	Walt Jagger	Glen	68.5
3.	Sally Lacy	Tru	65.5
4.	Mike Canaday	Bill	Ret.

Best Gather - Walt Jagger & Celt**Best Drive** - Mike Canaday & Jill**Best Pen** - Cheryl Jagger Williams & Kim**Best Shed** - Becky Peterson & Queen**Keystone Trial** *continued*

Open	28 Dogs Ran	110 Pts Possible
1.	Beverly Lambert	Lark 94
2.	Cheryl Jagger Williams	Nell 93
3.	Eve Marschark	Spin 89
4.	Barbara Armata	Kelly 89
5.	Beverly Lambert	Jet 88.5
6.	Walt Jagger	Queen 88
7.	Cheryl Jagger Williams	Kim 86.5
8.	Mike Canaday	Jill 86
9.	Gene Sheninger	Meg 83.5
10.	Walt Jagger	Roy 82.5

Sunday, September 26, 1993

Novice/Novice	18 Dogs
1.	Polly Matzinger Annie 73.5
2.	Nancy Starkey Mist 73.5
3.	Roger Millen Tripp 70.5
4.	Barbara Starkey Jayne 66
5.	Bill Gregor Brew 62
6.	Sharon Nunan Kep 59.5
7.	Susanne Craddock Roy 58
8.	Barbara Starkey Jet 56
9.	Maria Mick Annie 54
10.	Kate Collins Pippin 52

High-Point Combined - Nancy Starkey & Mist 146 pts.

Pro/Novice	14 Dogs
1.	Maria Mick Fly 76.5
2.	Cheryl Williams Rusty 71.5
3.	Mike Canaday Bill 71
4.	R. C. Gilbert Ring 71
5.	Mary Brighoff Craig 69
6.	Walt Jagger Glen 68
7.	Nancy Ortiz Vega 65
8.	Jeff Hoffman Glenn 60
9.	Gene Sheninger Gael 52
10.	Barbara Armata Annie 44.5

High Point Combined - R. C. Gilbert & Ring 147 Pts.

Ranch	5 Dogs Ran
1.	Ken Sigel Mac 805.
2.	Bev Lambert Dan 73
3.	R. C. Gilbert Ring 64

*continued page 11***BREEDERS DIRECTORY**

The Breeders Directory runs from January 1 through December 31. The enrollment period for all renewals or new listings for 1994 is from November 1, 1993 through January 30, 1994. All listings **MUST** be paid and received by January 30, 1994. This will include both the Newsletter and Calendar. The fee is \$10.00 for five lines. Make checks payable to NEBCA. Use the form included with this Newsletter and send check and listing to:

Kathy Deschambeault
Nearfield Farm
2440 E. Conway Rd.
Ctr. Conway, NH 03813



NEBCA CALENDAR

1994 Border Collie Calendar. Full color cover; action photos. Great for gifts or to give with puppies. Only \$6.00 plus \$1.00 postage. Write to Steve Wetmore, Spring Valley Farm, P. O. Box 54, Strafford, VT 05072.

Keystone Trial *continued*

High Point Combined - Ken Sigel (Mr. Ranch, Himself) & Mac 117.5

Open	29 Dogs Ran
1. Walt Jagger	Queen 107
2. Eve Marschark	Spin 105
3. Beverly Lambert	Lark 104
4. Dick Williams	Jesas 102
5. Cheryl Williams	Fleet 101.5
6. Walt Jagger	Celt 99
7. Mike Canaday	Jill 98.5
8. Gene Sheninger	Meg 97
9. Barbara Armata	Kelly 97
10. Cheryl Williams	Kim 97

Best Shed: Dick Williams & Jess

Best Drive: Cheryl Williams & Kim

Best Outwork: Barbara Armata & Kelly

Most Promising Young Dog: R. C. Gilbert & Ring

High Point Champion: Beverly Lambert & Lark 198 Total

High Point Reserve Champion: Walt Jagger & Queen 195 Total

CLASSIFIED:

Classified ads cost \$3.00 per issue or \$10.00 per year (four issues and all supplements - no changes) for 50 words or less. \$.20 per word will be charged for longer ads. Sorry, we can no longer accept ads by telephone. Checks or money order must accompany ad.

CUSTOM BORDER COLLIE TRAINING SERVICES AVAILABLE: private lessons, clinics and exhibitions. Pups through started dogs available. Cheryl Jagger Williams, RR 1, Box 1374, Hop Bottom, PA 18824 (717)289-4733.

MERLYNN KENNELS Border Collies and Kathadin Hair Sheep. Merle and black and white puppies and occasionally started dogs, all breeding stock OFA certified and eye checked. Proven producers of trial and obedience winners. Kathadin Hair Sheep originated in Maine, excellent for working dogs, no shearing or tail docking necessary. Lynn Deschambeault, Merlynn Kennels, RR 1, Box 897B, Bridgton, ME 04009 (207)452-2898.

BORDER COLLIE TRAINING SERVICES for dog & handler. Puppies thru started & trained dogs. Eve

Marschark, Ivyrose Farm, Box 397, Bedminster, PA 18910 (215)795-2023.

BORDER CORNER, Border Collie specialty shop featuring training books, videos and gifts. Kathy Kemper, P. O. Box 91504-215, Arlington, TX 76015 (817)572-6767.

THE TRAINING CENTER for the advancement of the working stock dog - clinics, lessons, training, registered Border Collies, trained and started dogs and pups. Contact Vergil or Bonnie Holland (606)873-6374.

REGISTERED BORDER COLLIES - Stud Service and puppies from proven working bloodlines! Breeding and guaranteeing satisfaction of working and versatile Border Collies since 1973! Lacy's Border Collies, Tom and Karen Lacy, 109 North Lake Avenue, Richmond, Virginia 23223 (804)737-2412.

STAR is an unspayed, female Border Collie, ABC, B&W, med. coat, 17 months old, out of Ann Bennett's "Nell" and Steve Wetmore's "Imp. Ben". No bad habits and very

loving. Shows great potential and needs someone that can give her a job. Call (207)361-2126.

BORDER COLLIE PUPS! Applegarth Border Collies announces an exciting October litter by Cheryl J. Williams' Imp. Fleet out of our Zoe (Marschark's Spin x Kindig's Ring). Impeccable balance, quiet power, biddability. Hips/eyes clear. Pups guaranteed. Working homes preferred. Great trial potential! Contact Jan Kubas, P. O. Box 41, Hannastown, PA 15635 (412)836-2738.

KATADHIN/BARBADO RAM LAMB, triplet, born 1/93, \$75. Katadhin yearling ram - fawn-colored. Both healthy, easy care - no shearing or tail docking. Cross with wool breeds to add "lightness" to your flock. Lin Reuther, RR 1 Box 1147, Pittsford, VT 05763, (802)483-9321.

BORDER COLLIE CHRISTMAS PUPPIES. Ready for your selection 12/15/93. Cheryl Jagger Williams' Imp. Fleet x Melanie Campbell's Dex - 3 male, 3 female, guaranteed and vet

checked. Working homes preferred. Please call Melanie Campbell (315)926-5422, Steel Point Shepherds, Marion, NY.

MALE - 2 yrs. old - attractive - partially trained for farm or pet. Edith Overly, 1011 Edmonds Rd., Framingham, MA 01701 (508)877-2294.

PUPPIES - Ben & Nan - 4 males born Nov. 6. Hips & eyes cleared. Proven breeding. Other litters on ground working. Contact Steve Wetmore, Box 54, Strafford, VT 05072 (802)765-4466.

Mid-Atlantic Border Collie Association

New and Fast Growing Association Serving the States of PA, NJ, MD, DE. Quarterly Newsletter for Members. Clinics, Fun Days, Fun Trials

Annual Dues \$10.00
Send to:

Secretary/Treasurer
Nancy Cox Starkey
12895 Colonial Drive
Mt. Airy, MD 21771

BREEDERS DIRECTORY

This listing of breeders of Border Collies is for informational purposes only and in no way represents an endorsement of these breeders by the Northeast Border Collie Association. Responsible Breeders would be very happy to provide references to anyone intending to use their services. Only Breeders who subscribed before the deadline of January 31, 1993 are listed. Minor changes to addresses during the year will be accommodated, but there will be no additions.

Karla Bock & Bob Basile Hoof & Paw Farm RFD 1, Box 85 New Sharon, ME 04955 (207)778-3903	Edgar Gould Cooperlane Farm Shelburne Falls, MA 01370 (413)625-6496	Paul Lagacé Ferme Le Mouttonnoir 3232 Rang 4, St. Ulric Quebec GOJ 3H0 Canada (418)737-4227	Alex McKinven Cessnock Farm, RR 1, University Rd., N. Hatley Quebec JOB 2C0 Canada (819)842-2975	Bea & Paul Quirk Country Crossroads Farm P. O. Box 778 Sandwich, MA 02563 (508)775-4742	Fran Wheeler Willowgate HCR 72, Box 7405 N. Waterboro, ME 04061 (207)793-2679
Stephanie Calder Singing Falls Farm RFD #4, Box 7810 Skowhegan, ME 04976 (207)474-2852	Martha Gutzan P. O. Box 1157 Jackson, NJ 08527 (908)928-8766	Beverly Lambert Doug McDonough 280 Hebron Rd. Andover, CT 06232 (203)742-5300	Gabrielle Merrill Misty Lane Border Collies RFD 1, Box 20 Brownfield, ME 04010 (207)935-2520	Werner F. Reithoeck Nation Valley Farm Box 424, Winchester Ontario K0C 2K0 Canada (613)448-3266	Wieninger's Farm Sarah & John Wieninger Rt. 23A Hunter, NY 12442 (518)263-4772
Carol & Larry Campion 99 Grayville Rd. Amston, CT 06231 (203)537-1386	Dayle & Joan Hamilton RFD 1 34 Brown Brook Rd. Southbury, CT 06488 (203)264-6348	David & Lois Larson Caora Con Kennel (Stud Svc. Only) Durham, NH 03824 (603)868-5313	Sylvia C. Murray Fleece and Feathers Farm 294B Cossaduck Hill Rd. N. Stonington, CT 06359 (203)889-7777	Gene & Lynne Sheninger Wayside Farm 213 Split Rock Road Boonton, NJ 07005 (201)299-9785	Richard & Cheryl Jagger Williams C.J.'s Acres RR 1, Box 1374 Hop Bottom, PA 18824 (717)289-4733
Michael & Pat Canaday RD 2 Box 365 Meadowdale Road Altamont, NY 12009 (518)861-6049	Walt & Eleanor Jagger Sheepy Hollow Farm Box 233 Hop Bottom, PA 18824 (717)289-4663	Denise A. Leonard Tanstaaf Farm 389 Adams Rd. Greenfield, MA 01301 (413)773-5232	Edith Overly Halstor Kennels 1011 Edmonds Road Framingham, MA 01701 (508)877-2294	Kimberly Sworts Brookhaven Farms 10724 McKinstry Rd. Delevan, NY 14042 (716)492-3008	Rick Weltzin & Dee Woessner Toft East 188 Flat Hill Road Lunenburg, MA 01462 (508)582-7682
Jim & Nanci Deschambeault Willowbrook Farm 2242 East Conway Rd. Ctr. Conway, NH 03813 (603)939-3471	Janis Kubas Applegarth Border Collies P.O. Box 41 Hannastown, PA 15635 (412)836-2738	Barbara Leverett Longview Farm RD 2, Box 308 Burrell Rd. St. Johnsville, NY 13452 (518)568-2833	Becky & Hoop Peterson Orchard Valley Farm 41 Bell Road Leyden, MA 01337 (413)624-5562	John Welkel Highland Farm 3201 Johnson Rd. Mt. Vernon, IN 47620 (812)783-2675	
Lynn Deschambeault Merlynn Kennels RR 1, Box 897B Bridgton, ME 04009 (207)452-2898	Sally M. Lacy Keswick Farm Gap Mountain Rd. Box 487 Fitzwilliam, NH 03447 (603)242-3017	Betty Levin Old Winter Street Lincoln, MA 01773 (617)259-8799	Anne B. Priest Blue Island Farms 191 Old Mountain Rd. Port Jervis, NY 12771 (914)856-3209	Stephen Wetmore Spring Valley Farm Box 54 Strafford, VT 05072 (802)765-4466	
Roger & Kathy Deschambeault Nearfield Farm 2440 E. Conway Rd. Ctr. Conway, NH 03813 (603)939-2255	Lacy's Border Collies Tom & Karen Lacy 109 North Lake Ave. Richmond, VA 23223 (804)737-2412	Eve Marschark Ivyrose Farm Farm School Rd., Box 397 Bedminster, PA 18910 (215)795-2023	Ron Quick Brookside Border Collies RR 3, Box 324A St. Albans, VT 05478 (802)524-5642	Rob & Alice Welge 181 Windy Hill Rd. Westbrook, CT 06498 (203)399-7631	

NEBCA NEWS
213 Split Rock Road
Boonton, NJ 07005

FIRST CLASS MAIL
U.S. Postage Paid
Boonton, NJ 07005
PERMIT No. 202

F

EXP:12/31/93

Maria & Warren Mick
5750 Meadowdale Road
RD #2, Box 371-M
Altamont, NY 12009