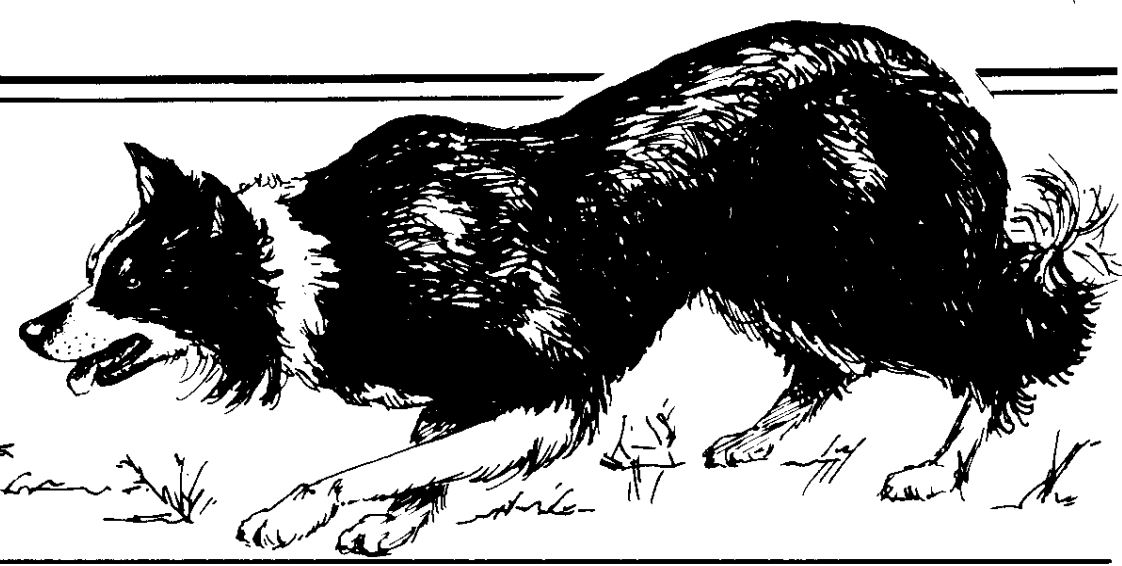


NEBCA

News



OCTOBER 1992

AN OFFICIAL PUBLICATION OF THE NORTHEAST BORDER COLLIE ASSOCIATION

SUPPLEMENT

© 1990 NEBCA News, Boonton, NJ 07005

CONGRATULATIONS TO THE NORTHEAST CHAMPIONS!

Fall Foliage Championship Trial Strafford, VT October 10-11, 1992 Judge: Nathan Mooney, Carlisle, PA

by Lin Reuther

The Fall Foliage Championship Trial moved back to lovely Strafford, Vermont this year, under the excellent management of Stephen Wetmore. The fall leaf colors were at their peak, the weather was cool and clear during the day, the course was challenging - it was a great weekend seeing the top dogs in the Northeast compete.

Each of the 30 dogs had three runs, with scores counted from the top two. Suspense mounted on Sunday afternoon as the dogs put down their final runs, and handlers clustered around the scoreboard to see how they had done. When the dust settled, it was Mike Canaday and Jill on top, followed by Eve Marschark and Spin.

Nathan Mooney did a superb job judging. In order to get through all the runs, he judged without any breaks for lunch or rest, only rarely sitting down, as he constantly moved around to accurately judge the lines.

The sheep, supplied by Mike Canaday, started out fairly heavy and became downright sticky. A few groups were uneven, or somewhat flighty, but

for the most part the dogs had to push them around the course. This led to a fair number of dogs running out of time.

Saturday night found everyone enjoying a delicious potluck supper at a nearby town hall, including delicious salsa and tortilla chips donated by All Seasons Kitchen, a local Vermont company. Dinner was followed by a brief NEBCA meeting (Minutes on page 2).

Many, many thanks to all the people who helped to put on the trial. Number one is, of course, Steve Wetmore, who really made it happen - all the organization and details, set up, take down, program, fundraising, publicity, posters, etc. - all without a glitch or forgetting anything. Thanks also to volunteers Dee Woessner, Bob Thrasher and Lin Reuther who served as secretary; Dave Murray for wrestling sheep in the holding pen; the Hollands for coming up two days early to

help set up; Bonnie Holland for score checking and posting; Olde New England, Inc. for donating the terrific sheep handling equipment which made the sheep holding pen work so much easier; Walt Jagger for ordering the trophies; and Ann

Kitchell for generously donating the use of her beautiful Huntington Horse Farm for the site of the trial; and the handlers who helped setting out and exhausting sheep. It was a great weekend, a fitting end to another trial season.



The Northeast Champions: Lynn Deschambeault, Vergil Holland, Nathan Mooney, Judge, Dick Williams, Beverly Lambert, Walt Jagger, Eve Marschark and Mike Canaday.

- | | | |
|------------------------|-------|-------|
| 1. Mike Canaday | Jill | 186 |
| 2. Eve Marschark | Spin | 181 |
| 3. Walt Jagger | Queen | 180 |
| 4. Beverly Lambert | Lark | 177.5 |
| 5. Beverly Lambert | Jet | 176 |
| 6. Dick Williams | Kate | 176 |
| 7. Vergil Holland | Kip | 175.5 |
| 8. Amanda Milliken | Boy | 175 |
| 9. Amanda Milliken | Hazel | 174.5 |
| 10. Lynn Deschambeault | Dandy | 171 |

**NEBCA ANNUAL MEETING
JANUARY 16, 1993
FITZWILLIAM, NEW HAMPSHIRE**

Editors' Notes

We have just a few short notes for this issue. It is time to vote on a new slate of officers. The Nominating Committee presented their recommendations at the NEBCA Meeting following the Championship

Trial as reported in the Minutes. Please note that three additional people have been nominated for the Board of Directors: Edgar Gould, Dayle Hamilton, and Denise Leonard. But you may vote for only five directors.

Enclosed with this issue is a ballot which must be returned to

Lynn Deschambeault by January 10, 1993. The results of the election will be announced at the Annual Meeting.

The Annual Meeting will be held on January 16, 1993 (snow date January 23) at Sally Lacy's farm in Fitzwilliam, New Hampshire. Directions and fur-

ther information will be included in the next issue.

Have a Happy Thanksgiving!

Lynne & Gene Sheninger

NEBCA Meeting - October 3, 1992 Ctr. Conway, NH

A short meeting was held after the NH State Championship at Roger Deschambeault's on October 3.

Steve Wetmore called the meeting to order and read the Minutes from the meeting held at E. Durham, NY. Minutes were accepted as read. Dee was absent, so Steve gave the Treasurer's Report. We now have approximately \$4,000 in the Treasury (major future ex-

penses: newsletter and the 1994 calendar).

Fall Foliage Trial: An entry fee of \$20.00 per dog will be charged; with 30-35 dogs qualified, that will bring in approximately \$600.00. Steve Wetmore needs money from the Treasury to cover the rest of the expenses. Walt motioned that a total of \$1400 be spent on the Fall Foliage Trial. NEBCA will cover the costs that the entries don't (up to a combined total of

\$1400). Motion was seconded and passed. The trophy budget for the Fall Foliage Trial is \$300, and Walt Jagger is in charge of obtaining trophies. Betty Levin and Denise Leonard sponsor 'The Long Road Trophy' given to the highest-placing owner raised and trained dog.

By Laws Amendment - Board of Directors Vote: We had a total of 282 returned votes: 274 votes for, 8 votes against. The amendment has been passed.

Respectfully submitted,
Lynn Deschambeault
Secretary, NEBCA

NEBCA Meeting Held October 10, 1992 at the Fall Foliage Trial

The meeting was begun by Steve Wetmore handing out the awards to the Top 10 High Point Dogs for the season.

Betty Levin and Becky Peterson (members of the Nominating Committee) presented the slate of officers:

Dick Williams - President
Steve Wetmore - Vice President
Kathy Deschambeault - Secretary
Barbara Armata - Treasurer

Board of Directors:

Vergil Holland - NY
Cheryl Jagger Williams - PA
Karen Greenlees - Canada
Mike Canaday - NY
Lynn Deschambeault - ME

Betty explained that they picked the Board of Directors

based on experience and geographic balance - she also pointed out that this was only a recommendation and anyone can run for any of these offices. They can contact the Newsletter Editors with suggestions.

Steve thanked everyone for helping with the trial, Dave Murray for working in the sheep pen, Lin Reuther for scorekeeping and anyone else who exhausted or set sheep out, etc. Steve reported that the ads paid for printing the program.

As soon as the trial is over, the awards will be handed out. The Annual Meeting will be held in January at Sally Lacy's in Fitzwilliam, NH.

NEBCA Library

Lin Reuther reported on the activity of the Library. She said

she sends 4-6 books/tapes out a week and that there is about a 16-week wait for the Glyn Jones tape. Lin asked if she could transfer the money that had been authorized to be spent on a book (which is now out of print) on another Glyn Jones tape - she was told to go ahead and purchase the tape.

Dave Young motioned that we purchase 2 Glyn Jones tapes. This was seconded and passed.

Carol Campion motioned that a single page calendar be printed with a list of trial dates on one side and the Breeders List on the other. This will be made available to anyone interested and will be available at clinics, trials, and demos. This was seconded and passed.

Meeting was adjourned.

Respectfully submitted,
Lynn Deschambeault
Secretary, NEBCA

NEBCA News
213 Split Rock Road
Boonton, NJ 07005

EDITORS

Gene & Lynne Sheninger
(201)299-9785

NEBCA OFFICERS

President:
Steve Wetmore (802)765-4466

Vice President:
Becky Peterson (413)624-5562

Secretary:
Lynn Deschambeault
(207)452-2898

Treasurer:
Dee Woessner (508)582-7682
188 Flat Hill Road
Lunenburg, MA 01462

Trials Committee Chairperson:
Becky Peterson (413)624-5562
Bell Rd. Box 395
Leyden, MA 01337

**Nursery Trials Committee
Chairperson:**
Eve Marschark (215)795-2023
Farm School Rd.
Bedminster, PA 18910

NEBCA News is published quarterly as the official publication of the Northeast Border Collie Association. Four issues are published: March 1, June 1, September 1 & December 1. Five supplements are issued during the trialing months. Subscription is by membership to NEBCA. Annual membership dues are \$10.00 per individual or \$15.00 per farm. To join, send your name, address and your dues to Lynn Deschambeault, RR 1 Box 897B, Bridgton, ME 04009. Make checks payable to NEBCA.

DISPLAY ADVERTISING

Prices are for camera ready ads. Display Advertising will only appear in the 4 quarterly issues:

| | Single Issues | 1 year (4 issues) |
|--------------------------------|------------------|----------------------|
| Business Card (2" x 3 1/2") | \$15 | \$50 |
| 1/4 Page | \$35 | \$100 |
| 1/2 Page | \$50 | \$150 |
| Full Page | \$75 | \$225 |

non-members add 20%
If choosing the yearly price, ad may not change for the entire four issues without an additional fee.

Central NY Sheep Dog Championship Trials - Syracuse, New York

August 8, 1992

Judge: Tom Conn

by Charlotte Tagtmeyer

Hosting our first trial was a real adventure. We now have a lot more respect for all those folks who regularly host trials and clinics. There is a lot of work involved in pulling it all together, but a lot of fun too!

The trial was held in association with the Scottish Games, which both helped and hindered us. We didn't have to think about concessions, parking, port-a-johns, etc., and we had about 3000 spectators. The noise level from the bagpipes

was a real problem, even with our efforts ahead of time to minimize it. Traffic and a heavy wind added to the noise, so the dogs had a lot of trouble hearing commands, resulting in generally low scores all day. However, we handed out an evaluation form to the handlers and got very high ratings for other aspects of the trial, which is very gratifying. With a few changes in the venue, we look forward to a great time again next year. Thanks to all those dogs and handlers who attended, helped out, and filled out the evaluations!

Novice/Novice

20 Dogs to the Post

| | 90 Possible Points |
|-------------------|--------------------|
| 1. Lorna Savage | Spin 65 |
| 2. John Viola | Joe 65 |
| 3. Bill Gregor | Brew 62 |
| 4. Jack Cymerman | Molly 60 |
| 5. Mark Soper | Rose 59.5 |
| 6. Annette Foxon | Meg 59 |
| 7. Annette Foxon | Tammie 55 |
| 8. Bonnie Holland | Kierstie 49 |
| 9. Warren Mick | Tara 41 |
| 10. Kathy Klammer | Jasper 40 |

Pro/Novice

8 Dogs to the Post

| | 90 Possible Points |
|-------------------|--------------------|
| 1. Vergil Holland | Craig 61 |
| 2. Bernie Armata | Chris 59 |
| 3. Chalmers Means | Pip 56.5 |
| 4. Bill Gregor | Quill 46.5 |
| 5. Sylvia O'Kane | Dice 42 |

Ranch

6 Dogs to the Post

| | 90 Possible Points |
|-------------------|--------------------|
| 1. Barbara Armata | Kelly 67 |
| 2. Bernie Armata | Chris 60 |
| 3. Edith Overly | Skye 47 |
| 4. Ethel Conrad | Gael 41 |

Sheep were a challenge to pen all day. Noise was the biggest challenge.

Open

13 Dogs to the Post

| | 100 Possible Points |
|-------------------|---------------------|
| 1. Becky Peterson | Queen 85 |
| 2. Becky Peterson | Roy 74.5 |
| 3. Edith Overly | Dot 65 |

High Points Competition

Final Standings - 12 Trials/4 Per State

| | | |
|----------------------------|-------|-----|
| 1. Walt Jagger | Queen | 467 |
| 2. Eve Marschark | Spin | 439 |
| 3. Cheryl Jagger Williams | Nell | 429 |
| 4. Mike Canaday | Jill | 414 |
| 5. Cheryl Jagger Williams | Kim | 402 |
| 6. Dick Williams | Jesse | 398 |
| 7. Amanda Milliken | Hazel | 393 |
| 8. Beverly Lambert | Jet | 364 |
| 9. Mike Canaday | Patti | 355 |
| 10. Walt Jagger | Celt | 331 |
| 11. Beverly Lambert | Lark | 325 |
| 12. Dick Williams | Kate | 275 |
| 13. Roger Deschambeault | Jill | 257 |
| 14. Cheryl Jagger Williams | Fleet | 242 |
| 15. Eve Marschark | Don | 227 |
| 16. Mike Canaday | Sandy | 215 |
| 17. Amanda Milliken | Jack | 215 |
| 18. Carol Campion | Lady | 172 |
| 19. Lynn Deschambeault | Dandy | 164 |
| 20. Amanda Milliken | Boy | 163 |
| 21. Betty Levin | Kelty | 154 |
| 22. Pat Buckley | Bart | 152 |
| 23. Gene Sheninger | Robin | 149 |
| 24. Gene Sheninger | Meg | 142 |
| 25. Vergil Holland | Meg | 138 |
| 26. Vergil Holland | Kip | 136 |
| 27. Roger Deschambeault | Tyson | 131 |

Thank You

NEBCA would like to thank everyone who has very generously given of their time and their selves to help with or hold a trial. We especially would like to thank those who work in the sheep pen (a thankless, often dirty job), exhaust sheep or do any of the little things which go unnoticed, but which are neces-

sary to a well-run trial. We cannot begin to name everyone, but we would like to especially thank Dave Murray. Dave was at many trials this summer and always was in the sheep pen helping out. This young handler and his Dad, Dave, (our most loyal fan) deserve a big THANK YOU!

| | | |
|--------------------|----------|----|
| 4. Vergil Holland | Meg | 60 |
| 5. Vergil Holland | Kip | 59 |
| 6. Donald McCaig | Gael | 58 |
| 7. Ethel Conrad | Imp. Meg | 55 |
| 8. Gwen Cassel | Dash | 46 |
| 9. Paul Heidenberg | Lynn | 45 |
| 10. Carol Campion | Lady | 45 |

Best Gather: Edith Overly & Dot

Best Drive: Vergil Holland & Kip

Best Shed: Becky Peterson & Queen

Best Pen: Becky Peterson & Queen

Best Young Dog & Handler: Jack Cymerman & Molly (N/N)

Becky Peterson was the only competitor to get a shed or pen.

Zoo Musings - Sheep Shenanigans or Eric Learns His Lesson

by Amy Morss, Education
Volunteer, Burnet Park Zoo

Where else can you get poison ivy, bruises, soaking wet, wrassle sheep, tell bawdy shepherd jokes and get covered with manure . . . and all for free!? Why the Sheepdog Trials, of course! And I had the pleasure of engaging in all the above activities while spending a day in a pen with 40 sheep and 4 other nutty humans. My companions were Eric, Jim, Darryl, and Holly (first names only to protect the guilty) - and what a day we had.

It all began bright and early (6am or so) on Saturday, August 8th. We all arrived bleary-eyed (except Eric, who actually slept in his car overnight there because he was so excited for the big event) and fuzzy headed - not knowing quite what to expect. I think Ben and Charlotte planned it this way - early in the morn - hoping we'd still be in sleep mode and therefore agreeable to do just about anything they asked . . . to confuse us and our decision making. After we were fed and watered and at the peak of our sugar rushes, they presented the work options for the day. We could work with the judge, work in the holding pen or in the exhaust pen. Well, I knew working with the judge wasn't for me, too technical. I needed something more exciting (the exhaust pen sounded the opposite), something to wake me up and get me some 'hands on' experience. I picked the holding pen because it sounded fun and I like the crew I'd be working with. I hadn't seen Holly since my vet clinic days and we had catching up to do. Five people seemed like a lot to work in this pen - after all, how hard could it be to pull 5 sheep away from the herd? But I went along with it and tramped over to the pen to receive further instructions.

Dogs and owners were beginning to arrive. There were dogs of every size and color. I found this rather interesting - sheepdogs don't look alike. Bred for their herding abilities, it doesn't matter what they look like. The one thing these dogs do seem to have in common is that I-can't-wait-to-nip-at-your-heels look.

I'll be honest with you, sheep have never been my favorite farm animals. Rumor had it they are dumb, but I was willing to give them the benefit of the doubt. When we arrived at our pen, we found 40 sheep - adult females and some lambs - milling about in a very small area. They didn't look like the clean, white sheep I had seen at fairs - in fact, I wasn't sure I ever wanted to wear wool sweaters again after seeing these beasts, but we were here to work, not to shear wool.

Eventually the owner of the sheep came over to instruct us about how to sort the 5 sheep that would be let out per dog. Two with X's, 2 with dots and 1 lamb . . . hmmm, complications already. Not just any 5 sheep would do, there was a method to this madness. Still we were undaunted. After all, how hard could it be to get 5 sheep to go out of the pen into the arena which was filled with lush green grass? They had been grazing there earlier and surely would remember . . .

So the trials were about to begin and we started the task of separating our first load of sheep. This involved culling the correctly marked and right number of critters away from the herd, into the holding area, and then out with the dog.

We immediately realized, "Here sheepy, sheepy" wouldn't work and had to quickly come up with Plan B. We check for collars (found none), checked for grain to lure them (found

none), checked for crooks to prod them (found none) and began to panic. I remember thinking around this point that working with that judge was looking better and better . . . Well, here I was and we had to get these sheep out somehow. It seemed like physical force was the only answer. This meant literally picking them up and carrying them (no easy task) or grabbing the head and butt and dragging them. I could manage this with the lambs, but the big guys were left to my pals. And, even then, the herding instinct is so strong, they would do anything to get away from us (re: the bruises). Luckily Eric, Darryl, and Holly seemed to get a weird kick out of this game and were willing participants. Jim and I usually preferred to open gates, but an occasional body check was needed from us to stop an escaping animal.

As the morn progressed, I began to think the stupid sheep rumors might have some validity - clearly they did **not** remember the lush pasture, and their love for me was about equalling my love for them. And, oh yes, I neglected to mention they rather hated the dogs too. It seems this whole sheepdog thing works on a predator/prey deal, and they **are** smart enough to know they are the prey. Regardless, the morning trials went fairly well - a few mishaps, like one getaway sheep who decided to find her car in the parking lot (ask Ben about this one), but all in all, we pen-people did ok.

I was pleased to know that they did plan a lunch break, and as long as I could find a bathroom to wash up (by now the dogs were trying to herd me cause of my smell), I was sure I'd find delicious Scottish food to dive into. Sadly, though, I learned the Scottish aren't vegetarian (like me), and I'd be darned if I was gonna eat any-

thing made from those nasty critters I had been fighting all day. So, after a fine fare of french fries, I was ready to get back to work. Well, almost. Holly had been playing with a shepherd's whistle all morning, so I bought one for myself. In fact, we all did because she claimed it was so hard to use. Sheep may be dumb, but shepherds can't be because the whistle they have to use is very tricky. Truly . . . ask Darryl.

Anyway it was time to get back to work. The question was: would it rain? Actually it poured. And for any of you who have never been in a 10' by 10' pen with 40 sheep while it's pouring rain . . . well, I don't recommend it. Now we had to deal with the 'slip and slide' factor, something I think the sheep almost enjoyed. We were all rather tired by now (the sheep seemed to be getting bigger) and in our exhausted states we resorted to what every human does . . . humor. So began the dirty jokes, teasing and silly stories. Jim had decided that he could bore the sheep into listening and, by gosh, he could! We had Eric believing that certain sheep had a crush on him, and Darryl, well, he was still trying to learn that whistle.

Thus, the day was coming to a close. We were all tired, smelly, filthy, soaked and bruised (and I was covered with poison ivy, but didn't know it yet). Did we have fun? Would we do it again? Are sheep stupid? Absolutely, in a flash, and does a bear . . . ?

I know you're still wondering what lesson Eric learned that day. Well, I'll let him tell you the details, but here's a hint: rubber gloves might not be a bad idea when handling the backsides of sheep!

Spring Valley Nursery Trial Strafford, VT August 29-30, 1992

by Lin Reuther

Trial Manager, Stephen Wetmore, promised a fun, relaxed two-day nursery trial for handlers, and that was what we all had. What a terrific time! Weather for both days was cool and partly cloudy, perfect for sheep and dogs. The course was run on the steep hill behind Steve and Sarah's house, with heavy pressure on the right (exhaust field side). The sheep worked well and evenly if the dog kept back and covered the pressure. All in all, a challenging but fair course.

It's always the "little touches" that make something special, and Steve's trials had lots of these; after the runs Saturday, Steve let Novice handlers have a practice run again on the course; ribbons were awarded to ten places (Novice handlers really appreciate that!), Steve served everyone a delicious blueberry (homegrown!) pancake breakfast with his own maple syrup on Sunday morning. The camaraderie, encouragement, and good time enjoyed by all go a long way to keeping people trialing!

Saturday, August 29 - Judge: Betty Levin

Novice/Novice

1. Tim Milleville
2. Paul Quirk
3. Joe Kennedy
4. Dee Woessner
5. Jack Cymerman
6. Lois Burke
7. Michael Dathe
8. Warren Mick
9. Lin Reuther
10. Lin Reuther

80 Points - 17 Dogs to Post

- | | |
|--------|----|
| Peg | 72 |
| Bob | 72 |
| Hank | 54 |
| Abbie | 53 |
| Molly | 51 |
| Meg | 44 |
| Tess | 44 |
| Tara | 39 |
| Jaff | 37 |
| Bobbie | 30 |

Pro-Novice

1. Chalmers Means
2. Lynn Deschambeault
3. Steve Wetmore
4. Tim Milleville
5. Lin Reuther
6. Denise Leonard
7. Lynn Deschambeault
8. Jean Kennedy
9. Tim Milleville
10. Bea Quirk

80 Points - 13 Dogs to Post

- | | |
|-------|----|
| Pip | 63 |
| Pip | 61 |
| Nan | 59 |
| Roy | 58 |
| Jen | 58 |
| Meg | 55 |
| Jesse | 52 |
| Sue | 49 |
| Loch | 46 |
| Jay | 43 |

Ranch

1. Steve Wetmore
2. Denise Leonard
3. Bob Thrasher

90 Points - 3 Dogs to Post

- | | |
|-------|----|
| Nell | 64 |
| Nikki | 50 |
| Cash | 36 |

Sunday, August 30, 1992 - Judge: Becky Peterson

Novice/Novice

1. Michael Dathe
2. Lois Burke
3. Loni Tuttle
4. Lin Reuther

80 Points - 14 Dogs to Post

- | | |
|---------|------|
| Tess | 65 |
| Meg | 64.5 |
| Kricket | 61 |
| Jaff | 60 |

5. Warren Mick
6. Tim Milleville
7. Joe Kennedy
8. Bea Quirk
9. Jack Cymerman
10. Maria Mick

- | | |
|--------|------|
| Tara | 60 |
| Peg | 59 |
| Hank | 55 |
| | 55 |
| Mollie | 53 |
| Winn | 40.5 |

Pro-Novice

1. Rich Seaman
2. Lynn Deschambeault
3. Denise Leonard
4. Lynn Deschambeault
5. Tim Milleville
6. Jean Kennedy
7. Betty Levin
8. Ann Bennett
9. Bea Quirk
10. Lin Reuther

80 Points - 12 Dogs to Post

- | | |
|-------|------|
| Socks | 67 |
| Pip | 62.5 |
| Meg | 62 |
| Jesse | 61 |
| Loch | 60 |
| Sue | 57.5 |
| Tay | 55.5 |
| Nell | 46 |
| Jay | 31 |
| Jen | Ret. |

Ranch

1. Tim Milleville
2. Denise Leonard
3. Jean Kennedy
4. Steve Wetmore
5. Steve Wetmore
6. Chalmers Means
7. Bob Thrasher
8. Betty Levin

90 Points - 8 Dogs to Post

- | | |
|-------|------|
| Roy | 65 |
| Nikki | 60 |
| Sue | 59.5 |
| Nell | 46 |
| Nan | 44 |
| Pip | 43 |
| Cash | 33 |
| Sweep | 32 |



Upcoming Clinics

This listing is provided as a service to NEBCA members but in no way represents an endorsement of the trainers or sponsors of these events by NEBCA News or the Northeast Border Collie Association.

October 31-November 1: Training Clinic, Central PA, near State College and Penn State University. Instructor Cheryl Jagger Williams. For more information call Bill or Joyce Gregor at (814)692-8279.

October 31-November 1: Bruce Fogt Training/Handling Clinic, West Redding, CT. For more information, contact Ken Sigel, 39 Putnam Park Road, West Redding, CT 06896, (203)938-9669.

November 7-8: Training Clinic instructed by Eve Marschark, Ivyrose Farm, Bedminster, PA. For more information

contact Eve Marschark, P. O. Box 397, Bedminster, PA 18910, (215)795-2023.

November 13-15: Jack Knox Training Clinic, Edgewater, MD. For information send SASE to Virginia Dove, PO Box 491, Edgewater, MD 21037.

November 14-15: Sheepdog Training Clinic. Cheryl Jagger Williams instructing. All ability levels. 20 dog limit. Contact Barbara Starkey, P. O. Box 250, Galena, MD 21635, (410)648-5571.

November 21-22: Stockdog Training Clinic with Vergil Holland, Autumn Hill Farm, Mt. Airy, MD. Limit 20 dogs. Pre-entry only. Spectators welcome. Contact Nancy Starkey at (301)253-4732.

New Jersey State Sheep Dog Trial at Fosterfields - Morristown, NJ September 5-7, 1992

by John Atkinson

I once went out for a meal, to a great restaurant with great company. We went on to a club and had a great time. We did it again three weeks later, and yet it was not the same.

I once met some friends for a reunion. We had a fantastic time. It was so good we decided to get together and do it again; but it was not as good.

I once went to judge a Sheepdog Trial in America, at Fosterfields in Morristown, NJ. I went away thinking how great was the trial, the organization, the facilities, the friendly atmosphere of the competitors and the crowds that came to watch and the nothing-is-too-much-trouble attitude. I went to judge it again twelve months later and, do you know, it had improved and was even better.

This did not occur by accident, or that I had drank more the second time around. It came about by organization and hard work and for this we must thank the Sheninger-Fossetta combination. To Gene and Lynne Sheninger, to Bob and Linda Fossetta, and the Friends of Fosterfields, we should say thank you for putting on a trial that created warmth and friendliness. And we should thank each other, for that is what our sport should be about. Don't get me wrong. If you win a prize of any sort, then savor and enjoy it. Enjoy the trip home, enjoy the evening. But, if you don't do so well, perhaps because you had a bad bunch of sheep and many other reasons, then, so be it. Take it on the chin, and get yourself ready for the next round.

The running itself went very well. Although I must say that in the Novice/Novice some of the dogs were not yet ready to

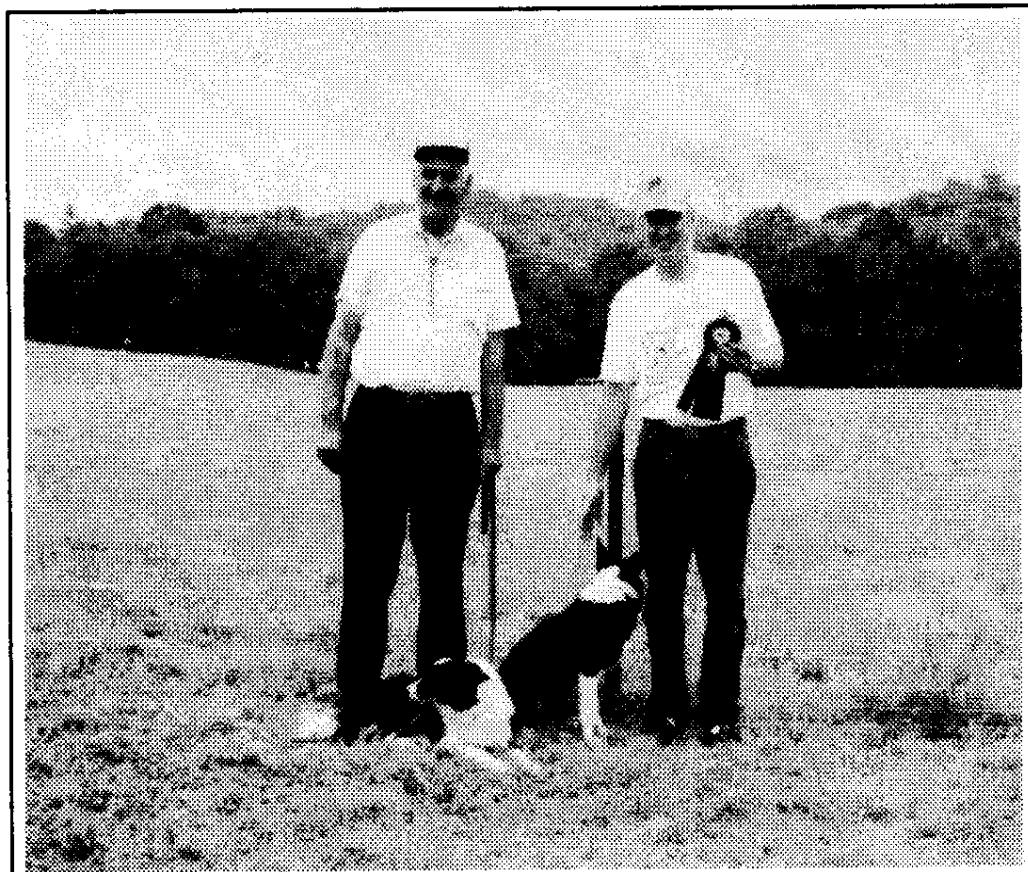
be on a trial field. While I understand they are trying to gain experience at trialing, it should not be attempted with dogs that in some cases were not even trained in basic obedience, such as lying down when they were told. To run a dog like this will do more harm than good. It will soon get to know what it can and can't get away with, and so you are creating many problems for yourself. Plus the fact that you are being unkind to the sheep and disrespectful to the owner of the sheep, by chasing them around Willie Nillie. Until your dog will outrun properly, stop when told, walks up when told, goes right (away) and left (come by) when told, don't go onto a trial field.

The Open Stake was excellent. An uphill course which gave the handlers as well as the spectators behind a good view of the whole course. Although the cross-drive panels were a bit tricky to negotiate and caused a few problems. Despite the dogs losing sight of the sheep on the outrun, either left or right, most dogs had little difficulty in getting behind the sheep.

The sheep had been well dogged but could be a little sensitive if pushed too hard or, on the other hand, would soon get the measure of the dog if it was too weak. Which lent to an ideal situation, where both the forceful dog that could be handled, was equal to the kind gentler dog who could push on when asked and which was reflected in the results.

I did have one regret with the whole trial, and that was that I could not run a dog myself.

Trials like Fosterfields, which has been as good both years, and the Pittsburgh Township Trial in Canada which I judged three years ago must be



NJ State Champion, Walt Jagger and Queen, and Reserve Champion, Dick Williams and Jess.

a pleasure to run in. And one day I hope I can bring a dog and just do that.

Who said "Wait until you get to the post!"!!

*Thank you All,
John Atkinson*

NOVICE/NOVICE - 9/5/92

14 Dogs to the Post

1. Tim Milleville
2. Mark Soper
3. Sharon Nunan
4. Warren Mick
5. Nancy Starkey
6. Betty McKeown
7. Nancy Ortiz
8. Heather Murray
9. Lois Burke
10. Jack Cymerman

80 Points Possible

| | |
|---------|----|
| Peg | 70 |
| Rose | 66 |
| Jeepers | 61 |
| Tara | 58 |
| Bunk | 54 |
| Fax | 53 |
| Vega | 49 |
| Nell | 42 |
| Meg | 41 |
| Molly | 26 |

PRO/NOVICE - 9/5/92

9 Dogs to the Post

1. Amanda Milliken
2. Mark Bustard
3. Tim Milleville
4. Bruce Smart
5. Tim Milleville
6. Ken Sigel
7. Carol Campion
8. Sylvia Murray
9. Sally Lacy

80 Points Possible

| | |
|-------|----|
| Rufus | 72 |
| Jed | 72 |
| Peg | 70 |
| Moss | 68 |
| Loch | 58 |
| Mac | 53 |
| Dave | 52 |
| Duke | 41 |
| Tru | 18 |

RANCH - 9/5/92

8 Dogs to the Post

1. Tim Milleville
2. Walt Jagger
3. Bernie Armata
4. Ken Sigel
5. Bob Thrasher
6. Sue Smith

90 Points Possible

| | |
|-------|----|
| Roy | 72 |
| Roy | 70 |
| Chris | 68 |
| Ben | 66 |
| Cash | 60 |
| Lass | 44 |

continued page 9

BALLOT FOR NEW SLATE OF NEBCA OFFICERS

This is an election year for the Officers of the Northeast Border Collie Association. Below is the slate recommended by the Nominating Committee. Please check the candidate's name or write in a candidate in the space provided.

Return your ballot by January 10, 1993 to Lynn Deschambeault, RR 1, Box 897B, Bridgton, ME 04009, or bring it to the Annual Meeting.

PRESIDENT:

- ☐ Dick Williams
- ☐ Write-in _____

VICE PRESIDENT:

- ☐ Steve Wetmore
- ☐ Write-in _____

SECRETARY:

- ☐ Kathy Deschambeault
- ☐ Write-in _____

TREASURER:

- ☐ Barbara Armata
- ☐ Write-in _____

BOARD OF DIRECTORS:

[Vote for five]

- ☐ Mike Canaday - NY
- ☐ Lynn Deschambeault - ME
- ☐ Edgar Gould - MA
- ☐ Karen Greenlees - Canada
- ☐ Dayle Hamilton - CT
- ☐ Vergil Holland - NY
- ☐ Denise Leonard - MA
- ☐ Cheryl Jagger Williams - PA
- ☐ Write-in _____
- ☐ Write-in _____

- - - - - (*fold*) - - - - -

**Lynn Deschambeault
NEBCA Secretary
RR 1, Box 897B
Bridgton, ME 04009**

- - - - - (*fold*) - - - - -

Keystone State Sheep Dog Trials Bucks County Horse Park, Revere, PA September 26-27, 1992 Judge: Bruce Fogt

by Eve Marschark

Did you ever take a cool shower with your clothes on for two days? We all thought we were in England running our dogs! Great weather for them! It was amazing how people kept a positive attitude in spite of the rain. Thanks to many good friends who pitched in and maintained the rhythm of the trial, we managed to fit in 73 runs each day with clockwork-like precision.

The course was a 350 yd. out-run downhill over a series of three grassy, level tiers which are used for dressage and carriage competitions at the Bucks County Horse Park. Each tier was ten or more feet below the next. The grounds were meticulously manicured and the field totally fenced in which allowed the sheep to graze freely at night. As the fetch progressed upwards, there were times when both dog and sheep were out of sight. This element of suspense came into play again at the first and last legs of the drive with the 200+ yd. cross-drive fully visible on the center tier (which is their polo field).

Our Judge, Bruce Fogt, commented that even though the sheep were quite challenging, he saw some excellent handling by both the Open Class and the Nursery Handlers and their dogs. The Judge's Choice award went to Chalmers Means and his dog Pip for their good handling of some difficult situations. The sheep were generously donated by Gene Sheninger and could be described as . . . well, they were . . . sheep! And our hired helpers

in the holding pens worked steadily throughout the entire weekend. Never missed a beat! They were great.

A \$1200 purse was split for both days for the top ten in Open, with dog food donations to all classes from NutroMax, Dads and Hills.

For dinner Saturday night, the Pony Club put on a gourmet dinner of smoked brisket, BBQ chicken and homemade desserts (trifle, pies, cakes). The crowd went wild and passed around a collection plate in thanks to our chefs. (I think the Club will agree to cook again next year based on a healthy profit margin.) Len Marschark's now famous venison roast was one of the many delights at the Pot Luck Friday night at Ivyrose Farm.

The Eye Clinic was a big success. Dr. Lionel Rubin reported that of the 75 Border Collies he examined Saturday, not one case of PRA or CEA was found. Only injury related findings, none that were genetic. This does not mean that we need not look at eyes anymore, but rather we have good breeding stock now; let's keep up the vigil and protect future generations.

I am very grateful to have such good friends to help me put on this trial. Thanks a lot to you all!

There is a beautiful view from the handlers post of mountain vistas, colorful foliage, distant towns and cathedrals - but you'll all just have to come back again next year to see it!



Eve Marschark's Spin

Photo by Barbara Augello

| | | |
|------------------|---------|------|
| 2. Nancy Ortiz | Vega | 69 |
| 3. Bill Gregor | Brew | 69 |
| 4. Ed Gebauer | Jake | 69 |
| 5. Jack Cymerman | Molly | 65 |
| 6. Paul Quirk | Bob | 62.5 |
| 7. Roger Crayton | Maggie | 61 |
| 8. Nancy Starkey | Bunk | 58 |
| 9. Barb Starkey | Jet | 46 |
| 10. Sharon Nunan | Jeepers | 42 |

| Pro-Novice | 80 Possible Pts. | 10 Dogs |
|------------------|------------------|---------|
| 1. Sally Lacy | Tru | 69.5 |
| 2. Betty Levin | Tay | 66 |
| 3. Mike Canaday | Sam | 64 |
| 4. Mike Canaday | Robin | 62 |
| 5. Bill Gregor | Quill | 57 |
| 6. John Roche | Kit | 55.5 |
| 7. Bea Quirk | Jay | 51 |
| 8. Bev Lambert | Dan | 50 |
| 9. Allison Huff | Ben | 36 |
| 10. Allison Huff | Lyn | DQ |

| Ranch | 90 Possible Pts. | 8 Dogs |
|-------------------|------------------|--------|
| 1. Walt Jagger | Roy | 84 |
| 2. Chalmers Means | Pip | 73 |
| 3. Sue Smith | Lass | 63 |
| 4. Ken Sigel | Ben | 60 |
| 5. Ed Gebauer | Flo | 59 |
| 6. Ken Sigel | Mac | 50 |
| 7. Bob Thrasher | Cash | 36 |
| 8. Steve Wetmore | Nan | 22 |

SATURDAY, SEPT. 26, 1992

| Novice/Novice | 80 Possible Pts. | 12 Dogs |
|---------------|------------------|---------|
| 1. Mark Soper | Rose | 70.5 |

continued page 11

The NEBCA Library

by Lin Reuther

I am pleased to report that the Lending Library has been doing a booming business! Our most popular item is Glyn Jones' video, "Come Bye! And Away!" and deservedly so as it very clearly shows how to take a dog from its first introduction to sheep through driving. Since we have been running a waiting list on this tape, I'm hoping to purchase a second copy soon. [At the last NEBCA meeting it was voted to purchase more copies of this video so as to shorten the wait for it.] We've gotten a lot more book requests now that books are free - so, keep these library requests coming! As soon as they are released, we plan to purchase two new videos: Glyn Jones' second (more advanced) video, and a Scott Lithgow video on training stockdogs, with cattle work emphasized.

New Additions to the Library:

The Blue Riband of the Heather, The Supreme Champions 1906-1988, by E. B. Carpenter. A fascinating book discussing the history of the International Sheepdog Trials, and profiling each winner, its bloodlines, etc. since 1906. It traces the similarities and changes in Border Collie conformation and style this century. Wonderful photographs.

The Hill Shepherd, by Edward Hart. This book describes the life of a typical British hill shepherd - the daily chores, seasonal activities, home life, hobbies, special events. A tribute to the men, women, and dogs who started all this! Currently out-of-print. A classic.

Training and Working Dogs for Quiet Confident Control of Stock, by Scott Lithgow. Lithgow worked primarily with cattle, but his book is excellent for sheep also. Full of good dia-

grams and information. However, the most fascinating sections discuss canine psychology, how the canine brain develops through puppyhood leading to certain ages in which the pup is most receptive to learning things, etc. A lot of detail on when to socialize, train, etc. Even the most seasoned handler would get a lot out of this information! And it's our only book dealing with cattle work.

Rural Route Video: "Training and Working a Border Collie" - a 2-hour tape by Martin Penfold, covering all basic commands and training techniques. Beautiful scenes of dogs working in Nova Scotia, the U.S. and U.K. (it'll whet your travel appetite!). Ranch Dog Trainer magazine said: "A newcomer will be left with no doubt as to what the training phrases mean . . . overall presentation is valid and clear . . . final section contains runs from the British International . . . highly recommended to those with young dogs." While this video does not (in my opinion) have the step-by-step detail of the Jones' video, it is excellent and very helpful for a novice.

So, let me know if you'd like to borrow any of our new selections, or any of the current holdings. Fall and winter is a great time to read and watch videos!

Many thanks to our numerous borrowers who have all promptly returned the videos and books. Remember, videos are \$3.00 each, loaned for 2 weeks; books are free, loaned for 3 weeks.

Hope to hear from you soon!

BOOKS

Training the Sheep Dog

E. B. Carpenter - *The Border Collie: Basic Training for Sheepwork*

Tony Iley - *Sheepdogs at Work*

Glyn Jones - *A Way Of Life*

Tim Longton - *The Sheep Dog: Its Work and Training*

Pope Robertson - *Anybody Can Do It*

Carroll Shaffner - *Training A Working Collie*

Mari Taggart - *Sheepdog Training; An All-Breed Approach*

John Templeton - *Working Sheep Dogs - Management and Training*

Luke Pasio - *Heather Jean: The Working Sheep Dog*

General/Health

Janet Larson - *The Versatile Border Collie*

Marjorie Quarton - *All About the Working Border Collie*

Eddie Straiton - *Dog Ailments - Recognition and Treatment*

Shepherd's Life

G. M. Anderson - *Times Remembered*

John Barrington - *Red Sky At Night*

Louis Irigaracy - *A Shepherd Watches, A Shepherd Sings*

Michael Mathers - *Shepherders - Men Alone*

Fiction/Children's

James Herriott - *Dog Stories*

James Herriott - *Only One Woof*

Dick King-Smith - *Balse the Gallant Pig*

Miscellaneous

Jane Burton - *A Dog's Life, A Year in the Life of a Dog Family (photos)*

Betty Cavanna - *The First Book of Wool*

Olivia Mills - *Practical Sheep Dairying*

VIDEOS

1989 British International Supreme (Parts I and II)

1988 International Supreme (Parts I and II)

"Getting the Right Start" - R & R Graves (Parts I and II)

"Training the Working Stock Dog" - Elvin Kopp (Parts I and II)

"Come Bye! And Away! The Early Stages of Sheep Dog Training" - Glyn Jones

"Training the Working Border Collie" - Tony Collins

University of Guelph Series: Part 1 - "Selection and Early Training of Border Collies"; Part 2 - "Basic Training for Sheep Work"; Part 3 - "Advanced Training For Sheep Work"

Lin Reuther

RR 1, Box 1147

Pittsford, VT 05763

Upcoming Trial Dates

The following open trials are qualifying for NEBCA points. Nursery Trials are NEBCA qualified as long as the Nursery Trial Guidelines are followed and the Trial Manager is a NEBCA member.

* NEBCA Qualifying Open Trial # New Trial

1993 Trials:

** # October 17-18: African Lion Safari Trial, near Guelph, Ontario. Two 1-day Open and Nursery Trials. Contact

Amanda Milliken, RR 2, Kingston, Ontario K7L 5H6 (613)546-1451.

** October 23-25: Cumberland Valley Open Trial, Carlisle, PA. Two one-day Open Trials; Open Ranch also. Contact Nathan Mooney, 245 Alters Road, Carlisle, PA 17013 (717)249-5695.

November 7-8: Maplewood Nursery Trial, Colchester, CT. Contact Carol Campion, 99 Grayville Rd., Amston, CT 06231 (203)537-1386.

NJ State Trial

continued

NOVICE/NOVICE - 9/6/92

| | |
|---------------------|--------------------|
| 13 Dogs to the Post | 80 Points Possible |
| 1. Nancy Ortiz | Vega 68 |
| 2. Jack Cymerman | Molly 68 |
| 3. Betty McKeown | Fax 53 |
| 4. Mark Soper | Rose 52 |
| 5. Maria Mick | Winn 51 |
| 6. Heather Murray | Meg 49 |
| 7. Sharon Nunan | Jeepers 49 |
| 8. Lois Burke | Meg 46 |
| 9. Joanne Krause | Meg 42 |
| 10. Nancy Starkey | Bunk 41 |

PRO/NOVICE - 9/6/92

| | |
|---------------------|--------------------|
| 10 Dogs to the Post | 80 Points Possible |
| 1. Ken Sigel | Mac 71 |
| 2. Bruce Smart | Moss 70 |
| 3. Carol Campion | Dave 68 |
| 4. Mark Bustard | Jed 68 |
| 5. Sylvia Murray | Duke 65 |
| 6. Tim Milleville | Loch 63 |
| 7. Sally Lacy | Tru 58 |
| 8. Becky Peterson | Gem 35 |

RANCH - 9/6/92

| | |
|---------------------|--------------------|
| 10 Dogs to the Post | 90 Points Possible |
| 1. Walt Jagger | Roy 81 |
| 2. Tim Milleville | Roy 69 |
| 3. Ken Sigel | Mac 66 |
| 4. Barbara Armata | Kelly 59 |
| 5. Sue Smith | Lass 57 |
| 6. Ken Sigel | Ben 57 |
| 7. Larry Campion | Ky 56 |
| 8. Bob Thrasher | Cash 53 |
| 9. Chalmers Means | Pip 37 |
| 10. Bernie Armata | Chris 33 |

Most Promising Young Dog & Handler: Tim Milleville & Roy

OPEN - 9/6/92

| | |
|---------------------------|---------------------|
| 33 Dogs to the Post | 100 Points Possible |
| 1. Dick Williams | Jess 97 |
| 2. Walt Jagger | Queen 96 |
| 3. Mark Bustard | Boy 94 |
| 4. Eve Marschark | Spin 94 |
| 5. Bernie Armata | Chris 93 |
| 6. Cheryl Jagger Williams | Nell 92 |
| 7. Cheryl Jagger Williams | Fleet 92 |
| 8. Walt Jagger | Jill 88 |
| 9. Gene Sheninger | Robin 88 |
| 10. Becky Peterson | Queen 86 |

USBCA NURSERY - 9/7/92 (Judge: Walt Jagger)

| | |
|--------------------|----------|
| 3 Dogs to the Post | |
| 1. Mark Bustard | Nick 72 |
| 2. Amanda Milliken | Rufus 71 |
| 3. Carol Campion | Dave 52 |

OPEN - 9/7/92

| | |
|---------------------|---------------------|
| 31 Dogs to the Post | 110 Points Possible |
| 1. Amanda Milliken | Hazel 104 |
| 2. Walt Jagger | Celt 102 |

| | |
|---------------------------|----------|
| 3. Gene Sheninger | Meg 98 |
| 4. Walt Jagger | Queen 93 |
| 5. Cheryl Jagger Williams | Fleet 93 |
| 6. Cheryl Jagger Williams | Kim 91 |
| 7. Mark Bustard | Nick 90 |
| 8. Dick Williams | Jess 89 |
| 9. Becky Peterson | Roy 88 |
| 10. Larry Campion | Nip 84 |

The following awards were presented based on the two-day combined scores:

Best Gather: Dick Williams & Jess

Best Drive: Dick Williams & Jess

Best Pen: Becky Peterson & Fly

Best Shed: Amanda Milliken & Hazel

High Points Champion: Walt Jagger & Queen - 189

High Points Reserve Champion: Dick Williams & Jess - 186

Mid-Atlantic High Point Dog Award: Walt Jagger & Queen

A pastel portrait of the winning dog was awarded to the High Points Champion and a pen & ink drawing was awarded to the Reserve Champion. These beautiful works of art were painted by Linda S. Fossetta of Morristown, NJ. Linda finished the two portraits and we presented them to Walt and Dick at the Keystone State Trial on September 27.

The Mid-Atlantic Border Collie Association donated a plaque for the High Scoring Mid-Atlantic Dog. This dis-

inction was earned by Walt Jagger & Queen.

Thank you to all who helped out at the trial, setting out and exhausting sheep, announcing, scorekeeping, etc. A special thanks is extended to the Fossettas for all their help in organizing the trial, Natural Life for donating dog food for the Nursery and Open Classes and, last but not least, to the Sheep Crew and the Cook College of Agriculture volunteers who spent three long days in the sheep pen.

Lynne & Gene Sheninger



THE WORKING BORDER COLLIE MAGAZINE

14933 Kirkwood Road, DeptNJ
Sidney, Ohio 45365
(513)492-2215

Training Articles * Veterinary Column
Livestock Guard Dog Articles * Feature Articles
Trial & Clinic Dates * Breeder's Directory

Today's Magazine For The Working Border Collie

US Funds Only

\$25.00 / year - US
\$35.00 / year - Canada

Use this membership form for new members or a renewal. Renewals are due on January 1, 1993 for current members. Be sure to send it to Lynn Deschambeault. Any NEW member who joined after July 1, 1992 need not renew until January 1, 1994. The 1993 Breeders List Deadline is January 31, 1993. *

Northeast Border Collie Association Membership Application

NAME _____

DATE _____

ADDRESS _____

CITY/STATE _____

ZIP CODE _____

PHONE _____

BREEDERS LISTING:

(maximum five lines)

Mail to:

Lynn Deschambeault
RR 1, Box 897B
Bridgton, ME 04009

Annual Membership -- Individual \$10.00 _____

Family or Farm -- \$15.00 _____

Annual Breeders Directory -- \$10.00 _____

Make checks payable to NEBCA

TOTAL _____

☐

Please check box if you do not want your name released to others for mailing list purposes.

* Subscription to the Breeders Directory runs for the entire year. It entitles the Breeder to be listed in every issue of the NEBCA News, the NEBCA Calendar for the upcoming year, and all NEBCA promotional literature.

CLASSIFIED:

Classified ads cost \$3.00 per issue or \$10.00 per year (four issues and all supplements - no changes) for 50 words or less. \$.20 per word will be charged for longer ads. Sorry, we can no longer accept ads by telephone. Checks or money order must accompany ad.

CUSTOM BORDER COLLIE TRAINING SERVICES AVAILABLE: private lessons, clinics and exhibitions. Pups through started dogs available. Cheryl Jagger Williams, RR 1, Box 1374, Hop Bottom, PA 18824 (717)289-4733.

MERLYNN KENNELS Border Collies and Kathadin Hair Sheep. Merle and black and white puppies and occasionally started dogs, all breeding stock OFA certified and eye checked. Proven producers of trial and obedience winners.

Kathadin Hair Sheep originated in Maine, excellent for working dogs, no shearing or tail docking necessary. Lynn Deschambeault, Merlynn Kennels, RR 1, Box 897B, Bridgton, ME 04009 (207)452-2898.

GLASS PLUS: Featuring custom made stained glass Border collies; single Border Collies, Border Collie and sheep, heads, plaques, suncatchers, etc. A large variety of sheep items as well as other breed dogs available. For information call or write Ellen Squier, 198 Rose Hill Rd., Portland, CT 06480 (203)342-4081.

BORDER CORNER, Border Collie specialty shop featuring training books, videos and gifts. Kathy Kemper, 212

Salem Drive, Everman, TX 76140 (817)568-2515.

BORDER COLLIE TRAINING SERVICES for dog & handler. Puppies thru started & trained dogs. Eve Marschark, Ivyrose Farm, Box 397, Bedminster, PA 18910 (215)795-2023.

THE DOG HOUSE, whistles, lanyards, training books, imported crooks, training videos. Francis Raley, Rt. 1, Box 14A, Crawford TX 76638, (817)486-2500.

NATIONAL DOG REGISTRY licensed tattooing is being offered by Applegarth Border Collies. A \$35.00 lifetime registration fee plus a \$10.00 tattooing fee per dog covers all dogs you'll ever own. Quick,

painless, takes 2-3 minutes. Very easy to add dogs and transfer ownership also. Give your dog a way home and give yourself peace of mind. Contact Jan Kubas (412)836-2738 evenings.

BORDER COLLIE PUPPIES out of Beverly Lambert's Kate (mother of Lark, 1990 NEBCA High Points Champion, 1991 Reserve) and Jet, winner of the Blue Ridge Open and many other trials. Both parents OFA good. Born 7/27/92, eyes cleared. Also pups out of Boot and Doug McDonough's Tweed. Born 7/18/92. All puppies guaranteed. Beverly Lambert (207)525-3223.

PUPS FOR SALE out of MINDY (Peterson's FLY x
continued page 11

Keystone State Trial *continued*

USBCHA Nursery

| | | |
|-----------------|-------|----|
| 1. Mike Canaday | Robin | 61 |
| 2. Ken Sigel | Mac | 50 |
| 3. Bev Lambert | Dan | DQ |

Open 100 Possible Pts. 40 Dogs

| | | |
|---------------------------|-------|------|
| 1. Eve Marschark | Spin | 96 |
| 2. Cheryl Jagger Williams | Kim | 95.5 |
| 3. Gene Sheninger | Nap | 93.5 |
| 4. Bev Lambert | Lark | 93 |
| 5. Carol Campion | Lady | 93 |
| 6. Eve Marschark | Don | 93 |
| 7. Mike Canaday | Patti | 92 |
| 8. Larry Campion | Nip | 90.5 |
| 9. Duff George | Meg | 90.5 |
| 10. John Roche | Kep | 89.5 |

| | |
|---------------------|------------------------|
| Best Pen | Gene Sheninger & Robin |
| Best Shed | Steve Wetmore & Mirk |
| Best Drive | Duff George & Meg |
| Best Outwork | Eve Marschark & Spin |

SUNDAY, SEPTEMBER 27, 1992

Novice/Novice 80 Possible Pts. 14 Dogs

| | | |
|-------------------|---------|------|
| 1. Nancy Ortiz | Vega | 70.5 |
| 2. Roger Crayton | Maggie | 69 |
| 3. Mark Soper | Rose | 68 |
| 4. Paul Quirk | Bob | 65 |
| 5. Nancy Starkey | Bunk | 62 |
| 6. Sharon Nunan | Jeepers | 61 |
| 7. Ed Gebauer | Jake | 60.5 |
| 8. Barb Klein | Ness | 56 |
| 9. Heather Murray | Meg | 54 |
| 10. Barb Starkey | Jet | 51 |

Pro-Novice 80 Possible Pts. 10 Dogs

| | | |
|--------------------|-------|----|
| 1. Sally Lacy | Tru | 76 |
| 2. Allison Huff | Lyn | 73 |
| 3. Bill Gregor | Quill | 65 |
| 4. Betty Levin | Tay | 63 |
| 5. Mike Canaday | Robin | 62 |
| 6. Beverly Lambert | Dan | 62 |
| 7. John Roche | Kit | 39 |
| 8. Bea Quirk | Jay | 32 |
| 9. Allison Huff | Ben | DQ |
| 10. Mike Canaday | Sam | DQ |

Ranch 90 Possible Pts. 9 Dogs

| | | |
|-------------------|-------|------|
| 1. Sue Smith | Lass | 77.5 |
| 2. Walt Jagger | Roy | 46 |
| 3. Ken Sigel | Ben | 44 |
| 4. Chalmers Means | Pip | 44 |
| 5. Ken Sigel | Mac | 44 |
| 6. Ed Gebauer | Flo | 41 |
| 7. Bob Thrasher | Cash | 41 |
| 8. Steve Wetmore | Nan | 35 |
| 9. Mike Canaday | Robin | 22 |

Open 100 Possible Pts. 40 Dogs

| | | |
|------------------|-------|----|
| 1. Mike Canaday | Patti | 93 |
| 2. Eve Marschark | Spin | 92 |

| | | |
|---------------------------|-------|------|
| 3. Cheryl Jagger Williams | Nell | 92 |
| 4. Henry van der Merwe | Fly | 91 |
| 5. Cheryl Jagger Williams | Fleet | 90.5 |
| 6. Eve Marschark | Don | 89.5 |
| 7. Walt Jagger | Queen | 89.5 |
| 8. Barb Armata | Kelly | 89.5 |
| 9. Sue Smith | Lass | 89.5 |
| 10. Dick Williams | Kate | 85.5 |

| | |
|---------------------|----------------------|
| Best Pen | Betty Levin & Sweep |
| Best Outwork | Dick Williams & Kate |
| Best Shed | Mike Canaday & Patti |
| Best Drive | Duff George & Jim |

Judge's Choice Chalmers Means & Pip

High Point Champion: Eve Marschark & Spin - 188 pts.

High Point Res. Champion: Cheryl J. Williams & Kim - 185.5

Mid-Atlantic High Point Dog Award: Eve Marschark & Spin

NEBCA Jackets

Jackets are being offered to interested members. Price will be approximately \$50. Will have Northeast Border Collie Association and Dog on back (can also be personalized) and should be available at the Annual Meeting. For more information, contact Dick Williams, RR 1 Box 1374, Hop Bottom, PA 18824, (717)289-4733.

CLASSIFIED

continued

DANDY) and DOC (sire of my JOLLY). These are well socialized pups out of trial & cattle working parents. Dam has placed in Open Trials and is OFA cert & PRA neg; sire works on a dairy farm, hasn't been x-rayed but I have a daughter of his that is OFA good + PRA neg. These pups are all classically marked: 2 are black & white and 1 blue merle. Call (207)452-2898. Lynn Deschambeault, RR#1 Box 897B, Bridgton, ME 04009.

PUPS FOR SALE whelped 8/24/92 out of Dayle Hamilton's HEIDI (Edgar Gould's Jess & Roy) and Walt Jagger's CELT. Dayle Hamilton (201)264-6348.

FOR SALE: Ready to start - 8 month old smooth-coated, split white faced male B.C. Well socialized, keen and eager to work. Should be a natural outrunner and easy to train. Dam is especially good outrun-

ner with tremendous balance. Sire: Imported Loch - son of Viv Billingham's Holly & Geoff Billingham's Cap. Dam: Imported Gwynn - daughter of Merion Jones "Spot" - 1989 International winner (pictured on cover of Blue Riband of the Heather) and granddaughter of Glyn Jones famous Bwlch Bracken. Parents hips and eyes certified clear. Contact Carol Campion 203-537-1386.

Border Collie Rescue Services

Patty Allison (ME, VT, NH, MA, CT, NY)
RR 1, Box 665
Harrison, ME 04040
(207)583-2353

Sharon Nunan (PA)
3329 Foulk Road
Boothwyn, PA 19061
(215)497-4378

Nancy Cox Starkey (MD)
12895 Colonial Drive
Mt. Airy, MD 21771
(301)253-4732

BREEDERS DIRECTORY

This listing of breeders of Border Collies is for informational purposes only and in no way represents an endorsement of these breeders by the Northeast Border Collie Association. Responsible Breeders would be very happy to provide references to anyone intending to use their services. Only Breeders who subscribed before the deadline of January 31, 1992 are listed. Minor changes to addresses during the year will be accommodated, but there will be no additions.

| | | | | | |
|--|---|--|--|---|--|
| Karla Bock & Bob Basile Hoof & Paw Farm RFD 1, Box 85 New Sharon, ME 04955 (207)778-3903 | Edgar Gould Cooperlane Farm Shelburne Falls, MA 01370 (413)625-6496 | David & Lois Larson Caora Con Kennel (Stud Svc. Only) Durham, NH 03824 (603)868-5313 | Gabrielle Merrill Misty Lane Border Collies RFD 1, Box 20 Brownfield, ME 04010 (207)935-2520 | Anne B. Priest Blue Island Farms RR 1 Lockeport, NS BOT ILO Canada (902)656-3161 | Fran Wheeler Willowgate HCR 72, Box 7405 N. Waterboro, ME 04061 (207)793-2679 |
| Stephanie Calder Singing Falls Farm RFD #4, Box 7810 Skowhegan, ME 04976 (207)474-2852 | Dayle & Joan Hamilton RFD 1 34 Brown Brook Rd. Southbury, CT 06488 (203)264-6348 | Richard & Barbara Leverett Longview Farm RD 2, Box 308 Burrell Rd. St. Johnsville, NY 13452 (508)568-2833 | Lynnette & Timothy Milleville Nutmeg Farm Sand Hill Rd. Portland, CT 06480 (203)342-4279 | Werner F. Reitboeck Nation Valley Farm Box 424 Winchester, Ontario K0C 2K0 Canada (613)448-3266 | Kristen P. Whittle Little Brook Farm 334 Russell Street Sunderland, MA 01375 (413)665-3802 |
| Carol & Larry Campion 99 Grayville Rd. Amston, CT 06231 (203)537-1386 | Vergil & Bonnie Holland The Training Center RD 1, Box 131 Hobart, NY 13788 (607)538-9160 | Betty Levin Old Winter Street Lincoln, MA 01773 (617)259-8799 | Sylvia C. Murray Fleece and Feathers Farm 294B Cossaduck Hill Rd. N. Stonington, CT 06359 (203)889-7777 | John Roche Alcove Rd., Rt. 111 Hannacroix, NY 12087 (518)966-4409 | Sarah & John Wieninger Wieninger's Star Rt. 106 Hunter, NY 12442 (518)263-4772 |
| Pat & Mike Canaday RD 2 Box 365 Meadowdale Road Altamont, NY 12009 (518)861-6049 | Walt & Eleanor Jagger Sheepy Hollow Farm Box 233 Hop Bottom, PA 18824 (717)289-4663 | Carolyn Mackey C&R Country Kennels New Smith Road, Box 101 Central Bridge, NY 12035 (518)868-9922 | Edith Overly Halstor Kennels 1011 Edmonds Road Framingham, MA 01701 (508)877-2294 | Gene & Lynne Sheninger Wayside Farm 213 Split Rock Road Boonton, NJ 07005 (201)299-9785 | Richard & Cheryl Jagger Williams C.J.'s Acres RR 1, Box 1374 Hop Bottom, PA 18824 (717)289-4733 |
| Gwen Cassel & John Viola O'Brac Border Collies 126A Fusch Road Columbus, NY 13460 (607)674-4541 | Janis Kubas Applegarth Border Collies P.O. Box 41 Hannastown, PA 15635 (412)836-2738 | Eve & Len Marschark Ivyrose Farm Farm School Rd. Box 397 Bedminster, PA 18910 (215)795-2023 | Lou Parsell Lou Par Border Collies 61 S. Morningside Drive Westport, CT 06880 (203)227-3545 | John Weikel Highland Farm RR 4, Box 266 Mt. Vernon, IN 47620 (812)783-2675 | Dee Woessner & Rick Weltzin 188 Flat Hill Road Lunenburg, MA 01462 (508)582-7682 |
| Lynn Deschambeault Merlynn Kennels RR 1, Box 897B Bridgton, ME 04009 (207)452-2898 | Sally M. Lacy Keswick Farm Gap Mountain Road PO Box 487 Fitzwilliam, NH 03447 (603)242-3017 | Alex McKinven Cessnock Farm RR 1, University Rd. North Hatley, Quebec J0B 2C0 Canada (819)842-2975 | Becky & Hoop Peterson Orchard Valley Farm 41 Bell Road Leyden, MA 01337 (413)624-5562 | Stephen Wetmore Spring Valley Farm Box 54 Strafford, VT 05072 (802)765-4466 | |
| Roger & Kathy Deschambeault Nearfield Farm HCR Box 16 Ctr. Conway, NH 03813 (603)939-2255 | Beverly Lambert Doug McDonough RFD #1, Box 2280 Brooks, ME 04921 (207)525-3223 | | | | |

NEBCA NEWS
213 Split Rock Road
Boonton, NJ 07005

FIRST CLASS MAIL
U.S. Postage Paid
Boonton, NJ 07005
PERMIT No. 202

F

EXP:12/31/92

Maria & Warren Mick
5750 Meadowdale Road
Box 371M, Rt. 2
Altamont, NY 12009