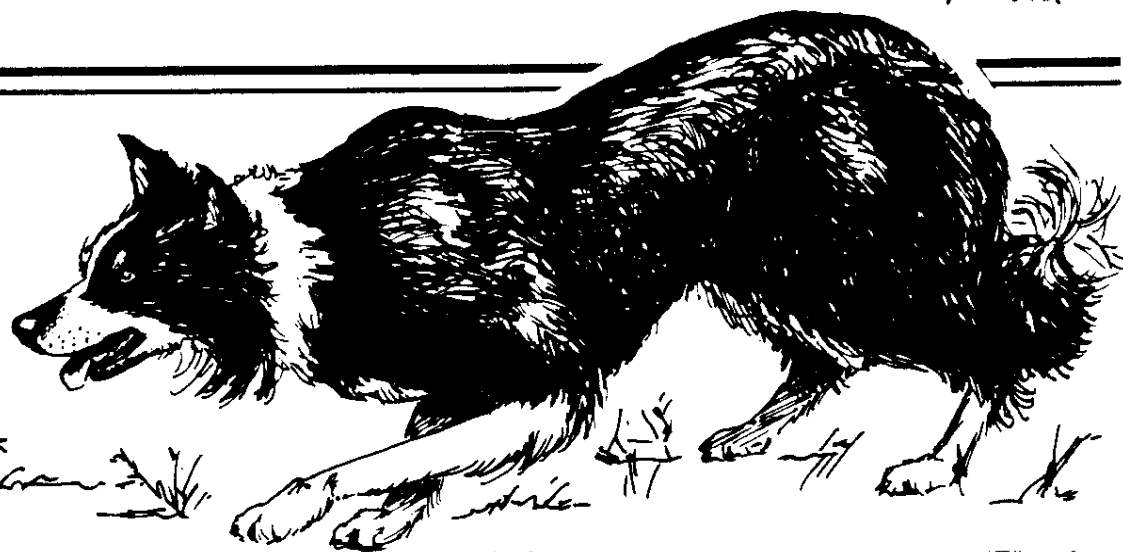


# NEBCA News



JULY/AUGUST 1992

AN OFFICIAL PUBLICATION OF THE NORTHEAST BORDER COLLIE ASSOCIATION

SUPPLEMENT

© 1990 NEBCA News, Boonton, NJ 07005

## TRIAL SUPPLEMENT

### Eastern Quebec Sheep Dog Trial June 13-14, 1992



*Trialers at the Northern-most Trial in North America*

by Bruce Smart

Fourteen handlers and twenty-eight dogs were entered in this new trial. The site, in the hills overlooking the St. Lawrence estuary, was remarkably beautiful. From the fetch gates to the post the course was level, but the open dogs had to climb a steep slope to pick up the sheep and they were also lost to view for a short time, which caused the usual problems for some. The large cross-bred ewes were particularly hard to

pen and those who succeeded placed well.

Our hosts, Paul Lagace and Helene Forbes, could not have been more graceful and welcoming. Language proved to be no barrier to communication, in fact some Americans are now well on the way to becoming bilingual. On Saturday night we were driven in a school bus into Matane for a seafood supper and, to judge from the laughter and singing on the way home, all of us had a very good time.

June 13, 1992

Novice/Novice - 7 Dogs Ran - 80 Pts.

1. Mark Bustard	Jed	57
2. Roland Lavoie	Travis	43
3. Paul Lagace	Plume	41
4. Betty McKeown	Fax	21

Pro/Novice - 7 Dogs Ran - 80 Pts.

1. Amanda Milliken	Rufus	66
2. Mark Bustard	Nick	55
3. Paul Lagace	Kid	42
4. David Dorrance	Cap	37

Open - 14 Dogs - 100 Pts.

1. Amanda Milliken	Hazel	90
2. Mike Canaday	Sandy	80
3. Amanda Milliken	Jac	76
4. Mike Canaday	Jill	75
5. David Young	Ben	74
6. Doug McDonough	Tweed	58
7. Bev Lambert	Lark	49
8. Bruce Smart	Skye	42
9. Evelyn Neuendorff	Lenard	41

June 14, 1992

Novice/Novice - 6 Dogs Ran - 80 Pts.

1. Mark Bustard	Jed	60
2. Betty McKeown	Fax	57
3. Warren Mick	Tara	52
4. Paul Lagace	Plume	50
5. Warren Mick	Winn	22

Pro/Novice - 7 Dogs Ran - 80 Pts.

1. Mark Bustard	Nick	58
2. Beverly Lambert	Robin	57
3. Amanda Milliken	Rufus	53
4. Evelyn Neuendorff	Bean	52
5. Bruce Smart	Moss	52

Open - 13 Dogs Ran - 100 Pts.

1. Amanda Milliken	Hazel	89
2. Beverly Lambert	Jet	87
3. Dave Young	Ben	85
4. Mike Canaday	Jill	82
5. Amanda Milliken	Jac	79
6. Mike Canaday	Sandy	69
7. Beverly Lambert	Mac	68
8. Doug McDonough	Tweed	64
9. Evelyn Neuendorff	Lenard	64
10. Bruce Smart	Skye	40

The Ranch Class was offered but there were no entries either day.

# EDITORS' NOTES

These are a short set of notes this issue, as we prepare for our annual trek to the Canada Triple Crown. This is as much a vacation for us as it is a chance to stack up 6 trials in a single week. We head, first, up to Stittsville, near Ottawa for the first leg and an entire weekend on the Neuen-dorff farm. Then we will go down into the Thousand Islands for some boating and swimming in the St. Laurence before heading out to the Buckley's for the second leg in the middle of the week. Then back to the St. Laurence for the final leg at Grass Creek Park. What a whirlwind trip.

Most important in our continuing discussions is the vote to change the By-Laws. I'm sure that you are tired of reading about it, but this issue is exactly why we are trying to change them. Currently, the By-Laws require a two-thirds majority of ALL members to enact a change. We are proposing that a change can be enacted at the Annual Meeting with a two-thirds majority of those in attendance. In this way, we can avoid the problems we are encountering with this vote -- we simply do not have enough votes to represent even one-half the membership. For the proposal or against it, we must have two-thirds of

the members voting in accordance with the old By-Laws.

Another issue was raised at the last meeting (Notes attached). It is apparent now that there are families where more than one member participates in NEBCA-sponsored events, yet they have only an individual membership. For both members of the family to qualify they must both be members of NEBCA or take out a Farm/Family membership. Please check your label for your status (indicated by an I for individual or F for Farm/Family). For those families with Individual Memberships, if you would like to continue with that same membership, please contact these Editors or the Secretary to identify which family member will

be assigned the NEBCA membership.

Gene & Lynne Sheninger

## Minutes of NEBCA Meeting Held at E. Durham, NY July 25, 1992

The meeting was called to order at 8:00 p.m. by President Steve Wetmore.

The Treasurers Report was submitted by Dee Woessner. She reported that the current balance is \$5450.36.

### Old Business:

It was decided at the last NEBCA Meeting to discontinue the NEBCA Futurity Trial. Any money paid into the futurity fund will be refunded. All requests for refunds should be directed to Dee Woessner.

### New Business:

The Fall Foliage Championship Trial will be held October 10 & 11, 1992; the tentative site is Strafford, VT. Steve Wetmore will be the trial manager, with Nathan Mooney judging.

By-Laws Vote: The Ballots are still not coming back. Members who have not voted on this important issue are requested to return their ballots as soon as possible.

NEBCA Ads in Trial Programs: Several requests for NEBCA ads have been received by Steve Wetmore, and he estimated that it would cost NEBCA about \$600 to place ads in all the trial programs. Vergil Holland suggested that each trial manager put in a complimentary ad for NEBCA in their trial programs.

NEBCA Individual/Farm Membership: Husband/wife teams are encouraged to review their membership status and, if they presently have Individual Membership, they may wish to consider changing to Farm Membership, entitling each to the benefits of NEBCA.

Dee Woessner motioned that there be a 6-month trial period for all members to borrow books from the Lending Library at no charge. The goal would be to extend more support to the non-trialing members to borrow books from the NEBCA Library. Members present at the meeting requested more frequent publication of the books and videos available through the

Lending Library. This was seconded by Gabe Merrill and the motion passed.

It was noted that money had been appropriated for the purchase of videos for the Lending Library. Due to the large number of requests for videos, Lin Reuther will purchase new videos with the available funds.

Dee Woessner also recommended that an eye testing clinic be held in conjunction with a trial. Dee has been authorized to write to the American Border Collie Association to request funding to help sponsor the eye clinic.

The next meeting will be held the evening of October 3, 1992 following Roger Deschambeault's NH State Championship Trial in E. Conway, NH.

The meeting was adjourned at 8:50 p.m.

Respectfully submitted,  
Kathy Deschambeault

**NEBCA News**  
213 Split Rock Road  
Boonton, NJ 07005

---

**EDITORS**  
Gene & Lynne Sheninger  
(201)299-9785

**NEBCA OFFICERS**  
**President:**  
Steve Wetmore (802)765-4466  
**Vice President:**  
Becky Peterson (413)624-5562  
**Secretary:**  
Lynn Deschambeault  
(207)452-2898  
**Treasurer:**  
Dee Woessner (508)582-7682  
188 Flat Hill Road  
Lunenburg, MA 01462  
**Trials Committee Chairperson:**  
Becky Peterson (413)624-5562  
Bell Rd. Box 395  
Leyden, MA 01337  
**Nursery Trials Committee Chairperson:**  
Eve Marschark (215)795-2023  
Farm School Rd.  
Bedminster, PA 18910

NEBCA News is published quarterly as the official publication of the Northeast Border Collie Association. Four issues are published: March 1, June 1, September 1 & December 1. Five supplements are issued during the trialing months. Subscription is by membership to NEBCA. Annual membership dues are \$10.00 per individual or \$15.00 per farm. To join, send your name, address and your dues to Lynn Deschambeault, RR 1 Box 897B, Bridgton, ME 04009. Make checks payable to NEBCA.

---

**DISPLAY ADVERTISING**  
Prices are for camera ready ads. Display Advertising will only appear in the 4 quarterly issues:

	Single Issues	1 year (4 issues)
Business Card (3" x 3 1/2")	\$15	\$50
1/4 Page	\$35	\$100
1/2 Page	\$50	\$150
Full Page	\$75	\$225

non-members add 20%  
If choosing the yearly price, ad may not change for the entire four issues without an additional fee.

# 215 Dogs Compete at Sheepy Hollow Joy's Pennsylvania State Championship June 19-21, 1992

by Walt Jagger

Border Collie handlers and their dogs gathered together from 14 states and 2 Canadian Provinces to compete at the Pennsylvania State Championship Trial at Sheepy Hollow Farm in Hop Bottom, PA for the 11th consecutive year. Lewis Pulfer of Quincy, Ohio ably judged.



*Is that a First Aid Kit Betty Levin is carrying?!*

Friday the younger dogs and handlers ran in four classes with a total of 92 dogs in competition running. The overcast sky was a God-send as the cooler day made all of the sheep more man-

ageable and consistent throughout the day, and a few sprinkles of rain seemed lost in the friendly, competitive atmosphere. Final results were as follows for Friday.

## USBCA Nursery Class - 14 Dogs - 90 Points

Vergil Holland ably judged the class.

1.	Ralph Pulfer	Ken	73
2.	Tom Wilson	Cap	71
3.	Florence Wilson	Chris	71
4.	Barbara Ligon	Cap	68
5.	Barbara Ligon	Mirk	57
6.	Beverly Lambert	Robin	55
7.	Stu Ligon	Wisk	54
8.	Stu Ligon	Chip	51
9.	Ralph Pulfer	Blade	46
10.	Lewis Pulfer	Cap	39

A dinner provided by the Jagger Family with pot luck help from the handlers fed about 145 people on Friday night.

Church of Brooklyn, PA. The Church provided their usual excellent chicken barbecue. A large tent provided shelter from any raindrops and bleachers provided seating for the large crowd of spectators.

Saturday dawned overcast and cool and with only a few sprinkles stayed that way all day which made for more consistent draws of sheep for the handlers. Joy Dog Food by Best Feeds of Oakdale, PA co-sponsored the trial with the Universalist

Many excellent runs were scattered throughout the day, and a score of 98 was necessary to be in the top ten. Final results are as follows:

## Novice/Novice - 35 Dogs - 75 Points

1.	Bonnie Holland	Kristie	70
2.	Anne Humbertson	Jesse	65
3.	David Horting	Mae	64
4.	Sally Lacy	Tru	63
5.	Warren Mick	Tara	60
6.	Mary Ann Fallon	Faith	59
7.	Nancy Ortiz	Vega	59
8.	Barbara Starkey	Jet	58
9.	Heather Murray	Nell	53
10.	Susanne Craddock	Poppy	52

## Pro/Novice - 26 Dogs - 75 Points

1.	Vergil Holland	Craig	64
2.	Beverly Lambert	Robin	62
3.	Denise Leonard	Nikki	61
4.	Ken Sigel	Mac	60
5.	Debbie Johnson	Ellie	58
6.	Bill Gregor	Quill	57
7.	Tim Milleville	Roy	56
8.	Betty Levin	Toy	52
9.	Evelyn Neuendorff	Bean	52
10.	Tim Milleville	Loch	48

## Ranch - 17 Dogs - 90 Points

1.	Tom Wilson	Keg	80
2.	Tom Wilson	Cap	72
3.	Hubert Bailey	Jose	69
4.	Sue Smith	Lass	68
5.	Barb Ligon	Cap	64
6.	Linda Tesdahl	Spinner	63
7.	Ralph Pulfer	Sybil	61
8.	Ken Sigel	Sally	59
9.	Steve Wetmore	Mirk	54
10.	Barbara Armata	Kelly	45

1.	Walt Jagger	Queen	105
2.	Eve Marschark	Spin	104
3.	Dick Williams	Kate	102
4.	Dick Williams	Jess	101
5.	Cheryl Jagger Williams	Fleet	101
6.	Cheryl Jagger Williams	Nell	101
7.	Becky Peterson	Fly	101
8.	Betty Levin	Kelty	100
9.	Tom Wilson	Roy	99
10.	Hubert Bailey	Rex	98

Best Shed: Nathan Mooney - Jill  
Best Drive: Becky Peterson - Fly  
Best Pen: Dave Shoemaker - Chance  
Best Gather: Betty Levin - Sweep

Sunday started with a church service for any who wished to attend under the big tent. A more beautiful setting for a worship service would be hard to imagine. Well attended and inspirational, it started the day on a cheerful note.

very strong with many good runs. The spectators were not as plentiful as Saturday because of the cold dreary weather but still was well represented.

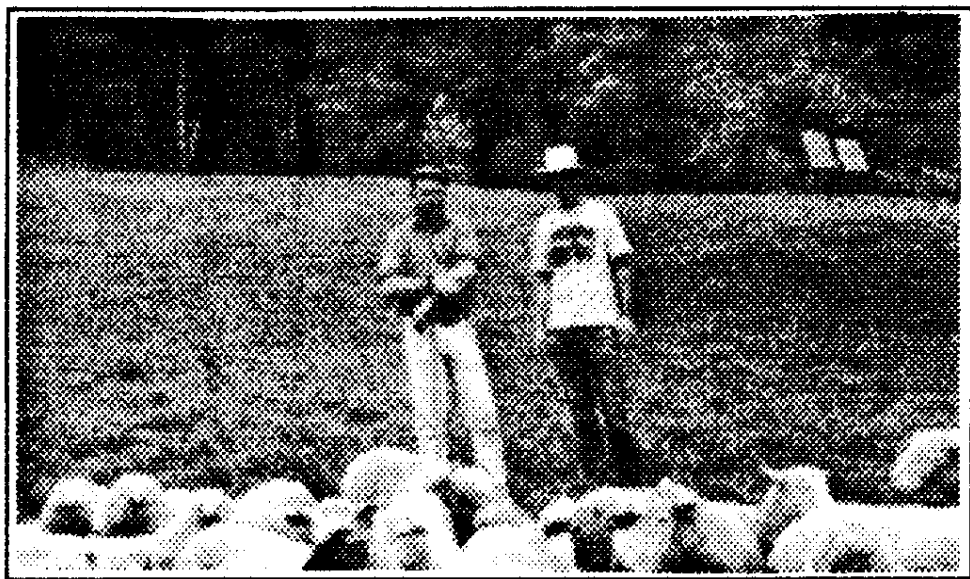
The weather Sunday continued to be dreary and cold with spurts of showers. A change in the sheep caused no particular problem. Gene Sheninger provided the sheep for Sunday, and they ran very well and consistently. Again competition was

The placings, again with 99 necessary to even be in the top ten, were as follows. A three-way tie for first place and a two-way tie for 7th and 8th were all run off to break the ties. Seventh and eighth place had identical scores throughout. Other ties could be resolved by outwork.

1.	Eve Marschark	Spin	102
2.	Mike Canaday	Jill	102

continued page 9

# Bill Berhow Clinic



Bill Berhow and Steve Wetmore at the Spring Valley Farm Clinic

by Dee Woessner

What a weekend! A friend used to say that the best experiences combined entertainment and education. The Bill Berhow Clinic, hosted by Steve Wetmore and Sarah Root at their Vermont farm on June 5-6, combined the two elements in perfect measure.

For at least a week after I attended the clinic, I kept telling my husband, "Bill says, when Abbie does ... I should ...." I was full of information, new ideas and the general excitement of seeing my dog work better than she had ever worked before. I took pages of notes and have read them over several times, each reading reminding me of some bit of advice I should incorporate into my daily work and training.

Since starting training my first Border Collie, Abbie (only too long ago), she had slowly improved. Once in a while the improvement has been gradual but, usually after months of trying to get a point across, she will change seemingly overnight, suddenly giving me a gentle lift or a nice square flank. Often I had no idea of what finally made the connection for her. At the clinic, she made another leap, in this case clearly due to Bill's directions to me on teaching her to drive. It was a real thrill seeing her do far more than I had known she could.

The clinic got off to a late start on Saturday because Bill arrived at 6 a.m. after an all-night drive from Virginia where he had left his champion dog Nick at a veterinary clinic due to a severe illness. (Last heard, Nick is much improved.)

Before he started working with the dogs, Bill talked about some of his philosophies of training. He thinks the dog/handler partnership has three steps. In the first, the dog has to get control of himself, without a great deal of external control imposed on him by the handler. (Bill doesn't advise using training aids like long lines or small pens and describes even a leash as a last resort.) In the next stage, the dog gives up control to the handler and learns to take commands. This can occur when the dog is emotionally ready, when he has had the proper early training, and when he trusts that the handler knows what he is doing. Finally, when training is advanced, the handler gives control back to the dog, so that they work as a team. Bill says that some successful handlers may never reach the third stage, but the very best teams share control. During his sessions with the dogs, he often pointed out to the handlers where they were in this progression and where they should be going.

Because several people dropped out just before the clinic, those attending the two

days got long sessions in the field, working at least three times. Some of the dogs (and handlers) showed tremendous improvement. He helped by telling the handler what to do and, more important, when to do it, and the change in the dogs was often amazing. My own dog, who had just started driving, was pushing her sheep across the field like a pro (something I hope to see again someday, when I get the timing just right).

After working with each dog, he made comments to the group on his recommendations for training. His advice included ignoring bad behavior, unless it was too severe, as much of it will go away on its own. He recommended letting dogs work out problems on their own when possible, and said that what a dog teaches itself will stay with it when the dog is under pressure. He also gave tips for improving scores on the trial field, including advice on turns at the post and shedding, and explained some fine points of judging.

One of Bill's comments startled many of us. He said that a handler's first dog is usually a happy worker, but with the second dog the handler may try for too much control and the dog is

less happy. He felt that a handler would more likely ruin their second dog than their first, a shock to all of us who thought our second dog was going to be perfect!

A handler, having heard that such coddling could spoil them, asked if trial dogs could live in the house. Bill replied that, of course, they could and many of his own dogs did. The handlers broke into spontaneous applause and cheers!

The sessions on Saturday continued until almost dark. Then handlers had a pot luck dinner and talked dogs until everyone was exhausted. Sunday we got off to an early start and continued all day, with a short lunch break. One of my dogs was the last one in the field Sunday evening, when it was so dark that if the sheep hadn't been white we couldn't have seen them.

Bill's respect for all the dogs was evident. His philosophy of trusting the dogs and letting them do some learning on their own rather than trying for rigid control felt right. And all he taught the clinic participants may have moved them a little nearer the goal of being dangerous handlers.

## Upcoming Clinics

*This listing is provided as a service to NEBCA members but in no way represents an endorsement of the trainers or sponsors of these events by NEBCA News or the Northeast Border Collie Association.*

**September 18:** Stockdog Clinic, Nation Valley Farm, Winchester, Ontario, Canada. Instructor Vergil Holland. Contact Werner Reitboeck, Nation Valley Farm, Box 424, Winchester, Ontario, KOC 2K0 (613)448-3266.

**September 19-20:** Stockdog Training Clinic with Cheryl Williams, Autumn Hill Farm, Mt. Airy, Md. Limit 20 dogs.

Pre-entry only. Spectators welcome. Contact Nancy Starkey at (301)253-4732.

**October 31-November 1:** Training Clinic, Central PA, near State College and Penn State University. Instructor Cheryl Jagger Williams. For more information call Bill or Joyce Gregor at (814)692-8279.

**November 21-22:** Stockdog Training Clinic with Vergil Holland, Autumn Hill Farm, Mt. Airy, MD. Limit 20 dogs. Pre-entry only. Spectators welcome. Contact Nancy Starkey at (301)253-4732.



# NEBCA Library

by Lin Reuther

Please don't forget your library! We have terrific training video tapes and books, as well as neat tapes to watch (the International Supreme Trials) and great stories to read.

Complete lending rules were printed in the Spring 1992 NEBCA News, but briefly each tape costs \$3.00 to borrow and you may keep tapes two weeks and books three weeks. But we're running a SPECIAL! Anyone who will write a review of a book or tape for NEBCA News can borrow free! So, you critical reviewers and members with sharp pencils - let us hear from you soon!

We have had a set of two training tapes returned to us: an independent study from the University of Guelph - Part 1 - "Selection and Early Training of Border Collies"; Part 2 - "Basic Training for Sheep Work". We'd love to have someone watch them and tell us all about them!

One of our most popular tapes is Glyn Jones' "Come Bye! And Away!" It's a 40 minute video which starts with a totally untrained dog going to sheep for the first time. Jones shows how he teaches his commands and gains the cooperation of the dog. The training sessions are filmed over the summer months in Wales (gorgeous scenery) and take the dog through driving, penning, and shedding. A great tape for both novice trainers and those further along. Anyone want to view it and give us their opinion?

All library requests go to:

Lin Reuther  
RR 1 Box 1147  
Pittsford, VT 05763

Also, we need suggestions of other videos or books the mem-

bers would like us to buy for the library. Please drop me a note, or tell Steve Wetmore, Becky Peterson, or Dee Woessner if you see them at a trial. The library is for all members so we need your input! Maybe books on tracking, search and rescue, sledding, etc. - let us know!

## New Video Tapes for the Library

We have recently received back three more video tapes for the Library. Two are the Tony Collins' video, "Training the Working Border Collie", and one is the third tape in the University of Guelph series, "Practical Shepherding, Part 3 - Advanced Training for Sheep Work".

Also, we plan to purchase the following new tapes:

Rural Route Videos (Martin Penfold) - "Training and Working A Border Collie" - Excellent - said to be the one video a novice should own.

Glyn Jones' next video for intermediate dogs, as soon as it comes out, hopefully this summer.

"Training and Working Dogs" by Lithgow, as soon as it comes out. Also will purchase right away his book by the same name, which goes into canine psychology, different stages of development, puppy socialization, etc.

Any book or tape purchase recommendations members have, please let me know. Any interest in Blue Riband of the Heather? Viv Billingham's One Woman and Her Dog? Any others? Let Lin know!

NEBCA BOOKS NOW  
BORROWED FREE!

At the NEBCA meeting held on July 25 after the Irish Inter-

national Trial in NY, it was voted to send library books to members FOR FREE on a 6-month trial basis. So you can now borrow any of our books for merely the cost of return postage (about \$1.50). Contact Lin Reuther, RR 1 Box 1147, Pittsford, VT 05763 to borrow a book. Videotapes, due to their popularity and greater cost, will continue to cost \$3.00 to borrow.

## NEBCA Library Holdings BOOKS

### Training the Sheep Dog

E. B. Carpenter - *The Border Collie: Basic Training for Sheepwork*

Tony Iley - *Sheepdogs at Work*

Glyn Jones - *A Way Of Life*  
Tim Longton - *The Sheep Dog: Its Work and Training*

Pope Robertson - *Anybody Can Do It*

Carroll Shaffner - *Training A Working Collie*

Mari Taggart - *Sheepdog Training: An All-Breed Approach*

John Templeton - *Working Sheep Dogs - Management and Training*

Luke Pasio - *Heather Jean: The Working Sheep Dog*

### General/Health

Janet Larson - *The Versatile Border Collie*

Marjorie Quarton - *All About the Working Border Collie*

Eddie Straiton - *Dog Ailments - Recognition and Treatment*

### Shepherd's Life

G. M. Anderson - *Times Remembered*

John Barrington - *Red Sky At Night*

Louis Irigaracy - *A Shepherd Watches, A Shepherd Sings*

Michael Mathers - *Sheepherders - Men Alone*

### Fiction/Children's

James Herriott - *Dog Stories*  
James Herriott - *Only One Woof*

Dick King-Smith - *Balse the Gallant Pig*

### Miscellaneous

Jane Burton - *A Dog's Life, A Year in the Life of a Dog Family (photos)*

Betty Cavanna - *The First Book of Wool*

Olivia Mills - *Practical Sheep Dairying*

### VIDEOS

1989 British International Supreme (Parts I and II)

1988 International Supreme (Parts I and II)

"Getting the Right Start" - R & R Graves (Parts I and II)

"Training the Working Stock Dog" - Elvin Kopp (Parts I and II)

"Come Bye! And Away! The Early Stages of Sheep Dog Training" - Glyn Jones

## Border Collie Rescue Services

Patty Allison (ME, VT,  
NH, MA, CT, NY)  
RR 1, Box 665  
Harrison, ME 04040  
(207)583-2353

Sharon Nunan (PA)  
3329 Foulk Road  
Boothwyn, PA 19061  
(215)497-4378

Nancy Cox Starkey (MD)  
12895 Colonial Drive  
Mt. Airy, MD 21771  
(301)253-4732

# Nursery Points As Of July 2, 1992

by Eve Marschark

The following is a current listing of Nursery dogs that have earned points during the 1992 season. The tallies include Sheepy Hollow, but do not list dogs who may have run this

year, but did not earn points. Please refer to the last publication of nursery points for their season-opening points.

We have 89 dogs earning points already, and it's only July! Way-to-go, trialers!

Deb Anderson	Ben	R-1	
Barb Armata	Kelly	R-4	
Bernie Armata	Chris	P-11	
Hubert Bailey	Jose	R-3	
Brian Bennett	Maid	N-9	
Lois Burke	Meg	N-2	
Carol Campion	Dave	P-8	
Larry Campion	Ky	R-11	
Larry Campion	Nip	R-5	
Mike Canaday	Fly	P-8	
Ron Cody	Kerry	N-6	
Ethel Conrad	Gael	R-2	
Suzanne Craddock	Poppy	N-3	
Michael Dathe	Dodge	N-5	
Lynn Deschambeault	Jesse	P-9	
Roger Deschambeault	Sue II	R-12	
Kathy Deschambeault	Tyson	R-5	
Maryann Fallon	Faith	N-3	
Maryann Fallon	Lad	N-2	
Ed Gebauer	Jake	N-3	
Karen Greenlees	Major	P-20	R-0
Bill Gregor	Quill	P-8	
K. Hall	Jack	N-3	
Dayle Hamilton	Piper	P-1	
Vergil Holland	Craig	P-7	
Bonnie Holland	Chad	P-7	
Bonnie Holland	Megan	N-3	
Bonnie Holland	Christie	N-5	
David Horting	Mae	N-4	
Alison Huff	Lynn	P-3	
Ann Humbertson	Jesse	N-4	
Walt Jagger	Jen	R-21	OPEN
Walt Jagger	Roy	P-7	
Debbie Johnson	Ellie	P-3	
Dennis Jones	Emma	N-1	
Jean Kennedy	Sue	P-11	
Deb Kindig	Tam	P-11	
Joe Kennedy	Hank	N-5	
Joann Krause	Meg	N-7	
Gwen Kuykendall	Paige	P-7	
Kent Kuykendall	Gail	P-3	
Sally Lacey	Tru	P-2	
Denise Leonard	Nikki	P-17	
Betty Levin	Sweep	R-2	
Betty Levin	Toy	P-4	
Bev Lambert	Robin	P-17	
Barb Ligon	Cap	R-3	
Betty McKeown	Fax	N-9	
Chalmers Means	Pip	P-12	
Deb Merrill	Brie	N-4	
Rita Michelenko	Leer	N-1	
Warren Mick	Tara	N-7	

Amy Miller	Lindy	N-7
Tim Milleville	Loch	P-2
Tim Milleville	Roy	P-8
Tim Milleville	Peg	N-5
Heather Murray	Nell	N-9
Sylvia Murray	Duke	P-12
Evelyn Neuendorff	Bean	P-3
Nancy Ortiz	Vega	N-3
Edith Overly	Skye	P-12
Jill Parker	Shadow	P-6
Jill Parker	Fly	P-1
Anne Priest	Nell	N-11
Ralph Pulfer	Sybil	R-2
Bea Quirk	Jay	P-2
Paul Quirk	Bob	N-6
Ellen Raja	Jenny	P-2
Jackie Rohrig	Pip	N-1
Rich Seaman	Socks	N-11
David Shoemaker	Spy	P-2
Ken Sigel	Sally	R-18
Ken Sigel	Ben	R-9
Ken Sigel	Mac	P-11
Sue Smith	Lass	R-11
Mark Soper	Rose	N-2
Barb Starkey	Jet	N-3
Linda Tesdahl	Spinner	R-2
Bob Thrasher	Cash	P-17
Wendy Warner	Abby	N-8
Steve Wetmore	Nell	P-9
Steve Wetmore	Nan	P-19
Steve Wetmore	Mirk	R-9
Tom Wilson	Cap	R-3
Tom Wilson	Keg	R-4
Dee Woessner	Abby	N-15
Dee Woessner	Beth	N-1
Thad Woodward	Willy	N-1
Mary Ellen Young	Nan	N-2

## Eye Clinic Saturday, September 26, 3:00-5:00 p.m. Bucks County Horse Park, Revere, PA

Dr. Lionel F. Rubin  
Board Certified Veterinary Ophthalmologist  
University of Pennsylvania

\$15.00/Dog - Checks Payable to Dr. Rubin

PRE-REGISTRATION REQUIRED  
50 Dog Minimum or Clinic Will Be Cancelled One Week Before

Testing Will Be Performed After Dogs Have Run  
Because Drops Will Be Administered To Dilate Pupils  
Standard Eye Exam Form For CEA, PRA, etc.  
CERF Form Costs \$2.00/Form & \$7.50 for CERF Registration  
(Standard Eye Exam Form Normally Sufficient)

Tattoo Service Also Available  
\$35.00/Person Registration Fee Plus \$10.00/First Dog,  
\$8.00 Each Additional Dog

For More Information Contact Eve Marschark  
Box 397 Farm School Rd., Bedminster, PA (215)795-2023

# Upcoming Trial Dates

*The Trials Committee has approved the following open trials as qualifying for NEBCA points. Nursery Trials are NEBCA qualified as long as the Nursery Trial Guidelines are followed and the Trial Manager is a NEBCA member.*

**\* NEBCA Qualifying Open Trial # New Trial**

**\*\* July 11-12:** Greenlees Farm Sheep Dog Trial, Joyceville, Ontario. Two 1-day Nursery and Open Trials. Contact Karen Greenlees, RR 1, Joyceville, Ontario KOH 1YO Canada (613)542-1645.

**July 12:** Misty Lane Nursery Trial, Brownfield, ME. Contact Gabrielle Merrill, RFD 1, Box 20, Brownfield, ME 04010 (207)935-2520.

**\*\* # July 18-19:** Sheep Focus Sheep Dog Trial, Erin, Ontario. Contact Stu Hicks (416)562-4962.

**\*\* July 25-26:** Irish-American Championship Sheep Dog Trial, Irish Cultural & Sports Center, East Durham, NY. Two one-day open trials. Contact Donald Gallagher, Rt. 145, East Durham, NY 12423 (518)634-2392.

**\*\* August 1-2:** Bangor Fair Open Trial, Bangor Civic Center, Bangor, Maine. Contact Roger Deschambeault, Nearfield Farm, HCR 16, Ctr. Conway, NH 03813 (603)939-2255 or Beverly Lambert (207)525-3223..

**\*\* July 31, August 1-2:** Ottawa Valley Sheep Dog Trial, Stittsville, Ontario. Nursery on Friday and Saturday; Open on Saturday and Sunday. Entry deadline July 18. Contact Evelyn Neuendorff, Box 468, Munster, Ontario, Canada KOA 3PO (613)838-2315.

**\*\* August 4-6:** Hastings County Sheep Dog Trials, Roslin, Ontario. One Nursery and two one-day Open Trials, USBCHA Nursery, cattle. Contact Pat Buckley,

RR 1, Roslin, Ontario, Canada KOK 2YO (613)396-6600.

**\*\* August 7-9:** Pittsburgh Township Sheep Dog Trials, Grass Creek Park, Kingston, Ontario. One Nursery and two one-day Open Trials, USBCHA Nursery. Contact Amanda Milliken, RR 2, Kingston, Ontario, Canada K7L 5H6 (613)546-1451 or (613)531-9405.

**\* # August 8:** Central New York Sheep Dog Championship Trial, Syracuse, NY. One day Open and Nursery Trial. Contact Ben Larrow, c/o Burnet Park Zoo, 500 Burnet Park Drive, Syracuse, NY 13204 (315)435-8511.

**\* August 15:** Maine State Championship, Brooks, ME. Open and Nursery Trial, USBCHA Nursery. Contact Beverly Lambert, RFD 1, Box 2280, Dickey Hill Rd., Brooks, ME 04921 (207)525-3223.

**\* August 16:** Skowhegan Fair Sheep Dog Trial, Skowhegan, Maine. Contact Charles Carpenter, 61 Water Street, Skowhegan, ME (207)474-2947.

**\* August 21-22:** Empire State Open Sheep Dog Trial, Altamont, NY. Nursery, USBCHA Nursery, Open. Contact Mike Canaday, RD 2, Box 365, Meadowdale Road, Altamont, NY 12009 (518)861-6049.

**\* August 23:** New York State Championship, Altamont Fair, Altamont, NY. Contact Mike Canaday, RD 2, Box 365 Meadowdale Road, Altamont, NY 12009 (518)861-6049.

**\* August 22:** Scottish Festival Open Trial, Quechee, VT. Contact George Madeira, 79 Hanover St. #8, Lebanon, NH 03766 (603)448-5669.

**August 29-30:** Spring Valley Nursery Trial, Strafford, VT. Two one-day Nursery Trials. Contact Steve Wetmore, P.O. Box 54, Strafford, VT 05072 (802)765-4466.

**\* September 4:** Lancaster Fair Open Sheep dog Trial, Lancaster, NH. Contact Roger Deschambeault, HCR 16, Ctr. Conway, NH 03813 (603)939-2255.

**\* # September 5:** Blue Hill Fair Open Sheep Dog Trial, Blue Hill Fair, Blue Hill, ME. Open Trial. Contact Jim Davidson, North Country Farm, Round Pond, ME 04564 (207)677-2224.

**\* September 6:** North East US Open Sheep Dog Trial, Blue Hill, Maine. Contact Jim Davidson, North Country Farm, Round Pond, ME 04564 (207)677-2224.

**\*\* September 5-7:** New Jersey State Sheep Dog Trial at Fosterfields, Morristown, NJ. Nursery on Saturday and Sunday; Open on Sunday and Monday; USBCHA on Monday. Contact Gene Sheninger, 213 Split Rock Road, Boonton, NJ 07005 (201)299-9785.

**\* September 7:** Windsor Fair Open Sheep Dog Trial, Windsor, Maine. Contact Fred Eames, RFD 2, Box 5130, Waterville, ME 04901 (207)872-9604.

**\*\* September 12-13:** Hagersville Sheep Dog Trials, Hagersville, Ontario. Two 1-day Open and Nursery Trials. Contact Alice Guthrie, RR 4, Hagersville, Ontario NOA 1HO Canada (416)768-5587.

**\* September 12:** Allegheny Plateau Sheep and Wool Festival Dog Trial, Morris, NY. Open Trial. Contact Gwen Cassel, 126A Fusch Road, Columbus, NY 13460 (607)674-4541.

**\* September 13:** O'Brave Farm Sheep Dog Trial, Columbus, NY. Nursery and Open Trial. Contact Gwen Cassel, 126A Fusch Road, Columbus, NY 13460, (607)674-4541.

**\*\* # September 19-20:** Nation Valley Sheep Dog Trial, Nation Valley Farm, Winchester, Ontario. Two one-day Nursery and Open Trials. Contact Werner Reitboeck,

Nation Valley Farm, Box 424, Winchester, Ontario, Canada KOC 2KO (613)448-3266.

**\*\* September 26-27:** Keystone State Sheep Dog Trial, Bucks County Horse Park, Revere, PA. Nursery and Open Trials. Contact Eve Marschark, Box 397 Farm School Road, Bedminster, PA 18910 (215)795-2023.

**\* October 3:** New Hampshire State Championship, East Conway, NH. Open Trial. Contact Roger Deschambeault, HCR 16, Ctr. Conway, NH 03813 (603)939-2255.

**\* October 4:** Fryeburg Fair Open Sheep Dog Trial, Fryeburg, Maine. Contact Gabe Merrill, RFD #1 Box 20, Brownfield, ME 04010 (207)935-2520.

**October 10-11:** Fall Foliage Championship Trial, Strafford, VT. Contact Steve Wetmore, P. O. Box 54, Strafford, VT 05072 (802)765-4466.

**1993 Trials:**

**\*\* # October 17-18:** African Lion Safari Trial, near Guelph, Ontario. Two 1-day Open and Nursery Trials. Contact Amanda Milliken, RR 2, Kingston, Ontario K7L 5H6 (613)546-1451.

**\*\* October 31-November 1 (or September 26-27):** Ontario Border Collie Club Fall Trial, Kingston, Ontario. Two 1-day Open & Nursery Trials. Contact Amanda Milliken, RR 2, Kingston, Ontario K7L 5H6 Canada (613)546-1451 or (613)531-9405.

**\*\* October 23-25:** Cumberland Valley Open Trial, Carlisle, PA. Two one-day Open Trials; Open Ranch also. Contact Nathan Mooney, 245 Alters Road, Carlisle, PA 17013 (717)249-5695.

**November 7-8:** Maplewood Nursery Trial, Colchester, CT. Contact Carol Campion, 99 Grayville Rd., Amston, CT 06231 (203)537-1386.

Use this membership form for new members or a renewal. Renewals are due on January 1, 1992 for current members. Be sure to send it to Lynn Deschambeault. Any NEW member who joined after July 1, 1991 need not renew until January 1, 1993. The 1992 Breeders List Deadline was January 31, 1992 \*

## Northeast Border Collie Association Membership Application

NAME

DATE

ADDRESS

CITY/STATE

ZIP CODE

PHONE

### BREEDERS LISTING:

(maximum five lines)

Mail to:

Lynn Deschambeault  
RR 1, Box 897B  
Bridgton, ME 04009

Annual Membership -- Individual \$10.00

Family or Farm -- \$15.00

Annual Breeders Directory -- \$10.00

Make checks payable to NEBCA

TOTAL

☐

Please check box if you do not want your name released to others for mailing list purposes.

\* Subscription to the Breeders Directory runs for the entire year. It entitles the Breeder to be listed in every issue of the NEBCA News, the NEBCA Calendar for the upcoming year, and all NEBCA promotional literature.

## CLASSIFIED:

Classified ads cost \$3.00 per issue or \$10.00 per year (four issues and all supplements - no changes) for 50 words or less. \$.20 per word will be charged for longer ads. Sorry, we can no longer accept ads by telephone. Checks or money order must accompany ad.

**CUSTOM BORDER COLLIE TRAINING SERVICES AVAILABLE:** private lessons, clinics and exhibitions. Pups through started dogs available. Cheryl Jagger Williams, RR 1, Box 1374, Hop Bottom, PA 18824 (717)289-4733.

**MERLYNN KENNELS** Border Collies and Kathadin Hair Sheep. Merle and black and white puppies and occasionally started dogs, all breeding stock OFA certified and eye checked. Proven producers of

trial and obedience winners. Kathadin Hair Sheep originated in Maine, excellent for working dogs, no shearing or tail docking necessary. Lynn Deschambeault, Merlynn Kennels, RR 1, Box 897B, Bridgton, ME 04009 (207)452-2898.

**GLASS PLUS:** Featuring custom made stained glass Border collies; single Border Collies, Border Collie and sheep heads, plaques, suncatchers, etc. A large variety of sheep items as well as other breed dogs available. For information call or write Ellen Squier, 198 Rose Hill Rd., Portland, CT 06480 (203)342-4081.

**BORDER CORNER,** Border Collie specialty shop featuring training books, videos and

gifts. Kathy Kemper, 212 Salem Drive, Everman, TX 76140 (817)568-2515.

**BORDER COLLIE TRAINING SERVICES** for dog & handler. Puppies thru started & trained dogs. Eve Marschark, Ivyrose Farm, Box 397, Bedminster, PA 18910 (215)795-2023.

**THE DOG HOUSE,** whistles, lanyards, training books, imported crooks, training videos. Francis Raley, Rt. 1, Box 14A, Crawford TX 76638, (817)486-2500.

**NATIONAL DOG REGISTRY** licensed tattooing is being offered by Applegarth Border Collies. A \$35.00 lifetime registration fee plus a \$10.00 tat-

tooing fee per dog covers all dogs you'll ever own. Quick, painless, takes 2-3 minutes. Very easy to add dogs and transfer ownership also. Give your dog a way home and give yourself peace of mind. Contact Jan Kubas (412)836-2738 evenings.

**TRAINED FEMALE** - 5 yrs. old (W. Jagger's Vic & Floss/Moss bitch) - placed in Open but can run Ranch. A natural driving dog. Plenty of power and devotion. Hips OFA good; eyes certified clear PRA & CEA. Great mother. FMI contact Eve Marschark before 9 pm, (215)795-2023.

continued page 9



## Total Points Accumulated Through 7/25/92

Points can come from no more than four trials per state and only twelve trials per year. Points are accumulated based upon placing in the top ten and the number of dogs you beat in competition. Only NEBCA MEMBERS can accumulate official points in this standing.

Walt Jagger	Queen	326
Cheryl Jagger Williams	Kim	257
Mike Canaday	Jill	241
Amanda Milliken	Hazel	226
Cheryl Jagger Williams	Nell	222
Walt Jagger	Celt	203
Eve Marschark	Spin	191
Dick Williams	Jess	185
Mike Canaday	Patti	175
Beverly Lambert	Jet	148
Dick Williams	Kate	145
Amanda Milliken	Boy	112
Pat Buckley	Bart	104
Beverly Lambert	Lark	103
Carol Campion	Lady	99
Cheryl Jagger Williams	Fleet	99
Amanda Milliken	Jack	98
Lynn Deschambeault	Dandy	78
David Young	Ben	74
Becky Peterson	Roy	71
Mike Canaday	Sandy	70
Eve Marschark	Don	67
Betty Levin	Kelty	66
Becky Peterson	Queen	58
Becky Peterson	Fly	55
Gene Sheninger	Robin	55
John Roche	Kep	53
Gene Sheninger	Meg	50
Vergil Holland	Meg	46
Duff George	Jim	45
Beverly Lambert	Mac	45
Bruce Smart	Skye	44
Lisa Schafer	Spook	43
Roger Deschambeault	Jill	42
Edgar Gould	Meg	37
Walt Jagger	Kit	33
Roger Deschambeault	Glen	31
Lynn Deschambeault	Jolly	26
Evelyn Neuendorff	Lenard	26
Roger Deschambeault	Tyson	24
John Roche	Tibby	23
Pat Buckley	Dice	22
J. P. Lalonde	Madi	19
Dayle Hamilton	Heidi	18
Dayle Hamilton	Spot	14
Steve Wetmore	Floss	13
Doug McDonough	Tweed	13
Gabe Merrill	Meg	12
Steve Wetmore	Ben	12
Larry Campion	Nip	11
Lynnette Milleville	Fly	10

## PA State Championship

*continued*

3.	Carol Campion	Lady	102
4.	Walt Jagger	Celt	101
5.	Cheryl Jagger Williams	Kim	101
6.	Stu Ligon	Tynne	100
7.	Dick Williams	Jess	100
8.	John Roche	Kep	100
9.	Nathan Mooney	Max	99
10.	Mike Canaday	Sandy	99

Best Gather: Walt Jagger - Celt

Best Drive: Cheryl Jagger Williams - Nell

Best Shed: Hubert Bailey - Rex

Best Pen: Stu Ligon - Tynne

Overall Combined Score Champion: Eve Marschark - Spin - 206

Reserve Champion: Dick Williams - Jess - 201

Sixty awards from Joy were presented. Twenty-five trophies were given plus well over \$4000 in cash awards were distributed. A real fun trial!

## Classified *continued*

**STARTED FEMALE** - 1 yr. old (E. Marschark's Spin and D. Kindig's Ringo). Biddable, keen, well-socialized. Hips preliminarily x-rayed and look great. Eyes certified clear of CEA. Probably the one I should be keeping. FMI contact Eve Marschark before 9 pm, (215)795-2023.

## BORDER COLLIE PUPS

born 7/1/92 out of Jamison Farm's Kate (Shearer's Jim x Bauserman's Jay) sired by Applegarth's Kastle (Marschark's Rin x Foor's Lad). Bred to work stock and/or obedience, very keen but biddable. B/W, two males available. Applegarth Border Collies. Jan Kubas (412)836-2738 eves.



### THE WORKING BORDER COLLIE MAGAZINE

14933 Kirkwood Road, Dept NJ  
Sidney, Ohio 45365  
(513)492-2215

Training Articles \* Veterinary Column  
Livestock Guard Dog Articles \* Feature Articles  
Trial & Clinic Dates \* Breeder's Directory

*Today's Magazine For The Working Border Collie*

US Funds Only

\$25.00 / year - US  
\$35.00 / year - Canada

# BREEDERS DIRECTORY

*This listing of breeders of Border Collies is for informational purposes only and in no way represents an endorsement of these breeders by the Northeast Border Collie Association. Responsible Breeders would be very happy to provide references to anyone intending to use their services. Only Breeders who subscribed before the deadline of January 31, 1992 are listed. Minor changes to addresses during the year will be accommodated, but there will be no additions.*

<b>Karla Bock &amp; Bob Basile</b> Hoof & Paw Farm RFD 1, Box 85 New Sharon, ME 04955 (207)778-3903	<b>Edgar Gould</b> Cooperlane Farm Shelburne Falls, MA 01370 (413)625-6496	<b>David &amp; Lois Larson</b> Caora Con Kennel (Stud Svc. Only) Durham, NH 03824 (603)868-5313	<b>Gabrielle Merrill</b> Misty Lane Border Collies RFD 1, Box 20 Brownfield, ME 04010 (207)935-2520	<b>Anne B. Priest</b> Blue Island Farms RR 1 Lockeport, NS BOT 1LO Canada (902)656-3161	<b>Fran Wheeler</b> Willowgate HCR 72, Box 7405 N. Waterboro, ME 04061 (207)793-2679
<b>Stephanie Calder</b> Singing Falls Farm RFD #4, Box 7810 Skowhegan, ME 04976 (207)474-2852	<b>Dayle &amp; Joan Hamilton</b> RFD 1 34 Brown Brook Rd. Southbury, CT 06488 (203)625-6496	<b>Richard &amp; Barbara Leverett</b> Longview Farm RD 2, Box 308 Burrell Rd. St. Johnsville, NY 13452 (508)568-2833	<b>Lynnette &amp; Timothy Milleville</b> Nutmeg Farm Sand Hill Rd. Portland, CT 06480 (203)342-4279	<b>Werner F. Reithoeck</b> Nation Valley Farm Box 424 Winchester, Ontario K0C 2K0 Canada (613)448-3266	<b>Kristen P. Whittle</b> Little Brook Farm 334 Russell Street Sunderland, MA 01375 (413)665-3802
<b>Carol &amp; Larry Campion</b> 99 Grayville Rd. Amston, CT 06231 (203)537-1386	<b>Vergil &amp; Bonnie Holland</b> The Training Center RD 1, Box 131 Hobart, NY 13788 (607)538-9160	<b>Betty Levin</b> Old Winter Street Lincoln, MA 01773 (617)259-8799	<b>Sylvia C. Murray</b> Fleece and Feathers Farm 294B Cossaduck Hill Rd. N. Stonington, CT 06359 (203)889-7777	<b>John Roche</b> Alcove Rd., Rt. 111 Hannacroix, NY 12087 (518)966-4409	<b>Sarah &amp; John Wieninger</b> Wieninger's Star Rt. 106 Hunter, NY 12442 (518)263-4772
<b>Pat &amp; Mike Canaday</b> RD 2 Box 365 Meadowdale Road Altamont, NY 12009 (518)861-6049	<b>Walt &amp; Eleanor Jagger</b> Sheepy Hollow Farm Box 233 Hop Bottom, PA 18824 (717)289-4663	<b>Carolyn Mackey</b> C&R Country Kennels New Smith Road, Box 101 Central Bridge, NY 12035 (518)868-9922	<b>Edith Overly</b> Halstor Kennels 1011 Edmonds Road Framingham, MA 01701 (508)877-2294	<b>Gene &amp; Lynne Sheninger</b> Wayside Farm 213 Split Rock Road Boonton, NJ 07005 (201)299-9785	<b>Richard &amp; Cheryl Jagger Williams</b> C.J.'s Acres RR 1, Box 1374 Hop Bottom, PA 18824 (717)289-4733
<b>Gwen Cassel &amp; John Viola</b> O'Brac Border Collies 126A Fusch Road Columbus, NY 13460 (607)674-4541	<b>Janis Kubas</b> Applegarth Border Collies P.O. Box 41 Hannastown, PA 15635 (412)836-2738	<b>Eve &amp; Len Marschark</b> Ivyrose Farm Farm School Rd. Box 397 Bedminster, PA 18910 (215)795-2023	<b>Lou Parsell</b> Lou Par Border Collies 61 S. Morningside Drive Westport, CT 06880 (203)227-3545	<b>John Welkel</b> Highland Farm RR 4, Box 266 Mt. Vernon, IN 47620 (812)783-2675	<b>Dee Woessner &amp; Rick Weltzin</b> 188 Flat Hill Road Lunenburg, MA 01462 (508)582-7682
<b>Lynn Deschambeault</b> Merlynn Kennels RR 1, Box 897B Bridgton, ME 04009 (207)452-2898	<b>Sally M. Lacy</b> Keswick Farm Gap Mountain Road PO Box 487 Fitzwilliam, NH 03447 (603)242-3017	<b>Alex McKinven</b> Cessnock Farm RR 1, University Rd. North Hatley, Quebec J0B 2C0 Canada (819)842-2975	<b>Becky &amp; Hoop Peterson</b> Orchard Valley Farm 41 Bell Road Leyden, MA 01337 (413)624-5562	<b>Stephen Wetmore</b> Spring Valley Farm Box 54 Strafford, VT 05072 (802)765-4466	
<b>Roger &amp; Kathy Deschambeault</b> Nearfield Farm HCR Box 16 Ctr. Conway, NH 03813 (603)939-2255	<b>Beverly Lambert</b> Doug McDonough RFD #1, Box 2280 Brooks, ME 04921 (207)525-3223				

**NEBCA NEWS**  
213 Split Rock Road  
Boonton, NJ 07005

**FIRST CLASS MAIL**  
U.S. Postage Paid  
Boonton, NJ 07005  
PERMIT No. 202

F

EXP:12/31/92

Maria & Warren Mick  
5750 Meadowdale Road  
Box 371M, Rt. 2  
Altamont, NY 12009

