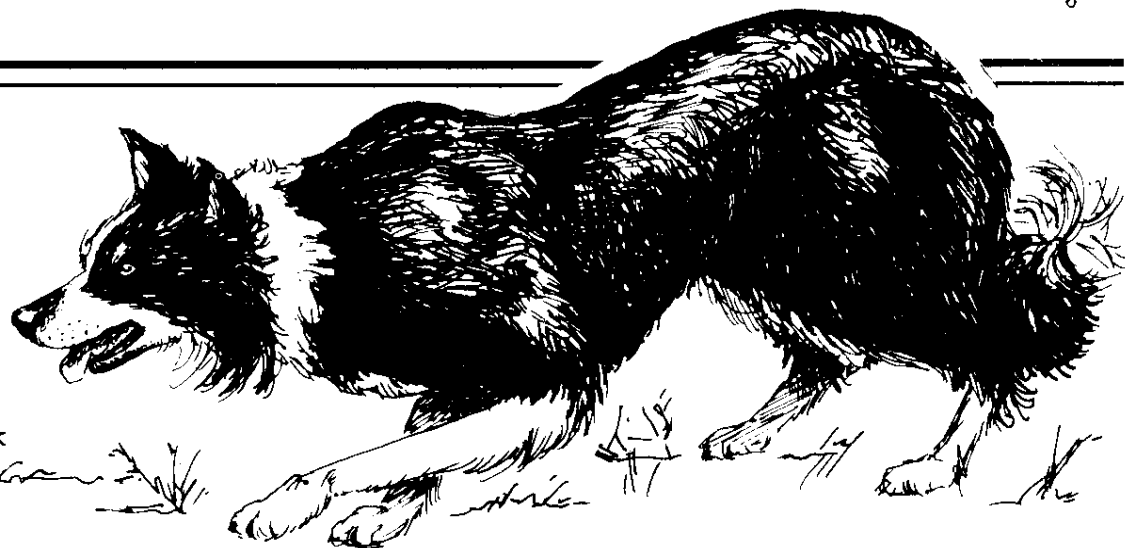


NEBCA News



FALL 1990

AN OFFICIAL PUBLICATION OF THE NORTHEAST BORDER COLLIE ASSOCIATION

VOLUME 8 • NUMBER 3

© 1990 NEBCA News, Boonton, NJ 07005

THE 1990 SEASON -- IN THE HOME STRETCH

MINUTES OF NEBCA MEETING HELD ON SEPTEMBER 2, 1990

Called to order by President Steve Wetmore. Details concerning the Fall Foliage Trial were the business at hand. This year's trial will have to be funded entirely by NEBCA as no outside sponsors were found. It was agreed to try to keep the trial budget as low as possible. It was voted to not have prizes for all the qualified dogs this year. There will be prizes for the top ten dogs in the Fall Foliage Trial as well as the high points competition. It was voted (and passed) that NEBCA provide not more than \$400.00 to pay for a judge for the Fall Foliage Trial.

BOOT - PART 5 (April & May)

Note: Once again we find ourselves a bit behind in printing Beverly's progress with Boot. We will try to continue through the rest of the Fall Supplements to catch up. ed's.

By early April, Boot was again wearing the sheep with good control and making lovely, long outruns with enthusiasm. She is still not maintaining sufficient contact with the sheep on the fetch. If the sheep seem to be going the right way, she has a tendency to hang too far back and only come on when called. I am

The trial will be held on October 6 and 7 at the Canaday's Farm in Altamont, New York.

Steve Wetmore said he would try to get Paul Heidenberg to help provide information on what caterers in the area would charge for a dinner on Saturday night, October 6th.

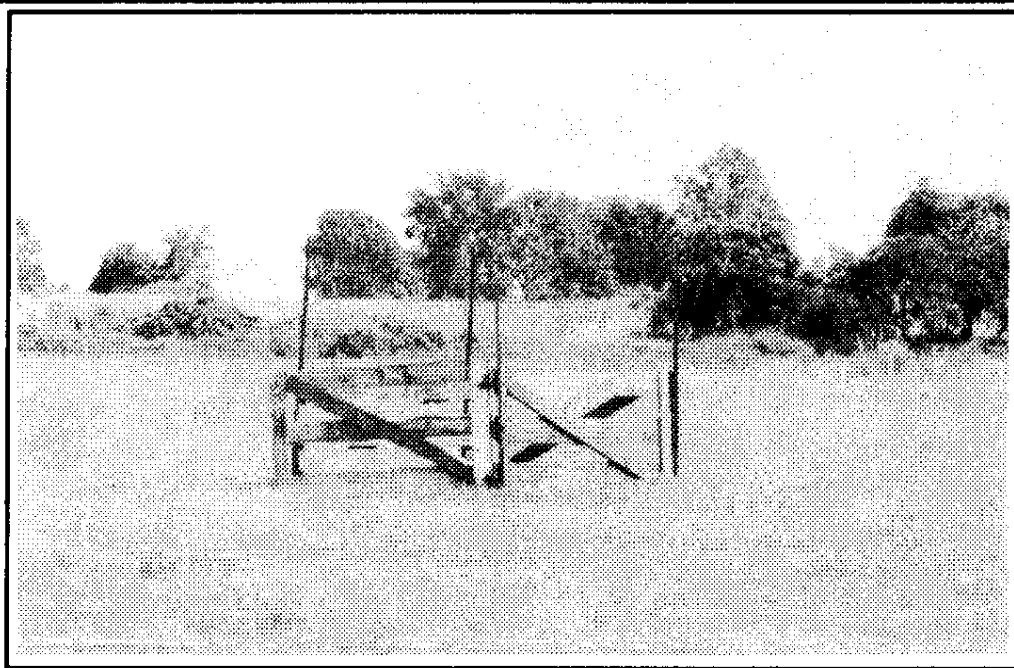
All NEBCA members are invited to help make this Championship Trial a success. Anyone interested in helping out should contact Steve Wetmore, Becky Peterson, or Mike Canaday.

The next NEBCA meeting will be after the Nearfield Farm Trial in Center Conway, NH on September 29th.

working on this by walking away from the flock while she is fetching them. She is learning that she has to stay up to the sheep because I may not be where she thought I was.

The biggest training hurdle we are now trying to surmount, however, is learning the flank commands. Boot will move around the sheep just fine, but she is completely oblivious to anything I am saying. If I move far enough out of balance, she will move to compensate but she has no interest in moving just because I ask her to. This is the next

continued page 2



The frustration of Waupoos Island !!

EDITOR'S NOTES

Well, our trial is over, so we can breathe a little easier and get to work on this issue of the newsletter. Sorry it took so long, but we had to concentrate our efforts on our trial.

This issue contains trial results through August, but the total NEBCA points have been tallied right up through the Hagersville trial in Canada on September 8 & 9 (September results will be printed next month). There are only two more trials until the Championship, so we are pretty close. If you want to count down the top eighteen dogs you can get a good idea of who will be competing in the Fall Foliage Championship on October 6 & 7. Remember that a handler can only enter two dogs.

On the Fall Foliage Championship, we are still in need of volunteers. COME ON OUT AND HELP!! We need sheep people, announcers, score keepers, time keepers, AND don't forget the donations for prizes and advertisements in the program. Call us or Mike Canaday, or Beverly Lambert, or Becky Peterson, or Steve Wetmore. WE NEED YOUR HELP.

continued page 2

FALL FOLIAGE DINNER

On Saturday, October 6, we will have a lamb barbecue for all handlers, family and guests. Tickets are \$6.00 per person to cover the lamb, salad, soda and coffee. We ask that all handlers bring a side dish. Please call Paul Heidenburg on (518)966-8738. Paul will coordinate with all handlers what should be brought.

Let us spend the rest of this column on our week in Canada. In our last issue, we told you that we were going out to press right in the middle of trying to get ready to travel into Canada to participate in the Eastern Ontario Triple Crown. What a mess! Trying to pack, get the farm ready for someone else to care for, get that issue out.

On the bright side, we had a great trip. What a treat. All three trials were in lovely settings, and (as we suggested last month) Sheep Dog trials *should* be fun. **THEY WERE!** For this family, we were able to spend a lot of time together. Beth Ann and Lauren met new friends. We cannot be more positive on the whole adventure. It would be hard to pick our most favorite of the three trials, but it would have to be Waupoos Island. Why? The sheep were difficult (but not impossible). There were no fences. And the picture on the front cover says it ALL. An empty pen is what most handlers saw when they ran out of time. Over the entire three days less than a dozen dogs got their sheep into the pen.

BUT, Fearnley Davies went all out to make this adventure

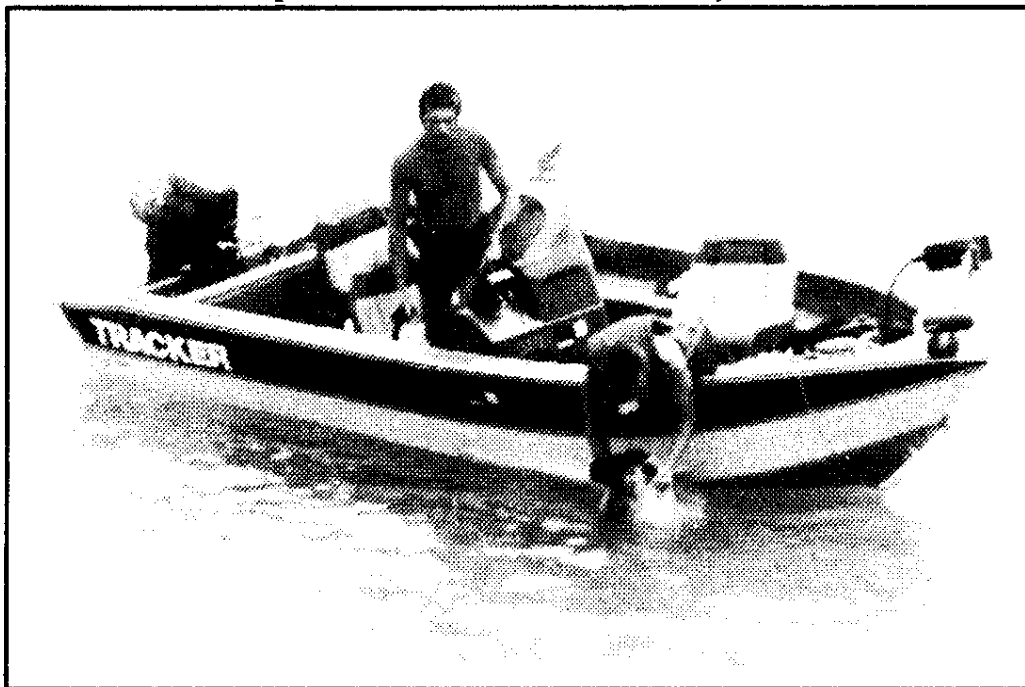
Boot continued

big step in Boot's training. She needs to learn that we are working the sheep together. Previously she has been working the sheep on her own, using me as a balance point. Now I am asking her to work the sheep to my instructions rather than just her instincts. This is a major step in a young dog's training. The more natural instinct dogs have, the tougher it is for them to accept instructions they don't feel they need. Boot is a dog with tremendous natural ability and a plan of her own.

There is a magic solution to this problem. Patience. Boot's natural ability to gather

as pleasurable as he could. He ferried us over to the island late into the night, and ferried us back even later. He put out sheep. He ran the tractors. He made sure that the lamb barbecue went well. He worried over us all having a good time.

Here we were on a 900 acre island, camped on the top of a little knoll, looking out on three sides at Lake Ontario, eating dinner as the full moon rose over the lake. Here we were in the middle of an idyllic vacation spot that any American tourist would give his eye teeth to be at. Here we had to work with difficult sheep that had to be held in only by the dog and handler -- no fences to help us. On the



Anybody ready to go WATERSKIING???

and her inbred desire to work for me and please me will eventually win out, if I have enough patience. Many dogs learn to obey commands by gradually improving a little bit with each training session. Boot, alas, belongs to the AHA! class of Border Collies. I work at teaching her something new for days or weeks and we make no progress and then suddenly in one session AHA! she understands it fully. Boot and I worked on flanking through all of April and into early May with almost no progress.

Our training sessions during this period pretty much fell into the same pattern we are still following. Each ses-

whole? **WE HAD A GREAT TIME!**

Pittsburg Township was the most difficult of the three. These sheep were not only difficult, they were impossible -- **BUT THEY WERE GOOD SWIMMERS.** At least two of them went for a dip in the St. Lawrence River. One got out to the middle of the river before she was rescued by a passing waterskiier. Peter Piper and his dog (Q T PYE) spent as much time rounding up his sheep by boat as he spent on the field. That was a long trip from Tennessee to see the Canadian side of the river by boat. Still, when we look back on the entire week as a vacation from our normal work-a-day world, we will all

have to admit that it was a worthwhile trip. And, what wonderful campfire stories will be told of **THIS** adventure.

Gene and Lynne Sheninger

NEBCA New
213 Split Rock Road
Boonton, NJ 07005

Editors
Gene & Lynne Sheninger
(201)299-9785

NEBCA Officers
President
Steve Wetmore (802)765-4466

Vice President
Becky Peterson (413)624-5562

Secretary/Treasurer
Lynn Deschambeault
(207)452-2898

Trials Committee
Chairperson
Becky Peterson (413)624-5562
Bell Rd. Box 395
Leyden, MA 01337

Nursery Trials Committee
Chairperson
Lynnette Milleville
Sand Hill Rd.
Portland, CT 06480
(203)342-4279

NEBCA News is published quarterly as the official publication of the Northeast Border Collie Association. Four issues are published on March 1, June 1, September 1 and December 1. Supplements will be issued during the trialing months. Subscription is by membership to the association. Annual membership dues are \$10.00 per individual or \$15.00 per farm. To join, send your name and address along with your dues to Lynn Deschambeault, RR 1 Box 897B, Bridgton, ME 04009. Make checks payable to NEBCA.

DISPLAY ADVERTISING
Prices are for camera ready ads. Display Advertising will only appear in the 4 quarterly issues:

single issues 1 year(4 issues)		
Business Cards		
(2"x 3 1/2")	\$15	\$50
1/4 Page	\$35	\$100
1/2 Page	\$50	\$150
Full Page	\$75	\$225

non-members add 20%
If choosing the yearly price, ad may not change for the entire four issues without an additional fee.

continued page 4

OTTAWA VALLEY SHEEP DOG TRIALS

Stittsville, Ontario August 4-5, 1990

Judge: Vergil Holland

Trial Manager: Evelyn Neuendorff

Novice/Novice 8/4/90

11 Dogs to the Post Total Points 90

Ribbons to 5th - Trophies to 3rd

1. Pat Buckley	Glen	74
2. J. P. LaLonde	Madi	73
3. Karen Greenlees	Major	70
4. Pat Buckley	Dice	66
5. Don Vincent	Gyp	52.5

Pro-Novice 8/4/90

9 Dogs to the Post Total Points 90

Ribbons to 5th - Trophies to 3rd

1. Bruce Smart	Skye	77.5
2. Karen Thomason	Lad	76.5
3. Walt Jagger	Kit	73.5
4. Amanda Milliken	Hazel	67
5. Lynn Deschambeault	Mindy	66

Ranch 8/4/90

6 Dogs to the Post Total Points 100

Ribbons to 5th - Trophies to 3rd

1. Walt Jagger	Celt	83
2. Vergil Holland	Kip	68.5
3. Roger Deschambeault	Tyson	66
4. Alex McKinven	Nell	28
5. Gabe Merrill	Zane	26

Open 8/4/90

32 Dogs to the Post Total Points 110

Ribbons to 5th - Cash to 10th

1. Ralph Pulfer	Sweep	107
2. Jim Clark	Maggie	103
3. Mike Canaday	Sandy	99.5
4. Ralph Pulfer	Dan	98.5
5. Evelyn Neuendorff	Lenard	94.5
6. Amanda Milliken	Jack	93
7. Cheryl J. Williams	Nell	92.5
8. Walt Jagger	Jill	91
9. Cheryl J. Williams	Meg	88
10. Lynn Deschambeault	Dandy	87.5

Novice/Novice 8/5/90

12 Dogs to the Post Total Points 90

Ribbons to 5th - Trophies to 3rd

1. Pat Buckley	Dice	80
2. Karen Greenlees	Major	78.5
3. J. P. LaLonde	Madi	74.5
4. David Young	Ben	68
5. Loretta Decarie	Dolly	55

Trophy: Best Gather J. P. LaLonde Madi

Pro-Novice 8/5/90

9 Dogs to the Post Total Points 90

Ribbons to 5th - Trophies to 3rd

1. Pat Buckley	Bart	83
2. Walt Jagger	Kit	70
3. Amanda Milliken	Hazel	61
4. Karen Thomason	Lad	57.5
5. Ted Bell	Kate	56

Trophy: Best Gather Pat Buckley Bart

Trophy: Best Performance by a Canadian Bred Dog

Combined Score Over Two Days (Novice & Pro-Novice)

Karen Greenlees Major

Ranch 8/5/90

5 Dogs to the Post Total Points 100

Ribbons to 5th - Trophies to 3rd

1. Walt Jagger	Celt	74
2. Vergil Holland	Kip	74
3. Roger Deschambeault	Tyson	70
4. Bernie Stahl	Rhett	28
5. Gabe Merrill	Zane	17

Trophy: Best Gather Walt Jagger Celt

Open 8/5/90

31 Dogs to the Post Total Points 110

Ribbons to 5th - Cash to 10th

1. Walt Jagger	Queen	103.5
2. Cheryl J. Williams	Kim	103
3. Mike Canaday	Ben	101
4. Walt Jagger	Dot	101
5. Ralph Pulfer	Sweep	100.5
6. Roger Deschambeault	Sue	99.5
7. Jim Clark	Maggie	99
8. Ralph Pulfer	Dan	98
9. Roger Deschambeault	Cap	96
10. Jim Clark	Scott	94

TROPHIES:

Best Gather Ralph Pulfer Sweep

Best Drive Cheryl J. Williams Kim

Best Shed Evelyn Neuendorff Lenard

Best Time Jim Clark Scott

Open Purse \$1000. Best Combined Score Over Two Days to 10th. Champion and Reserve Champion Trophies and Ribbons

1. Ralph Pulfer	Sweep	207.5
2. Jim Clark	Maggie	202
3. Ralph Pulfer	Dan	196.5
4. Evelyn Neuendorff	Lenard	186.5
5. Cheryl J. Williams	Kim	182.5
6. Walt Jagger	Jill	179.5
7. Roger Deschambeault	Sue	179.5
8. Walt Jagger	Dot	178
9. Lynn Deschambeault	Daisy	175.5
10. Jim Clark	Scott	175

The Shepherdess Shoppe

A complete line of custom-made Border Collie Items, including clothing.



CHERYL JAGGER WILLIAMS

RD#1, Box 77A
HOP BOTTOM, PA
18824
(717) 289-4733

WAUPOOS ISLAND SHEEP DOG TRIALS

Waupoos Island, Ontario

August 8-9, 1990

Judge: John Atkinson

Open	8/8/90	
1. Ralph Pulfer	Dan	80
2. Ralph Pulfer	Sweep	78
3. Dave Webster	Cap	77
4. Walt Jagger	Dot	76
5. Gene Sheninger	Bonnie	68
6. Cheryl Jagger Williams	Nell	64
7. Jim Clark	Maggie	64
8. Walt Jagger	Queen	63
9. Roger Deschambeault	Glen	61
10. Roger Deschambeault	Cap	57

Open	8/9/90	
1. Jim Clark	Maggie	91
2. Jim Clark	Scott	72
3. Dave Webster	Gill	70
4. Cheryl Jagger Williams	Nell	67
5. Cheryl Jagger Williams	Kim	67
6. Dave Webster	Cap	59
7. Amanda Milliken	Jack	57
8. Gene Sheninger	Nap	57
9. Roger Deschambeault	Sue	56
10. Ralph Pulfer	Sweep	50

PITTSBURG TOWNSHIP SHEEP DOG TRIALS

Grass Creek Park

August 11-12, 1990

Judge: John Atkinson

Open	8/11/90	
1. Ralph Pulfer	Sweep	83
2. Walt Jagger	Dot	81
3. Ralph Pulfer	Dan	77
4. Amanda Milliken	Jack	73
5. Cheryl Jagger Williams	Nell	72
6. Mike Canaday	Tibby	69
7. Amanda Milliken	Hazel	67
8. Gene Sheninger	Bonnie	66
9. Pat Buckley	Bart	63
10. Evelyn Neuendorff	Lenard	63

Open	8/12/90	
1. Mike Canaday	Tibby	84
2. Jim Clark	Maggie	83
3. Walt Jagger	Jill	82
4. Ralph Pulfer	Dan	77
5. Amanda Milliken	Jack	76
6. Walt Jagger	Queen	76
7. Jim Clark	Scott	72
8. Cheryl Jagger Williams	Nell	69
9. Evelyn Neuendorff	Lenard	66
10. Ralph Pulfer	Sweep	65

Boot continued

of her training, if Boot crosses the course I call her back, set her up and send her again. Its not usually necessary to say anything to a dog for doing this. Just calling them back and re-sending them is usually enough. If Boot crosses over again, I call her back again. I will then move a little closer to the sheep so that she gets it right the third time. Working the sheep is her reward for doing the correct outrun. Not working the sheep is her punishment for crossing the course. If Boot lags behind the sheep too much on the fetch, I call her on and she now responds readily. She has improved enormously in this, and I believe the problem will probably disappear as her training progresses.

After the fetch, we then take the sheep for a walk. I walk ahead, and Boot works the sheep up to me. If she allows them to get past me, I turn around and go the other way, giving her the appropriate flank command to turn the sheep back to me.

For a few minutes in each training session, I try to get Boot to flank the way I tell her to. Then we do a few more outruns, a little more wearing, and a little driving. Like most young dogs learning to drive, Boot can go a few feet and then tries to sneak around the flock to bring the sheep back to me. I correct this with a soft "uh uhh" or "no, Boot, here". Again, the secret is to do a little bit and wait for the lesson to sink in. As in learning the flanks, it takes a lot of short little driving lessons for the notion to take hold. Like all of the early training, this all takes a lot of repetition and patience. It is no good going out to the sheep determined to "teach the d*** dog" to flank today. Boot will learn in her own time. All I can do is attempt to show her as clearly as possible what I want her to do and wait for her to learn it.

Quite suddenly in mid-May both flanking and driving seemed to take hold for Boot. She began to flank quite readily when I commanded her to. She still doesn't know

which command is for which direction, but she does know that the commands are for running around the flock. She also became much more willing to drive the sheep. She positions herself on the heavy side of the sheep and keeps walking until I tell her to flank around the flock and bring them back. This results in some strange journeys, but her intentions are good.

This is the beginning of the part of the training I enjoy the most. Boot is now working for me and she is trying very hard to learn what I want. We can now practice for 10 minutes to half an hour at a time. I try to practice with her before I go to work in the morning or after work in the evening. We do an occasional long straight drive or a few very short drives. Primarily, however, I am working hard to teach Boot her flanks. We spend part of each session on flank commands, interspersed with fetching and outruns. I am asking Boot to do more complicated outruns. I send her from where she can't see the

sheep. I position the sheep in places where she has to approach them up hills. I have her lift them off the fence or out of a corner. I ask her to fetch them over the stream or near heavy pressure. I am now using Boot more and more around the farm. When I move sheep from field to field I use Boot. When the sheep get out, I use Boot. However, I don't use her worming or working the young lambs or in other places where I am likely to run short of patience with the sheep and the dog. I have more experienced dogs that can do this work, and so I can wait until Boot is more mature before asking her to do a grown dog's work for an uneven tempered handler. Practical experience is the best teacher of all for a young dog, but it is important to continue to handle the dog with the same patience and gentleness that they have learned to expect all through their training.

NEXT ISSUE: PREPARING FOR BOOT'S FIRST TRIAL

SPECIAL END OF THE SEASON

NURSERY TRIAL SUMMARY

A REMINDER TO ALL NURSERY TRIALERS:

You may run your dog in only one class. If you move up a class, your dog must stay there (exception -- a Ranch dog may run in Open and drop back to ranch if he does not place in Open). Two people are not allowed to run the same dog in different classes. If you have moved your dog up a class and want to bring him down because you've realized he's not ready, you must request permission from the Nursery Trials Committee.

Also, trial managers are not expected to be policemen. We're working on the honor system. That's why updated points are listed in the newsletter for nursery dogs throughout the trial season. Please refer to the list and tally where your dog belongs. For those who forgot, here's how points are figured:

1. The trial must be a qualifying trial:

1990 Qualified Nursery Trials:

5/6/90 Cooperlane Farm Nursery Trial
5/13/90 Nearfield Farm Nursery Trial
5/26/90 Mass. Sheep & Woolcraft Fair
6/15/90 Sheepy Hollow Nursery Trial
6/23-24/90 Keystone State Stock Dog Trial
7/8/90 Bittersweet Farm Nursery Trial
7/15/90 Merlynn Kennel Nursery Trial
7/29/90 Brooks ME Nursery Trial
8/4-5/90 Ottawa Valley Nursery Trial

8/26/90 Spring Valley Farm Nursery Trial
9/1-2/90 Rockaway Township Nursery Trial
9/15-16/90 Fern Hall Sheep Dog Trial

2. The points chart goes like this:

1-2 Dogs Ran:
1st Place 2 pts
2nd Place 1 pt

3-6 Dogs Ran:
1st Place 3 pts
2nd Place 2 pts
3rd Place 1 pt

7-9 Dogs Ran:
1st Place 4 pts
2nd Place 3 pts
3rd Place 2 pts
4th Place 1 pt

10 or More Dogs Ran:
1st Place 5 pts
2nd Place 4 pts
3rd Place 3 pts
4th Place 2 pts
5th Place 1 pt

If anyone ever has a question as to how many points their dog has, just call Eve Marschark at 215-795-2023 before 9 p.m. I would be happy to help.

It seems with each year the Nursery Trials are running better and smoother, but there are still a few glitches to work out. All suggestions and observations are welcomed. The Nursery Trials Committee is discussing some changes for the 1991 season. Please contact either Lynnette or myself with your concerns.

Thank you. Happy Trial-ing!

Eve Marschark

1990 NURSERY TRIAL POINTS

Nursery Trial Points Accumulated as of September 16, 1990 (Active Dogs Only). See previous issues of NEBCA News for listing on inactive dogs.

Buckley, Pat	Bart	PN	8 -> Open
(Ran & Placed in Open)			
Buckley, Pat	Dice	N	7
Buckley, Pat	Glen	N	5
Bennett, Ann	Nell	N	1
Campion, Carol	Nip	PN	10 -> Ranch
Campion, Larry	Ky	PN	6
Cassel, Gwen	Dash	R	10 -> Open
Craddock, Susanne	Wicket	N	1
Czekalski, Diane	Kim	R	4
Decarie, Lorretta	Dolly	N	1
Deschambeault, Lynn	Zac	PN	2
Deschambeault, Roger	Tyson	R	10 -> Open
Fogt, Casey	Doll	PN	4
Fogt, Casey	Tru	R	4
Gregor, Bill	Andy	N	2
Gregor, Bill	Quill	N	5
Greenlees, Karen	Dan	N	2
Greenlees, Karen	Major	N	13 -> P/N
Hamilton, Dayle	Beth	R	9
Holland, Vergil	Kip	R	7
Holland, Vergil	Duke	PN	4
Huntsberger,	Alec	PN	3
Jagger, Walt	Celt	R	10 -> Open
Jagger, Walt	Kit	R	10 -> Open
Jenkins, Dave	Bonnie	R	1
Kindig, Debbie	Ringo	R	5
Kindig, Kim	Ellie	N	4
LaLonde, J. P.	Madi	N	7
Lambert, Bev	Boot	PN	2
Lambert, Bev	Tip	PN	3
Leonard, Denise	Tess	R	13 -> Open
Marschark, Eve	Coach	PN	3
Marschark, Eve	Kate	R	3
Marschark, Eve	Rin	PN	4
Marschark, Eve	Shane	R	1
Marschark, Len	Bess	PN	6
Merrill, Debbie	Bonnie	N	4
Merrill, Gabe	Zane	R	1
Merrill, Gabe	Doc	PN	2
Milliken, Amanda	Hazel	PN	11 -> Open
(Ran & Placed in Open)			
Milliken, Amanda	Jill	PN	1
Morgan, Eunice	Bridget	N	3
Murray, Heather	Nell	N	1
Murray, Sylvia	Duke	PN	4
Murray, Sylvia	Nell	P	3
Neuendorff, Evelyn	Lenard	R	10 -> Open

continued page 6

Overly, Edith	Skye	PN	6
Overly, Edith	Tweed	R	11 -> Open
Peterson, Becky	Taff	PN	3
Pobatschnig, Kathy	Jill	N	4
Reed, Walt	Mac	N	10 -> PN
Reitbach, Werner	Kip	N	13 -> PN
Robinson, Bill	Misty	PN	7
Roche, John	Ben	PN	2
Roche, John	Jet	N	5
Rosensteel, Barbara	Nan	R	9
Schafer, Lisa	Glen	PN	0 *
Schafer, Lisa	Mirk	R	5
Schafer, Lisa	Spook	R	11 -> Open
Senasseck, Jeff	Shep	N	1
Sheninger, Gene	Robin	PN	6
Sigel, Ken	Sally	R	3
Sigel, Ken	Ben	N	14 -> PN
Smart, Bruce	Skye	R	5
Smith, Sue	Lass	R	8
Stahl, Bernie	Rhett	R	3
Tagtmeyer, Charlotte	Freckle	PN	1
Thomason, Karen	Ladd	PN	4
Vincent, Don	Gyp	N	1
Wetmore, Steve	Mirk	PN	10 -> Ranch
Woessner, Dee	Abbie	N	4
Young, David	Ben	N	9

PLEASE REMEMBER THAT WE NEED YOUR HELP WITH THIS YEAR'S CHAMPIONSHIP TRIAL. WE NEED AS MANY OF YOU AS POSSIBLE IN ORDER TO MAKE THIS YEAR'S EVENT A SUCCESS.

WE NEED ADS FOR OUR PROGRAM, CONTRIBUTIONS OF CASH FOR EXPENSES, AND PRODUCT DONATIONS THAT CAN BE GIVEN OUT AS PRIZES.

COME ON OUT AND HELP

THE 1991 NEBCA CALENDARS ARE STILL AVAILABLE FROM STEVE WETMORE. THIS IMPORTANT FUND-RAISING PROJECT IS VITAL TO OUR CLUB. THROUGH THESE SALES, WE CAN CONTINUE TO KEEP OUR MEMBERSHIP FEES AS LOW AS THEY ARE.

* N/N dog - handler may only run as low as PN

Use the membership form below for new members or a renewal. Renewals are due on January 1, 1991 for current members. Be sure to send it to Lynn Deschambeault. DO NOT SEND IT TO YOUR NEBCA NEWS EDITORS. Any new member who joined after July 1, 1990 need not renew until January 1, 1992.

Northeast Border Collie Association Membership Application

NAME _____ **DATE** _____

ADDRESS _____

CITY/STATE _____ **ZIP CODE** _____

PHONE _____

Mail to:

Lynn Deschambeault
RR 1 Box 897B
Bridgton, ME 04009

Annual Membership -- Individual \$10.00 _____

Family or Farm -- \$15.00 _____

TOTAL _____

Make checks payable to NEBCA

SKOWHEGAN FAIR OPEN TRIAL

Skowhegan, ME

August 12, 1990

The trial at the Skowhegan Fairgrounds was judged by Steve Wetmore and attended by a large crowd of interested spectators. Twenty dogs each ran twice and the scores from the two runs were added together for the top 11 placings.

1.	Lynn Deschambeault	Dandy
2.	Lynn Deschambeault	Daisey
3.	Betty Levin	Kelty
4.	Beverly Lambert	Lark
5.	Roger Deschambeault	Cap
6.	Roger Deschambeault	Sue
7.	Beverly Lambert	Jetta
8.	Alex McKinven	Rob
9.	Doug McDonough	Tweed
10.	Alex McKinven	Glen
11.	Crawford Taisey	Kate

Special awards went to:

High Preliminary Dog - Daisey

High Scoring Dog - Dandy

High Penning - Cap

Best Drives - Dandy

Best Gather - Lark

EMPIRE STATE OPEN SHEEP DOG TRIAL

Altamont, NY

August 18, 1990

1.	Mike Canaday	Ben	93
2.	Betty Levin	Kelty	90
3.	Roger Deschambeault	Cap	89
4.	Walt Jagger	Queen	88
5.	Amanda Milliken	Jack	88
6.	Roger Deschambeault	Sue	88
7.	Mike Canaday	Sandy	88
8.	Beverly Lambert	Jet	87
9.	Becky Peterson	Fly	87
10.	Beverly Lambert	Lark	86

NEW YORK STATE CHAMPIONSHIP

Altamont, NY

August 19, 1990

1.	Beverly Lambert	Lark	95
2.	Roger Deschambeault	Cap	91
3.	Mike Canaday	Sandy	91
4.	Becky Peterson	Queen	90
5.	Roger Deschambeault	Sue	89
6.	Betty Levin	Kelty	88
7.	Paul Heidenberg	Coby	87
8.	Pat Buckley	Bart	87
9.	Walt Jagger	Dot	86
10.	Beverly Lambert	Kate	85

SCOTTISH FESTIVAL OPEN TRIAL

Quechee, VT

8/25/90

1.	Beverly Lambert	Lark	92
2.	Dave Webster	Cap	92
3.	Lynn Deschambeault	Daisy	92
4.	Dave Webster	Gill	90
5.	Walt Jagger	Queen	90
6.	Steve Wetmore	Ben	88
7.	Edgar Gould	Jesse	88
8.	Roger Deschambeault	Tyson	87
9.	Amanda Milliken	Jack	87
10.	Mike Canaday	Tibby	86

SPRING VALLEY FARM NURSERY TRIAL

Strafford, VT

August 26, 1990

Novice-Novice, Judged by Betty Levin

14 Dogs to the Post (90 Points Total)

1.	David Young	Ben	79.5
2.	Karen Greenlees	Major	69
3.	Werner Reitboeck	Kip	66
4.	Karen Greenlees	Dan	64
5.	Jeff Senesack	Shep	59

Pro-Novice, Judged by Betty Levin

9 Dogs to the Post (90 Points Total)

1.	Edie Overly	Skye	78
2.	Steve Wetmore	Mirk	75
3.	Gene Sheninger	Robin	74.5
4.	Amanda Milliken	Jill	74
5.	Beverly Lambert	Boot	71

Ranch, Judged by David Griffiths

8 Dogs to the Post (90 Points Total)

1.	Larry Champion	Ky	77
2.	Denise Leonard	Tess	74
3.	Bruce Smart	Skye	73
4.	Gabe Merrill	Zane	61
5.	Bernie Stahl	Rhett	60

VIDEO REVIEW

by Kristen Whittle

"Training the Working Border Collie" is a well organized 2-part training series put together by Tony and Barbara Collins of Ruthin, Wales. Many of you know of Barbara from her many years as the editor of the Working Sheepdog News and co-author of the book "A Way of Life" with H. Glyn Jones. Her husband Tony is a well known and accomplished handler and trainer in Wales.

The first tape goes over all the basics from selecting a pup to early handling and training, while the second tape gets you started on the different phases of work. Both tapes are rather long (about 90 minutes) and I found it nice to have a remote with fast forward handy. But for the beginner they do a good job of emphasizing important points and concepts of training. I think it is dif-

ficult to put together a good training tape that will cover everyone's needs, since no two dogs approach working identically. But I like what this couple has to say and, thanks to Barbara's writing and editing skills, it is well presented.

There are an awful lot of videos out there that I would recommend a beginner not see! This video I would recommend for its sound ideas. Even the most advanced handler will enjoy not only the countryside and the variety of dogs presented, but the treat of watching Merion Jones, 1988 International Supreme Champion and his dog Spot.

This video is available to NEBCA members through the Lending Library.

For more information about reserving it, contact Beverly Lambert at Dickey Hill Road RFD #1, Brooks, ME 04921 (207)525-3223.

TOTAL POINTS ACCUMULATED THROUGH 9/9/90

Handler	Dog	Total Points
Walt Jagger	Queen	100
Beverly Lambert	Lark	81
Walt Jagger	Dot	76
Roger Deschambeault	Sue	74
Beverly Lambert	Jet	67
Roger Deschambeault	Cap	67
Cheryl Jagger Williams	Nell	66
Walt Jagger	Jill	66
Mike Canaday	Sandy	54
Amanda Milliken	Jack	52
Betty Levin	Kelty	51
Mike Canaday	Ben	48
Mike Canaday	Tibby	46
Cheryl Jagger Williams	Kim	44
Jim Clark	Maggie	39
Lynn Deschambeault	Daisy	36
Dave Webster	Cap	36
Dave Webster	Gill	36
Gene Sheninger	Nap	31
Gene Sheninger	Bonnie	27
Jim Clark	Scott	23
Becky Peterson	Queen	22
Cheryl Jagger Williams	Meg	22
Pat Buckley	Bart	22
Amanda Milliken	Hazel	19
Eve Marschark	Spin	18
Lynn Deschambeault	Dandy	17
Roger Deschambeault	Glen	17
Becky Peterson	Fly	17
Steve Wetmore	Ben	16
Nathan Mooney	Spot	16
Paul Heidenberg	Coby	12
Cheryl Jagger Williams	Tess	12
Evelyn Neuendorff	Lenard	11
Dick Williams	Dudley	11
Dick Williams	PDQ	9
Roger Deschambeault	Tyson	8
Nathan Mooney	Fleet	7
Beverly Lambert	Mac	7
Beverly Lambert	Kate	7
Ted Bell	Shep	7
Jack Monsour*	Mirk	6
Dayle Hamilton	Heidi	5
Dick Williams	Star	5
Paul Heidenberg	Lynn	4
Edgar Gould	Jesse	4
Lisa Schafer*	Mirk	3
Walt Jagger	Tweed	3
Alex McKinven	Rob	3
Dayle Hamilton	Beth	3
Amanda Milliken	Waifer	3
Doug McDonough	Tweed	2
Lynnette Milleville	Magic	2
Lynn Deschambeault	Lacey	2
Edie Overly	Tweed	2
Lisa Schafer*	Spook	2
Alex McKinven	Glen	1
Dayle Hamilton	Spot	1

*Nonmember

UPCOMING TRIAL DATES

*This is the home stretch. These are all that remain of the season's open trials. We have placed an asterisk * next to those that have been approved by the Trials Committee as qualifying for NEBCA points.*

*** September 29:** New Hampshire State Championship, East Conway, NH. Open Trial. Contact Roger Deschambeault, HRC 16, Ctr. Conway, NH 03813 (603)939-2255.

*** September 30:** Fryeburg Fair, Fryeburg, ME. Open Trial. Contact Wayne Bartlett, P.O. Box 270, Denmark, ME 04022 (207)452-2460.

October 6 & 7: NEBCA Fall Foliage Championship. This year held at Altamont, NY. Contact Mike Canaday, RD 2 Box 365, Meadowdale Rd., Altamont, NY 12009 (518)861-6049.

The following trials have been scheduled to qualify for 1991:

October 13 & 14: Eastern Ontario Border Collie Assoc. Sheep Dog Trials. Contact Amanda Millikin, RR 2, Kingston, Ontario K715H6 (613)546-1451.

October 26: Cumberland Open Ranch Trial, Carlisle PA. Contact Nathan Mooney 245 Alfes Rd., Carlisle, PA 17013 (717)249-5695.

October 27 & 28: Cumberland Open Trial, Carlisle PA. Two 1-day open trials. Contact Natha Mooney 245 Alfes Rd., Carlisle, PA 17013 (717)249-5695.

CLINIC AND PUPPY DAYS

This listing is provided as a service to NEBCA members, but in no way represents an endorsement of the trainers or sponsors of these events by NEBCA NEWS or the Northeast Border Collie Association.

October 13-14: JACK KNOX CLINIC at Keswick Farm in Fitzwilliam, NH. There will also be a one-day clinic for experienced handlers and started-to-trained dogs to do advanced work with Jack on October 12. For registration forms, telephone Sally Lacy at (603)242-3017 or write to P.O. Box 487, Fitzwilliam, NH 03447.

October 13: STOCK-DOG CLINIC with Vergil Holland in Hobart, NY. For farm and trial work. \$35.00. For more information contact Vergil Holland at (607)538-9160 or Jackie Rohrig at (914)228-1206.

October 20: CLINIC conducted by Beverly Lambert for beginning dogs. Starting at 9:00 a.m. For more information contact Beverly Lam-

bert, Dickey Hill Road RFD #1, Brooks, ME 04921 or call (207) 525-3223.

October 20-21: CLINIC instructed by Cheryl Jagger Williams. Held at Ivyrose Farm. Beginners through tri-alers. All types of dog-broke sheep. Contact: Eve Marschark, Ivyrose Farm, P.O. Box 397, Bedminster, PA 18910 or call (215)795-2023 before 9 p.m.

November 3-4: STOCK-DOG TRAINING CLINIC conducted by Cheryl Jagger-Williams at O'Brave Farm. For beginner thru experienced dogs and/or handlers. Starting at 9:00 a.m. For more information contact Gwen Cassel or John Viola at (607) 674-4541 or write O'Brave Farm, 126A Fusch Road, Columbus, NY 13460.

CLASSIFIED:

Classified ads cost \$3.00 per issue or \$10.00 per year (four issues and all supplements - no changes) for 50 words or less. \$.20 per word will be charged for longer ads.

THE SHEPHERD'S DOGGE, quarterly journal of the Border Collie and his ancestors, devoted to sheepdog culture and lore, historic and contemporary, featuring interviews, photographs, art, stories, poems, cartoons, articles, reviews and more. \$12.50/year to the Shepherd's Dogge, Woolgather Farm, 75N Bear Hill Road, Merrimac, MA 01860.

BORDER CORNER Border Collie specialty shop. Inventory includes clothing, posters, notecards, a wide selection of books, jewelry, imported figurines and much, much more. For information contact Kathy Kemper, 212 Salem Drive, Everman, Texas 76140, (817)568-2515.

REGISTERED BORDER COLLIE PUPPIES from top working/trial dogs (all dogs OFA good). Stud service available. Training services for dogs and handlers. Beverly Lambert, RFD 1 Box 2280, Brooks, Maine 04921 (207)525-3223.

SHEPHERDESS SHOPPE Featuring clothing with Border Collie insignias and Border Collie Items; Visors, Hats, Jackets, Sweaters, Key Chains, Pins, etc. A new line of Wool-rich items available. For information call or write Cheryl Jagger-Williams, RD 1 Box 77A Hop Bottom, PA 18824 (717)289-4733.

BORDER COLLIE TRAINING SERVICES both for handler and dogs. For more information call or write Cheryl Jagger-Williams, RD 1 Box 77A, Hop Bottom, PA 18824 (717)289-4733.

BORDER COLLIE AND HANDLER TRAINING SERVICES: Vast open fields and plenty of sheep. Training clinics, judging clinics and demonstrations offered. I also have for sale several "well-dogged" sheep, ideal for training puppies -- \$60.00. Contact Vergil Holland, Ketecho Farm, RD 1 Box 131, Hobart, NY 13788 (607)538-9160.

LITTER DUE first of October out of Imp. Betsy and Dandy (former NEBCA Champion), both very powerful, well-bred dogs. Both PRA(-) and OFA Cert. Tricolor, black & whites and blue merles expected. Copies of pedigrees available. These pups will be excellent working, pet or obedience prospects. Call after 10 p.m. or leave message 1(207)452-2898 or write Lynn Deschambeault, Merlynn Kennel, RR 1, Box 897B, Bridgton, ME 04009.

BORDER COLLIE PUPPIES out of Beverly Lambert's Kate and Jet. Both parents are handsome rough coated dogs that have placed in many open competitions. Both have produced outstanding working dogs in the past. Pups are well marked black and white, ready to go in August. Both parents OFA good. Beverly Lambert (207)525-3223.

MUST PLACE 2 male Border Collies due to illness in family. Both dogs neutered and housebroken, exc. temperments. Call (203)535-4828 or (203)739-1988.

BORDER COLLIE PUPPIES whelped 5-28-90, exc. for pet or work. Call (203)535-4828 or (203)739-1988.

BORDER COLLIE PUPS out of W. Jagger's Tweed (NEBCA Fall Foliage Champion) and E. Marschark's Dela (R. Pulfer's Shep/Nan and W. Jagger's Vic/Floss-

Moss). Whelped Aug. 21. 2 males, 3 females. Eyes and hips checked. Call Eve Marschark (215)795-2023 before 9 p.m.

AVAILABLE FROM O'BRAE: BORDER COLLIES - 2-1/2 year old female, tri-color; has been started on sheep and goats; would be especially suitable for cattle/cows, will work alleys/paddock; small, quick, responsive, pugnacious at her work; (sister to Dash and Coach, but resembles and works like her father, Jagger's Vic). ALSO, looking for right work situation - 4 year old

black/white rough coat, imported female. Hard worker with a lot of style. Excellent in barns, small areas and along fences. Willing to work all day. Good gatherer, drives easily. Works best when much to do. Would also be an excellent obedience and/or agility worker. Athletic, happy, dependable. Contact Gwen Cassel (607)674-4541 after dark or early morning.

10/13/90 STOCKDOG CLINIC with Vergil Holland in Hobart, NY. For farm and trial work. \$35.00. FMI (607)538-9160 or (914)228-1206.



THE WORKING BORDER COLLIE

14933 Kirkwood Road, Sidney, Ohio 45365
(513) 492-2215

Today's Magazine For The Working Border Collie

- Articles from the leading Trainers in the U.S. & British Isles
- Veterinary column on Dogs, Sheep, and Cattle
- Feature articles on Dogs & Handlers of the past & present
- Border Collie & Sheep Items
- Border Collie Breeder's Directory
- Trial & Clinic Dates

\$20.00/U.S. Subscription for 1 year
\$30.00/U.S. Subscription + your listing in the Border Collie Breeder's Directory
\$30.00/U.S. Subscription + your listing in Livestock Breeder's Directory
\$26.00/Canadian Subscription
\$28.00/Surface to Europe
\$38.00/Airmail to Europe

Payable in U.S. Funds Only

Bruce Fogt, Publisher --- Casey Fogt, Editor

BREEDERS DIRECTORY

This listing of breeders of Border Collies is for informational purposes and in no way represents an endorsement of these breeders by the Northeast Border Collie Association

Edward Bell
Bell's Border Collies
RR 2
Canfield, Ontario N0A 1C0
(416)774-3283

Stephanie Calder
Singing Falls Farm
RFD #4
Skowhegan, ME 04976
(207)474-2852

Pat and Mike Canaday
RD 2 Box 365
Meadowdale Road
Altamont, NY 12009
(518)861-6049

Gwen Cassel
O'Brac Border Collies
126A Fusch Road
Columbus, NY 13460
(607)674-4541

Border Corner
Kathy Kemper
212 Salem Drive
Everman, TX 76140
(817)568-2515

Gary & Diane Czekalski
Second Wind Kennels
RD #1 Box 63
Hop Bottom, PA 18824
(717)289-4823

Lynn Deschambeault
Merlynn Kennel
RR 1, Box 897B
Bridgton, ME 04009
(207)452-2898

Roger Deschambeault
Nearfield Farm
HCR Box 16
Ctr. Conway, NH 03813
(603)939-2255

Edgar Gould
Cooperlane Farm Ent
Shelburne Falls, MA 01370
(413)625-6496

Sheldon & Donna Hamblin
P.O. Box 1017
West Falmouth, MA 02574
(508)457-0558

Dayle & Joan Hamilton
34 Brown Brook Rd.
Southbury, CT 06488
(203)264-6348

Walt Jagger
Sheepy Hollow Farm
Box 233
Hop Bottom, PA 18824
(717)289-4663

Beverly Lambert
Douglas McDonough
Dickey Hill Road RFD #1
Brooks, ME 04921
(207)525-3223

Janet E. Larson
Caora Con Kennels
6 Pinecrest Lane
Durham, NH 03824
(603)868-5313

Richard & Barbara Leverett
Long View Farm
Box 308 Burrell Rd.
St. Johnsville, NY 13452
(518)568-2833

Betty Levin
Old Winter Street
Lincoln, MA 01773
(617)259-8799

Eve Marschark
Ivyrose Farm
Farm School Rd.
Bedminster, PA 18910
(215)795-2023

Alex McKinven
Cessnock Farm
RR 1
North Hatley, Quebec
J0B 2C0
Canada
(819)842-2975

Gabrielle Merrill
Misty Lane Border Collies
RFD 1 Box 20
Brownfield, ME 04010
(207)935-2520

Lynnette & Tim Milleville
Nutmeg Farm
Sand Hill Rd.
Portland, CT 06480
(203)342-4279

Sylvia C. Murray
Fleece and Feathers Farm
294B Cossaduck Hill Rd.
North Stonington, CT 06359
(203)889-7777

Lou Parcell
Sunset Garden Border Collie
61 S. Morningside Drive
Westport, CT 06880
(203)227-3545

Becky & Hoop Peterson
Orchard Valley Farm
Bell Rd. Box 395
Leyden, MA 01337
(413)624-5562

Anne B. Priest
Blue Island Farms
191 Old Mountain Rd.
Port Jervis, NY 12771
(914)856-3209

Gene & Lynne Sheninger
Wayside Farm
213 Split Rock Rd.
Boonton, NJ 07005
(201)299-9785

Crawford Taisey
207 Main Street
Freeport, ME 04032
(207)865-3852

Stephen Wetmore
Spring Valley Farm
PO Box 54
Strafford, VT 05072
(802)765-4466

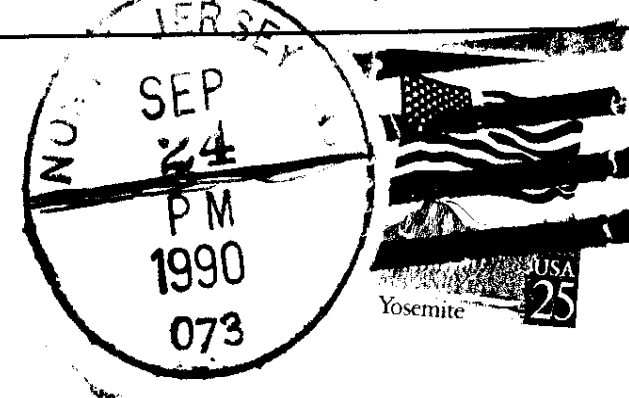
Kristen P. Whittle
Little Brook Farm
334 Russell Street
Sunderland, MA 01375
(413)665-3802

Dick & Cheryl Jagger-Williams
C.J.'s Acres
RR 1 Box 1374
Hop Bottom, PA 18824
(717)289-4733

© 1990 NEBCA News, Boonton, NJ 07005

NEBCA NEWS
213 Split Rock Road
Boonton, NJ 07005

Maria Mick
5962 Curry Rd. Ext.
Schenectady, NY 12303



*Rankine Ave
821*

*Bowie - State - Eastern Ave
Left*