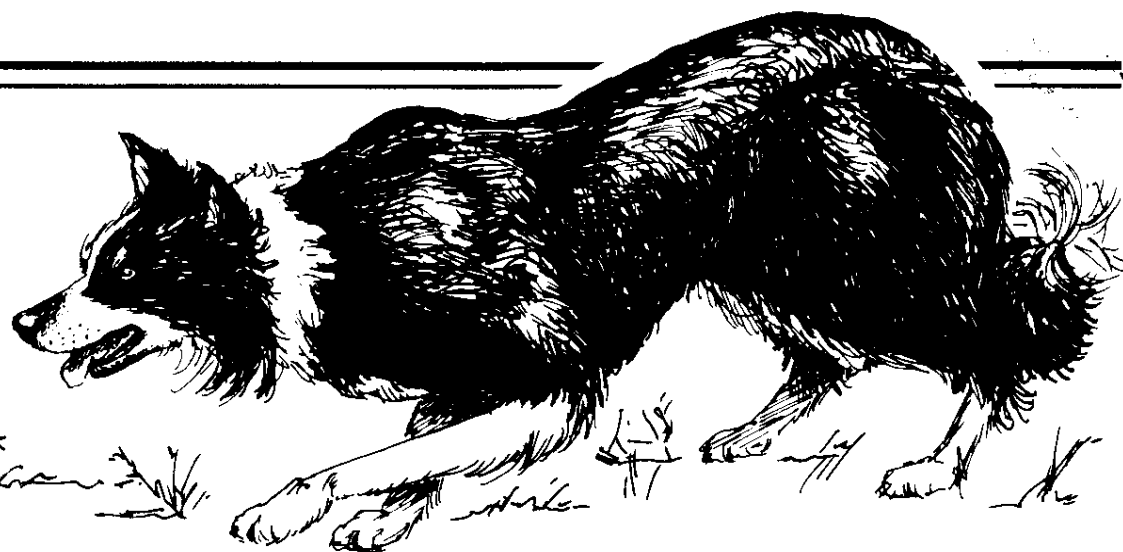


# NEBCA News



SPRING 1990

AN OFFICIAL PUBLICATION OF THE NORTHEAST BORDER COLLIE ASSOCIATION

VOLUME 8 • NUMBER 1

© 1990 NEBCA News, Boonton, NJ 07005

## 1989 NORTHEAST CHAMPIONS

by Cheryl Jagger Williams

The Northeast Border Collie Association is proud to present its two Champions for the year 1989. For many years the Association has had a "High Point Champion". This dog gains points from the entire trial season beginning in May with the University of Connecticut Trial and ending in October with the Fryeburg, Maine Trials.

High Points are earned by placing in the top ten in the open trials which are listed at the beginning of the year as qualifying trials. The year 1989 had approximately 32 trials during the season. A dog



*Dot and Tweed congratulating Walt Jagger*

earns points as follows: 10 points for first place, 9 points for second place, etc. The most consistent placing dogs earn the honors for the top ten High Point Competition and are recognized as such.

The NEBCA High Point Champion for 1989 was Walt Jagger's Dot, a nine year old female. Dot was bred by William Hamilton of Berwicks, Scotland. She was imported by Jack Knox in 1981 as a one year old pup. Robert Mattix of Indiana purchased her and sent her to Bruce Fogt to train. Under Bruce, she won the Virginia Blue Ridge Open in the spring of 1983, which is

*continued page 4*

### 1989 FALL FOLIAGE CHAMPIONSHIP

by Beverly Lambert

The 1989 Championship was sponsored by the City of Bangor, Maine and held on the infield of the Bass Park Racetrack in Bangor. The course and the sheep proved to be very demanding, trying the abilities of the dogs and the patience of the handlers. The weather was cool and sunny but very windy. The sheep were a combination of Dorsets and Scottish Black-faces. Each dog got a combination of both types. The Dorsets were hard to move, needing to be pushed around

the course. The Scotties were unpredictable. Some of the Scotties moved fairly easily, others bolted and a few were just plain crazy. There were enough outstanding runs to show it could be done and enough disasters to prove it wasn't easy.

The awards banquet was hosted by the City and held in the Bangor Civic Center. Dinner was followed by music from Alex McKinven and dancing. The good time made up for some of the frustration on the trial field.

The trial was judged by Doug Lamb from Scotland as-

*continued page 2*

### BOOT - PART 3

by Beverly Lambert

*Note: This is part three of the series on the progress of a young Border Collie named Boot. We are almost caught up with her training, even though she is now actually 9 months old. ed's.*

Boot is now 6 months old. She weighs about 25 pounds and can now run faster than the sheep. She is very keen to work. We are now working the sheep for about five or ten minutes every morning. I continue to encourage her to go around the sheep and hold them together and up to me.

Now that Boot has had a little experience at this, she can run further to get to the sheep for this gather. This is the beginning of her outrun. Boot has already shown that she has a very natural sort of outrun. When she leaves me to go to the sheep she almost always runs wider as she gets closer to the sheep. It is very important when working with this sort of dog never to ask them to go any wider then they do naturally. Dogs have a tendency to go wider as they get older anyway, so pushing Boot out any wider now could well result in her working much too far from the sheep as an adult.

*continued page 6*

## EDITORS' NOTES

Well, here is our second effort at putting out the NEBCA NEWS, and it is getting easier. It seems that much of what we had to do to get the first one ready has been reusable for this one. **WE STILL NEED YOUR SUPPORT WITH ARTICLES AND INFORMATION.** Denise and Kristen warned us that this would be our biggest problem.

This is the official Spring 1990 issue. We have published it much as it would have been published over the last several years. The typeset is similar, and the paper stock

equivalent. And, it will cost us accordingly. We would like your opinion on how we should do future issues, now that you have seen both the quality of the supplement and that of this regular issue. We can save substantial costs by printing at the quality level of the supplement, even though our personal time may increase. This issue was produced by a printer who charged us for the quality of the paper stock, the collating, and the stapling -- the latter two Lynne, Gene and Rick accomplished at our kitchen table at 12:00 midnight for the supplement. Let us know your preference.

### *Fall Foliage continued*

sisted by Edgar Gould and Alex McKinven. These three critics watched all of the runs from Edgar's car over the two days of the trial and had comments for any handler brave enough to ask.

With 36 dogs qualifying for the trial and 27 actually competing, time proved a big problem. For the final runs

the course had to be shortened along with the time. The end was no great surprise as Walt Jagger and Tweed showed themselves the team to beat in the first runs and stayed out in front all weekend to win the Championship. Tweed was the oldest dog in this year's competition. His closest competitor was one of the younger dogs as Beverly Lambert's Jet came in second place.

Best Gather	Walt Jagger & Tweed
Best Drive	Cheryl Jagger Williams & Kim
Best Shed	Roger Deschambeault & Sue
Best Pen	Walt Jagger & Tweed
High Point Run	Walt Jagger & Tweed
Hard Luck Trophy	Lynnette Milleville & Magic
Dog The Judge Would	
Most Like To Take Home	Jamie Huntsberger & Alec

### FINAL SCORES

1. Walt Jagger	Tweed	178	
2. Beverly Lambert	Jet	172	
3. Walt Jagger	Jill	170	
4. Lynn Deschambeault	Daisy	167	
5. Mike Canaday	Sandy	165	
6. Beverly Lambert	Mac	163	
7. Cheryl Jagger Williams	Kim	162	
8. Roger Deschambeault	Sue	159	
9. Beverly Lambert	Kate	158	(224 Total)
10. Becky Peterson	Fly	158	(206 Total)
11. Beverly Lambert	Lark	158	(158 Total)
12. Lynnette Milleville	Magic	155	
13. Mike Canaday	Ben	154	
14. Steve Wetmore	Jill	149	
15. Lynn Deschambeault	Dandy	148	

We have talked to many of you during the last several weeks. Training of our dogs is well in full swing in Pennsylvania and New Jersey, but hampered by snowdrifts and bitter cold in the North Country. How is lambing season going for all of you in the far North? In spite of urban sprawl, there is much to be said for living in the south of the Northeast. Some of our members have started trialing in Florida during this month. Doesn't that sound luxurious. Perhaps, for the next issue, we will start delivering some trial scores for the southern-most trials.

In this issue, we will bring you as up to date as possible on the training of Beverly Lambert's Boot. Keep a close eye on this series of articles for tips on how to progress with the training of your young Border Collie. The editors are particularly interested, since they have Boot's brother, Robin, in training as well. Look for Boot to compete against Gene Sheninger's Robin and Becky Peterson's Roy in the upcoming trial season -- 2 brothers and a sister from the same litter.

Also in this issue, we will close out the trial season of 1989. Pay close attention to the standings in the NEBCA high points competition and the NEBCA Fall Foliage Championship. These are the dogs to beat in the upcoming 1990 season.

Please don't forget, those of you who have been contributing articles, keep sending us the material. Without trial information and articles, this newsletter will not publish. We have committed to put out ten issues a year, but it cannot happen without your help. Deadline information is contained within.

Also, remind your trialing friends that their membership may have run out. We have

half as many active members today as we had at the end of last year, and it is surely because people have forgotten to renew.

*continued page 11*

NEBCA News  
213 Split Rock Road  
Boonton, NJ 07005

Editors  
Gene & Lynne Sheninger  
(201)299-9785

NEBCA Officers  
President  
Steve Wetmore (802)765-4466

Vice President  
Becky Peterson (413)624-5562

Secretary/Treasurer  
Lynn Deschambeault  
(207)452-2898

Trials Committee  
Chairperson  
Becky Peterson (413)624-5562  
Bell Rd. Box 395  
Leyden, MA 01337

Nursery Trials Committee  
Chairperson  
Lynnette Milleville  
Sand Hill Rd.  
Portland, CT 06480  
(203)342-4279

NEBCA News is published quarterly as the official publication of the Northeast Border Collie Association. Four issues are published on March 1, June 1, September 1 and December 1. Supplements will be issued during the trialing months. Subscription is by membership to the association. Annual membership dues are \$10.00 per individual or \$15.00 per farm. To join, send your name and address along with your dues to Lynn Deschambeault, RR 1 Box 897B, Bridgton, ME 04009. Make checks payable to NEBCA.

DISPLAY ADVERTISING  
Prices are for camera ready ads. Display Advertising will only appear in the 4 quarterly issues:

single issues 1 year(4 issues)		
Business Cards		
(2"x 3 1/2")	\$15	\$50
1/4 Page	\$35	\$100
1/2 Page	\$50	\$150
Full Page	\$75	\$225

non-members add 20%  
If choosing the yearly price, ad may not change for the entire four issues without an additional fee.

# TRAVELS IN NEW ZEALAND

by Anne Barclay Priest

*This is the second in a series by Anne on her escapades down under. We are continuing with her around that wild and woolly countryside, she started almost two years ago, and we reported in our winter issue. Now join us in reliving Anne's adventures.*

In New Zealand I stayed at two bed and breakfasts on South Island before visiting my friends on North Island. There is a B&B book which lists accommodations by category as well as location and so I picked sheep farms where they were happy to have people help.

The first one was north of Christchurch in a town called Waian. It was most interesting from the economics point of view. The couple (children grown) had recently moved to this farm from a smaller one. It was 1200 acres and had cost \$850,000 New Zealand dollars. That translates to \$578,000 U.S. (at the exchange rate at the time of my visit). They had bought it a year or so earlier when the market was up and the interest rate down (relatively) so that at purchase time they were paying 15% interest on their mortgage. Since then land prices had plummeted to the extent that their farm was now worth \$500,000 N.Z. (\$340,000 U.S.) and their mortgage rate was at 25%. Still, they lived very well. Although we worked hard for 2-1/2 hours in the morning, they were impatient to get on with it, as both of them were competing in a golf tournament in the afternoon. They had about 2000 ewes (a unit in N.Z. that will support a family of 4) and what we did that morning was to vaccinate 1200 of them for toxoplasmosis. I asked the farmer whether he had experienced

much abortion from this disease and he said, "Well, no, but you see, my daughter has just graduated from veterinary school and she got all this vaccine free of charge." At



*Anne in the Press -- WINE or WOOL??*

*Photo by Anne B. Priest*

first the daughter and I worked together. We squashed a lot of sheep into a sorting chute; she started at the top, shooting each sheep in turn while I kept track of which ones she had done and shoved them forward as she moved back. It was hard work but fun. Then the father, who had been shearing, came to help. He was so fast and so strong that I found myself in the way. There were still hundreds of sheep in an adjoining pasture, so I took their dogs (not Border Collies) and went out there. I opened the gate leading to the yard where the chute was and I gave a "go by." Nothing happened so I tried a "way to me." Still nothing happened. I guess they use different words. I tried hand signals, great big hand signals with lots of body English. Still nothing. I guess they use different hand signals too! I then got the dogs to follow me and together we drove the sheep towards the gate. Occasionally the dogs would find something interesting to smell and totally lose

concentration. Once the sheep were in the yard, the dogs were even less cooperative (I think they were sick of me by then), but somehow we managed to keep feeding

sheep into the chute so that the vaccinations continued without interruption. How I longed for my dear Tess! God knows what breed their dogs were, but I know now for sure there's nothing like a Border Collie for that kind of work.

A working chute with a two-way gate is definitely next on my list of things to build for myself. Let's see: 1200 sheep in 2-1/2 hours with one person working (and a good dog). That is 160 sheep per hour, approximately 80 times faster than I do at home. Just think what I could do with the time saved. For instance, it has taken me a year to find time to write this piece. I might have to take up golf. Oh dear, I hate golf.

The second bed and breakfast farm was south of Christchurch on Banks Peninsula, which is an enormous, round, volcanic formation that sticks out in the Pacific. Actually N.Z. is pretty much all volcanic, but it shows more on Banks Peninsula than in

most places. The grass is cropped so short that the bones of the hills show through. At the southern end there is a huge bay shaped like a lobster claw. The land rises precipitously from the water. Akaroa is the largest town on that bay, a charming seaside place. Rod and Kate Shaw live across the bay from Akaroa in a little village called Wainui. (New Zealand place names are mostly Maori and very difficult for this limited brain to remember. Waia sounds like Wainui, right? They all sound the same to me.)

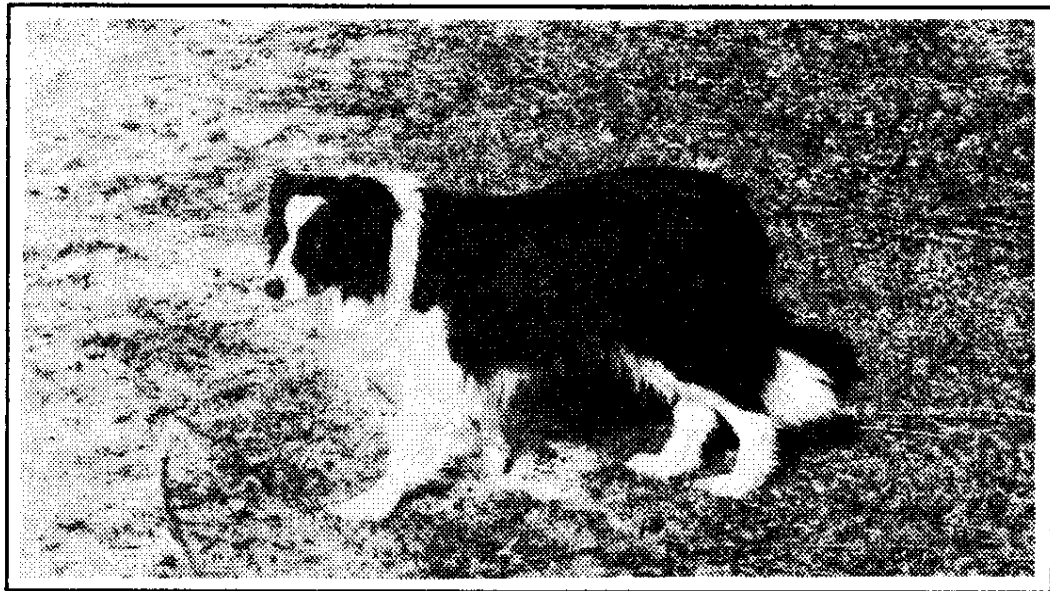
The Shaws run 2000 sheep on 2000 acres. One day Rod took me down the road in his truck to the far end of his farm to gather the sheep. We parked the truck and took off on foot. He provided me with a ski pole to help negotiate my journey down the hills, so steep are they. They looked like mountains to me and, by God, after going up and down two of them on foot, they felt like mountains too! (Too hilly for Bruce's motorcycle here.) Two different types of dogs are used in N.Z. First, the huntaway, a large, very strong, long-legged dog, is sent out to find the sheep under bushes and behind trees. His range is great (1/4 to 1/2 a mile that day) and he barks constantly, which would drive me nuts, but find the sheep he did and caused them to flock together. The huntaway was called in and the header sent out to bring in the sheep. We had already gone up and down one mountain by this time and Rod wanted to check the other side of another mountain with his dogs. Sensing the end of my energy level, he sent me off to look through some bushes and pointed out a meeting place at the top of the second mountain, which was a

*continued page 4*

### Champions continued

when Walt purchased her. Dot has literally been winning ever since. She transferred to Walt quickly enough to win the title of NEBCA High Point Champion in 1983, was Reserve Champion in 1985, Reserve Champion in 1986, and 1987, Fourth Place in 1988, and again Champion in 1989. In the High Point Competition, she has been the most consistent winner in the Northeast Border Collie Association.

Dot also has had an impressive record in the Fall Foliage Championship Trial. She was third in 1983, fifth in 1984, Reserve Champion in 1985 and 1986. In addition, she was Reserve Champion of the Ontario Border Collie Club in 1986 and third place dog in the USBCHA Association Finals in 1986.



*Walt Jagger's Dot, NEBCA High Point Champion for 1989*

Among trials won by Dot and Walt are Quechee, Vermont; Markham, Canada; Glens Falls Open in New York; Bradford, Vermont; and Altamont, New York.

Dot's consistency is unquestionable, having placed in the top ten in over 100 trials with Walt. Walt describes Dot "as never at a loss for power, dependable, friendly, an easy traveler, and most of all stable. She is a great dog, I don't know if I will ever have another one like her."

Dot is a rough coated, medium sized black and white female who presents herself as an almost uninterested bystander at a trial. That is until it is her turn to give the course a try. At that time, she comes to life and as Walt says "she is truly a friend you can depend on." In a world like this, we all could use one of those.



*Walt Jagger's Tweed, NEBCA 1989 Fall Foliage Champion*

Tweed, owned by Walt Jagger of Hop Bottom, Pennsylvania, won the 1989 Fall Foliage Championship. Tweed is a rough-coated black and white male with a half white face and big beautiful eyes. Tweed was imported in 1984 by Ralph Pulfer and purchased by Walt in 1986 from Bob Mattix who had him for two years. Since coming with Walt, Tweed has placed in the top ten in forty trials. He qualified for the Fall Foliage Championship Trial for the first time in 1986 and placed third. Last year proved to be the best of this uphill climb as he walked away with the first place trophy as well as Best Gather and Best Shed over 30+ dogs in the 1989 Championship Trial.

Tweed won Hagersville, Ontario in 1987, Pittsburg Township in Kingston, Ontario in 1988, Portland, Connecticut

in 1989, and Keystone State in Bedminster, Pennsylvania in 1989.

Tweed is a natural outrunning dog and has a way with his sheep unlike most dogs seen today. He is an easy traveler, very eager to please, and adaptable. Walt went on to describe Tweed as a "real gentlemen". A gentleman and a "gentle-dog" he is at eleven years old. *ed's note: At this writing we have been unable to ascertain Walt's age.*

These teams of Tweed and his Walt Jagger, Dot and her Walt, will be back next year. Tweed at eleven, Dot at nine, Walt at ??; you should sit up and take notice when they approach the post because they aren't too old yet!!!

### Travels continued

gentle walk from where we were. But halfway there I heard a lamb bleating way down in a gully at the bottom again. I went down to check and found the lamb too weak to stand, but otherwise a nice 50 lb. lamb. I flung it over my shoulders and started climbing the mountain. It was too steep to go sideways - I kept slipping back like Sisyphus' stone - so I went straight up, using the cleats on my running shoes for traction and the ski pole when I could spare that hand from

holding the lamb. Slowly, slowly, we made it up to the meeting place. I thought to myself, "They don't care as much about lambs here as we do. If Rod says I shouldn't have bothered I'm going to be quite cross." But I needn't have worried. Rod was grateful. He did point out, however, that there was a gate near the gully at the bottom of the mountain where we were going anyway! We had all the ewes and their lambs in the field at last. Another lamb had collapsed too, but they were

close enough to the ewes to stay together. The following day, Rod would walk all the sheep back five miles down the road to his farm for worming. (It was a massive infestation of worms that had caused the lambs' collapse.) The ewes are wormed only once a year (they looked pretty taggy to me), but the lambs are wormed every three weeks for the first year. What I envied the most was their 12-month growing season. No hay, no grain, only grass.

*We will pick up in a later issue on Anne's adventures in New Zealand. How would you like to be working a flock of 20,000 sheep?*

# AMERICAN-INTERNATIONAL BORDER COLLIE

## Certificate of Registration

NAME Imp-120600 OWNED BY Robert Mattix, Rt.1, DATE SEX Female WHELPED Jan. 17, 1980  
& NO. Dot-46826-AIBC Claypool, In. LITTER LITTER  
BRED BY Wm. Hamilton, Brownshall, Gordon, Berwicks, COAT Semi-coat SISTERS BROTHERS  
Scot

SUCCESSIVE OWNERS

Trans. on 6-6-83 to Walter Jagger, Jett.  
Hop Bottom, Pa. 18824

COLOR OR MARKINGS

Black and White

Drift-51969-Breeder-H. Smith, (Glen-15845-Jas. Y. Lothian, Scot  
Dalnabo, Ballinluig, Perth, Scot Soonhope, Berwicks, Scot  
Owner-James Y. Lothian, Soon- Sire Bill-II-17937-J. M. Wilson, "  
hope, Lauder, Berwicks, Scot Dam Bett-25805-Owner-A. Gibson, "  
Mirk-80772-Breeder-Owner-Thos. Sire Jim-26534-Thomas Watson, "  
Watson, Longcroft, Berwicks, Scot Dam Nell-29636-J. F. Bradbury, Eng  
Lassie- Sire Garry-19382-And. Chapman, Scot  
47702-Breeder-A. Livingstone, Longcroft, Berwicks, Scot  
Greenlaw, Berwicks, Scot. Owner June-30402-Al Livingstone, Greenlaw, Berwicks, Scot  
Thomas Watson, Longcroft, Scot  
Lauder, Berwicks, Scot Dam Tip-13416- " " "

Ben-73508-Breeder-Owner-Robt (Cap-31154-John Richardson, "  
Wood, Collielaw, Lauder, Ber- Johnsleugh, Berwicks, Scot  
wicks, Scot Sire Sweep-22666-Robert Wood, "  
Liz-37009-Owner-Robt. Short Dam Lyn-31785-A. B. Bathgate, "  
Collielaw, Berwicks, Scot Sire Sweep-39603-J. Richardson, "  
Jyp-107191-Breeder-Owner-William Roy-49865-John J. Templeton, "  
Hamilton, Bers, Scot Airtnoch, Ayrs, Scot  
Meg-82522-Breeder- Dam Meg-30217-John Templeton, "  
Wm. Wilson, West Sire Drift-34587-Alex Millar, "  
Heads, Ayrs, Scot Jan-68218-William Wilson, "  
Owner-Wm. Hamilton, West Heads, Ayrs, Scot  
Brownshall, Gor- Don, Berwicks, Scot Dam Heather-57419-Wm. Wilson, "  
don, Berwicks, Scot  
\*\*G. B. International Champion  
\*G. B. National Champion

J. Dean Kaster  
Signed-Sec. Treas.

Pedigree  
of

American-International  
Border Collie

Imp-120600  
Dot-46826-AIBC  
REGISTERED NAME & NO.

Female  
SEX

Robert Mattix, Rt.1,  
OWNED BY Claypool, In. 46510

Wm. Hamilton, Brownshall,  
BRED BY Gordon, Berwicks,  
Scot

Jan. 17, 1980  
WHELPED

Registered by  
AMERICAN-INTERNATIONAL  
BORDER COLLIE REGISTRY, INC.  
RUNNELLS, IOWA 50237

Sept. 24, 1982  
Sec. Treas.  
Signature J. Dean Kaster

# AMERICAN-INTERNATIONAL BORDER COLLIE

## Certificate of Registration

NAME Imp. (111704) OWNED BY Robert Mattix, Rt-1, Box-10, DATE SEX Male WHELPED Oct. 10, 1978  
& NO. Tweed 62961-AIBC Claypool, In 46510 LITTER LITTER  
BRED BY P. Cameron, Mount Hoolie, Dunfermline, Fifes, COAT Rough SISTERS BROTHERS  
Scot Walt Jagger, Sheepy Hollow Farm,  
Hop Bottom, Pa 18824 (Tr. 12-23-86) LL, Jett.

SUCCESSIVE OWNERS

COLOR OR MARKINGS

Black and White.

Craig-47703-Breeder- (Mirk-35066-Thomas Watson, Scot  
Al Livingstone, Woodheads, Longcroft, Berwicks, Scot  
Greenlaw, Berwicks, Scot Sire Garry-19382-And. Chapman, Scot  
Owner-Thomas Watson, Long- Dam Tip-13416- " " "  
croft, Berwicks, Scot Sire Bob-12684-John Gilchrist, "  
Dryden) June-30402-Al Livingstone, Woodheads, Berwicks, Scot  
Dave-85521-Breeder-Owner-A.D. \* Spot-24981-John Gilchrist, "  
MacGregor, Dryden Mains, M-Loth, Firth Mains, M-Loth, Scot  
Chris-60920-A.D. MacGregor, Dry. Mains, " M-Loth, Scot  
Dryden Queen-70345-Breeder- Sire Scott-28069-Geo. Wm. Young, "  
Owner-A.D. MacGregor, Dryden Dam Phil-24983-P.M. Hepburn, "  
Mains, M-Loth, Scot

Tweed-65513-Breeder- (Tweed-29403-J.A. Gordon, "  
J.A. Gordon, Warend, Birnie, Warend, Morays, Scot  
Elgin, Morays, Scot Sire Nap-15948-J.A. Gordon, "  
Owner-M. MacLeod, Woodend, Dam Fly-13270-H.G. Carnegie, "  
Portree, Scot Nell-II-22660-J.A. Gordon, "  
June-94848-Breeder-R. MacLeod, Scot / Warend, Morays, Scot  
Owner-P. Cameron Sire Tam-47960-Owner-A. Dobie, "  
Nell-69628-Breed- Jim-61662-Owner-A. Dobie, "  
er-J. Weir, Over Cummtrees, Dumfries, Scot  
Garrel, Locker- Dam Lassie-53061- " " "  
bie, Dumfries, Lady-61963-Owner-J. Weir, "  
Scot. Owner- / Over Garrel, Dumfries, Scot Sire Ben-52395-Owner-J. Weir, "  
R. MacLeod, Balmacar, Ross, Scot Dam Meg-50878-G. Muirhead, "  
\*\*G. B. International Champion  
\*G. B. National Champion

J. Dean Kaster  
Signed-Sec. Treas.

Pedigree  
of

American-International  
Border Collie

Imp. (111704)  
Tweed 62961-AIBC  
REGISTERED NAME & NO.

Male  
SEX

Robert Mattix, Rt-1, Box-10,  
OWNED BY Claypool, In

P. Cameron, Mount Hoolie,  
BRED BY Dunfermline, Fifes,  
Scot

Oct. 10, 1978  
WHELPED

Registered by  
AMERICAN-INTERNATIONAL  
BORDER COLLIE REGISTRY, INC.  
RUNNELLS, IOWA 50237

March 25, 1986  
Sec. Treas.  
Signature J. Dean Kaster

### *Boot continued*

Boot has also shown a strong desire to run to the right on her outrun. If I send her from the left side from any distance away she will cross over to her preferred side. This is not very important at this stage in training when I am still trying to teach her to get past the sheep without disturbing them. But it is important for her to learn to stay on the correct side. So when I send from the left I always work closer to the sheep and run out beside her far enough to prevent her crossing. We also do more left handed outruns than right handed. Since the first outrun is usually the most difficult of each working session (Boot is usually a little wound up and ready to go) we always make that a right handed run so we can start off on a good note.

Once Boot has her sheep gathered and under control she is ready to start working on her stop command. Because Boot has the sheep under control she will pause in her movements. When she pauses I tell

her to lay down (lay down or stop standing are both acceptable to me as long as Boot stops moving). Because the sheep are still, she is willing to comply. I try not to ask her to stop when she feels she needs to move to control the stock. We practice her staying as I move around the sheep and let them drift away. This is very difficult for a young dog but it is good for Boot to learn that she doesn't always have to be on balance and that sometimes she must let the sheep go. With the sheep drifted 75 or 100 yards away I will call Boot to me and send her after the sheep. This encourages her to come quickly as she knows she will then get to work the sheep again. I am always careful to position both Boot and myself looking at the sheep before I send her. Later in her training this looking for the sheep will be a very important indication to her as to where the sheep are and what group of sheep I want her to work. This can prevent a dog running to the exhaust pen for example on the outrun. Also waiting to be sent

for the sheep teaches her self control.

I try always to speak quietly to Boot. She is a very determined pup with a lot of natural ability. She frequently feels she knows better than I what needs to be done. I want her to learn to listen to me, but I also want her to develop her natural ability and self confidence so that she can gather sheep without any instructions from me. We do much walking around the field while she brings me the sheep as well as many short outruns and gathers where she works on her own with no instructions from me. If in gathering, she gets too close to the sheep and causes the flock to break apart, I will step between Boot and the sheep she is working and urge her to look back. She knows she is supposed to bring all of the sheep so she readily goes back for the ewes left behind. I don't worry about which way she runs as long as she gets behind the sheep and brings them to the main group.

The emphasis in this early training is in allowing Boot to learn about sheep and how to control them. She can't do this if she is constantly listening to me or being told what to do. By allowing her to work on her own and only interfering when she makes an error, I encourage her to think about what she is doing and not what I am doing. It also means that when I do speak to her she is more inclined to listen than if I have been yelling at her the whole time we have been working. Now what is needed is several months of this same type of work while Boot matures and learns about sheep. The outruns will become a little longer and I will become gradually more insistent about her staying on the side she is sent from. I will also gradually become firmer in requiring her to stop on command. But the next few months will see these basic lessons continue until Boot tells me she is ready for more.

Next lesson: Flanks and early driving.

## **GRAHAM WEBSTER & SUE**

*by Steve Wetmore*

The Northeast Border Collie Association would like to recognize one of its youngest members. Graham Webster from Bradford, VT is a very enthusiastic Border Collie owner who attends most of the trials with his father, Dave Webster. Graham has a nice young pup named Sue (out of Dave's Cap and Alex McKinven's Nell) who's always at his side, following him faithfully.

This is the finest pair of representatives NEBCA could hope for. At every trial they attend, Graham and Sue always take time to approach all of the spectators to see who

would like to buy one of the NEBCA calendars. And who can resist a handsome young lad and his cute Border Collie pup? Needless to say, Graham has really helped the Association tremendously with the many calendars sold and the funds he and Sue have raised for us. We all owe him a huge thank you.

Hopefully Graham and Sue will become more involved at the trials over the next few years as they both get a little older and learn the craft of handling sheep. Given the teacher they have (Dave is an accomplished trainer and handler), it's hoped they will both enjoy success. Keep your eyes open for a good-looking blond lad and his little black-and-white dog at the Nursery Trials this year. Good luck Graham and Sue and thank you.

## **The Shepherdess Shoppe**

A complete line of custom-made Border Collie Items, including clothing.



CHERYL JAGGER WILLIAMS

RD#1, Box 77A  
HOP BOTTOM, PA  
18824  
(717) 289-4733

## **MEMBERSHIP RENEWAL**

The membership year runs from January 1 to December 31 for each year. Renewals are due on January 1, 1990. The only exception is for new members who have joined after July 1, 1989; they need not renew until January 1, 1991. Use the form at the back of the newsletter to renew, and be sure to send dues and renewal to the Secretary:

Lynn Deschambeault  
Merlynn Kennels  
RR1 Box 897B  
Bridgton, ME 04009

## NEBCA LENDING LIBRARY

NEBCA maintains a library of books and video tapes for the use of our members. We are fortunate to be able to provide a very nice selection. If you need any further information beyond what is covered below, please contact Beverly Lambert.

### NEBCA LIBRARY LENDING RULES

1. Borrower must be a member of NEBCA
2. Books will be on loan for 1 month.
3. Only one book or video may be borrowed at a time.
4. \$3.00 fee will be charged to borrow books. What is not used to pay for the mailing of the books will go into the

## FUTURITY CLARIFICATION

*by Beverly Lambert*

There has been some confusion about entering dogs in the NEBCA Futurity. Any puppy born in the NEBCA region may be entered in the Futurity. A Futurity is an event in which entries are made well in advance of the competition. The NEBCA Futurity requires that entries be made within ten weeks of the birth of the dog. After that a payment is made every six months of the dog's life until the dog is two years old or competes in the Futurity.

Since the NEBCA Futurity just began last year we had to create an artificial beginning which we did with June 1, 1989. All payments before that date were forgiven. The confusion has come over what dogs are eligible for what Futurities.

If your dog was born after October 1, 1987, it is eligible to run in the 1990 Futurity. You will have to make one or two payments into the Futurity depending upon the dog's birth date.

If your dog was born after September 15, 1988, then it is eligible to run in the 1991 Futurity. You will have to make two or three payments into the Futurity depending upon the dog's birth date.

If your dog was born after September 16, 1989 (or there about), it is eligible to run in the 1992 Futurity. You will have to make four payments into the Futurity.

A dog may compete in only one Futurity. It may compete in whatever Futurity its owner elects, but no later than the next Futurity following the dog's 2nd birthday.

Library's book fund so we can buy more books.

5. The return of the borrowed material is the responsibility of the borrower. Any lost or damaged materials will have to be paid for by the borrower. Any material returned late will be assessed a 10 cent a day late fee.

6. Send all requests for books to Beverly Lambert RFD 1 Box 2280 Brooks, Maine 04921, (207)525-3223.

Requests will be filled on a first come first serve basis. We are a very small library so you may occasionally have to wait a while for a popular title. I will keep track of who has asked for what and fill requests as soon as the books become available. You may request more than one title at a time and we will send which ever one is available.

## LIBRARY SELECTIONS

### TRAINING BOOKS

E.B. Carpenter	The Border Collie: Basic training for sheep work
R.G. Hunter	Sheep dog training explained
Tony Iley	Sheep dogs at work
H. Glyn Jones	A way of life: Sheepdog training, handling and trialing
Tim Longton	The sheep dog: It's work and training
Marjorie Quarton	All about the working Border Collie
Pope Robertson	Anybody can do it
Carroll Shaffner	Training a working collie
Mari Taggart	Sheepdog training: An all breed approach
John Templeton	Working sheep dogs: Management and training

### SHEPHERD'S LIFE

G.M. Anderson	Times remembered
John Barrington	Red sky at night
Louis Irigaray	A shepherd watches, a shepherd sings
Michael Mathers	Sheepherders, men alone
Iain Thomson	Isolation shepherd

### ABOUT THE DOGS

Phil Drabble	One man and his dog
Janet Larson	The versatile Border Collie
Luke Pasco	Heather Jean: the working sheep dog
Eddie Straiton	Dog ailments: recognition and treatment

### STORIES ABOUT THE DOGS

Donald McCaig	Nop's Trials
James Herriot	James Herriot's dog stories
James Herriot	Only one woof
Dick King-Smith	Babe the gallant pig

### VIDEO CASSETTES

1988 International Supreme Championship in Great Britain	
1989 International Supreme Championship in Great Britain	
Tony Collins	Training the working Border Collie

If you have a young dog you think might be eligible for the Futurity and would like to know how to enter, or you would like more information, contact: Beverly Lambert, RFD 1 Box 2280, Brooks, Maine 04921 (207)525-3223. This year's Futurity will be run in September or October. The exact date and time will be published in the next Newsletter.

NOTE: Dogs eligible for the Futurity that were born before 9/15/88 must run in this year's Futurity as they will not be eligible next year.

## 1989 NEBCA NURSERY POINTS

We have listed below all points accumulated for dogs active in 1989 up until October 1989. The totals includes points earned in 1987 and 1988. Watch for your dog to be sure that you are qualified for the class you intend to enter.

Handler	Dog	Class	Points
Bain, Gretchen	Lad	PN	2
Bain, Gretchen	Tip	PN	3
Campion, Carol	Shoe	N	1
Campion, Carol	Betsy	PN	5
Campion, Larry	Ky	PN	6
Cassel, Gwen	Dash	R	7
Clark, Jim	Scott	PN	3
Czekalski, Diane	Luke	N	7
Czekalski, Diane	Kim	R	2
Deschambeault, Merrill	Lacey	R	5
Fogt, Bruce	Lock	PN	5
Fogt, Casey	Bess	PN	5
Gregor, Bill	Quill	N	5
Hamilton, Dayle	Beth	R	9
Heidenberg, Paul	Lynn	PN	11
Horting, David	Mac	N	3
Jagger-Williams, Cheryl	PDQ	R	10
Jagger, Walt	Mac	PN	9
Jagger, Walt	Fly	R	12
Jagger, Walt	Queen	R	13
Kindig, Debbie	Ringo	R	5
Kutchma, Pat	Windy	N	1
Larson, Janet	Image	N	5
Larson, Janet	Snip	N	9
Leonard, Denise	Tess	R	4
Marschark, Eve	Coach	N	5
Marschark, Eve	Rin	N	1
Marschark, Eve	Kate	R	2
Marschark, Len	Bess	N	
McIntosh, Allison	Kelso	N	9
Merrill, Gabriel	Zane	N	3
Merrill, Gabriel	Doc	PN	2
Milliken, Amanda	Hazel	PN	1
Morgan, Eunice	Bridget	N	3
Murray, Sylvia	Duke	N	1
Murray, Sylvia	Nell	N	6
Neuendorff, Evelyn	Cyd	N	2
Neuendorff, Evelyn	Lenard	R	6
Overly, Edith	Tweed	R	5
Overly, Edith	Lynn	R	10
Overly, Edith	Bette I	R	3
Pat ??	Jesse	N	4
Peterson, Becky	Jill	PN	1
Priest, Anne	Tess	PN	10
Pulfer, Ralph	Tam	PN	4
Reitbach, Werner	Kip	N	6
Robinson, Bill	Misty	N	7
Roche, John	Ben	N	5
Rosensteel, Barbara	Nan	PN	3
Schafer, Lisa	Mirk	PN	5
Schafer, Lisa	Spook	R	8
Sheninger, Gene	Nap	R	10
Sheninger, Gene	Bonnie	R	7
Sigel, Ken	Sally	N	10
Smart, Bruce	Skye	N	12

Handler	Dog	Class	Points
Smart, Bruce	Skye	PN	4
Smith, Sue	Lass	PN	3
Stahl, Bernie	Rhett	PN	10
Supplee, Eugene	Kate	N	1
Trojanoski, Rick	Gretta	R	2
Walters, Martin	Charlie	N	4
Weigan, Carol	Ebony	N	1
Wetmore, Tom	Iris	N	2
Whittle, Kristin	Jess	R	4
Weikel, John	Fly	N	5
Wilson, Florence	Craig	R	4
Wilson, Tommy	Ben	R	11
Wilson, Tommy	Molly	R	12

This is the official NEBCA tally of points earned by Nursery dogs. In the event of a discrepancy, please contact: Eve Marschark (Nursery Points Coordinator) at: P.O. Box 397, Bedminster, PA 18910 or 215-795-2023. Unless contested, all points will stand as read above.

## HIGH POINTS COMPETITION

The year 1989 was a very competitive one. As you can see below, there is not much space between placings and many ties. Congratulations go to Walt Jagger and Dot, our 1989 High Points Champions, and to Roger Deschambeault and Cap, our Reserve Champions.

Below are the standings for the 1989 Trial Season:

1.	Walt Jagger	Dot	110	Champion
2.	Roger Deschambeault	Cap	98	Reserve Champion
3.	Walt Jagger	Jill	91	
4.	Cheryl Jagger Williams	Tess	81	
5.	Walt Jagger	Tweed	76	Tie
5.	Cheryl Jagger Williams	Kim	76	Tie
7.	Roger Deschambeault	Sue	67	
8.	Mike Canaday	Ben	59	
9.	Beverly Lambert	Jet	56	
10.	Mike Canaday	Kit	54	
11.	Beverly Lambert	Kate	52	
12.	Jim Clark	Kate	51	
13.	Beverly Lambert	Lark	45	
14.	Mike Canaday	Tibby	43	
15.	David Webster	Gill	37	
16.	Steve Wetmore	Jill	31	
17.	Lynnette Milleville	Magic	30	
18.	Lynn Deschambeault	Daisy	28	Tie
18.	Beverly Lambert	Mac	28	Tie
18.	Lynn Deschambeault	Dandy	28	Tie
21.	Jim Clark	Mirk	21	

## DEADLINE INFORMATION

Deadlines for all articles will be thirty days prior to the date of publication. Deadlines for classified ads and display ads will be two weeks prior to the date of publication.

# UPCOMING TRIAL DATES

*Trials that will qualify for NEBCA points have not yet been determined by the Trials Committee. (Note: Nursery trials that do not offer Novice-Novice, Pro-Novice, and Ranch will not be NEBCA qualified). We will identify qualifying trials in the May supplement. The following trials have been submitted for qualification:*

**May 5:** Conn. Sheep Breeders Sheep Dog Trial, Tolland, CT. Open Trial. Contact Don Grant, Woodland Ave., Storrs, CT (203)429-4180 or Dayle Hamilton, 34 Brown Brook Rd., Southbury, CT (203)264-6348.

**May 6:** Cooperlane Farm Nursery Trial, Shelburne, MA. Contact Edgar Gould, Cooperlane Farm Enterprises, Shelburne, MA 01370 (413)625-6496.

**May 13:** Nearfield Farm Nursery Trial, Ctr. Conway, NH. Contact Roger Deschambeault, Nearfield Farm, HRC Box 16, Ctr. Conway, NH 03813 (603)939-2255 or Steve Wetmore, P. O. Box 54, Strafford, VT 05072 (802)765-4466.

**May 26 & 27:** Mass. Sheep & Woolcraft Fair, Cummington, MA. Nursery trial - 5/26; Open Trial - 5/27. Contact Becky Peterson, Bell Rd., Box 395, Leyden, MA 01337 (413)624-5562.

**June 2 & 3:** Willow Bend Sheep Dog Trials, London, Ont. Novice, Pro-Novice, Open. Contact Hilary Watson (519)822-9136.

**June 15:** Sheepy Hollow Nursery Trial, Hop Bottom, PA. Contact Walt Jagger, Box 233, Hop Bottom, PA 18824 (717)289-4663.

**June 16 & 17:** Pennsylvania State Championship, Hop

Bottom, PA. Open Trial. Contact Walt Jagger, Box 233, Hop Bottom, PA 18824 (717)289-4663.

**June 23 & 24:** Keystone State Stockdog Trials, Bedminster, PA. Open and Nursery. Contact Eve Marschark, P. O. Box 397, Bedminster, PA 18910 (215)795-2023.

**July 7 & 8:** Bittersweet Farm Open & Nursery Trial. Open and Nursery Trials both days. Judged by Bruce Fogt. Contact Carol & Larry Campion, 99 Grayville Rd., Amston, CT 06251 (203)537-1386.

**July (Date to Follow):** Sheep Focus Open Trials, Erin Ontario. Contact Amanda Millikin, RR 2, Kingston, Ontario K715H6 (613)546-7900.

**July 28:** Bangor Fair Open Trial, Bangor, ME. Contact Beverly Lambert, RFD 1 Box 2280, Brooks, ME 04921 (207)525-3223.

**July 29:** Eastern Maine State Championship, Brooks ME. Contact Beverly Lambert, RFD 1 Box 2280, Brooks, ME 04921 (207)525-3223.

## EASTERN ONTARIO TRIPLE CROWN

**August 4 & 5:** Ottawa Valley Open and Nursery Trials, Stittsville, Ontario, Canada. Open and Nursery both days. Contact Evelyn Neuendorf, Box 468, Munster, Ontario KOA 3PO (613)838-2315.

**August 8-9:** Waupoos Island Sheep Dog Trials, Ontario. Novice, Pro-Novice and Open both days. Contact Fearnley Davies (613)476-3910 or Pat Buckley (613)396-6600.

**August 10:** Pittsburgh Township Nursery Sheep Dog Trials, Kingston, Ontario. Novice, Pro-Novice at 1:00 in the afternoon. Contact Amanda Millikin, RR 2,

Kingston, Ontario K715H6 (613)546-1451.

**August 11-12:** Pittsburg Township Open Sheep Dog Trials. Contact Amanda Milliken (613)546-1451.

**August 11:** Moose Run Open Trial, Brooks, ME. **CANCELLED** Contact Beverly Lambert, RFD 1 Box 2280, Brooks, ME 04921 (207)525-3223.

**August 12:** Skowhegan Fair Open Trial, Skowhegan, ME. Contact Charles Carpenter, c/o Skowhegan Fair, 61 Water St., Skowhegan, ME (207)474-2947.

**August 18:** Empire State Sheep Dog Trial, Altamont, NY. Open Trial. Contact Mike Canaday, RD 2 Box 365, Meadowdale Rd., Altamont, NY 12009 (518)861-6049.

**August 19:** New York State Championship, Altamont Fair, Altamont, NY. Open Trial. Contact Mike Canaday, RD 2 Box 365, Meadowdale Rd., Altamont, NY 12009 (518)861-6049.

**August 25:** Scottish Festival Open Trial, Quechee, VT. Contact George Madiera, 79 Hanover St. #8, Lebanon, NH 03766 (603)448-5669.

**September 1 & 2:** North East US Sheep Dog Trial, Blue Hill Farm, Blue Hill, ME. Contact Jim Davidson, Round Pond, ME 04564.

**September 3:** Windsor Fair Open Trial, Windsor, ME. Contact Fred Eames, RFD 2 Box 5130, Waterville, ME 04901 (207)872-9604.

**September 1-3:** Rockaway Township Sheep Dog Trials, Rockaway, NJ. Nursery Trials - 9/1 & 9/2; Open Trials all three days. Contact Gene Sheninger, 213 Split Rock Rd., Boonton, NJ 07005 (201)299-9785.

**September 15 & 16:** Fern Hall Sheep Dog Trial, Crystal Lake, PA. Nursery & Open. Contact Bill Robinson, RD 1, Carbondale, PA 18407 (717)222-3676.

**September 29:** New Hampshire State Championship, Ctr. Conway, NH. Open Trial. Contact Roger Deschambeault, HRC 16, Ctr. Conway, NH 03813 (603)939-2255.

**September 30:** Fryeburg Fair, Fryeburg, ME. Open Trial. Contact Wayne Bartlett, P.O. Box 270, Denmark, ME 04022 (207)452-2460.

**The following 1990 trials have not been confirmed:** Additional information will be provided in a subsequent issue.

**Early July:** Vermont State Championship. Dave Webster. (802)222-5629

**Tentative August:** Western NY International Open Sheep Dog Trial, Mumford, NY. Contact Iain Francis (716)652-5445.

**Mid September:** Hagersville Open Sheep Dog Trials, Hagersville, Ontario - Alice Guthrie. (416)768-5587

**The following trials are being planned for late October to qualify for 1991:** Additional information will be provided in a subsequent issue.

**Nutmeg Farm, Portland, Ct.** Contact Lynnette Milleville (203)342-4279.

**Cumberland Open Trial, Carlisle PA.** Contact Nathan Mooney (717)249-5695.

**Bedford Open Trial, Bedford, PA.** Contact Jack Mon-sour (717)623-8243.

## CLASSIFIED

*Classified ads cost \$3.00 per issue or \$10.00 per year (four issues and all supplements - no changes) for 50 words or less. An additional fee of \$.20 per word will be charged for longer ads. Payment MUST accompany ads. Send all submissions to NEBCA NEWS, 213 Split Rock Road, Boonton, NJ 07005. Deadline is two weeks prior to date of publication.*

**THE SHEPHERD'S DOGGE**, quarterly journal of the Border Collie and his ancestors, devoted to sheepdog culture and lore, historic and contemporary, featuring interviews, photographs, art, stories, poems, cartoons, articles, reviews and more. \$12.50/year to the Shepherd's Dogge, Woolgather Farm, 75N Bear Hill Road, Merrimac, MA 01860.

**BORDER CORNER** Border Collie specialty shop. Inventory includes clothing, posters, notecards, a wide selection of books, jewelry, imported figurines and much, much more. For information contact Kathy Kemper, 212 Salem Drive, Everman, Texas 76140, (817)568-2515.

**REGISTERED BORDER COLLIE PUPPIES** from top working/trial dogs (all dogs OFA good). Stud service available. Training services for dogs and handlers. Beverly Lambert, RFD 1 Box 2280, Brooks, Maine 04921 (207)525-3223.

**SHEPHERDESS SHOPPE** Featuring clothing with Border Collie insignias and Border Collie Items; Visors, Hats,

Jackets, Sweaters, Key Chains, Pins, etc. A new line of Wool-rich items available. For information call or write Cheryl Jagger-Williams, RD 1 Box 77A Hop Bottom, PA 18824 (717)289-4733.

**BORDER COLLIE TRAINING SERVICES** both for handler and dogs. For more information call or write Cheryl Jagger-Williams, RD 1 Box 77A, Hop Bottom, PA 18824 (717)289-4733.

**BORDER COLLIE PUPS:** Due April 20 out of Eve Marschark's RIN and Cheryl Jagger Williams' RIP. Contact: Eve Marschark, P.O. Box 397, Bedminster, PA 18910 or (215)795-2023 before 9 p.m.

**BORDER COLLIE PUPS**, 1 black & white female, 3 males - 1 black & white, 2 liver & white. Born 1/4/90. Out of Gene Sheninger's Bonnie (OFA Excellent) and Walt Jagger's Tweed (Champion 1989 NEBCA Fall Foliage Championship Trial). Contact Gene Sheninger (201)299-9785.

**BORDER COLLIE PUPPIES** born 1/12/90; 4 males, 3 black and white, 1 tricolor; out of Becky Peterson's Jill (Becky's Fly x Dryden Craig), sire Becky's Imp. Taff. Jill is a very intense worker; Taff an easy working, level-headed dog. Becky Peterson (413)624-5562.

**LITTER OF PUPS** due March 20 out of Lacey and Jagger's Imp. Vic. All colors (red and blue merles, tris and reds) expected. Will be good

working, obedience or pet prospects. Call or write Lynn Deschambeault, Merlynn Kennels, RR 1 Box 897B, Bridgton, ME 04009 1-207-452-2898 (leave message or call after 10 PM).

**TRAINED BORDER COLLIES:** Duke, 5 yr. old male, consistent trial winner and excellent farm dog; Bonnie, 3 yr. old female, trial caliber, open winner, good brood bitch. Also pups out of above cross - a proven breeding. Also training services emphasizing practical aspects, clinics and demonstrations. Jack Mon-sour, RD 2, Box 309-A, Bed-

ford, PA 15522 (814)623-8243 evenings.

**IMPORTED 1 YR. OLD FEMALE** out of Bobby Dalziel's Midge and Wist (1989 Supreme International Champion). She is a quiet worker. Contact: Eve Marschark (215)795-2023 before 9 p.m.

**BORDER COLLIE LITTER**, due 5/1/90; out of Lucy (Billingham's Garry daughter; Int. Craig g'daughter) by O'-Brae Coach (Jagger's Vic x O'-Brae Penny). Contact Gwen Cassel (315)855-4410

*Paid Advertisement*

### NEW GROUP REVIVES OLD TRIAL

**THE SCIENCE DIET BLUEGRASS OPEN TRIAL**  
May 26 & 27, 1990

*by Casey Fogt*

The Heartland Border Collie Association came into existence December 31, 1988 with a gathering of Border Collie fanciers at the home of Bruce and Casey Fogt. The Association has evolved to include members in Ohio, Indiana, Michigan and Kentucky. The main focus has been to provide a variety of training situations, opportunities for learning and good fellowship. To that end, we've sponsored many fun days, a Seminar and a three-trial Nursery season. The membership is very enthusiastic and ranges from beginners to seasoned trialers.

Our biggest undertaking is the Science Diet Bluegrass Open Sheep Dog Trial, a \$4000 plus trial to be held at the Kentucky Horse Park near Lexington, Kentucky on May 26 and 27. We are trying to revive the strong interest and support that had been given the Bluegrass National Sheepdog Trial held in the past at the Wal-

nut Hall Farm. The trial will be held on the beautiful Steeplechase grounds with the actual trial course on the 44 acre infield. Jim Akers of Wiglesworth Farms, Paris Kentucky will be furnishing 250 lambs to provide all handlers with fresh sheep. Alan MacDonald, from Scotland, will be judging.

A purse of over \$4000 will be divided among the Top Ten Handlers. The twenty top qualifiers will be competing for these ten prestigious positions. Along with the sizable purse, trophies will be given for special awards. The Steeplechase Barn will house the Saturday evening dinner and dance. The Horse Park is a simply fantastic setting for this event, with camping available on the grounds (no hookups, but bathhouse facilities available) or at the Horse Park Campgrounds very close by (complete with swimming pool and tennis courts). Plan now to support this Memorial Weekend event. For more information, contact: Debbie Kindig, 17512 Fulton Road, Marshallville, Ohio 44645. (216)855-4385.

### CORRECTION

In our last issue we reported that the Ontario Border Collie Club had requested that their TWO-CLASS Nursery Trials be qualified by NEBCA. We did not report on the Trial Committee's decision. The Committee has decided that all Nursery Trials qualified by NEBCA MUST have a full THREE classes; i.e. Novice-Novice, Pro-Novice and Ranch. No Nursery Trial offering less than these three classes will be sanctioned by NEBCA.

It is time to renew your membership. Use the membership form below. Be sure to send it to Lynn Deschambeault. **DO NOT SEND IT TO YOUR NEBCA NEWS EDITORS.** Those who joined after July 1, 1989 need not renew until January 1, 1991.

## Northeast Border Collie Association Membership Application

NAME \_\_\_\_\_

DATE \_\_\_\_\_

ADDRESS \_\_\_\_\_

CITY/STATE \_\_\_\_\_

ZIP CODE \_\_\_\_\_

PHONE \_\_\_\_\_

Mail to:

Lynn Deschambeault  
RR 1 Box 897B  
Bridgton, ME 04009

Annual Membership -- Individual \$10.00 \_\_\_\_\_

Family or Farm --\$15.00 \_\_\_\_\_

**TOTAL** \_\_\_\_\_

*Make checks payable to NEBCA*

## CLINIC AND PUPPY DAY DATES

*Included below are projected dates for training or trialing clinics and Puppy Days across the NEBCA Area. This listing is provided as a service to NEBCA members, but in no way represents an endorsement of the trainers or sponsors of these events by NEBCA NEWS or the North East Border Collie Association.*

**March 31 & April 1:** Monsour Sheep Farm Clinic, Bedford, PA. Contact Jack Monsour, RD 2, Box 309-A, Bedford, PA 15522 (814)623-8243.

**April 28 & 29:** Sheepy Hollow Spring Clinic, Hop Bottom, PA. Contact Cheryl Jagger Williams, RD 1, Box 77A, Hop Bottom, PA 18824 (717)289-4733 or Walt Jagger, Sheepy Hollow Farm, Box 233, Hop Bottom, PA 18824 (717)289-4663.

**May 12:** Nearfield Farm Clinic, Ctr. Conway, NH. Contact Roger Deschambeault, Nearfield Farm, HRC Box 16, Ctr. Conway, NH 03813 (603)939-2255 or Steve Wetmore, P. O. Box 54, Strafford, VT 05072 (802)765-4466.

**May 19:** Spring Valley Farm Puppy Day, Strafford, VT. Contact Steve Wetmore, P. O. Box 54, Strafford, VT 05072 (802)765-4466.

**June 2 & 3:** Ivy Rose Farm Clinic, Bedminster, PA. Contact Eve Marschark, P. O. Box 397, Bedminster, PA 18910 (215)795-2023.

**June 10:** Moose Run Clinic, Brooks, ME. Contact Beverly Lambert, RFD 1 Box 2280, Brooks, ME 04921 (207)525-3223.

**July 6 :** Clinic, conducted by Bruce Fogt. Contact Carol & Larry Campion, 99 Grayville Rd., Amston, CT 06251 (203)537-1386.

**July 14:** Misty Lane Puppy Day, Brownfield ME. Contact Gabrielle Merrill, RFD 1 Box 20, Brownfield, ME (207)935-2520

**July 15:** Handlers Clinic for Nursery People/Dogs and Nursery Trials. Nearfield Farm, HRC Box 16, Ctr. Conway, NH 03813. Contact Lynn Deschambeault (207)452-2989

**August 10:** Eye Clinic with Dr. Melanie Williams, D.V.M., Certified Canine Ophthalmologist, Kingston, Ont. For appointments contact Amanda Milliken (613)546-1451.

*Editors continued*

Remember to send in your training questions and your veterinary concerns. Beverly Lambert is willing to answer any questions you may have on training, and Dave Webster can answer many of your veterinary questions. You can send any questions directly to them or to us, and we will forward them on for inclusion in the newsletter.

As a reminder, we expect to publish on the first of every month except for November, January and April. Call us or write to let us know what you want from your newsletter. It cannot happen without you and it is solely for your information and entertainment. Let us know how you want us to proceed.

Gene & Lynne Sheninger

# BREEDERS DIRECTORY

*This listing of breeders of Border Collies is for informational purposes and in no way represents an endorsement of these breeders by the Northeast Border Collie Association*

Edward Bell  
Bell's Border Collies  
RR 2  
Canfield, Ontario N0A 1C0  
(416)774-3283

Stephanie Calder  
Singing Falls Farm  
RFD #4  
Skowhegan, ME 04976  
(207)474-2852

Pat and Mike Canaday  
RD 2 Box 365  
Meadowdale Road  
Altamont, NY 12009  
(518)861-6049

Gwen Cassel  
O'Brae Border Collies  
RD 1, Box 492  
West Winfield, NY 13491  
(315)855-4410

Border Corner  
Kathy Kemper  
212 Salem Drive  
Everman, TX 76140  
(817)568-2515

Gary & Diane Czekalski  
Second Wind Kennels  
RD #1 Box 63  
Hop Bottom, PA 18824  
(717)289-4823

Lynn Deschambeault  
Merlynn Kennel  
RR 1, Box 897B  
Bridgton, ME 04009  
(207)452-2898

Roger Deschambeault  
Nearfield Farm  
HCR Box 16  
Ctr. Conway, NH 03813  
(603)939-2255

Edgar Gould  
Cooperlane Farm Ent  
Shelburne Falls, MA 01370  
(413)625-6496

Sheldon & Donna Hamblin  
P.O. Box 1017  
West Falmouth, MA 02574  
(508)457-0558

Dayle & Joan Hamilton  
34 Brown Brook Rd.  
Southbury, CT 06488  
(203)264-6348

Walt Jagger  
Sheepy Hollow Farm  
Box 233  
Hop Bottom, PA 18824  
(717)289-4663

Beverly Lambert  
Douglas McDonough  
Dickey Hill Road RFD #1  
Brooks, ME 04921  
(207)525-3223

Janet E. Larson  
Caora Con Kennels  
6 Pinecrest Lane  
Durham, NH 03824  
(603)868-5313

Richard & Barbara Leverett  
Long View Farm  
Box 308 Burrell Rd.  
St. Johnsville, NY 13452  
(518)568-2833

Betty Levin  
Old Winter Street  
Lincoln, MA 01773  
(617)259-8799

Eve Marschark  
Ivyrose Farm  
Farm School Rd.  
Bedminster, PA 18910  
(215)795-2023

Alex McKinven  
Cessnock Farm  
RR 1  
North Hatley, Quebec  
J0B 2C0  
Canada  
(819)842-2975

Gabrielle Merrill  
Misty Lane Border Collies  
RFD 1 Box 20  
Brownfield, ME 04010  
(207)935-2520

Lynnette & Tim Milleville  
Nutmeg Farm  
Sand Hill Rd.  
Portland, CT 06480  
(203)342-4279

Sylvia C. Murray  
Fleece and Feathers Farm  
294B Cossaduck Hill Rd.  
North Stonington, CT 06359  
(203)889-7777

Lou Parcell  
Sunset Garden Border Collies  
61 S. Morningside Drive  
Westport, CT 06880  
(203)227-3545

Becky & Hoop Peterson  
Orchard Valley Farm  
Bell Rd. Box 395  
Leyden, MA 01337  
(413)624-5562

Anne P. Priest  
Blue Island Farms  
191 Old Mountain Rd.  
Port Jervis, NY 12771  
(914)856-3209

Gene & Lynne Sheninger  
Wayside Farm  
213 Split Rock Rd.  
Boonton, NJ 07005  
(201)299-9785

Crawford Taisey  
207 Main Street  
Freeport, ME 04032  
(207)865-3852

Stephen Wetmore  
Spring Valley Farm  
PO Box 54  
Strafford, VT 05072  
(802)765-4466

Kristen P. Whittle  
Little Brook Farm  
P. O. Box 185  
Sunderland, MA 01375  
(413)665-3802

Dick & Cheryl Jagger-  
Williams  
C.J.'s Acres  
RD 1 Box 77A  
Hop Bottom, PA 18824  
(717)289-4733

© 1990 NEBCA News, Boonton, NJ 07005

**NEBCA NEWS**  
213 Split Rock Road  
Boonton, NJ 07005

**BULK RATE**  
U.S. Postage Paid  
PERMIT No. 202  
Boonton, NJ 07005

Stephen Wetmore  
Spring Valley Farm  
PO Box 54  
Strafford, VT 05072